

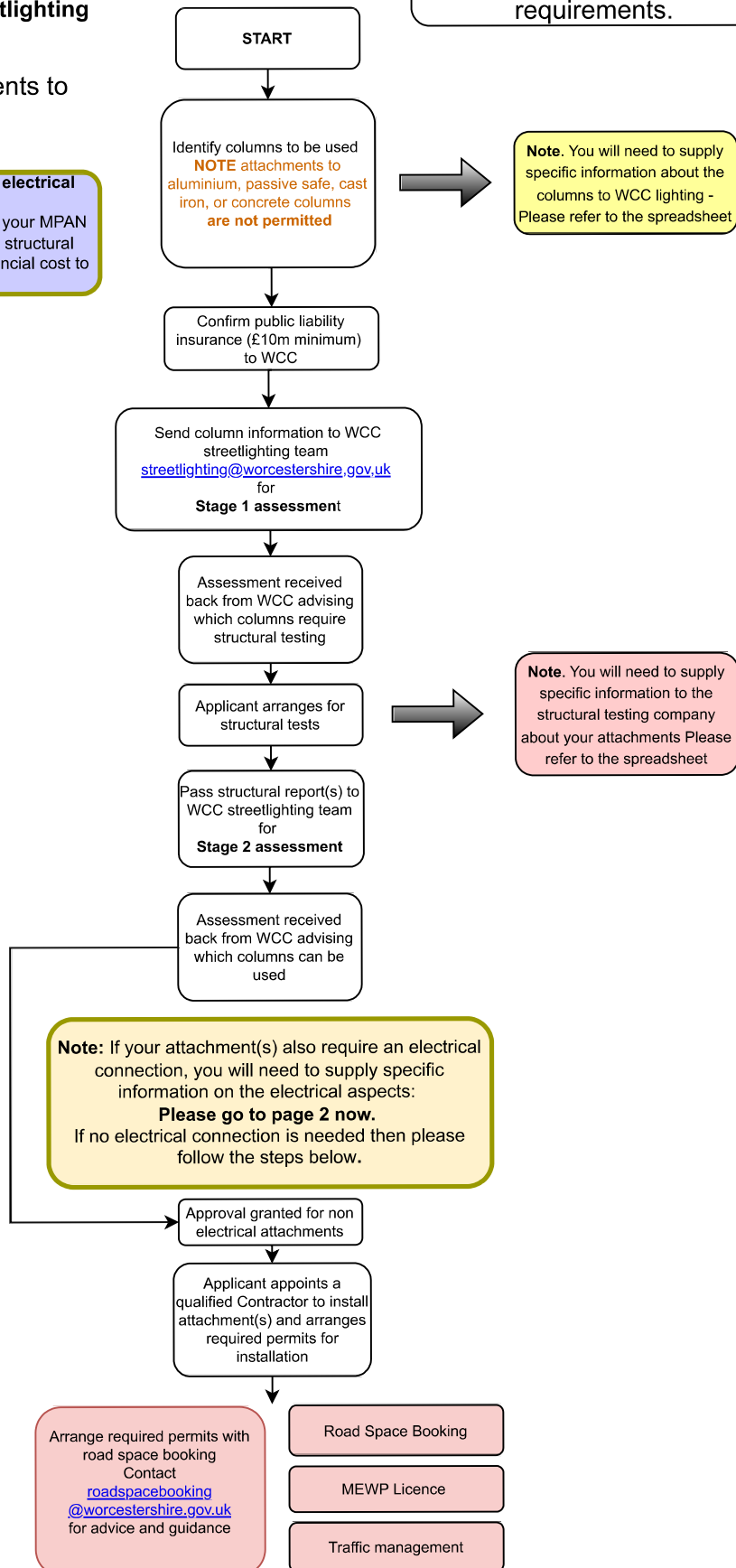
## Highway Operations: Streetlighting

Guidance on  
applying for attachments to  
streetlights

### If your attachment requires an electrical connection

You are strongly advised to obtain your MPAN certification **before** you instruct a structural report as the report will have a financial cost to you.

## Page 1: Column identification & structural testing requirements.



## Highway Operations: Streetlighting

Guidance on  
applying for attachments to  
streetlights

### Page 2: Electrical compliance requirements.

#### Note 1.

You are strongly advised to obtain your MPAN certification before you instruct a structural report as the report will have a financial cost to you.

#### Note 2:

All electrical connections must utilise a commando socket and be double pole isolated at the base of the column.

