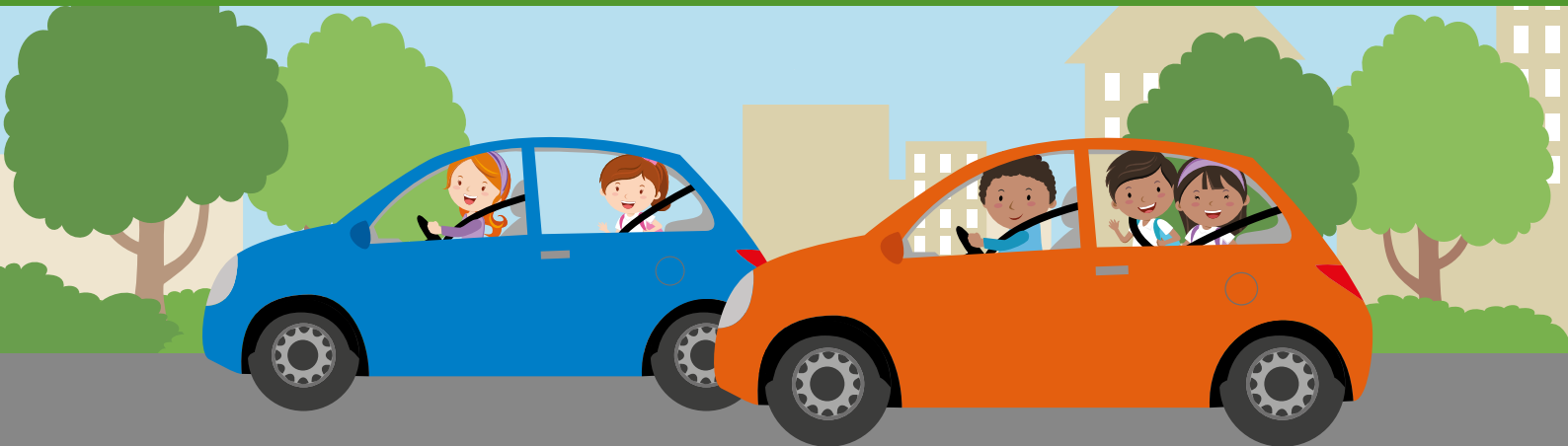


What is a Direct Travel Payment?



A Direct Travel Payment (DTP) is a payment that is made to a parent/carer to enable them to arrange their own child's home to school travel arrangements. A DTP is available to families of children who are eligible for travel assistance from the council. This includes children with special educational needs (SEN) who have been assessed as eligible to receive home to school travel assistance and children who attend their nearest named school and live over the statutory distance from the school.

www.worcestershire.gov.uk/send-local-offer

How much DTP can I expect to receive?

The amount of money that you would receive would be based on the distance between your house and your child's school. Each DTP would be tailored to the specific need of each family.

What are the benefits of DTP?

Currently, if your child is entitled to travel assistance, the Local Authority will organise travel directly which may be in the form of public transport, coach, minibus or taxi. The Local Authority is required to use the available travel network so the pick up/drop off points and times will be fixed and the transport is often shared with other students using the Transport and Passenger Assistance Service.

Using a DTP gives:

- Flexibility for you to choose the most appropriate arrangements for your child to get to and from school to fit in with your own personal circumstances
- More freedom to look at other ways of transporting your child
- An alternative to the traditional services that the council can provide
- Choice and control over how funding is used to get your child to and from school on time
- The opportunity to explore options to share with other parents and potentially increase how much you can do with your DTP
- Flexibility on where your child is picked up from and variation with times i.e. if you want them to attend an after school club or if they are to go to a grandparents/carers after school
- Enables a child to attend the dentist/doctors and still get their transport afterward to get into school, or to leave school in order to attend an appointment.

Who can receive DTP?

Anyone who is assessed and is eligible for travel assistance under the Local Authorities home to school Transport Policy will be considered.

How can my DTP be used?

You would be free to use your DTP however you choose as long as it is used to get your child to and from school on the correct days at the correct times.

You could use your DTP in the following ways:

- You or someone in your family could drive your child to and from school
- Purchase a travel pass for yourself or a trusted adult, and your child, to accompany your child on public transport
- Pay for an escort to walk to school or arrange to do this yourself
- Car share with other parents where their child is going to the same school as your child
- Arrange walking buses with other parents or joint taxi bookings
- Pay for a bus pass on a vehicle that the school organises to take children to and from their school
- Pay for childcare for your other child/ren in order for you to take your child to and from school.



Frequently asked questions

Will this impact on my other benefits?

There will be no impact on any other benefits that you might receive. You will also not have to pay tax on the payments as this is a payment for the child for their transport, not a payment to the parent. It is to be used to enable your child to get to and from school every day and should not be used for any other purpose.

What if I have more than one child who is eligible for transport?

If you have more than one child going to the same school then you will receive 25% extra funding for the second child. If you have more than one child going to different schools then each case will need to be looked at on an individual basis.

If I applied for DTP could I carry on using the vehicle that my child is currently travelling on?

No. By applying for DTP you will become responsible for making your own arrangements for transporting your child to and from school. You could, if you wished, use your DTP to make your own personal arrangements with the taxi contractor but your child would not be able to travel on the same vehicle as one that has been set up by the local authority.

What if I agree to DTP and then find it isn't working?

DTP's are voluntary. You can stop your DTP if your circumstances change substantially but we would need sufficient notice to arrange alternative forms of travel assistance for your child. We are here to offer help with advice on how to use your DTP should you want it and your DTP can be adjusted if needs or circumstances change.

Will I need to show the council how I am spending DTP and keep receipts?

No. We want to leave the flexibility and control with you. We will monitor attendance and pick up any potential issues through the schools recording of this. The school will be checking that your child is arriving and leaving school at the correct times and they will inform us of any issues.

What if my child is ill?

Attendance is an important part of DTP. Your child's attendance needs to stay at 80% or above in order for you to claim your full DTP entitlement. Any days that your child is absent over and above that will be deducted from the following months DTP payment.

When will I receive my DTP?

You will receive your DTP on a monthly basis. It will be paid directly into your bank account and you will need to provide us with your bank details in order for us to be able to do this. Payments are made at the end of each month ready for the following month.

My child is a boarder, can I still claim DTP?

Your child will be assessed in the same way as all other children and you can claim DTP on the amount of journeys that the Local Authority has agreed to pay in line with their Transport Policy.



Parental Feedback

Lily – Chadsgrove School

I think the DTP works very well for us. It means I can still take my child to and from school, which is something I enjoy.

It also stops me from worrying about the long day for Lily. It means we aren't waiting around for the transport to arrive, or having to worry about contacting transport if Lily is unwell. It also means I can have time to speak with the school about Lily at the beginning and end of the day, which puts my mind at rest. I'm a very wary mom so I'd be extremely uncomfortable with Lily travelling such a long distance with people she doesn't know and who may not be equipped with her medical needs. We have had no issues with DTP so overall I think this is a brilliant thing as it is so much more flexible.

Vale of Evesham School

We chose to take DTP, rather than transport, as it gives us the flexibility we need getting two young children to schools in different towns with the same start time. DTP means that our petrol bills are covered, leaving us free to pay breakfast club fees for our other child.

A happy parent!

Peter – Rigby Hall School

It works really well for me and Peter and gives us quality time to catch up on his school day and makes Peter feel more at ease and a better start to his school day knowing I can take and pick him up.

Matchborough Nursery Plus

I find DTP works for me and my daughter as she gets very anxious and upset with people she doesn't know. By using DTP she gets to nursery happy and stress free.

General Information

Casework officers will need to complete a Travel Assistance form for all students under the age of 16, for those who attend a special school, a Mainstream Autism Base (MAB) or a Language Unit (LU). When the application has been assessed, you will be informed as to whether your child is eligible for travel assistance. If you are, it is at this stage that all parents will be offered a DTP.

Your DTP will be reviewed on a termly basis. If you do not advise us of a change in circumstances or details then your DTP could be withdrawn. During the review, your child's level of attendance will be looked at to ensure that the level of attendance is satisfactory for you to continue to receive the DTP.

If you decide to go with a DTP, it might be worth contacting your child's school or our team, and they might be able to put you in touch with other parents who have made the same decision for you to discuss with them any ideas of car sharing, taxi sharing or assisting the children getting to school on public transport.

DTP's are calculated using a mapping system. The mileage is from school x 4 (or 2) journey's per day x 45p per mile. We use a mapping system that calculates the shortest distance from your house to the pupils place of education. You will be offered a yearly amount which then gives you a daily amount. The daily amount is used to calculate your monthly payment. The academic year is normally 190 days per year, but where your child may only travel, for example 12 times per year, the amount will be calculated accordingly.



List of details and contacts

If you would like more information about DTPs, please contact:

Linda Quainton

(Personalised Travel Co-ordinator)

lquainton@worcestershires.gov.uk

01905 844038

DTPAssistance@worcestershires.gov.uk

Leisha Rymsza

(Personalised Travel Co-Ordinator)

Lrymsza@worcestershires.gov.uk

01905 843495



www.worcestershires.gov.uk/send-local-offer