



# **Domestic Abuse Needs Assessment**

## **Initial Findings & Recommendations**





# Domestic Abuse Introduction

---

**Aims:** This domestic abuse needs assessment has been conducted in Worcestershire to:

- Provide a comprehensive report on the prevalence of Domestic Abuse.
- Establish a baseline for current Domestic Abuse services.
- Look at the unmet health needs and gaps in current service provision.
- Make recommendations on how to meet the current and future needs of the Worcestershire population.

# OBJECTIVES

---

**The objectives of the needs assessment have been identified as follows:**

- Set up a working group to oversee the needs assessment and agree the project scope, approach, and governance in advance of work being undertaken.
- Conduct a scope of previous needs assessments and current research on Domestic Abuse.
- Produce a current local and National domestic abuse prevalence picture.
- Undertake a review of the demography and Worcestershire and population at risk.
- Compare current services in Worcestershire to either known 'optimum' service recommendations/targets, or to other local authorities.
- Undertake a review of the domestic abuse service system in Worcestershire.
- Engage with service users and providers in Worcestershire to inform suitability/effectiveness of current service provision, and aid discussions about how existing structure could align to future models of service delivery.



# What is Domestic Abuse?

**DEFINITION:** “Domestic abuse related offences and incidents recorded by the police in those aged 16 or over.

Domestic abuse related offences and incidents are defined as threatening behavior, violence or abuse (psychological, physical, sexual, financial or emotional) between adults, aged 16 and over, who are or have been intimate partners or family members, regardless of gender or sexuality. Offences have been recorded as a crime, whereas the number of incidents refers to those that were not recorded as a crime and the two categories are mutually exclusive.”

[Public health profiles - OHID \(phe.org.uk\)](https://publichealthprofiles.org.uk/)



# Statutory duty 2021

Definition of domestic abuse which recognised children as victims and economic abuse as a form of domestic abuse

Duty on local authorities to provide support to victims and survivors and their children within safe accommodation

Relevant local authorities must establish a 'Domestic Abuse Partnership Board

Complete a needs analysis and publish a strategy regarding provision of the support into safe accommodation detailed in the duty

Ensure that the strategy and needs assessment are developed in partnership with people with lived experience of domestic abuse



[Home](#) | 
 [Election 2024](#) | 
 [InDepth](#) | 
 [Israel-Gaza war](#) | 
 [Cost of Living](#) | 
 [War in Ukraine](#) | 
 [Climate](#) | 
 [UK](#) | 
 [World](#) | 
 [Business](#)

[UK](#) | 
 [England](#) | 
 [N. Ireland](#) | 
 [Scotland](#) | 
 [Alba](#) | 
 [Wales](#) | 
 [Cymru](#) | 
 [Isle of Man](#) | 
 [Guernsey](#) | 
 [Jersey](#) | 
 [Local News](#)

## Domestic violence killings reach five-year high

© 13 September 2019



**BBC**  For you  Home  News  Sport  Weather  iPlayer 

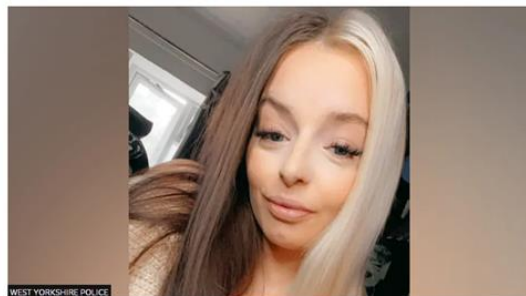
## NEWS

[Home](#)
[Election 2024](#)
[InDepth](#)
[Israel-Gaza war](#)
[Cost of Living](#)
[War in Ukraine](#)
[Climate](#)
[UK](#)
[World](#)
[Business](#)

[UK](#)
[England](#)
[N. Ireland](#)
[Scotland](#)
[Alba](#)
[Wales](#)
[Cymru](#)
[Isle of Man](#)
[Guernsey](#)
[Jersey](#)
[Local News](#)

## Murder victim told police she feared ex-partner would kill her

① 29 February



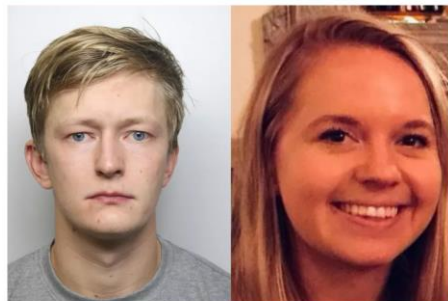
## Domestic abuse killers to face tougher sentences after campaign by Leeds mum over daughter's murder

## Domestic abuse killers could face tougher sentences

By Flora Thompson, PA Home Affairs Correspondent & Megan Banner News Reporter

Bookmark 

▶ Enter your **postcode** for **local news** and **info**
 Enter your postcode
 
 In  Your Area



Joe Atkinson murdered Poppy Devey Waterhouse in December 2018

[BOOK NOW](#)

**BBC**  For you  Home  News  Sport  Weather  iPlayer  Sound

## NEWS

[Home](#) | [Election 2024](#) | [InDepth](#) | [Israel-Gaza war](#) | [Cost of Living](#) | [War in Ukraine](#) | [Climate](#) | [UK](#) | [World](#) | [Business](#)

[England](#) | [Local News](#) | [London](#)

## Domestic abuse killings in London treble

© 6 February 2019



Sophie Cavanagh was murdered by her estranged husband Martin Cavanagh in Bromley on 20 May


**Mirror**



Ellie Gould was stabbed to death when she was just 17 years old (Image: Gould Family /SWNS.COM)

NEWS POLITICS FOOTBALL CELEBS TV SHOPPING ROYALS

## EXCLUSIVE: Mum of murdered Ellie, 17, warns of 'subtle' domestic abuse signs in teen relationships

## Seven in 10 women killed by partner told someone they were suffering domestic abuse, chilling report finds

'She married her killer and 20 years later he took her life,' say relatives of woman killed by husband

**Maya Oppenheim** Women's Correspondent • Wednesday 25 November 2020 07:30 GMT

-  Comments



Photos of women killed by men in 2018-India (Femicide Census / NIP) [View image](#)

Online survey started: 04/10/23 – Ended: 06/02/24, with a total of 47 respondents.

Other areas of work included:

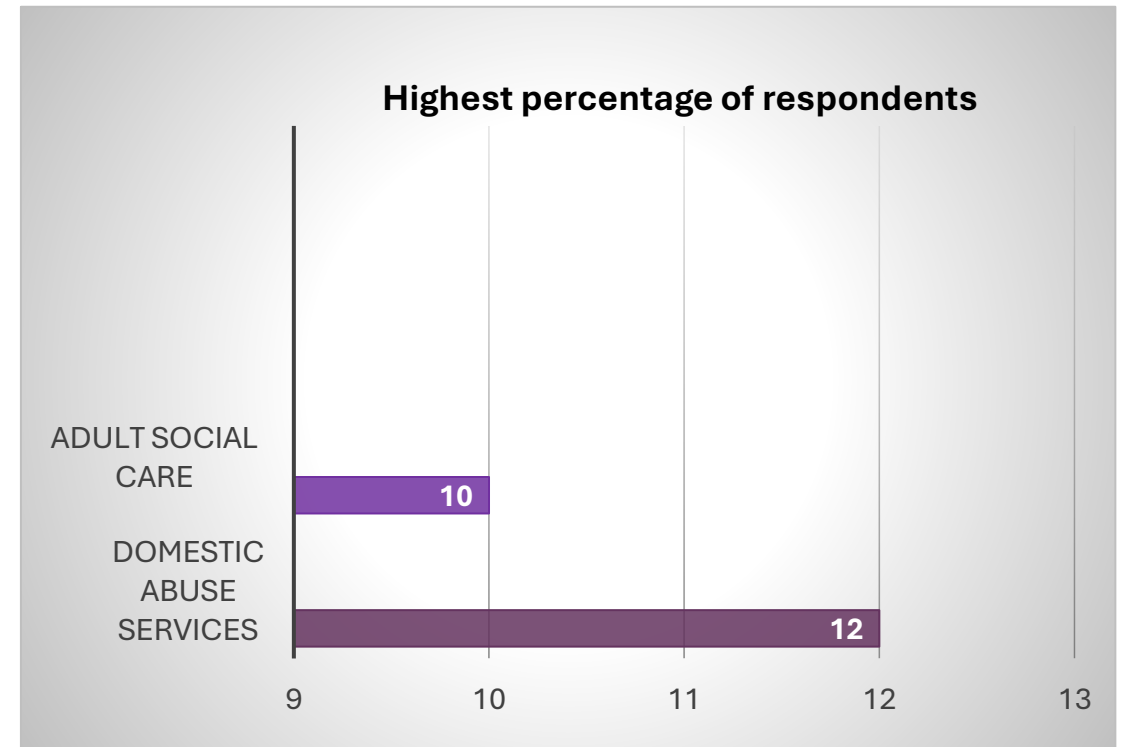
- Safeguarding Adults Board
- Crime Prevention
- Local Authority
- Community Safety Teams.

Within the criminal justice area 100% were from the police force and education was represented by further / higher education.

Within health services:

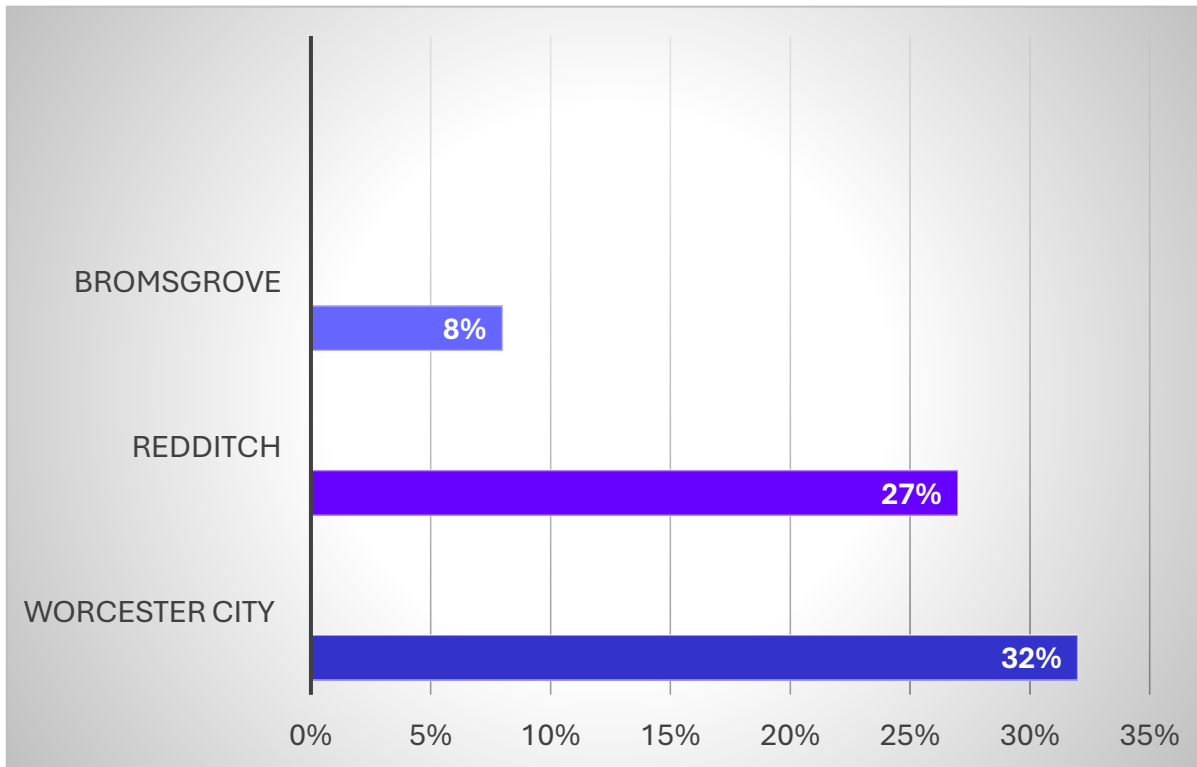
- 60% were from hospitals
- 40% from mental health services
- 20% from GP practices
- Remainder working in integrated community services and CAMHS.

# Stakeholder Surveys



# Service user surveys

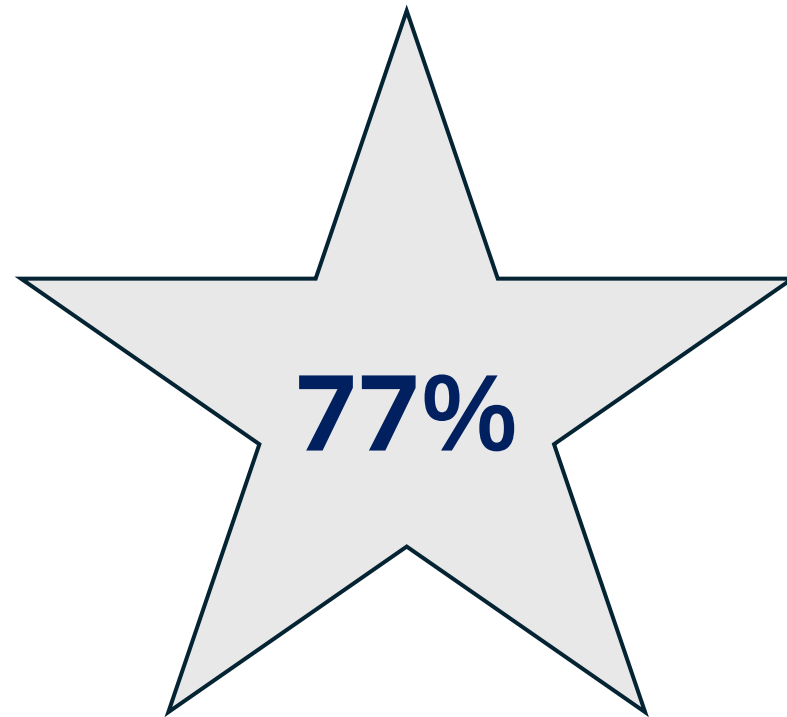
Online survey started: 04/10/23 Ended: 6/02/24, 93 respondents.



- A large majority (92%) were female, with overall 81% being from a White British.
- 86% were straight/heterosexual with 24% being disabled



- Positive Feedback



Said they were happy with the support they have received!



# + . Focus groups & positive feedback

Vital service,  
expectational  
deliverance  
under difficult  
circumstances.

They  
listened to  
me and  
understood

Incredible

Removal of  
support  
could be  
dangerous

Fantastic  
service, felt  
understood,  
helped me and  
my kids.

Increased  
my  
confidence

Were there  
for me from  
day one

Would  
recommend

They  
saved  
my life

Elation that  
somebody  
could  
understand

Removal of  
support  
could be  
dangerous

Excellent  
quality of  
care

Extremely  
knowledge  
-able staff

WOULDN'T  
BE HERE  
WITHOUT  
THEM

Wonderful  
and  
supportive

Invaluable  
service. Me and  
my daughter  
wouldn't be  
here without  
their help

Very good  
service and  
support

They  
provide so  
much more  
than just  
refuge

They were  
always  
there

Excellent  
communi-  
cation

+

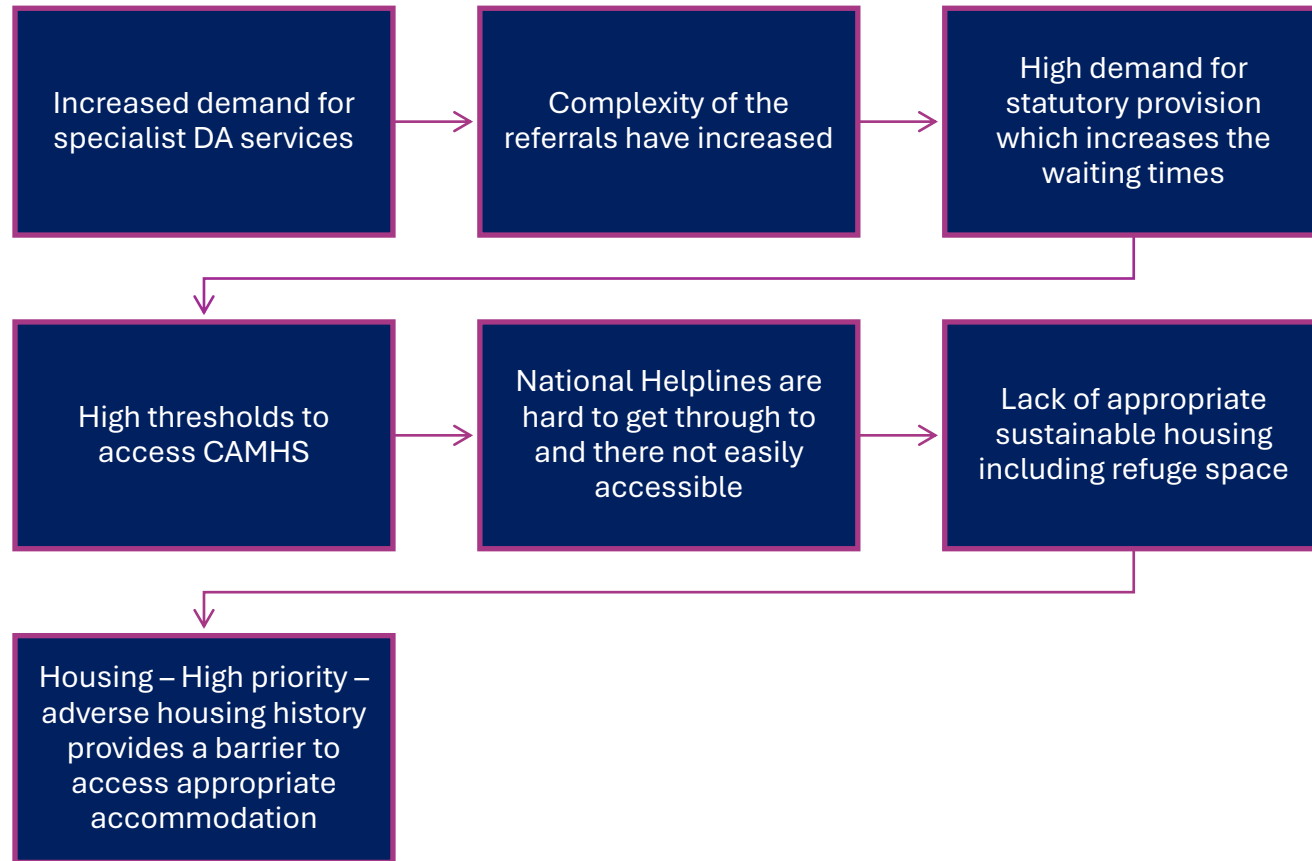
○

**There are 5 key themes of Domestic Abuse. These are:**



# Access to services

---



## Awareness



➤ Many victims are not aware that they are in an abusive relationship and are not aware of the support available.

➤ For professionals Domestic abuse is not easily identifiable. We need to be more professionally curious.

➤ Male victims are not aware of how they can access specialist support.

➤ Educational settings – more robust and consistent healthy relationships programme needs to be delivered.

➤ Training that covers all areas of DA (psychological, physical, sexual, financial or emotional) .

➤ Greater flexibility around the delivery of training.



## Communication



- Fear of the perpetrator - Many survivors report that they are fearful of the perpetrator finding out they are planning to leave or seek support, and one of the most dangerous times for a woman is after they have left the abusive relationship.
- Fear of judgement from others – There can also be a feeling of shame that the survivor has ‘allowed’ the abuse to continue. There is a perception that the person who is being abused should just leave, however as can be seen this is not always easy to do.
- Having to re-tell their stories, re traumatises the victim.

# Inequalities

---

Consistent service provision offer is not available and where you live dictates the level of support available.



More work needs to be done to raise awareness of DA across all communities.



Better access to Mental Health support for both CYP'S and adults.



Increased access to safe accommodation.

## Inequalities



## Funding and Resources



Demand for services has increased significantly.

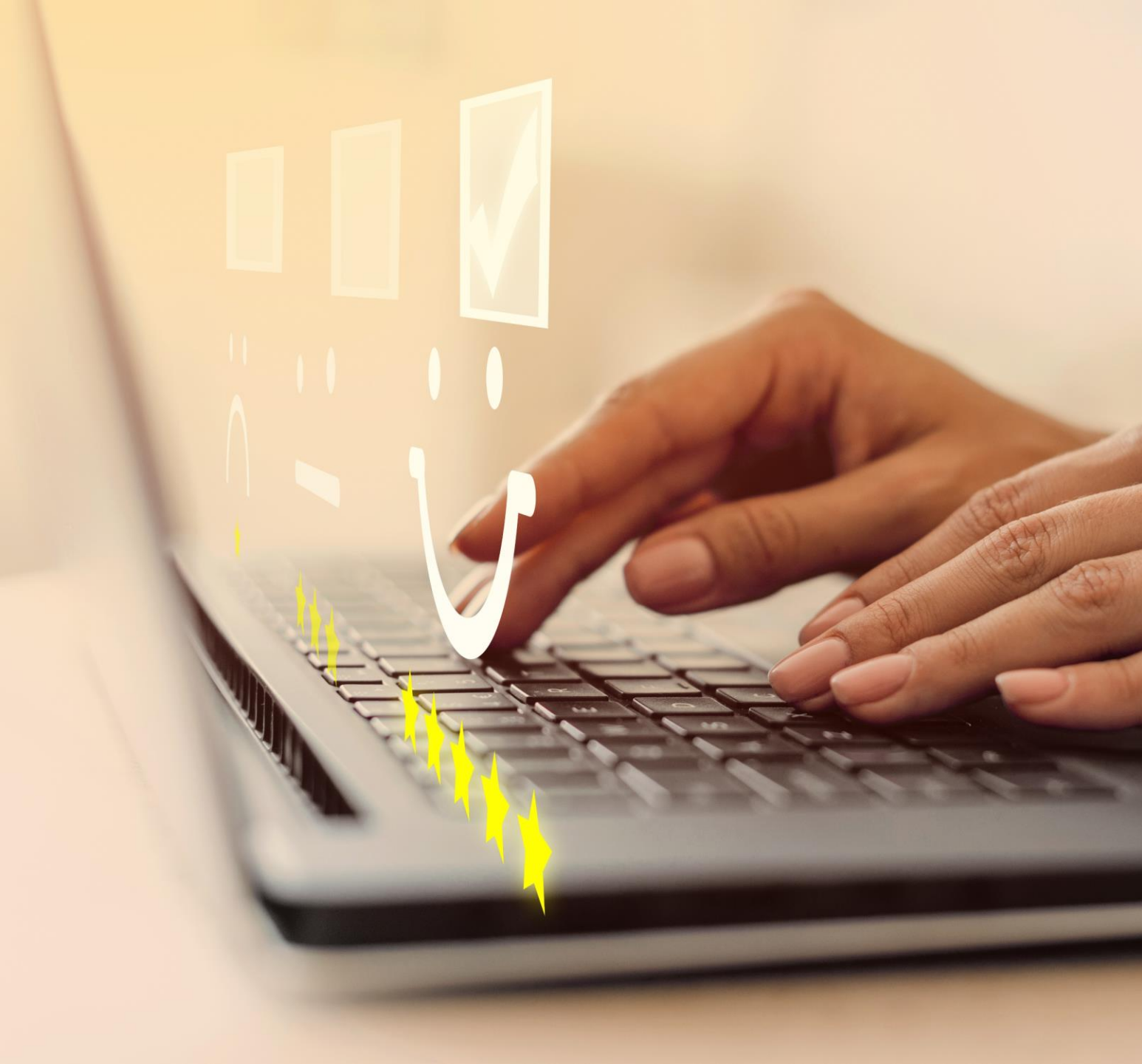
Funding has remained consistent for specialist intervention.

Need for follow on support – support groups etc. 24/7 support

More 121 support, over longer periods of time.

Better access to Mental Health support.

Trauma informed support for Children and Young People. Consistent support with a trusted adult.



## **Domestic Abuse Recommendations and Actions**

---

# Recommendation 1

---

**To develop and implement community-based awareness and resilience to educate communities on domestic abuse and available support services.**

## **Actions:**

- Launch community awareness campaigns
- Train community Ambassadors and champions
- Engage schools and youth provision
- Establish safe spaces within communities
- Launch peer-to-peer domestic abuse support groups



# Recommendation 2

---

**Conduct a comprehensive review of current service demand relative to available resources and pivot resource to meet the needs of the individuals accessing support.**

## **Actions:**

- Map out existing resources and service gaps
- Collect feedback from victim survivors through the Lived Experienced Advisory Group
- Redistribute and scale resources based on findings
- Enhance coordination across agencies and services
- Monitor and adjust resources continuously
- Enhance community awareness of available services

# Recommendation 3

---

**Address inequalities in service provision and ensure equitable access to domestic abuse support services across Worcestershire.**

## **Actions:**

- Engage with communities and victim survivors to understand the specific needs and barriers faced in accessing services in different areas
- Ensure consistency of service delivery across all areas
- Provide tailored support for communities that may face unique barriers to accessing domestic abuse services
- Establish county wide standard for domestic abuse service provision

# Recommendation 4

---

**Raise awareness of funding challenges and advocate for sustainable financial support for domestic abuse services.**

## **Actions:**

- Share data to demonstrate service impact and funding shortfalls
- Lobby for dedicated funding
- Collaborate on joint funding proposals
- Share case studies from victim survivors to illustrate the importance of sustainable funding
- Build community intelligence and resilience to tackle Domestic Abuse at the earliest opportunity
- Improve data collection, identifying areas of focus and good practice where Domestic Abuse is most prevalent

# Recommendation 5

---

**Implement ongoing, flexible training programmes for professionals to better meet the diverse and changing needs of domestic abuse survivors.**

## **Actions:**

- Ensure training is accessible to all professionals and is delivered to meet local need.
- Facilitate peer learning and knowledge sharing.
- Integrate trauma informed and survivor centred approaches in to training modules
- Engage directly with survivors to influence and inform training material
- Develop a system which enables survivors to not repeat their story

# Recommendation 6

---

**Develop and implement a system-wide coordinated approach to effectively address domestic abuse across all relevant sectors.**

## **Actions:**

- Promote community involvement and support networks
- Develop community-based peer support programmes
- Ensure services are integrated drawing on a range skills and expertise's
- Develop clear referral pathways so everyone understands where and how to refer individuals to appropriate support services



# Recommendation 7

---

**Develop and implement “Think Family” approach to domestic abuse intervention, addressing the needs of both individual survivors and their family members.**

## **Actions:**

- Promote trauma informed care for all family members integrate in healthcare and education settings
- Source safe, family friendly housing for families, ensure there is adequate stock to meet the demands
- Provide integrated and holistic support for families
- Ensure children and young people have access to specialist support at the right time
- Build awareness to enable children / young people to understand the meaning of healthy relationship and educate those who are involved in harmful relationships



# Any Questions?

**Contact:**

David Andrewartha  
Advanced Public Health Practitioner  
[dandrewartha@worcestershire.gov.uk](mailto:dandrewartha@worcestershire.gov.uk)