

Overview:

Content of the Local Nature Recovery Strategy

This is the structure of the written part of the Draft Worcestershire Local Nature Recovery Strategy. Find the strategy on the [LNRS Consultation Homepage](#).



Executive Summary

Summarises the content of the Local Nature Recovery Strategy

Chapter 1: Introduction

Explains the purpose of the Local Nature Recovery Strategy, who was involved in preparing it and the timeline of its preparation

Chapter 2: The state of nature in Worcestershire

Describes the landscapes, habitats and species within Worcestershire, introduces the existing Areas of Particular Importance for Biodiversity, and sets out the key threats and pressures impacting nature

Chapter 3: Opportunities for recovering and enhancing nature

Sets out the key mechanisms, incentives and opportunities for delivering nature recovery in Worcestershire

Chapter 4: Priorities for nature's recovery

Presents the vision for LNRS, the draft local Biodiversity Priorities, and the suggested Potential Measures

Chapter 5: Implementation, monitoring and review of LNRS

Sets out what we currently know about the processes and timeline for delivering, monitoring and reviewing the LNRS

Appendices and supporting evidence

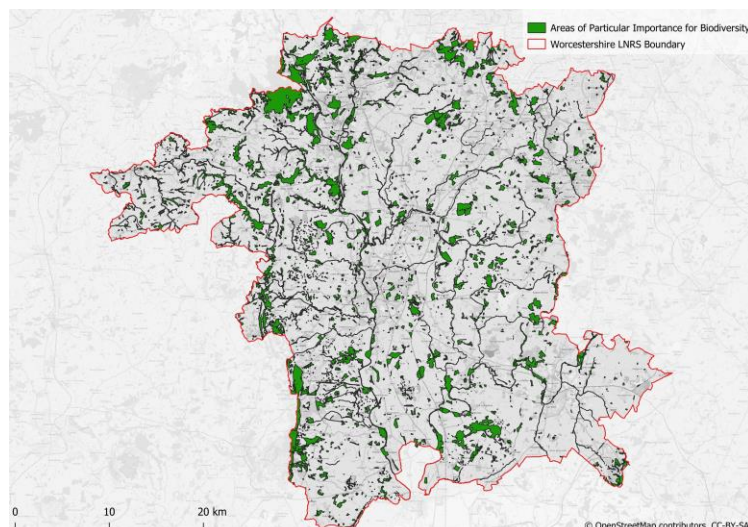
Appended to the strategy is a set of Biodiversity Priority Data Sheets. The data sheets list the Potential Measures contributing to each priority, the wider environmental benefits that could be delivered by undertaking those measures, and the UKHab codes that would be consistent with habitat creation and enhancement for Biodiversity Net Gain.

More information and technical detail on the process of preparing the strategy can be found on the [LNRS Evidence Base](#) webpage.

Overview:

Components of the Local Habitat Map webtool

These are the main components of the Draft Local Habitat Map. Find the map user guide and a link to the webtool at [LNRS Draft Local Habitat Map](#).



Areas of Particular Importance for Biodiversity (APIBs)

These include sites with statutory designations such as Sites of Special Scientific Interest, local non-statutory designations such as Local Wildlife Sites, and habitats deemed by law to be irreplaceable such as ancient woodland, ancient trees and lowland fen. APIB site boundaries must appear on the Local Habitat Map by law.

Areas that could become of particular importance for biodiversity (ACBs)

These are places that have suggested Potential Measures mapped to them. They could become important for biodiversity if the measures are delivered.

Mapped Potential Measures

Mapped measures are displayed on the Local Habitat Map.

Non-Mapped Potential Measures

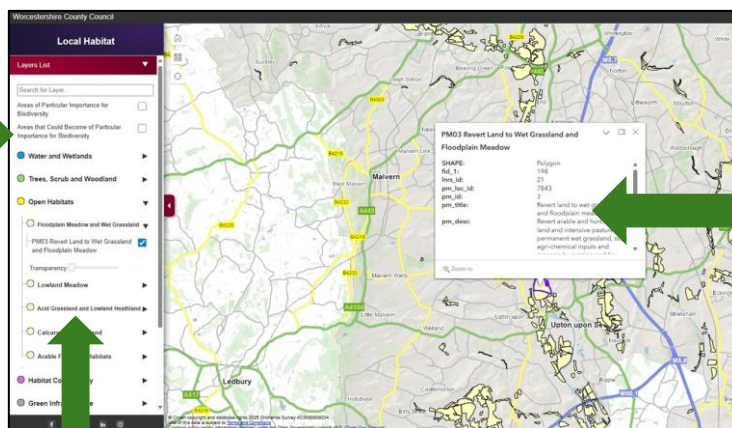
Non-mapped do not appear on the Local Habitat Map and can be delivered anywhere. They have equal importance to mapped measures.

All suggested Potential Measures are entirely voluntary. They do not impose any additional restrictions on how land can or cannot be managed. The Local Habitat Map should be used as a tool to guide decision-making on the best actions we can take to support nature recovery.

Using the Local Habitat Map

[Written and video guides](#) are available to explain the functionality of the Local Habitat Map in detail. Also see the [Glossary of LNRS terminology](#).

Turning on the 'ACB' layer and clicking on the map brings up a list of mapped Potential Measures at that location



The site query 'pop-up' gives you the wording of any mapped Potential Measures, plus:

- Hyperlink to an ArcGIS Storymap with more information about that Potential Measure (see [Habitats Storymap Collection](#) and [Species Storymap Collection](#))
- UKHab codes (relevant to delivery of [Biodiversity Net Gain](#))

Mapped Potential Measures can be toggled on/off individually. Use the 'Search for layer' function at the top of the menu to explore Potential Measures. Search by Potential Measure number, or by habitat or species keywords.