

STATUTORY INSTRUMENTS

2025 No. 628

HIGHWAYS, ENGLAND

The Worcestershire County Council (Hampton Bridge) Scheme 2025 Confirmation Instrument 2025

Made - - - -

27th May 2025

Coming into force in accordance with article 1

The Secretary of State for Transport, makes this Instrument in exercise of the powers conferred by section 106(3) of the Highways Act 1980(a) (“the Act”) and now vested in the Secretary of State(b).

In accordance with section 107(1) and (2) of the Act, the Secretary of State has taken into consideration the reasonable requirements of navigation over the waters affected and includes such plans and specifications as necessary.

1. This Instrument may be cited as the Worcestershire County Council (Hampton Bridge) Scheme 2025 Confirmation Instrument 2025 and shall come into force on the date on which notice that it has been confirmed is first published in accordance with paragraph 1 of Schedule 2 to the Act.

2. The Worcestershire County Council (Hampton Bridge) Scheme 2025 (“the Scheme”) is hereby confirmed.

3. The Scheme as confirmed including its Schedule and plans are set out in the Schedule to this Instrument and copies of the Scheme with its accompanying plans are deposited at the offices of the Department for Transport, Deposited Documents Service, MHCLG, 1 Priory Square, Priory Street, Hastings, East Sussex, TN34 1EA and at the offices of Worcestershire County Council, Wildwood, Wildwood Drive, Worcester WR5 2QT.

Signed by Authority of the Secretary of State



27th May 2025

Martin Gilmour

A Senior Civil Servant in the Department for Transport

THE SCHEDULE Article 3

THE WORCESTERSHIRE COUNTY COUNCIL (HAMPTON BRIDGE) SCHEME 2025

The Worcestershire County Council (hereinafter referred to as “the Council”) make this Scheme in exercise of their powers under Section 106 (3) of the Highways Act 1980 and of all other powers enabling them in that behalf—

1. The Council are authorised to construct over the navigable waters of the River Avon the pedestrian and cycle bridge specified in the Schedule to the Scheme as part of a highway they are proposing to construct between Pershore Road and land on the east bank of River Avon adjacent to Evesham Leisure Centre in Evesham, Worcestershire.

(a) 1980 c. 66. Section 106(3) is amended by section 1(6) of, and paragraphs 1 and 34(1) and (2) of Schedule 1 to, the Infrastructure Act 2015 (c. 7).

(b) S.I. 1981/238.

2. This Scheme may be cited as the Worcestershire County Council (Hampton Bridge) Scheme 2025.

THE COMMON SEAL of
WORCHESTERSHIRE COUNTY COUNCIL

was hereunto affixed
this 23rd day of January 2025
in the presence of—

CS

Clare Taylor
Principal Solicitor

THE SCHEDULE TO THE SCHEME Article 3

PLANS AND SPECIFICATIONS OF THE HAMPTON BRIDGE

The location and general design of the bridge are shown on the plans numbered sealed with the Common Seal of the Council and attached hereto.

- HFB-COW-HFB-ALL-DR-CB-1010-S3_P4 General Arrangement Site Plan
- HFB-COW-HFB-ALL-DR-CB-1015-S3_P4 General Arrangement Developed Elevation
- HFB-COW-HFB-ALL-DR-CB-1020-S3_P4 -General Arrangement Cross Sections – Main Span
- HFB-COW-HFB-ALL-DR-CB-1021-S3_P4 General Arrangement Cross Sections – Ramp

POINTS OF COMMENCEMENT AND TERMINATION

The bridge spans over the River Avon, 650 metres downstream of Abbey Bridge. On the west bank it connects to a ramped pedestrian and cyclist shared-use footway from the Severn Trent Water Access Road at a point 240 metres north of the B4084 Pershore Road.

On the east bank it connects to steps and a ramped pedestrian and cyclist shared-use causeway at a point 330 metres to the west of Evesham Leisure Centre off the A4184 Abbey Road.

SPAN AND DIMENSIONS

The bridge has a main span of 86.5 metres. This comprises:

- A western approach span of 24 metres measured from the earthwork embankment.
- A central section span over the river of 36 metres.
- An eastern approach span of 26.5 metres, measured to the point where the bridge meets the steps and causeway.

The bridge has an overall width of 4.3 metres from outside of handrail to outside of handrail. The shared-use pedestrian and cyclist footway width between handrails is 3.5 metres.

WATERWAY

The minimum navigable waterway width required is 3.7 metres width.

Over the river the bridge will provide an air draft of not less than 4.3 metres high above the typical (non-flood) water level of +19.93 metres Above Ordnance Datum, for a width of not less than 21.0 metres.

HEADWAY

At its highest point, the deck will measure approximately 8.3 metres above the River Avon's typical summer water level, with a parapet extending 1.5 metres above this.

To allow passage of vehicles below the bridge, to the landward side of the bridge support on either side of the river there is a vehicle access accommodation underpass below the bridge structure.

On the west side this is a minimum 4.65 metres clear headroom for 4 metres clear width below the western approach span.

On the east side this is a minimum 4.65 metres clear headroom for 6 metres clear width below the causeway immediately to the east of the bridge connection point.

There are Public Rights of Way along the riverbanks on both sides below the approach spans. A minimum 2.4 metres clear headroom for a minimum width of 2.0 metres is provided.

FORM AND MATERIALS

The bridge will be of a below-deck arch design to optimise views from the bridge while minimising its impact on existing key vantage points including the nearby listed buildings.

In terms of materials, the steelwork of the main span and approach ramps will be weathering steel. The main span will be a deck arch bridge with crossbeams and a longitudinally stiffened steel deck plate. The primary structure will be formed from fabricated structural steel.

The bridge deck will be formed from a steel deck plate with longitudinal stiffeners. Pedestrian/cycle parapets of height approximately 1.4 metres will be installed along the edges of all raised footpaths. On the bridge and ramps, two rails are provided at approximately 1 metre and 1.4 metres to provide a handrail for pedestrians and a rail to protect against falling for cyclists respectively.

The steelwork will be left unpainted as the weathering steel that will be used has a chemical composition that provides increased resistance to corrosion after developing a protective surface patina. The surface finish will be characteristically that of rust but provides the major benefit of avoiding any need for future repainting thus offer significant environmental benefits as well as significantly reducing long-term maintenance costs. This finish will complement the natural surroundings of the structure.

The surfacing on the deck plate will be a thin epoxy grit slip resistant combined waterproofing and surfacing. The deck will have long-fall and cross-fall and include drainage outlets at intervals. By sloping both along the length of the bridge and causeway, and from the centre of the structure to the sides across the width the potential for flooding will be reduced, as will the risk of ice forming on the bridge.

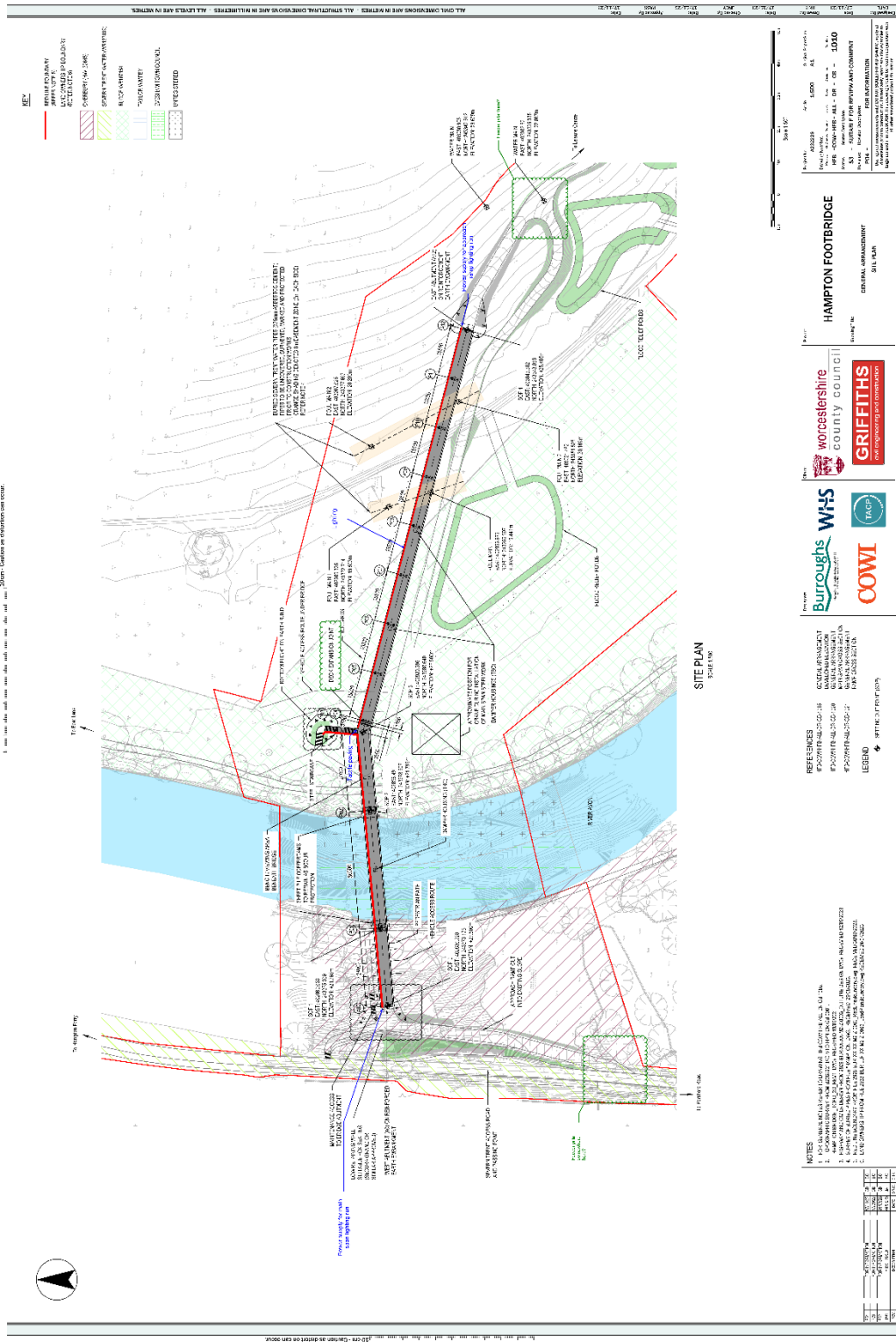
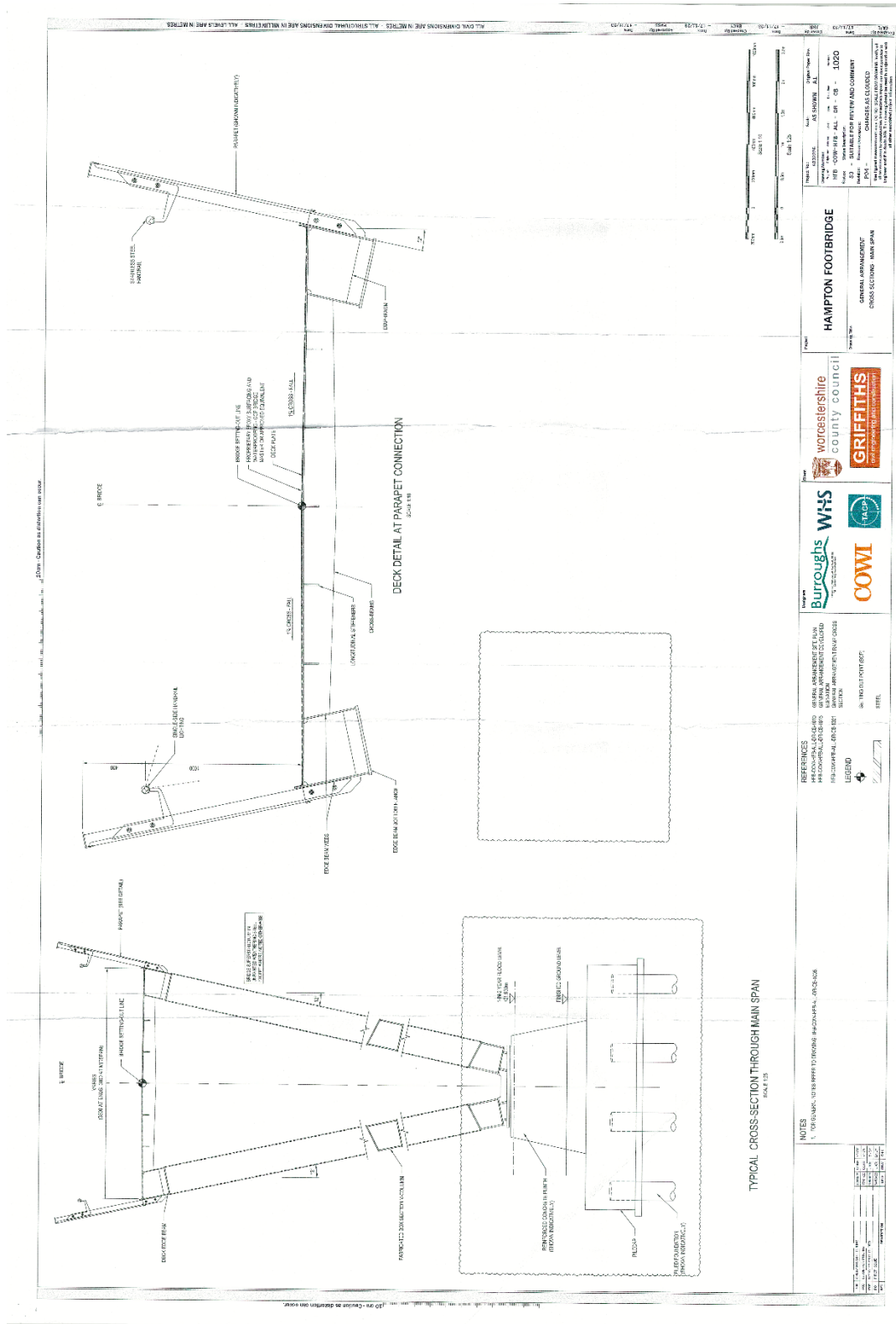
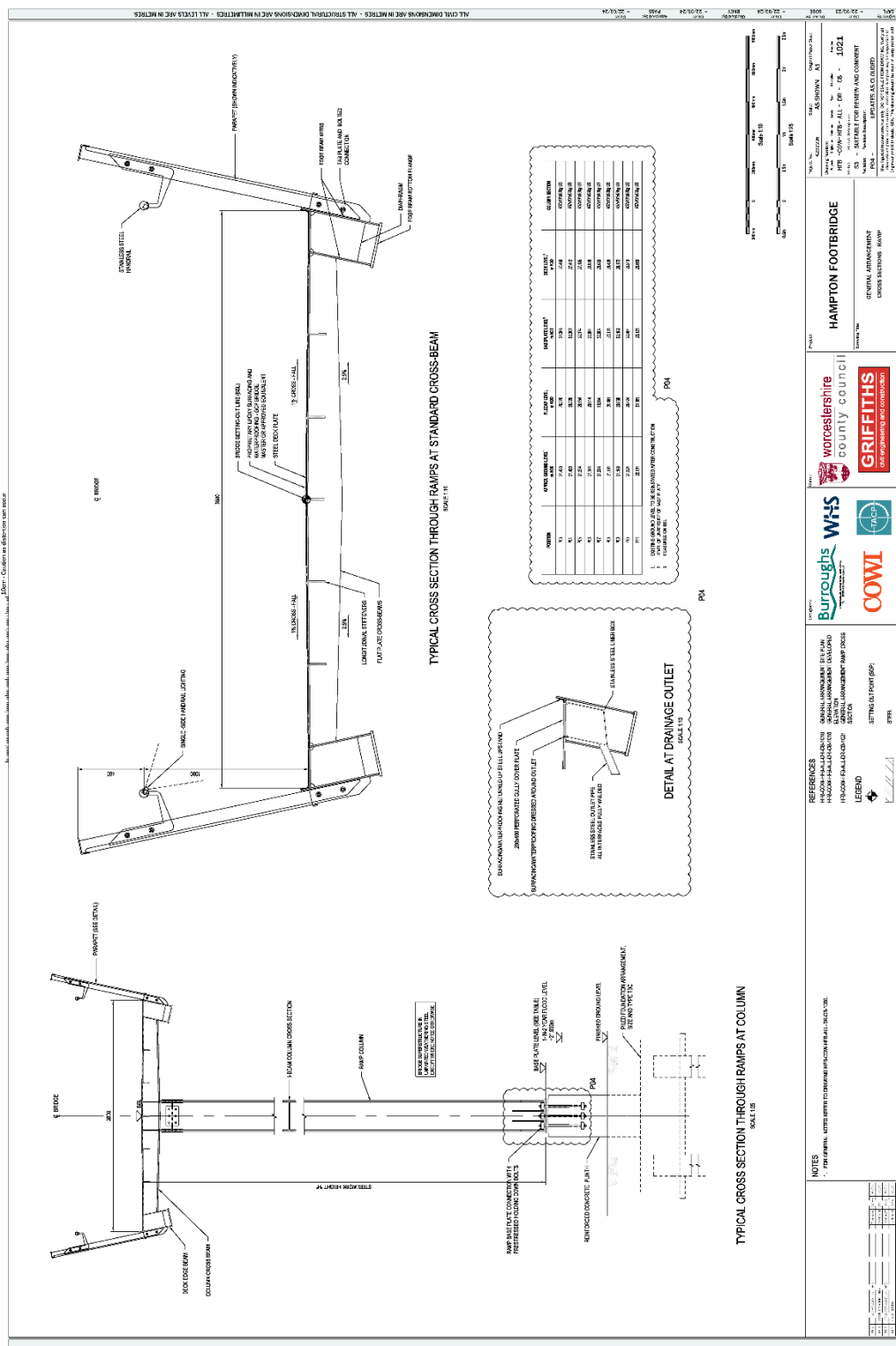


Figure 1 a plan of the site

[illegible]ON APPR...
DATE 1/20/00[illegible]





EXPLANATORY NOTE

(This note is not part of the Instrument)

This Instrument confirms a Scheme to construct a pedestrian and cycle bridge over the navigable waters of the River Avon as part of a highway which Worcestershire County Council are proposing to construct between Pershore Road and land on the east bank of the River Avon adjacent to the Evesham Leisure Centre in Evesham, Worcestershire.

The Schedule to the Scheme, as published by Worcestershire County Council, has been amended in the following manner—

1. In paragraph 1 of the Schedule to the Scheme (Plans and specifications of the Hampon Bridge), the wording “Main Span Cross-sections” has been substituted with “General Arrangement Cross Sections – Main Span Cross-sections”.

2. In the same paragraph, the wording “Cross Sections – Ramp” has been substituted with “General Arrangement Cross Sections – Ramp”.

These amendments ensure the Schedule to the Scheme accurately reflects the Drawing Titles of the plans.