

# WHAT ARE... T LEVELS

## What are T Levels?

T Levels are an alternative to A levels, apprenticeships and other 16 to 19 courses.

T Levels focus on vocational skills and can help students into skilled employment, higher study or apprenticeships.

## What to expect:

- T levels are two-year courses
- They are equivalent to three A-levels
- Placements are at least 315 hours
- Your time is split: 80% classroom learning; 20% industry placement
- T levels could help you get into skilled employment, further study or a higher apprenticeship

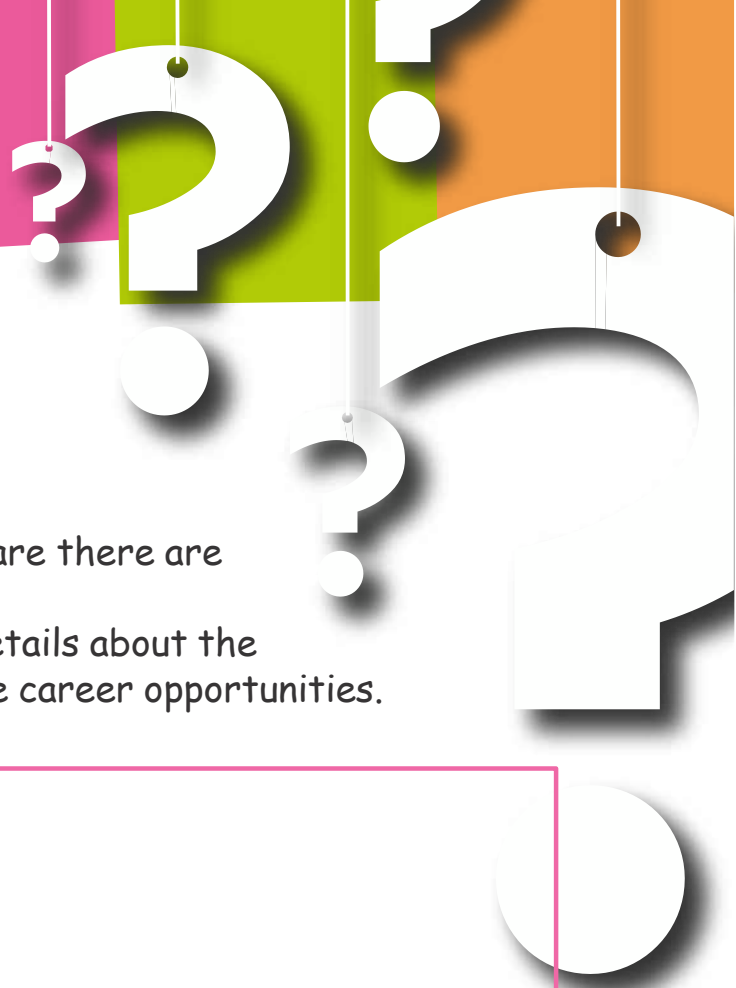
## SEARCH T LEVELS:

[T-Levels](#) |  
[Worcestershire](#)  
[County Council](#)



WHAT ARE...

T LEVELS



## Are you interested in T Levels?

Looking at local providers of T Levels, are there are courses you would be interested in?

You can use the box below to record details about the courses, entry requirements and future career opportunities.

A large, empty rectangular box with a thin pink border, intended for recording details about T Level courses. The box is currently blank.