



ADVANCED MANUFACTURING AND ENGINEERING LABOUR MARKET INFORMATION FACT SHEET



Engineering is one of the broadest sectors in the country and produces a large proportion of the UK's exports to other countries. Many of the services and products in the world have been produced through engineering. As an engineer you could be involved in designing, inventing and maintaining machines, structures and data systems.

The Advanced Manufacturing and Engineering (AME) sector is one of Worcestershire's priority sectors and is key to the future growth of Worcestershire's Economy, particularly in driving innovation and increasing productivity. As a result, there are high levels of employment opportunities within the industry and its sub-sectors. Routes into engineering and manufacturing could include GCSEs and A-Levels, apprenticeships, degree apprenticeships, T-Levels, College and University. For more information on routes into engineering, visit [EngineeringUK](https://www.engineeringuk.org).

WORCESTERSHIRE'S TOP AME BUSINESSES

Victoria P.L.C

Manufacturing of woven or turfed carpets and rugs

Bosch Thermotechnology Ltd

Manufacturing of central heating radiators and boilers

Titan Europe Limited

Manufacture of parts and accessories for motor vehicles

F.W. Thorpe PLC

Manufacture of electric lighting equipment

Malvern Panalytical Limited

Manufacture of electronic measuring testing equipment

Yamazaki Mazak U.K.

Manufacturing of machine tools

Southco Manufacturing

Manufacture of locks and hinges

Morgan Technical Ceramics

Manufacture of ceramic products

Solid Slate PLC

Manufacture of telegraph and telephone apparatus and equipment

Forest Garden Group Ltd

Sawmilling and planning of wood



DEVELOPING AREAS

NET ZERO

Net zero describes the balance between the amount of greenhouse gases (such as carbon dioxide) that is added to the atmosphere in comparison to what is removed. As a country, the UK has pledged to be net zero by 2050. Engineering and advanced manufacturing are essential sectors to support the race to become net zero through the production of new renewable energy sources such as solar and wind, developing innovative ways for zero emission travel and the manufacturing of food.

GREEN JOBS

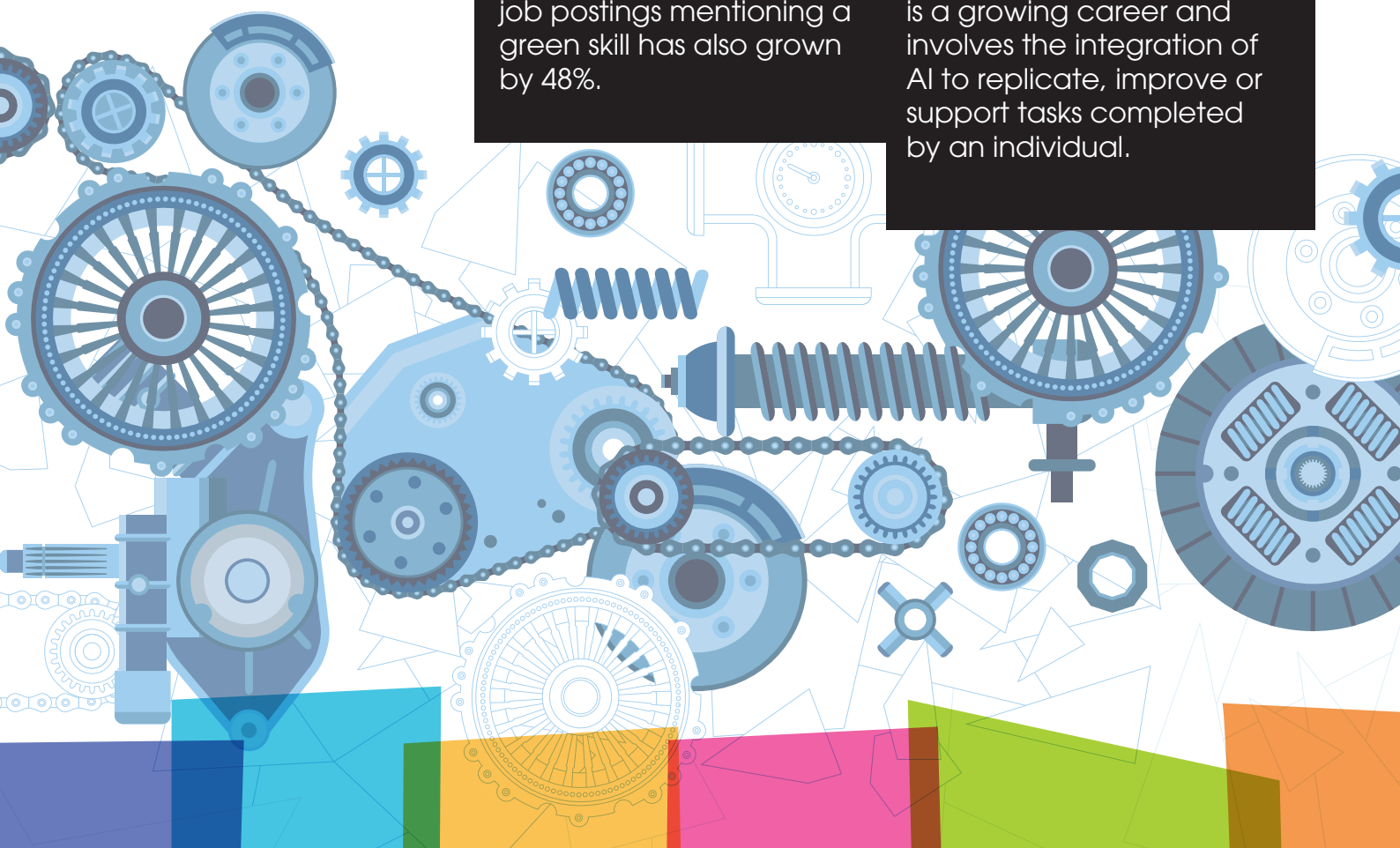
Green jobs contribute to the preservation and restoration of the environment and our planet, and these roles are on the rise across many industry sectors. Engineering and advanced manufacturing will continue to see an increase in opportunities to work within a green job. Roles could include [Environmental Engineer](#), [Energy Engineer](#), [Land Based Engineer](#) and [Manufacturing Engineer](#).

The frequency of UK green job titles among engineering job postings increased by 55% in the past five years, and the number of engineering job postings mentioning a green skill has also grown by 48%.

AUTOMATION AND AI

[Automation engineering](#) involves the design and development of machines and robots which can perform specific tasks that are both accurate and time efficient. You could take either a mechanical or software route into automation. As technology continues to expand, further demand for automated processes will likely increase, with the need for engineers to design, develop and manage these machines.

Artificial Intelligence (AI) is the integration of computer software to replicate human behaviour. An [artificial intelligence or machine learning engineer](#) is a growing career and involves the integration of AI to replicate, improve or support tasks completed by an individual.



LOCAL AND NATIONAL ADVANCED MANUFACTURING AND ENGINEERING DATA

WORCESTERSHIRE ADVANCED MANUFACTURING AND ENGINEERING (AME) DATA



IN WORCESTERSHIRE

29,300
EMPLOYED IN AME (2022)

2,270
BUSINESSES (2022)

11%
OF ALL EMPLOYMENT
(WEST MIDLANDS 10.1%)
(ENGLAND 7.2%)



£1,276m

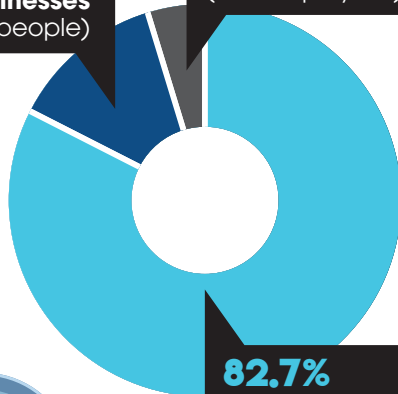
GVA generated by the top 50 businesses 2022

(GVA measures the contribution to an economy by one individual, sector or region)
Increase of £338m from previous year

12.7%
small businesses
(employing 10-49 people)

4.6%
medium and large businesses
(50+ employees)

82.7%
micro businesses
(employing 0-9 people)



WORCESTERSHIRE AME JOBS BY DISTRICT

Redditch	25.6%
Wychavon	22.2%
Worcester	16.0%
Wyre Forest	12.6%
Malvern Hills	12.3%
Bromsgrove	11.3%

LOCAL AND NATIONAL ADVANCED MANUFACTURING AND ENGINEERING DATA

NATIONAL ADVANCED MANUFACTURING AND ENGINEERING (AME) DATA



3.65 MILLION

unique job postings in the UK relating to engineering occupations, representing approximately 25% of all job postings in the country. ICT and software occupations accounted for the largest shares of these engineering job posting.

TOP 10 COMMON SKILLS REQUESTED (Oct 21-Sept 22)

- Communications
- Management
- Customer Service
- Problem Solving
- Planning
- Operations
- Detail Oriented
- Leadership
- Sales
- Self-Motivation

Median advertised salaries
of the engineering sector are

30% HIGHER

than the national average
(£38,600 v £30,000)

Top 5 Median Advertised Salary (UK Oct 2021-Sept 2022)

ICT and Software	£50,112
Civil Engineering	£44,992
Design and Development	£41,152
Environmental, Energy & Earth	£37,568
Skill Construction Trades	£37,056

Minimum years of experience
requested for position.

37.2% Junior (0-2years)
44.4% Mid (3-5years)
15% Experienced (6-10years)
3.4% Senior (10+years)

Sources:

Engineering UK Report 2020
[Engineering Skills Needs Discussion Paper](#)
[WLEP Plan for Growth 2020-2040](#)
WLEP Worcestershire Economy Report 2023
Overview of the engineering and manufacturing sector in the UK | [Prospects.ac.uk](#)
Engineering and manufacturing | [Apprenticeship Industry Guide \(ucas.com\)](#)
Engineering Skills Needs-Now and Into the Future Report