

Census 2021 briefing no. 2- Demography, migration, ethnicity and veterans (ONS phase 2, part 1)

Information Lead: Matt Fung

Version: 1

Prepared By: Mike Rice

Date: 07/03/2023

Table of Contents

1. Summary	2
2. Introduction	4
3. Demography - Population	4
4. Demography – Household size	11
5. Demography - Number of usual residents in households and communal establishments.....	14
6. Demography – Household composition	16
7. Demography – Country of birth	19
8. Demography – Length of residence	22
9. Demography – Number of short-term UK residents	24
10. Address one year before the census.....	27
11. Households by deprivation	30
12. UK Armed Forces veteran population.....	32
13. Ethnic Group	35
14. Language.....	41
15. Religion.....	45

1. Summary

ONS are releasing the next phase of census statistics between 2nd November through to December and early 2023. Topic summaries released so far are: -

- demography and migration
- UK armed forces veterans
- ethnic group, national identity, language, and religion

This report updates the findings from the releases so far, and this section includes a summary of the main headline findings.

- 1. Worcestershire has an older age structure than is seen nationally, and the number of older people is increasing.** This has consequences for the county in terms of access to services including GP's and hospitals, general health of the population, ratio of full-time workers to people of retirement age and levels of resources. Malvern Hills, Wyre Forest, and Wychavon all have particularly high levels of older residents. Almost 22% of the population in Worcestershire are aged 66-plus, with almost 3% aged 85-plus. Proportions of older people are particularly high in Malvern Hills, Wychavon, and Wyre Forest.
- 2. The number of children in Worcestershire is increasing, but the increase is not as pronounced as is being seen nationally.** This has potential consequences for school and nursery provision, access to health care, GP services and dentists, family support services and housing. There are over 117,900 children living in Worcestershire, with numbers increasing by 2.6% since the 2011 census. Increases in numbers of children over the past ten years are notable in Bromsgrove and Wychavon and are particularly high across the county in the 5-10 age group.
- 3. Worcestershire has a lower proportion of one-person households and a lower proportion of 5-plus person households than is seen nationally.** This means that levels of household overcrowding in the county are likely to be generally low, but it is noted that there are areas within Worcestershire with relatively high proportions of large households, notably in areas within Worcester City and Redditch.
- 4. Worcestershire has a lower proportion of communal establishment residents than is seen nationally.** There are however small areas with high proportions of communal establishments, especially in Malvern Hills and Bromsgrove in areas with multiple care homes, and in the areas containing HMP Long Lartin and HMP Hewell.
- 5. Worcestershire has a higher proportion of one-person households where the occupant is of retirement age than is seen nationally, and a lower proportion of lone-parent households. The number of one-person households in which the occupant is of retirement age is increasing.** The high proportion of older one-person households could contribute to social isolation and loneliness, as well as potential lack of mobility and access to services and health care, potential increased health concerns and future requirements of access to social care.
- 6. Worcestershire has a lower proportion of people born overseas than is seen nationally, a lower proportion of people who have lived in the UK for a relatively short period of time and a**

lower proportion of short-term residents. It is noted that there are areas with high proportions of people born overseas, including areas in Worcester, Redditch, and Evesham.

- 7. Worcestershire has a lower proportion of people who have changed address in the previous year than is seen nationally.** It is noted however that proportions of people who lived elsewhere one year previously are particularly high in Worcester City, due to a combination of students leaving term-time accommodation and returning to the area, people moving into term-time student accommodation to access Worcester University, people moving in for other reasons from other parts of the UK, and people from outside the UK moving into Worcester City.
- 8. Worcestershire has a lower proportion of households classified as deprived than is seen nationally, and the proportion is decreasing.** The four dimensions of deprivation are employment, education, health and disability, and household overcrowding. Higher proportions of households classified as deprived in at least one dimension can however be seen in Wyre Forest and Redditch, and in small areas particularly in Worcester.
- 9. Worcestershire has a higher proportion of people who have previously served in the armed forces than is seen nationally.** This vital information on past service in the UK Armed Forces will help service providers and others to support veterans in line with the Armed Forces Covenant. There are particularly high proportions of veterans in Droitwich, Malvern and Malvern Wells, areas across the south-west of Wychavon, including Pershore, Broadway, Fladbury and Eckington.
- 10. Worcestershire has a lower proportion of people who are from an ethnicity other than White: English, Welsh, Scottish, Northern Irish or British than is seen nationally, although the proportion is increasing in the county.** The increasing numbers of people from ethnic minorities in Worcestershire leads to a more diverse community especially in areas where there are high proportions of people from ethnic minorities, such as parts of Redditch and Worcester. It is noted that socioeconomic outcomes and health outcomes can vary across ethnicities. Highest ethnic minorities in Worcestershire include the White: Other group, most notably Polish ethnicities, in all areas, the Asian Pakistani group, notably in Redditch and Bromsgrove, and the Asian Indian group, notably in Bromsgrove.
- 11. Worcestershire has a lower proportion of people who cannot speak English well or at all than is seen nationally, and a lower proportion of households with no English speakers, although proportions of both are increasing.** This information helps to target, deliver, and facilitate the provision of public services, for example, to help identify the need for translation and the interpretation for providing English language lessons. Poor English language skills are also linked to worse health and lower employment rates. Approximately 6,500 households have no people within them who have English as a main language, and 4,400 people do not speak English well or at all. Proportions are particularly high in certain areas in Worcester, Redditch, and Evesham.
- 12. Worcestershire has a lower proportion of people who have a religion other than “Christianity” or “No Religion” than is seen nationally, although proportions are increasing.** The religion with the highest proportion other than Christianity in the county is Muslim, with 1.9% of people identifying as being from the Muslim faith.

2. Introduction

ONS are in the process of releasing the next phase of census statistics from Autumn 2022. A series of data and supporting information grouped by a similar theme, known as topic summaries, will be made available from 2nd November through to December and early 2023

The topic summaries in publication order are:

- demography and migration - released on 2nd November.
- UK armed forces veterans - released on 14th November.
- ethnic group, national identity, language, and religion – released on 29th November.

Datasets released since the publication of this paper include: -

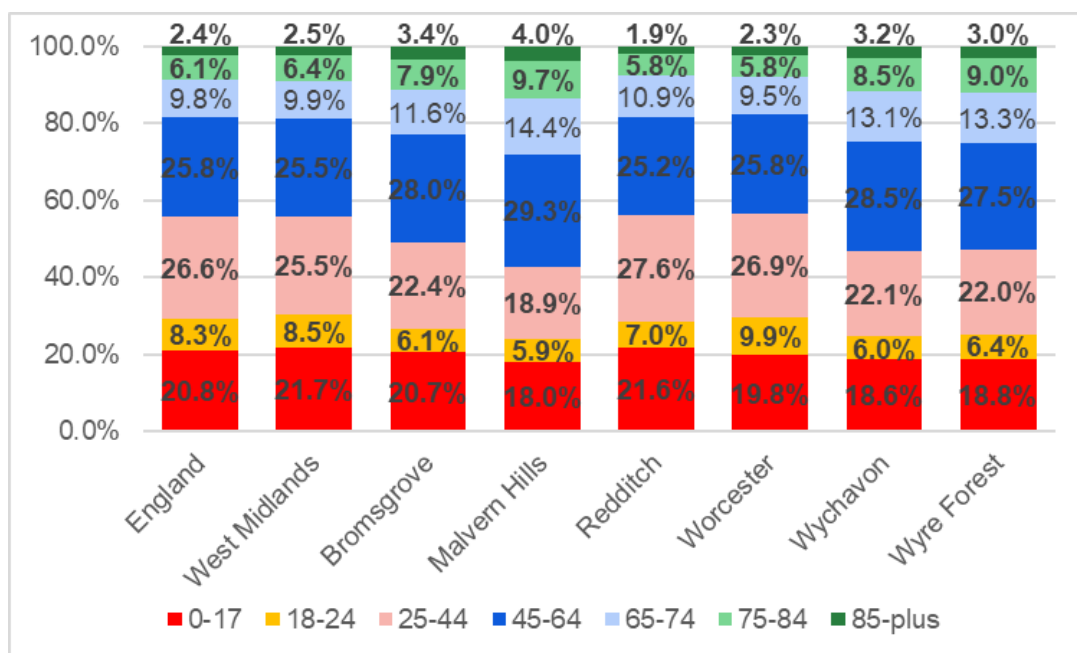
- labour market and travel to work – to be released 8th December.
- housing
- sexual orientation and gender identity
- education
- health, disability, and unpaid care

This report updated the census knowledge based on the data released at the time.

3. Demography - Population

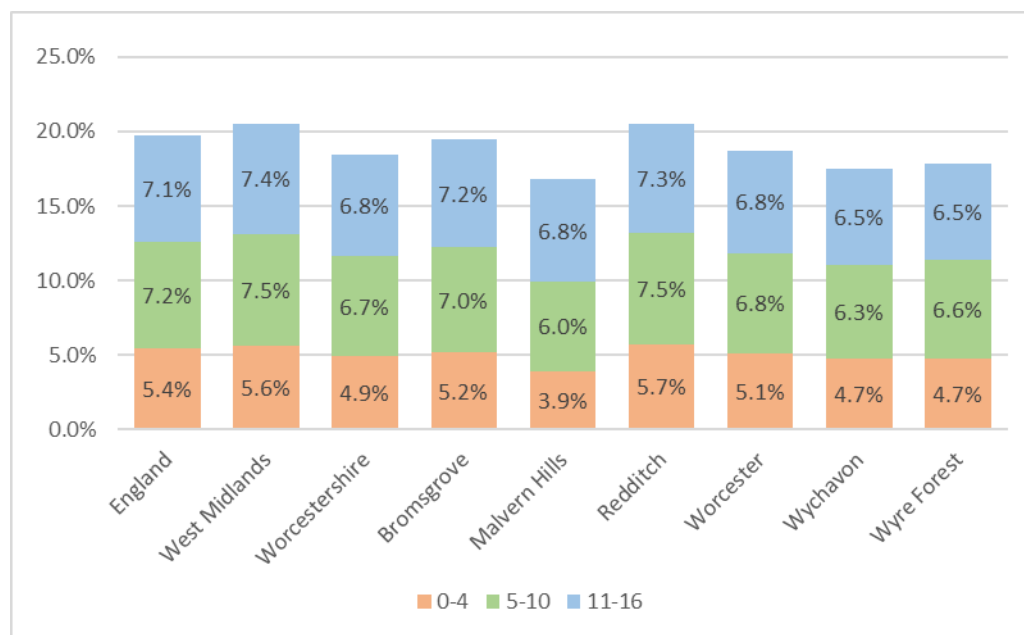
This dataset provides Census 2021 estimates that classify usual residents in England and Wales by single year of age. This enables key age groups to be created that were not available from the initial census release which included only splits by 5-year age groups.

Age breakdown by broad age groups



- Proportions of people in older age groups are higher in Worcestershire than is the case for the whole of England and the whole of the West Midlands.
- The 66-plus age group, representing those over retirement age in the UK, number over 130,900 people in the county.
- Almost 22% of the population in Worcestershire are aged 66-plus. This is higher than the national (just over 17%) and regional (less than 18%) figures.
- Proportions of people of retirement age are particularly high in Malvern Hills at almost 27%, Wyre Forest at over 24%, and Wychavon at over 23%.
- Proportions of people aged 66-plus are less than 17% in Worcester, lower than the national and regional averages, and are also relatively low in Redditch, at just over 17%.
- Almost 3% of people in Worcestershire are aged 85-plus. The proportion is 4% in Malvern Hills and is also relatively high at over 3% in Wychavon and Wyre Forest.
- In contrast, Worcestershire has a lower proportion of younger people than county and regional averages.
- Less than 20% of people in Worcestershire are aged 0-17, compared to almost 21% nationally. This represents over 117,900 children living in Worcestershire.
- Proportions of people aged 0-17 are particularly low in Malvern Hills, at just 18%. Proportions of children are also low in Wychavon and Wyre Forest.
- There are a relatively high proportion of children in Redditch, at almost 22%. This is higher than the regional and national averages. In Bromsgrove, almost 21% of the population are aged 0-17, similar to the national average, whilst in Worcester the proportion is almost 20%.
- Less than 7% of the population in the county are aged 18-24, compared to over 8% in the whole of England. There are over 41,400 people aged 18-24 living in the county.
- The proportion of people aged 18-24 is particularly low in Malvern Hills, Wychavon and Bromsgrove, each at around 6%.
- The proportion of people aged 18-24 is highest in Worcester, at almost 10%. This is higher than national and regional averages and is linked to the University of Worcester which attracts students and young people to the area.
- Just over 23% in Worcestershire are aged 25-44 compared to the national figure of almost 27%. This represents over 140,800 people aged 25-44 living in Worcestershire.
- Proportions of people aged 25-44 are particularly low in Malvern Hills, at less than 19%. Proportions are also low at just over 22% in Wyre Forest, Wychavon and Bromsgrove.
- There are relatively high proportions of people aged 25-44 in Worcester at almost 27%, and Redditch at almost 28%. Proportions of 25-44-year-olds in both districts are higher than the national and regional averages.

Proportion of total population of children by age group



The graph shows the proportion of children in Worcestershire and each of the districts by key children's age groups.

- The proportion of people aged 0-4 is slightly lower in Worcestershire, at less than 5%, than in the whole of England, at over 5%. Proportions aged 0-4 are highest in Redditch, with relatively high proportions in Bromsgrove and Worcester.
- The proportion of people aged 5-10, which approximately equates to primary school ages, is lower in Worcestershire at less than 7%, than the national average of over 7%. Proportions aged 5-10 are highest in Redditch, at 7.5%, and are also relatively high in Bromsgrove and Worcester.
- The proportion of people aged 11-16, which approximately equates to the secondary school ages, is slightly lower in Worcestershire than the national average. Proportions aged 11-16 are highest in Redditch and Bromsgrove.

Population changes by key age groups

This section summarises changes by specific key age groups since the previous censuses in 2011 and 2001.

Population change – 0-17 age group

	2001	2011	2021	Change 2001-21 - numbers	Change 2001-21 - percent	Change 2011-21 - numbers	Change 2011-21 - percent
England	11,132,847	11,336,960	11,774,602	641,755	5.8%	437,642	3.9%
Worcestershire	119,182	114,954	117,938	-1,244	-1.0%	2,984	2.6%
Bromsgrove	19,112	19,019	20,493	1,381	7.2%	1,474	7.8%
Malvern Hills	15,245	14,603	14,313	-932	-6.1%	-290	-2.0%
Redditch	19,111	18,712	18,797	-314	-1.6%	85	0.5%
Worcester	21,064	20,809	20,543	-521	-2.5%	-266	-1.3%
Wychavon	23,984	22,761	24,659	675	2.8%	1,898	8.3%
Wyre Forest	20,666	19,050	19,135	-1,531	-7.4%	85	0.4%

- Increases in numbers of children have been lower in Worcestershire than have been seen nationally.
- The number of children in the county has fallen slightly since 2001, although there has been a rise of almost 3,000, representing an increase of almost 3%, since 2011. This compares to a rise nationally of almost 4% over the same time period.
- Within Worcestershire, highest increases in numbers of children have been seen in Bromsgrove and Wychavon. Increases in both these districts have been around 8% since 2011.
- In contrast, Malvern Hills and Worcester have seen slight decreases in the numbers of people aged 0-17 since 2011 of 2% and just under 1% respectively.
- The number of children in Wyre Forest and Redditch has been largely constant since 2011, although Wyre Forest has seen a notable decrease since 2001.

Population change – 5-10 age group

	2001	2011	2021	Change 2001-21 - numbers	Change 2001-21 - percent	Change 2011-21 - numbers	Change 2011-21 - percent
England	3,783,820	3,559,688	4,043,222	259,402	6.9%	483,534	13.6%
Worcestershire	40,462	36,020	40,397	-65	-0.2%	4,377	12.2%
Bromsgrove	6,622	5,954	6,963	341	5.1%	1,009	16.9%
Malvern Hills	4,959	4,424	4,792	-167	-3.4%	368	8.3%
Redditch	6,400	5,852	6,518	118	1.8%	666	11.4%
Worcester	7,139	6,585	7,032	-107	-1.5%	447	6.8%
Wychavon	8,345	7,260	8,378	33	0.4%	1,118	15.4%
Wyre Forest	6,989	5,945	6,713	-276	-3.9%	768	12.9%

The 5-10 age group approximately equates to the primary school ages

- The number of people aged 5-10 Worcestershire around the same number as in 2001 but has increased since 2011.
- The increase since 2011 in the county of people aged 5-10 is just over 12%, slightly lower than the national average of almost 14%.

- Increases in the 5-10 age group since 2011 are particularly high in Bromsgrove, at almost 17%, and Wychavon, at over 15%. The smallest increase was in Malvern Hills, at just over 8%.

Population change – 11-16 age group

	2001	2011	2021	Change 2001-21 - numbers	Change 2001-21 - percent	Change 2011-21 - numbers	Change 2011-21 - percent
England	3,820,968	3,793,376	4,012,383	191,415	5.0%	219,007	5.8%
Worcestershire	41,717	40,535	41,241	-476	-1.1%	706	1.7%
Bromsgrove	6,925	6,983	7,179	254	3.7%	196	2.8%
Malvern Hills	5,895	5,789	5,429	-466	-7.9%	-360	-6.2%
Redditch	6,624	6,100	6,351	-273	-4.1%	251	4.1%
Worcester	6,754	6,660	7,097	343	5.1%	437	6.6%
Wychavon	8,183	8,346	8,578	395	4.8%	232	2.8%
Wyre Forest	7,339	6,657	6,608	-731	-10.0%	-49	-0.7%

The 11-16 age group approximately equates to the secondary school ages

- The number of people aged 11-16 Worcestershire has decreased slightly since 2001 but has increased slightly since 2011. The increase is not as pronounced as the rise in 5–10-year-olds.
- The increase since 2011 in the county of people aged 11-16 is less than 2%, lower than the national average of almost 6%.
- Increases in the 11-16 age group since 2011 are relatively high in Worcester, at almost 7%, and Redditch, at over 4%. Numbers of 11-16-year-olds have decreased by over 6% in Malvern Hills since 2011 and have remained largely constant in Wyre Forest.

Population change – retirement age group

	2001	2011	2021	Change 2001-21 - numbers	Change 2001-21 - percent	Change 2011-21 - numbers	Change 2011-21 - percent
England	9,025,373	10,275,666	9,825,272	799,899	8.9%	-450,394	-4.4%
Worcestershire	103,417	129,355	130,929	27,512	26.6%	1,574	1.2%
Bromsgrove	17,603	22,352	21,621	4,018	22.8%	-731	-3.3%
Malvern Hills	17,304	21,063	21,145	3,841	22.2%	82	0.4%
Redditch	11,173	14,625	15,210	4,037	36.1%	585	4.0%
Worcester	15,506	17,387	17,228	1,722	11.1%	-159	-0.9%
Wychavon	23,014	29,556	31,282	8,268	35.9%	1,726	5.8%
Wyre Forest	18,828	24,372	24,437	5,609	29.8%	65	0.3%

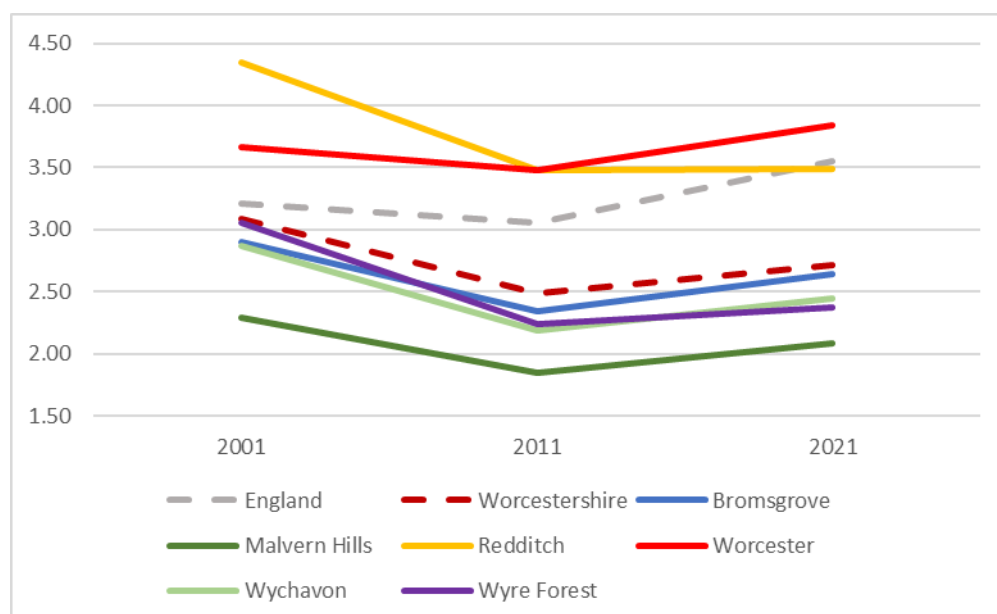
It is noted that between 2011 and 2021 retirement age in the UK has changed. Retirement age was 60 for women and 65 for men, but a phased change took place to bring the retirement age for females in line with males between 2010 and 2020. The rise of the state pension age to 66 for both

men and women has also been implemented, with a future rise in the state pension age for both men and women to 68 between 2024 and 2046.

The exact current pension age for women is complex and depends on the exact date of birth, and there is no “forced” retirement age in the UK with people able to work on after they have reached pension age. For simplicity, the age of 66 and over has been chosen to illustrate people of pension age in 2021, compared to retirement ages being age 60 for women and 65 for men in 2001 and 2011.

- It can be seen nationally that there was a substantial increase in the number of people of retirement age between 2001 and 2011 of about 1.25 million. The changes in retirement age between 2011 and 2021 resulted in a decrease of people of retirement age in England, of around 450,000.
- A substantial increase between 2001 and 2011 of people of retirement age of around 25,000 can be seen in Worcestershire, representing a rise of almost 27%, compared to a 9% rise nationally. Numbers of people of retirement age in the county are rising notably higher than the national average.
- The number of people of retirement age has not decreased due to the retirement age changes in Worcestershire. Between 2011 and 2021 there has been a further slight increase of people of retirement age in the county of almost 1,600, representing a rise of just over 1%.
- It is worth noting that the number of people aged 60-plus female and 65-plus male in Worcestershire is almost 158,000 in 2021, representing an increase of over 28,000 people (almost 22%) on 2011 levels.
- The number of people of retirement age has increased most notably in Wychavon and Redditch, of almost 6% and 4% since 2011 respectively.
- Bromsgrove has seen a small decrease of just over 3% of people of retirement age in the past ten years, whilst numbers in the other districts have remained largely constant.

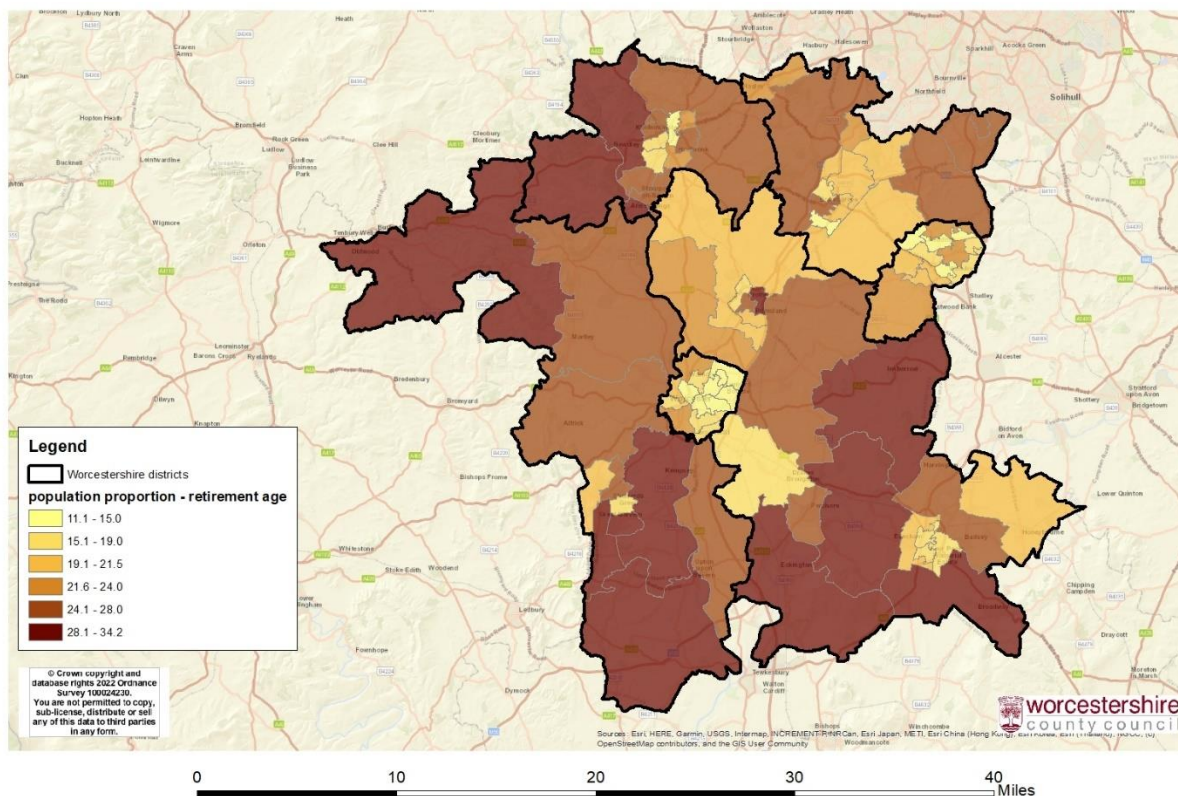
Population change – working age: retirement age ratio



The proportion of working age to retirement age people (otherwise known as the elderly dependency ratio) gives an indication of the relative economic burden of the workforce due to the retired component of the dependent population and has potential ramifications for the level of financial stress on the working age population.

- The ratio of working age to retirement age in Worcestershire currently stands at 2.71 compared to 3.55 nationally. The proportion in Worcestershire was close to the national average in 2001 but has decreased notably since then, in contrast to the picture nationally, where the change in retirement age has resulted in a higher ratio in 2021 than in 2001.
- The working age to retirement age ratio is particularly low in Malvern Hills, at less than 2.1, and in Wyre Forest and Wychavon, at less than 2.5.
- The working age to retirement age ratio is notably higher in Worcester at over 3.8 (higher than the national average) and Redditch at just under 3.5 (similar to the national average).

Proportion of population who are retirement age by MSOA



MSOA is currently the lowest dataset for which full age breakdowns are available. The map shows the proportion of people who are of retirement age by MSOA in Worcestershire. The map shows high proportions of people of retirement age in several small areas in the county, including: -

- The rural area in the south of Malvern Hills district, including the south of Malvern town, Hanley and Longdon
- The rural area in north-west of Malvern Hills district around Tenbury, and across into the west of Wyre Forest district, including Bewdley.

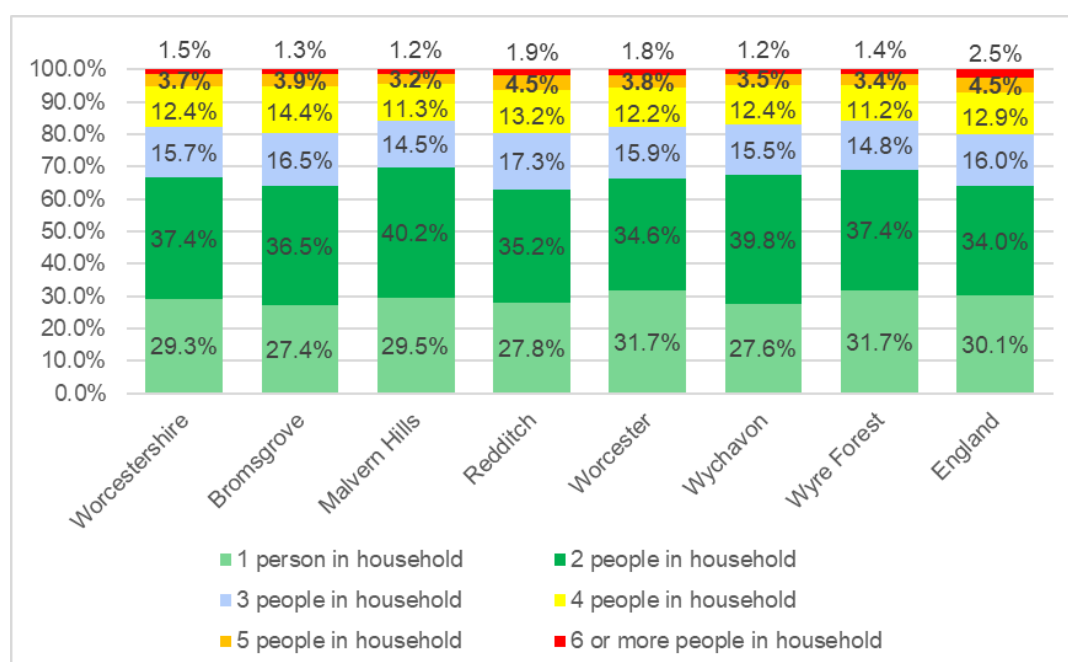
- Much of the rural area in the south of Wychavon, including Broadway, Eckington and Inkberrow, and
- The area in the east of Droitwich in Wychavon.

4. Demography – Household size

This dataset provides Census 2021 estimates that classify all household spaces in England and Wales by household size. It is noted that a high proportion of households with high numbers of occupants could indicate an overcrowding problem, or it could indicate relatively high numbers of large families living in large houses with multiple bedrooms.

Size of household – Worcestershire and districts

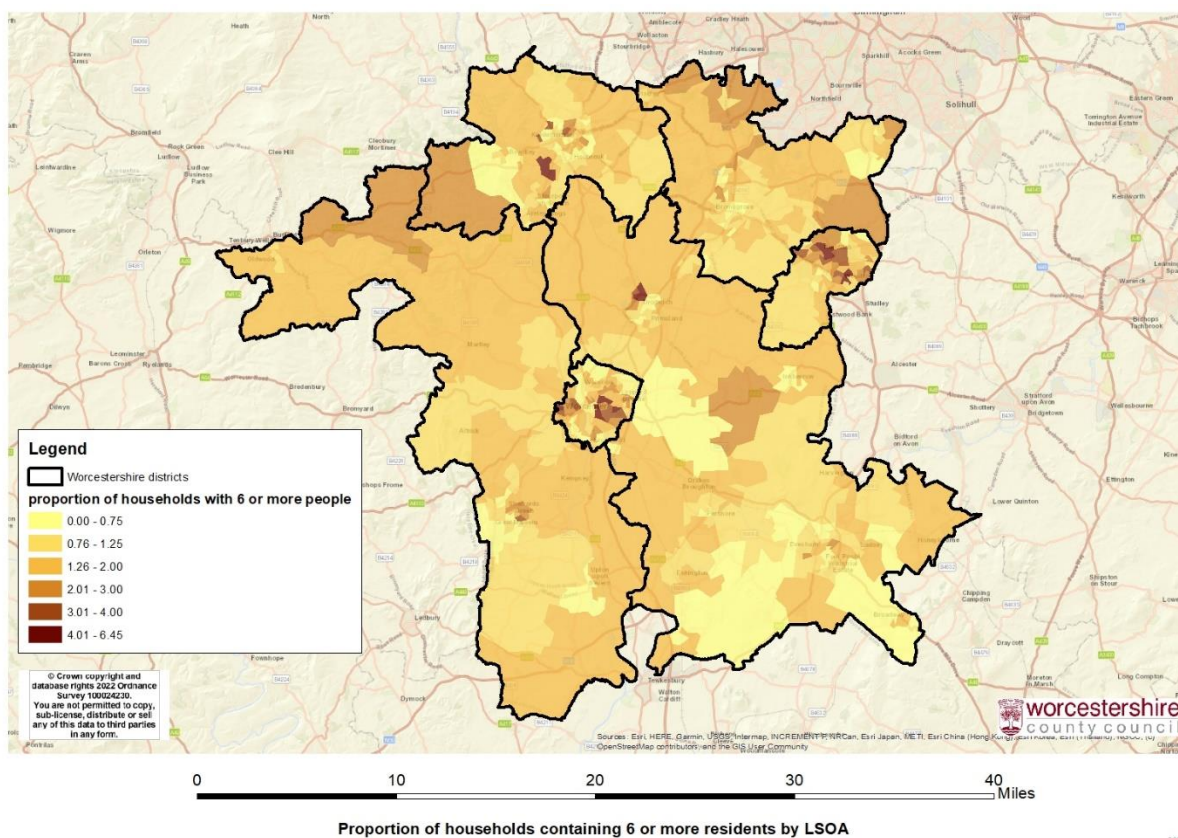
	Worcestershire	Bromsgrove	Malvern Hills	Redditch	Worcester	Wychavon	Wyre Forest	England
Total	259,934	41,265	34,890	36,378	44,724	57,357	45,318	23,436,090
1 person in household	29.3%	27.4%	29.5%	27.8%	31.7%	27.6%	31.7%	30.1%
2 people in household	37.4%	36.5%	40.2%	35.2%	34.6%	39.8%	37.4%	34.0%
3 people in household	15.7%	16.5%	14.5%	17.3%	15.9%	15.5%	14.8%	16.0%
4 people in household	12.4%	14.4%	11.3%	13.2%	12.2%	12.4%	11.2%	12.9%
5 people in household	3.7%	3.9%	3.2%	4.5%	3.8%	3.5%	3.4%	4.5%
6 or more people in household	1.5%	1.3%	1.2%	1.9%	1.8%	1.2%	1.4%	2.5%



- The St Johns and Bromsgrove High School area in Bromsgrove. This includes an area with over 62% of households are one-person households.
- The Netherwich area of Droitwich, and
- The Abbey Park area of Pershore.

The map below shows the proportion of households that contain 6 persons or more at LSOA level.

Proportion of 6 or more person households at LSOA level



Several LSOA's have proportions of 4% or more households with 6 or more residents. These include:

- Areas in Worcester covering Tolladine and Gorse Hill, Ronkswood, and parts of Wylde's Lane in the central areas of the city
- Dines Green in the west of Worcester.
- The Birchen Coppice and the Rifle Range areas in Kidderminster,
- The Redditch areas covering the Trinity High School area and Smallwood in the north of the town, and the and the St Thomas More First School area and Woodrow in the south, and
- Berry Hill in Droitwich.

These are all relatively deprived areas so there are probably issues with overcrowding in at least some of the households in these highlighted areas.

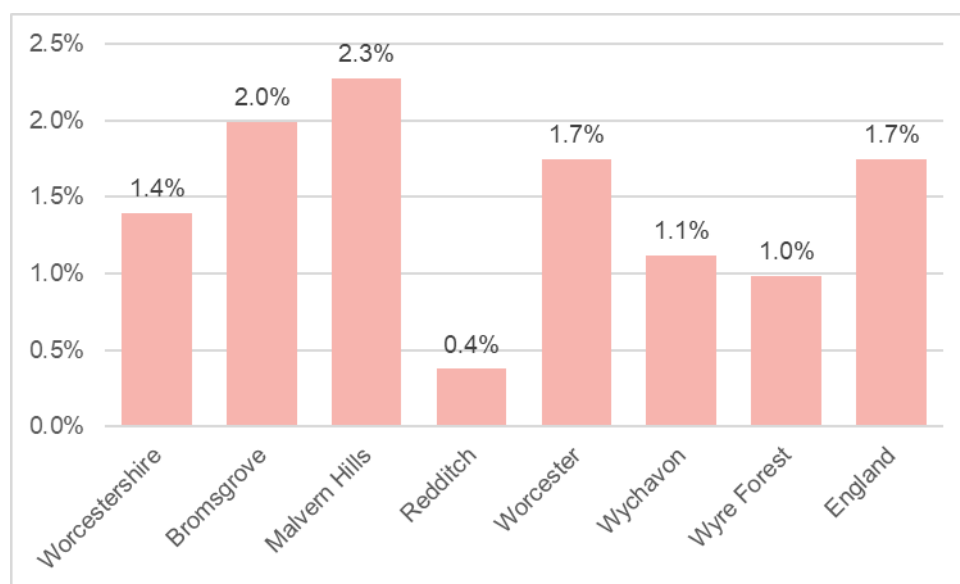
5. Demography - Number of usual residents in households and communal establishments

This dataset provides Census 2021 estimates that classify usual residents in England and Wales by whether they reside in households and communal establishments. A communal establishment is an establishment providing managed residential accommodation. 'Managed' in this context means full-time or part-time supervision of the accommodation. Types of communal establishments include hospitals, care homes, prisons, defence bases, boarding schools and student halls of residence.

Proportion of household and communal establishment residents – Worcestershire and districts

	Worcestershire	Bromsgrove	Malvern Hills	Redditch	Worcester	Wychavon	Wyre Forest	England
Lives in a household	595,271	97,206	77,675	86,708	102,059	131,014	100,609	55,504,302
Lives in a communal establishment	8,405	1,977	1,811	328	1,813	1,478	998	985,746
Total residents	603,676	99,183	79,486	87,036	103,872	132,492	101,607	56,490,048
Lives in a household	98.6%	98.0%	97.7%	99.6%	98.3%	98.9%	99.0%	98.3%
Lives in a communal establishment	1.4%	2.0%	2.3%	0.4%	1.7%	1.1%	1.0%	1.7%

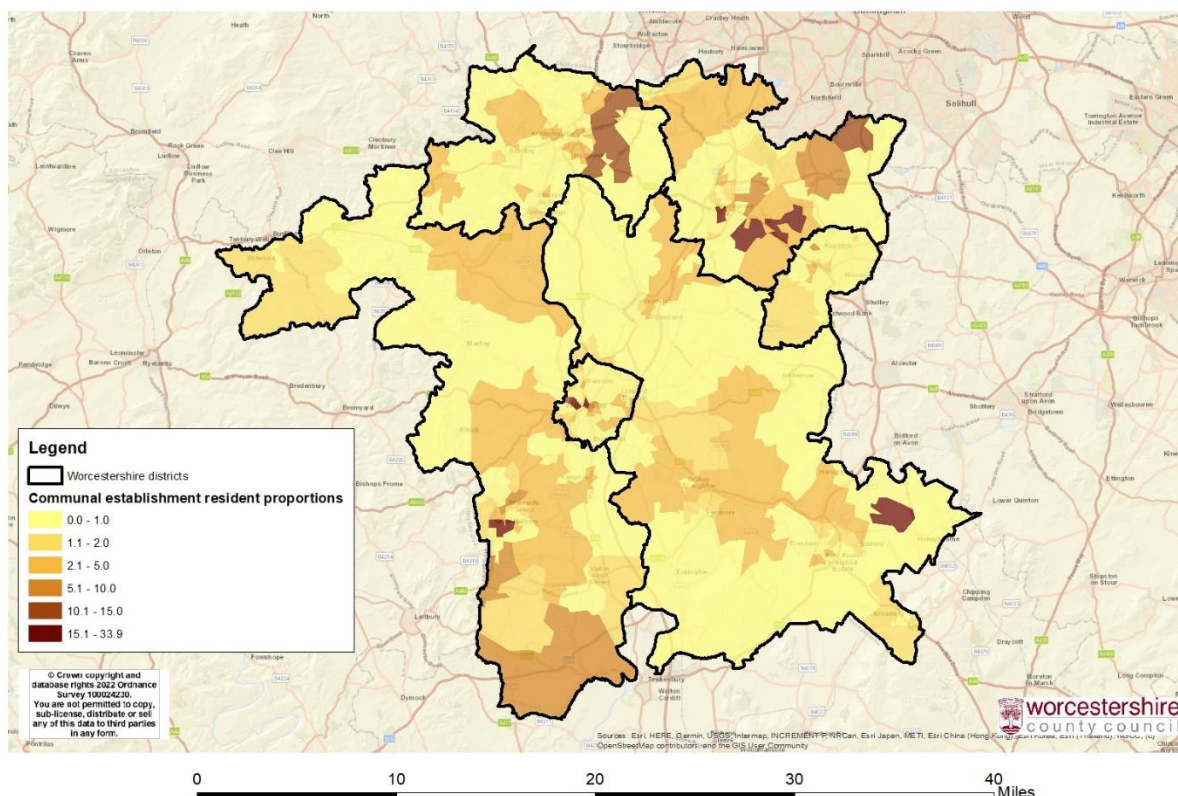
Proportion of communal establishment residents by district



- Just over 8,400 residents in Worcestershire live in communal establishments. This represents 1.4% of the population, slightly lower than the national average.
- The number of communal establishment residents in the county has fallen since 2011, by about 1,400 persons.

- Proportions living in communal establishments are particularly high in Malvern Hills at 2.3%, and Bromsgrove at 2.0%. this is most likely linked to the number of care homes located in these districts.
- Proportions of communal establishment residents are notably lower in Redditch, at just 0.4%.

Proportion of communal establishment residents by LSOA



Proportion of communal establishment residents by LSOA

MR

The map shows proportions of residents who live in communal establishments by LSOA. Some LSOA's have proportions of 15% or higher. These include: -

- The University College Campus area in Worcester City, as well as the area in the centre of the city around the bus station area and Foregate Street, which includes the University of Worcester City campus.
- Areas across Bromsgrove covering Tardebigge Hall and the St John's Middle School area. Both these areas include multiple care homes, and the Tardebigge Hall area contains HMP Hewell.
- The Priory Park and Barnard's Green area in Malvern. The area contains numerous care homes.
- The South Littleton area to the north-east of Evesham in Wychavon. The area includes HMP Long Lartin.

6. Demography – Household composition

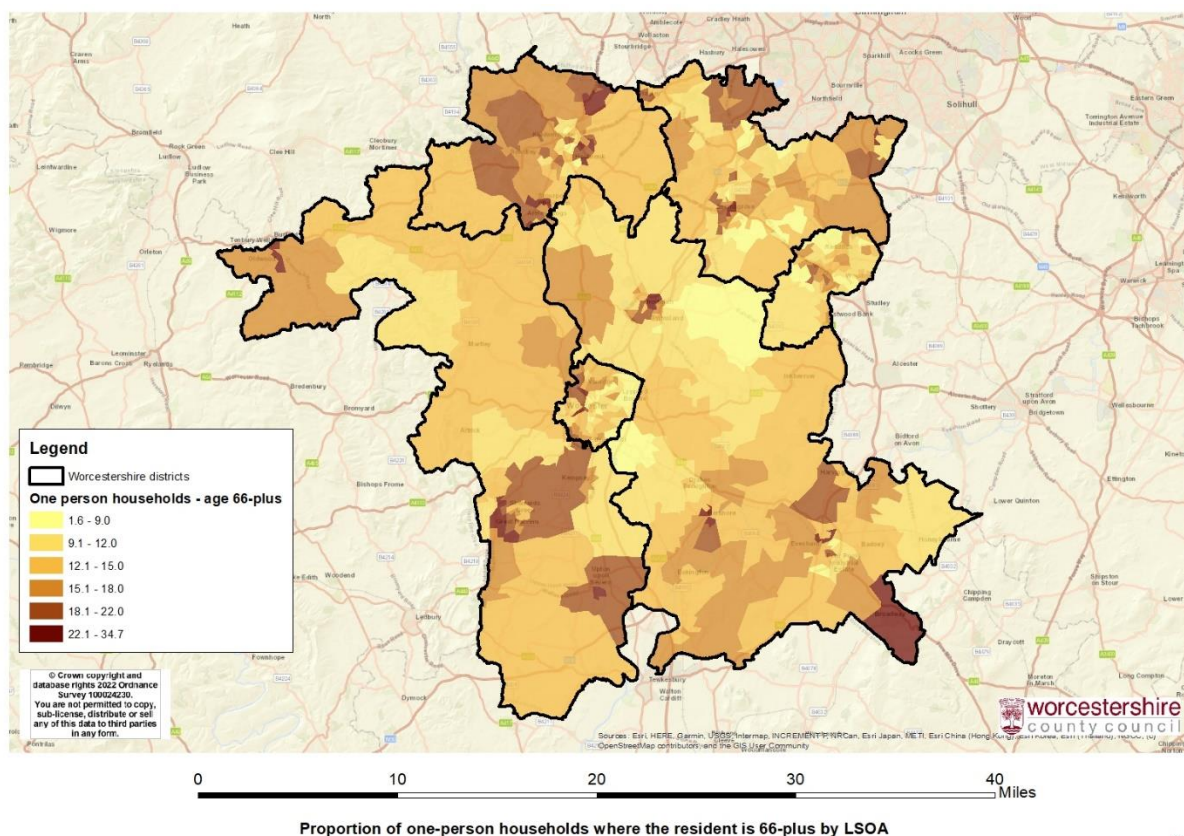
This dataset provides Census 2021 estimates that classify households in England and Wales by the relationships between household members (household composition).

Household composition – county and districts

	Worcestershire	Bromsgrove	Malvern Hills	Redditch	Worcester	Wychavon	Wyre Forest	England
Total Households	259,933	41,265	34,886	36,374	44,722	57,356	45,320	23,436,086
One person household: Aged 66 years plus	14.3%	14.4%	16.2%	12.1%	12.4%	14.5%	16.0%	12.8%
One person household: Other	15.0%	13.0%	13.4%	15.7%	19.2%	13.2%	15.7%	17.3%
Single family household: All aged 66 years plus	12.2%	12.8%	14.9%	9.5%	8.4%	14.1%	12.9%	9.2%
Single family household: Married / civil partnership couple: No children	12.0%	12.0%	13.7%	11.1%	10.4%	13.4%	11.2%	10.4%
Single family household: Married / civil partnership couple: Dependent children	13.8%	16.7%	12.7%	14.3%	13.5%	14.1%	11.3%	14.4%
Single family household: Married / civil partnership couple: All children non- dependent	6.0%	6.9%	5.9%	6.2%	5.1%	5.9%	5.8%	5.6%
Single family household: Cohabiting couple family: No children	6.5%	5.7%	5.6%	6.8%	8.0%	6.3%	6.3%	6.3%
Single family household: Cohabiting couple family: With dependent children	4.7%	4.4%	4.2%	5.7%	4.8%	4.4%	5.1%	4.5%
Single family household: Cohabiting couple family: All children non-dependent	0.8%	0.7%	0.7%	0.8%	0.8%	0.7%	0.9%	0.7%
Single family household: Lone parent family: With dependent children	5.9%	5.9%	4.7%	7.4%	6.4%	5.3%	6.1%	6.9%
Single family household: Lone parent family: All children non-dependent	3.7%	3.6%	3.4%	4.2%	3.7%	3.3%	4.1%	4.2%
Single family household: Other single family household: Other family composition	0.5%	0.3%	0.4%	0.6%	0.7%	0.4%	0.4%	0.8%
Multiple-family household: With dependent children	1.9%	1.8%	1.6%	2.5%	2.0%	1.8%	1.7%	2.7%
Multiple-family household: Other, including all full-time students and all aged 66 years plus	2.9%	2.0%	2.7%	3.2%	4.4%	2.7%	2.4%	4.2%

- It has already been stated that the proportion of one-person households in Worcestershire is just over 29%, slightly lower than the proportion nationally, at just over 30%.
- The proportion of one-persons households where the occupant is aged 66-plus is however higher in Worcestershire (over 14%) than the national average (less than 13%). This represents almost 37,100 one-person households in Worcestershire where the resident is of retirement age.
- Numbers of one-person households in Worcestershire where the occupant is of retirement age has increased since the 2011 census. A direct comparison is not available due to changes in retirement age definitions, but the number of one person households where the occupant was aged 66-plus in 2021 is almost 37,100, compared to 31,300 one person households in which the occupant is 65-plus in 2011.
- The proportions of one-person households where the occupant is aged 66 and over is particularly high in Malvern Hills and Wyre Forest, both at just over 16%. Proportions are lower in Worcester and Redditch, both at just over 12%.
- There are over 31,600 households containing one family where all occupants are aged 66 and over in Worcestershire. This represents over 12% of all households in the county, higher than the national average of just over 9%.
- Proportions of households containing families where all members are 66 and over are particularly high in Malvern Hills, at nearly 15%, and Wychavon, at over 14%. Proportions are relatively low in Worcester, at just over 8%, and Redditch, at less than 10%.
- Over 15,400 households in Worcestershire contain a one-parent family with dependent children. This represents just under 6% of all households in the county and is lower than the national average of just under 7%.
- Numbers of lone parent households with dependent children have increased by almost 900 since the 2011 census.
- Proportions of lone parent families with dependent children are relatively high in Redditch, at over 7%. Worcester and Wyre Forest have proportions just over 6%.

Proportion of one person households of retirement age at LSOA level



There are some areas in Worcestershire with notably high proportions of over 20% and in some places over 30% of one-person households where the resident is of retirement age. Areas where more than 22% of households are one-person households containing a person aged 66 or over include: -

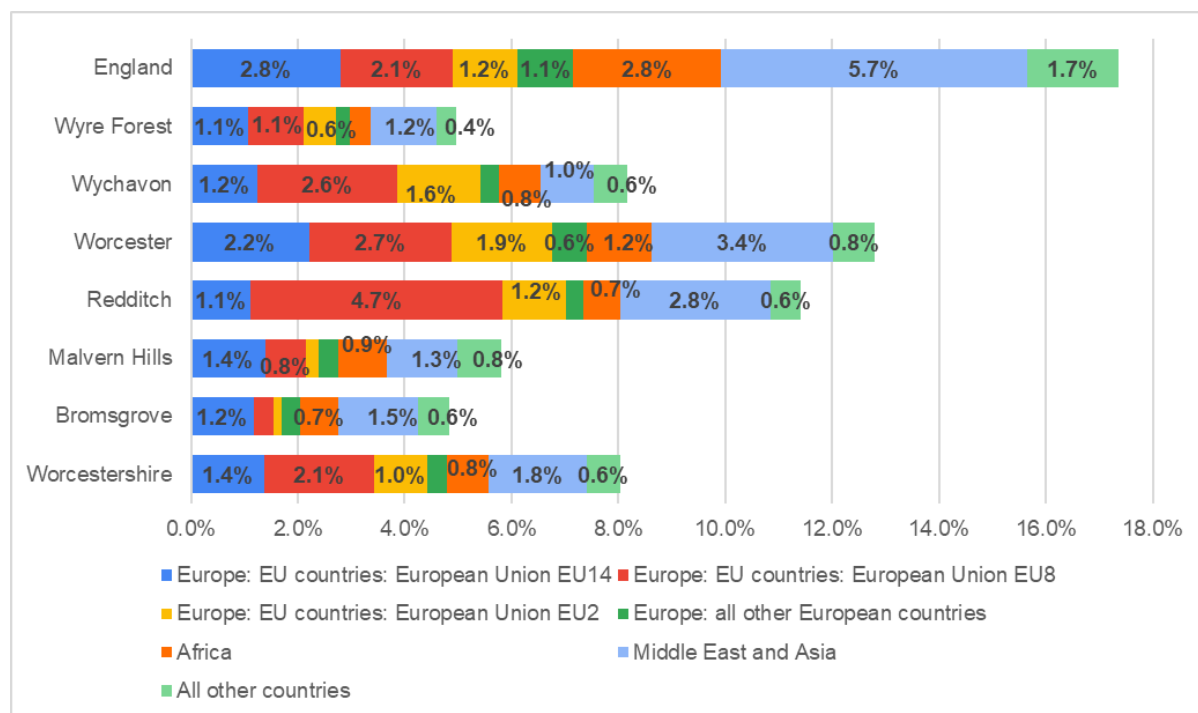
- Broadway in the south of Wychavon
- Areas in Pershore including Abbey Wood
- The area in Evesham around Swan Lane first school
- The Netherwick area in Droitwich
- Areas in the east of Malvern,
- The area of Upton-upon-Severn in Malvern Hills
- The area of Tenbury Wells in north-west Malvern Hills
- Areas in Kidderminster including Offmore, Spennells and Comberton
- Cookley in the rural part of Wyre Forest in the north-east of the district.
- The area in Stourport around Mitton Chapel Bridge, and
- The North Bromsgrove High School area.

7. Demography – Country of birth

This dataset provides Census 2021 estimates that classify usual residents in England and Wales by their country of birth.

Country of birth by county and district - broad

	Worcestershire	Bromsgrove	Malvern Hills	Redditch	Worcester	Wychavon	Wyre Forest	England
Total	603,673	99,183	79,489	87,037	103,872	132,494	101,607	56,490,049
Europe: United Kingdom	92.0%	95.2%	94.2%	88.6%	87.2%	91.8%	95.0%	82.6%
Europe: EU countries: European Union EU14	1.4%	1.2%	1.4%	1.1%	2.2%	1.2%	1.1%	2.8%
Europe: EU countries: European Union EU8	2.1%	0.4%	0.8%	4.7%	2.7%	2.6%	1.1%	2.1%
Europe: EU countries: European Union EU2	1.0%	0.1%	0.2%	1.2%	1.9%	1.6%	0.6%	1.2%
Europe: all other European countries	0.4%	0.3%	0.4%	0.3%	0.6%	0.3%	0.3%	1.1%
Africa	0.8%	0.7%	0.9%	0.7%	1.2%	0.8%	0.4%	2.8%
Middle East and Asia	1.8%	1.5%	1.3%	2.8%	3.4%	1.0%	1.2%	5.7%
All other countries	0.6%	0.6%	0.8%	0.6%	0.8%	0.6%	0.4%	1.7%



Labels of less than 0.5% have been removed from the graph for clarity of presentation.

- Around 92% of people living in Worcestershire were born in the UK. This is higher than the national average of almost 83%.
- The proportion of people born in the UK in Worcestershire is a slightly reduction on the 2011 level, of just over 94%.
- Proportions of people born in the UK are relatively low in Worcester at just over 87%, and Redditch at less than 89%. Proportions in all Worcestershire districts are higher than the national average.
- Just over 2% of people residing in Worcestershire were born in EU8 countries, which consist of Czechia, Estonia, Hungary, Latvia, Lithuania, Poland, Slovakia, and Slovenia. This is similar to the national average.
- Proportions of people born in EU8 countries are particularly high in Redditch at almost 5%. Worcester and Wychavon have relatively high proportions of residents born in EU8 countries, both at just over 2.5%.
- Almost 2% of people living in Worcestershire were born in Middle East and Asian countries. This is lower than the national average of almost 6%.
- Proportions of residents born in the Middle East and Asia are relatively high in Worcester, at 3.4%, and in Redditch, at almost 3%.
- People born in EU2 countries, consisting of Bulgaria and Romania, make up 1.0% of the population in the county. This is slightly lower than the national average.
- Almost 2% of the population in Worcester City were born in EU2 countries. Proportions are also relatively high in Wychavon at 1.6%, and Redditch at 1.2%.

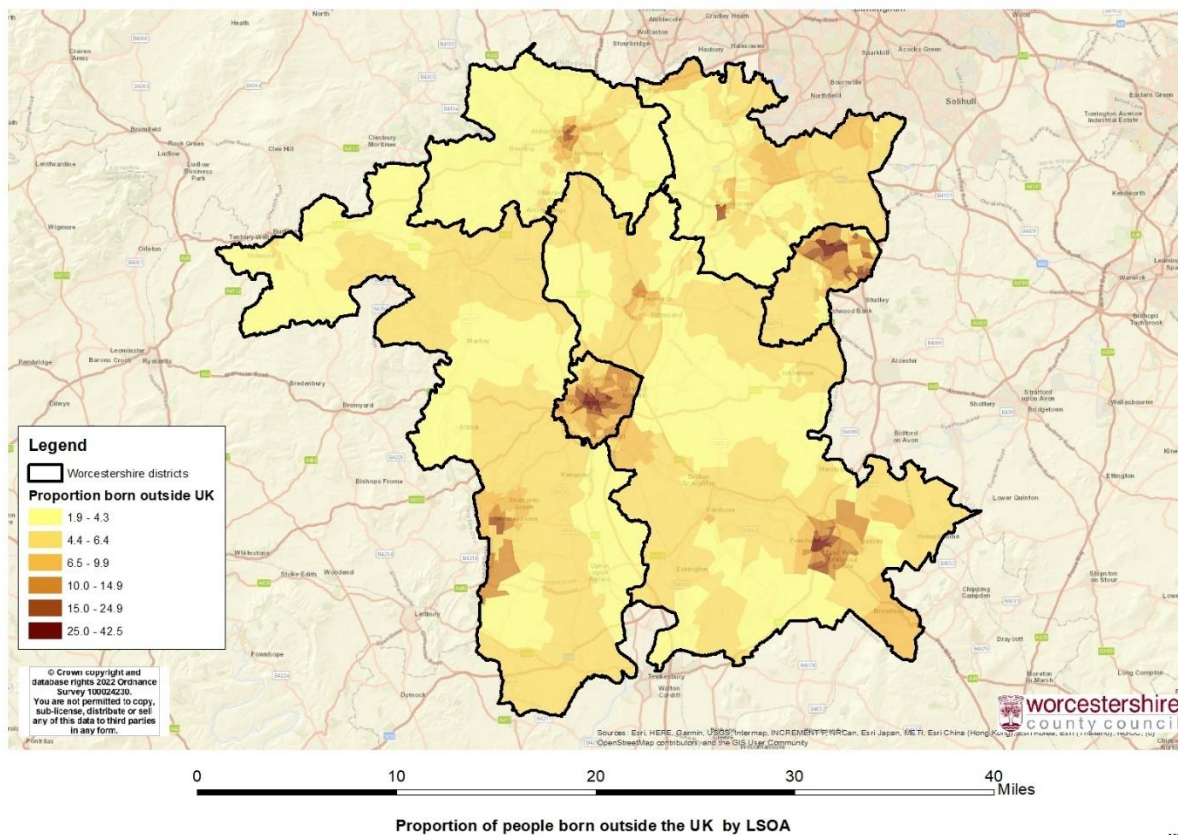
Country of birth by county and district - detailed

	Worcestershire	Bromsgrove	Malvern Hills	Redditch	Worcester City	Wychavon	Wyre Forest	England
Total	603,676	99,181	79,484	87,037	103,866	132,486	101,607	56,490,051
England	89.3%	93.0%	90.3%	86.7%	84.2%	88.8%	92.9%	80.3%
Poland	1.5%	0.2%	0.5%	3.7%	1.9%	2.0%	0.7%	1.3%
Wales	1.5%	1.2%	2.4%	0.9%	1.7%	1.7%	1.2%	0.8%
Scotland	0.9%	0.8%	1.1%	0.7%	0.9%	1.1%	0.7%	1.1%
Romania	0.8%	0.1%	0.2%	1.1%	1.6%	0.9%	0.6%	0.9%
Other Countries that joined the EU between April 2001 and March 2011	0.7%	0.2%	0.3%	1.0%	0.9%	1.2%	0.3%	1.0%
India	0.5%	0.5%	0.2%	0.7%	0.8%	0.2%	0.3%	1.6%
Pakistan	0.4%	0.1%	0.1%	1.4%	1.0%	0.0%	0.1%	1.1%
Ireland	0.4%	0.5%	0.3%	0.4%	0.3%	0.3%	0.3%	0.6%
Germany	0.3%	0.3%	0.5%	0.3%	0.4%	0.3%	0.2%	0.4%
Northern Ireland	0.3%	0.3%	0.4%	0.3%	0.3%	0.3%	0.2%	0.3%
South Africa	0.3%	0.2%	0.4%	0.2%	0.3%	0.4%	0.1%	0.4%
Portugal (incl. Madeira and the Azores)	0.2%	0.0%	0.1%	0.0%	0.7%	0.1%	0.1%	0.3%

The table shows a more detailed breakdown of individual countries of birth. Proportions for many countries are small and countries with proportions in Worcestershire or districts that are lower than 0.3% have been omitted. Proportions of more than 2% are highlighted in red, proportions of more than 1% highlighted in orange, and proportions of more than 0.5% are highlighted in yellow so higher percentages can be easily picked out.

- With the exception of those born in England, the country of birth with the highest proportion of population in Worcestershire is Poland, at 1.5%. This is slightly higher than the national averages of 1.3% and represents over 9,200 people in the county who were born in Poland.
- Proportions of people born in Poland are particularly high in Redditch, at almost 4%, and Wychavon, at 2%.
- Over 4,700 people living in Worcestershire were born in Romania, representing 0.8% of the population. This is slightly lower than the national average of 0.9%. Proportions of people who were born in Romania are relatively high in Worcester City, at 1.6%, and Redditch, at 1.1%.
- People born in India and Pakistan represent 0.5% and 0.4% of the population of Worcestershire respectively. These proportions are both notably lower than the national averages. Proportions of people born in Pakistan are relatively high in Redditch at 1.4% and Worcester City at 1.0%, whilst proportions of people born in India are relatively high in the same two districts.
- There is also a relatively high proportion of people born in Portugal in Worcester City, at 0.7%, representing almost 680 persons.

Proportion of people born outside the UK by LSOA



The map shows proportions of people born outside the UK at LSOA level. It can be seen that several small areas have proportions of people born outside the UK of a quarter or even higher. These pockets are in the main urban areas of Worcester, Redditch and Evesham. The areas are -

- The area in the centre of Worcester covering Lowesmoor, Arboretum and Wylde's Lane,
- The area in Worcester further east in south-west Gorse Hill,
- The area in north Redditch covering St Georges and the Trinity High School area, and
- The central Evesham area including Bewdley Road and Bridge Street

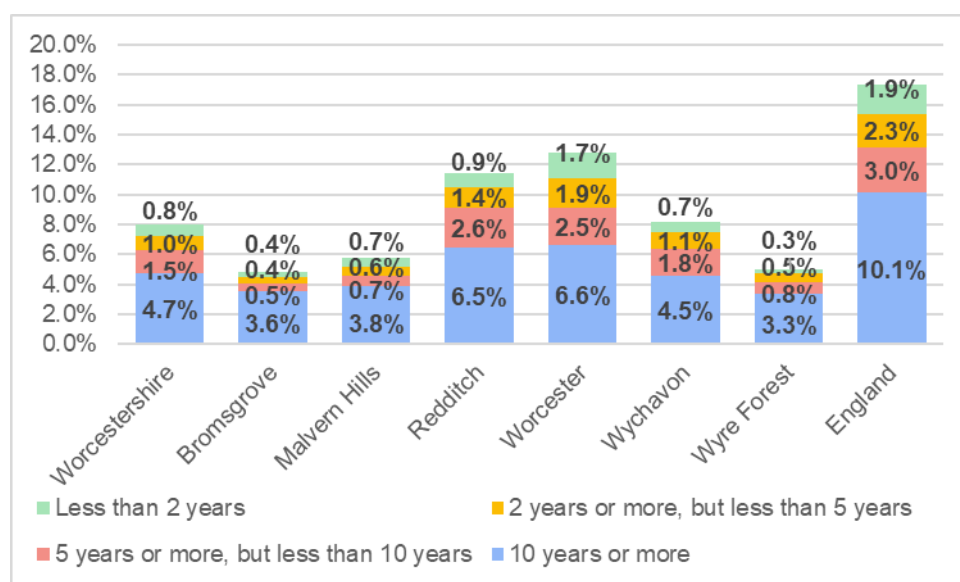
There are additional areas with proportions born outside the UK at 15% or over in the centre of Worcester, across Redditch and central Evesham as well as areas in Kidderminster, Malvern and Bromsgrove.

8. Demography – Length of residence

This dataset provides Census 2021 estimates that classify usual residents in England and Wales by their length of residence in the UK.

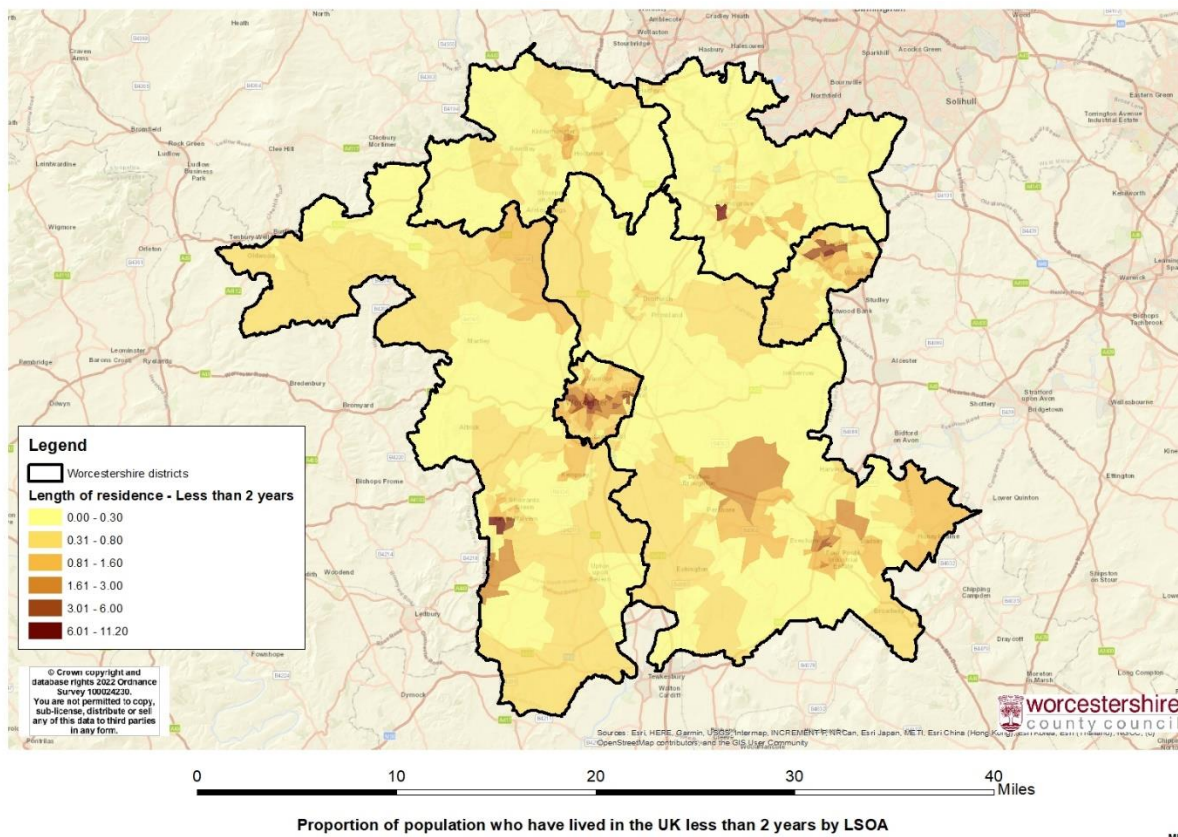
Length of residents in the UK by county and district

	Worcestershire	Bromsgrove	Malvern Hills	Redditch	Worcester	Wychavon	Wyre Forest	England
Total	603,679	99,183	79,486	87,036	103,873	132,492	101,607	56,490,048
Born in the UK	92.0%	95.2%	94.2%	88.6%	87.2%	91.8%	95.0%	82.6%
10 years or more	4.7%	3.6%	3.8%	6.5%	6.6%	4.5%	3.3%	10.1%
5 years or more, but less than 10 years	1.5%	0.5%	0.7%	2.6%	2.5%	1.8%	0.8%	3.0%
2 years or more, but less than 5 years	1.0%	0.4%	0.6%	1.4%	1.9%	1.1%	0.5%	2.3%
Less than 2 years	0.8%	0.4%	0.7%	0.9%	1.7%	0.7%	0.3%	1.9%



- As previously stated, 92% of residents in Worcestershire were born in the UK, higher than the national average of less than 83%.
- Less than 1% of people in Worcestershire have lived in the UK for less than two years. This represents over 28,500 people. The proportion of people who have lived in the UK for less than two years in Worcestershire is less than half the national average, of almost 2%.
- Proportions who have lived in the UK for two years or less in Worcestershire have increased slightly, from 0.6% in 2011 to 0.8% in 2021.
- Proportions of people who have lived in the UK for less than two years are relatively high in Worcester, at 1.7%. This will include both people and families from overseas who have settled in Worcester, as well as students from overseas accessing the University of Worcester.
- Almost 5% of people living in the county have lived in the UK for ten years or more. This represents almost 4,700 people. The proportion of people who have lived in the UK for more than ten years in Worcestershire is less than half the national average, of just over 10%.
- Proportions of people who have lived in the UK for ten years or more are relatively high in Worcester and Redditch, at almost 7% in both districts.

Length of residents in the UK by LSOA



The map shows proportions of people who have lived in the UK for less than two years at LSOA level. It can be seen that several small areas have proportions of people who have lived in the UK for less than two years of over 6%. These pockets are in the main urban areas of Worcester, Redditch, Bromsgrove, and Malvern. The areas are: -

- The central Worcester area around Lowesmoor and also including the area around the bus station and Foregate Street,
- The area around St John Middle School in Bromsgrove,
- The Smallwood area near the centre of Redditch, and
- The Priory Park area in Malvern.

9. Demography – Number of short-term UK residents

The ONS definition of a short-term resident differs from that of a short-term migrant. A 'short-term resident' (STR) is defined as anyone living in England and Wales who was born outside the UK and who intended to stay in the UK for a period of between 3 and 12 months, for any reason.

Short-term residents are not included in the usual resident population estimates. Short-term resident estimates can therefore be useful to explain differences between ONS population

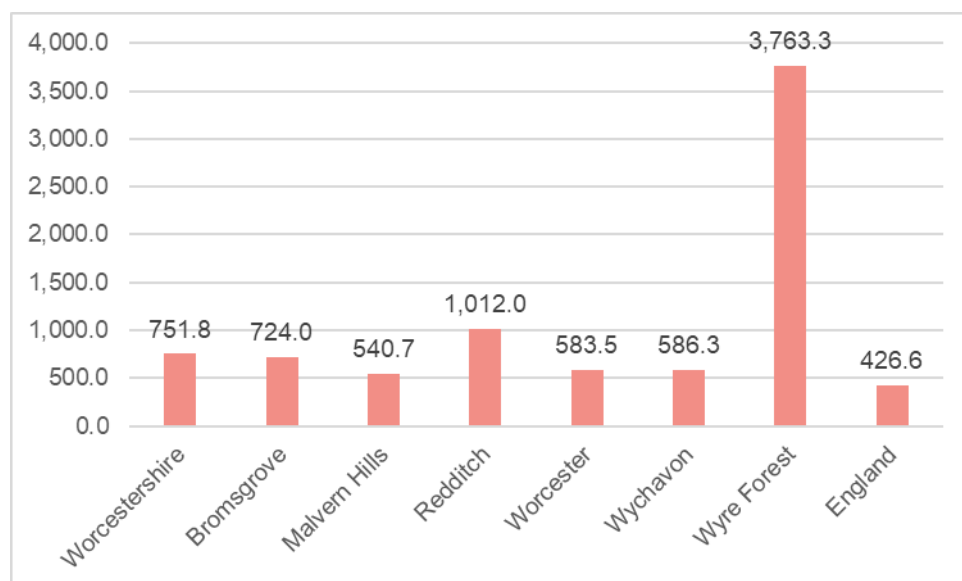
estimates, which do not include short-term migrants, and various administrative sources which include both short and long-term migrants.

Number of short-term UK residents by county and district

Sex	Worcestershire	Bromsgrove	Malvern Hills	Redditch	Worcester	Wychavon	Wyre Forest	England
Female	408	63	94	46	96	93	16	72,532
Male	395	74	53	40	82	133	11	59,879
Total	803	137	147	86	178	226	27	132,411
Proportion - females	50.8%	46.0%	63.9%	53.5%	53.9%	41.2%	59.3%	54.8%
Resident population	603,675	99,186	79,483	87,034	103,866	132,495	101,609	56,490,045
Ratio resident pop : short term residents	751.8	724.0	540.7	1,012.0	583.5	586.3	3,763.3	426.6

- Worcestershire has just over 800 short-term residents. Just under 51% of these are female, a slightly lower proportion than the national average of almost 55%.
- Proportions of short-term residents who are female are particularly large in Malvern Hills at almost 64%, and Wyre Forest at over 59%. Districts with high proportions of short-term residents who are male include Wychavon, at almost 59%.
- There were almost 700 short-term residents recorded in the 2011 Census. The number of short-term residents has risen by just over 100 between 2011 and 2021.

Ratio of usual residents to short-term UK residents by county and district

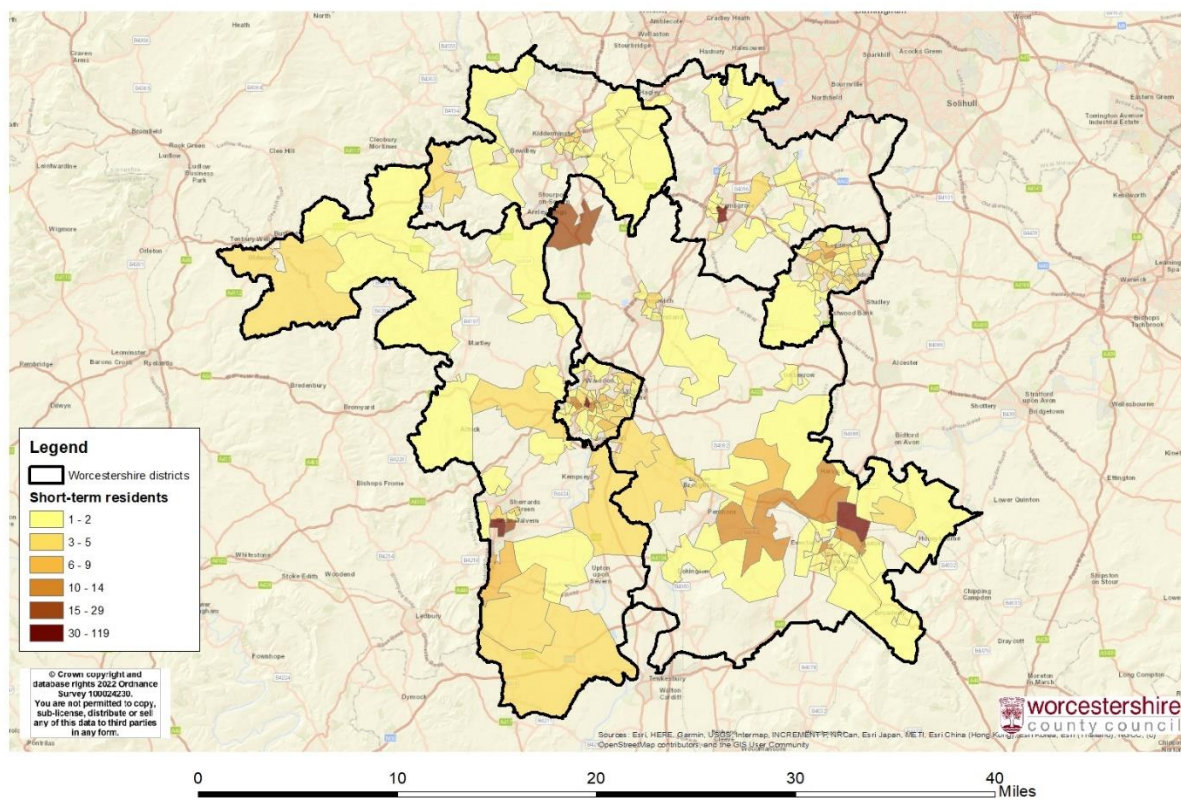


- The ratio of usual resident population to short term residents in Worcestershire is around 750, higher than the national average of just over 400. This means that Worcestershire has a

lower proportion of short-term residents compared to the total population than is seen across the whole of England.

- Proportions of total population compared to short-term residents are particularly high in Wyre Forest, at almost 3,800, and Redditch, at over 1,000. No district has a proportion lower than the national average.

Number of short-term UK residents by LSOA



The map shows numbers of short-term residents at LSOA level. It can be seen that several small areas have relatively high numbers of short-term residents, of 30 or more. These areas are: -

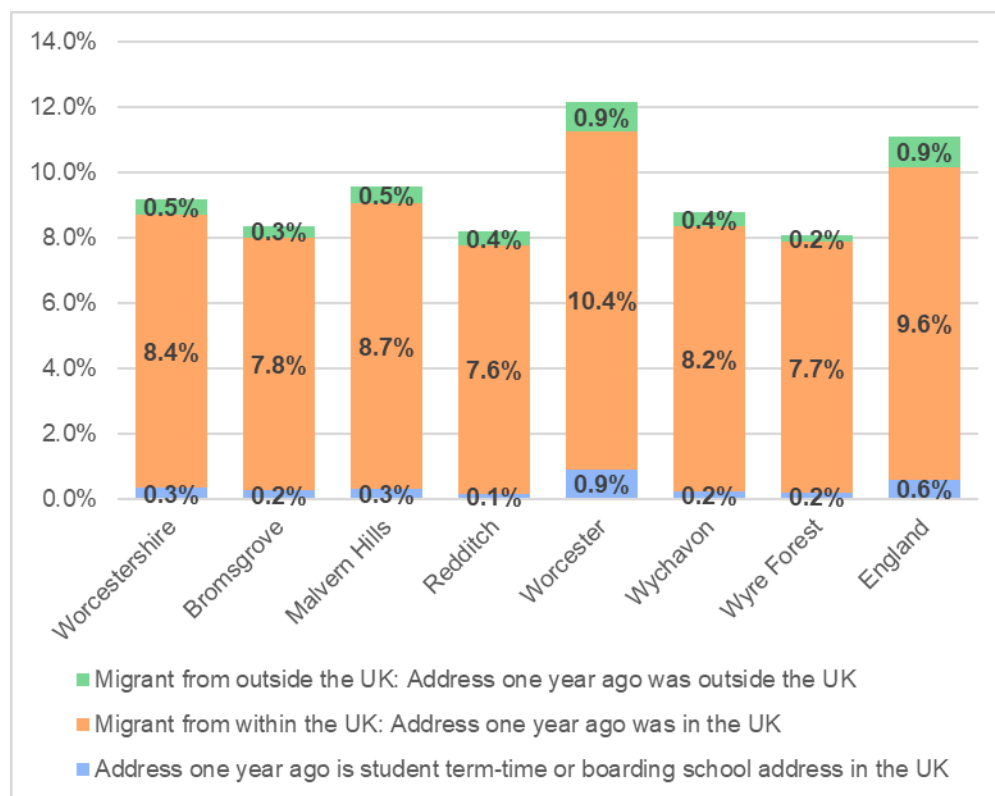
- The area around St John Middle School in Bromsgrove. This area contains almost 120 short-term residents.
- The Priory Park area in Malvern, and
- The Offenham area in Wychavon to the north-east of Evesham.

10. Address one year before the census

The census asked respondents whether their address when filling out the census form was the same as their address one year previously (that is, on 21 March 2020). These data can then be used to explore migration to England and Wales in the year before the census.

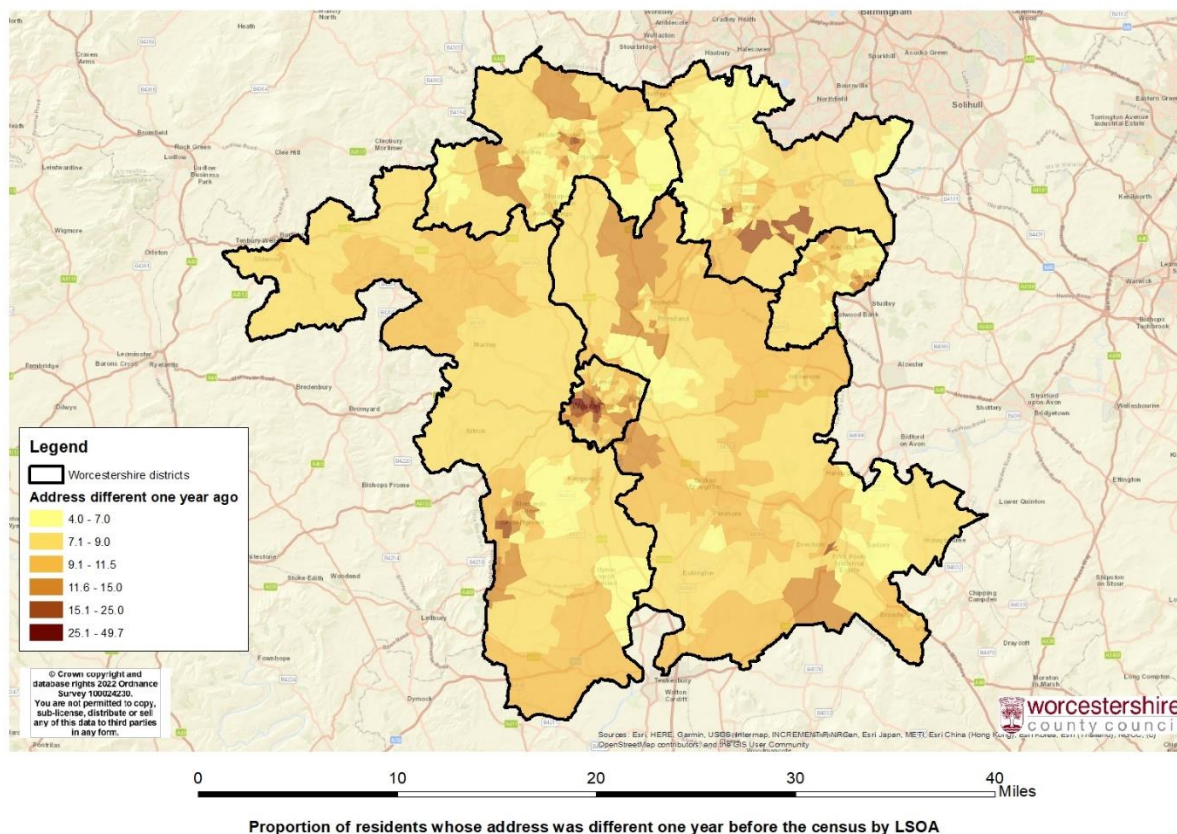
Address one year ago by county and district

	Worcestershire	Bromsgrove	Malvern Hills	Redditch	Worcester	Wychavon	Wyre Forest	England
People aged one or over	598,255	98,294	78,937	86,082	102,886	131,334	100,724	55,911,059
Address one year ago is the same as the address of enumeration	90.8%	91.6%	90.4%	91.8%	87.8%	91.2%	91.9%	88.9%
Address one year ago is student term-time or boarding school address in the UK	0.3%	0.2%	0.3%	0.1%	0.9%	0.2%	0.2%	0.6%
Migrant from within the UK: Address one year ago was in the UK	8.4%	7.8%	8.7%	7.6%	10.4%	8.2%	7.7%	9.6%
Migrant from outside the UK: Address one year ago was outside the UK	0.5%	0.3%	0.5%	0.4%	0.9%	0.4%	0.2%	0.9%



- Almost 55,000 people living in Worcestershire lived elsewhere one year before the census. This represents just over 9% of the population aged one and over and is lower than the national average of just over 11%.
- Proportions of people aged one and over who lived elsewhere one year previously are particularly high in Worcester City, at over 12%, higher than the national average.
- Worcester City has the highest proportions of people who lived elsewhere one year ago in all categories in the county. The high number of people who lived elsewhere one year ago in Worcester City is therefore a combination of students leaving term-time accommodation to return home or move into Worcester, people moving into term-time student accommodation to access Worcester University, people moving in for other reasons from other parts of the UK, and people from outside the UK moving into Worcester City, again at least some of which will be accessing the university.
- No other districts have proportions of people with different addresses one year ago higher than national averages. Malvern Hills has a relatively high proportion of people who have changed addresses in the past year, at almost 10%.

Address one year ago by LSOA



MR

The map shows proportions of residents who lived elsewhere one year before the census at LSOA level. It can be seen that several small areas have relatively high numbers of people who had changed address in the previous year, with the highest area at almost 50%.

Areas with proportions who have changed address higher than 25% include: -

- The University College Campus and Comer Gardens area in St Johns. These areas include large proportions of people who have moved to the area from other areas within the UK and relatively high movements from overseas and is likely to be linked to movements of students.
- The Lowesmoor and Worcester bus station / Foregate Street areas. This area includes the University of Worcester City campus and includes high proportions of people who have moved from other parts of the UK. The area containing Worcester City campus has the highest proportion of people who lived overseas one year ago in the county, at nearly 7%.

In addition, several areas have proportions of 15% or more who have changed address in the past year, including the Tardebigge Hall area (which includes HMP Hewell) and St John's Middle School area in Bromsgrove, the Enfield area in Redditch, Priory Park in Malvern Hills, the Aggborough area in Kidderminster town centre, Bridge Street in Evesham, and areas across Worcester City including St Johns, Pitchcroft, Britannia Square the Cathedral area and The Arboretum.

11. Households by deprivation

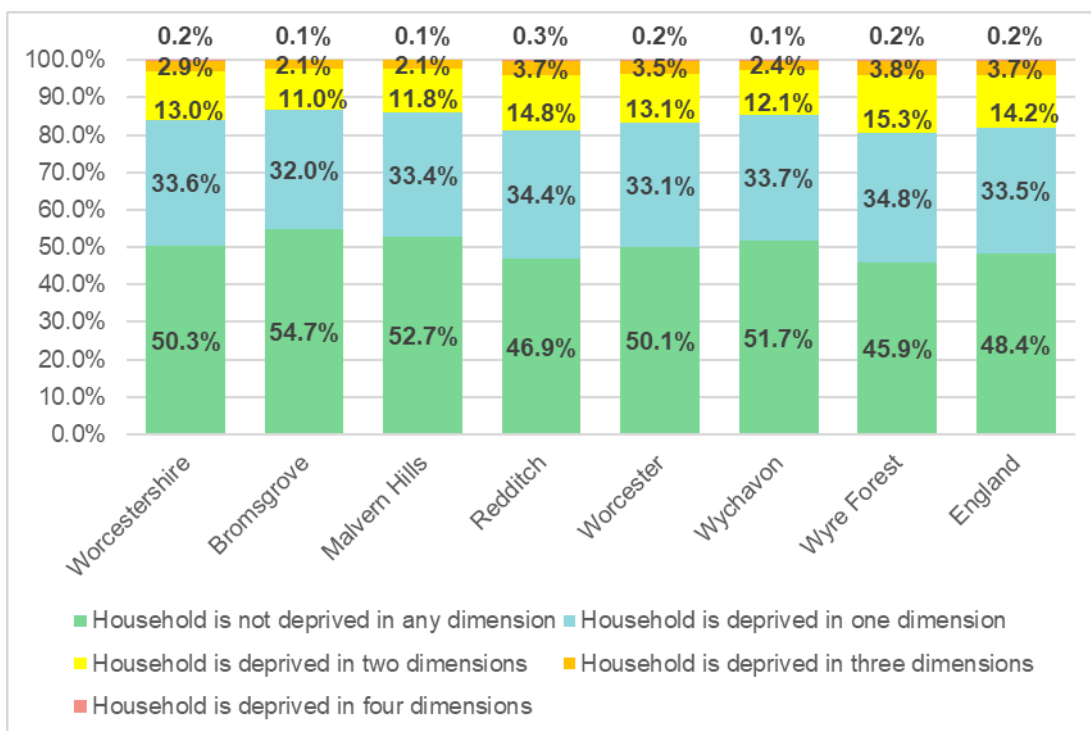
This dataset provides Census 2021 estimates that classify households in England and Wales by four dimensions of deprivation: Employment, education, health and disability, and household overcrowding.

The dimensions of deprivation used to classify households are indicators based on four selected household characteristics.

- Education - A household is classified as deprived in the education dimension if no one has at least level 2 education and no one aged 16 to 18 years is a full-time student.
- Employment - A household is classified as deprived in the employment dimension if any member, not a full-time student, is either unemployed or disabled.
- Health - A household is classified as deprived in the health dimension if any member is disabled.
- Housing - A household is classified as deprived in the housing dimension if the household's accommodation is either overcrowded, in a shared dwelling, or has no central heating.

The data does not allow us to identify which characteristics are deprived and which are not, with only the number of dimensions in which households are deprived available.

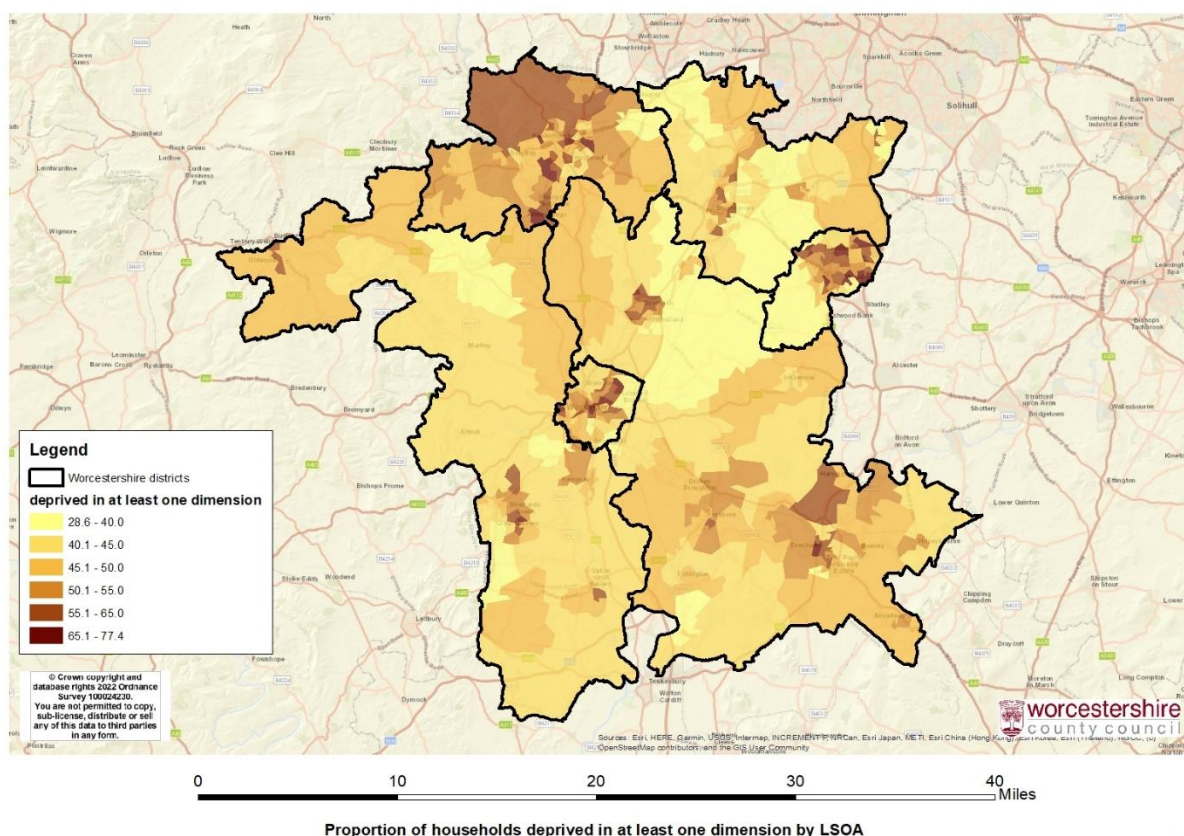
Households by dimensions of deprivation – Worcestershire and districts



- Almost a half of households in Worcestershire are classified as deprived in at least one dimension. This is slightly lower than the national average of 51.6% and represents almost 129,100 households across the county.
- Over 54% of households in Worcestershire were deprived in at least one dimension in the 2011 census. The proportion of deprived households has decreased since 2011.

- Proportions of households that are deprived in at least one dimension are particularly high in Wyre Forest, at just over 54%, and Redditch, at just over 53%. Proportions are lowest in Bromsgrove, at just over 45%.
- Just over 16% of households in Worcestershire, representing over 41,800 households, are deprived in at least two dimensions. This is lower than the national average of just over 18%. At a district level, proportions are particularly high in Wyre Forest and Redditch, each at around 19%.
- Almost 9,000 households in Worcestershire are deprived across three dimensions, representing just over 3% of all households. This is lower than the average across England of almost 4%. Proportions are relatively high in Wyre Forest, Redditch, and Worcester.
- Just under 460 households in Worcestershire are deprived across all 4 dimensions. This represents 0.2% of all households, similar to the national rate. Proportions are highest at a district level in Redditch.

Households deprived in one or more dimensions by LSOA



MR

Dimensions of deprivation are available at LSOA level. The above map shows proportions of households that have at least one dimension of deprivation. Some LSOA’s have substantially higher proportions of households with a dimension of deprivation, with the highest proportions above 65%. These areas include: -

- Areas across Worcester including in Old Warndon in the north-east of the city, in the central areas of Tolladine and Gorse Hill, and in Dines Green in the west of Worcester.
- Areas across Redditch including in Batchley in the north-west of Redditch, in Headless Cross to the south-west of Redditch, in St Georges and Abbeydale in the centre of the town, in

Moon's Moat and Winyates to the east of the town, and a relatively large area in the south of the town covering Woodrow, Washford and the St Thomas More First School area.

- Areas in Kidderminster covering some of Offmore and Comberton, areas in Kidderminster town centre around Comberton Hill, Habberley, and Birchen Coppice and the Rifle Range area.
- Areas around the Walshes and The Round House in Stourport-on-Severn,
- The Bewdley Road area in Evesham, and
- Sherrard's Green in Malvern.

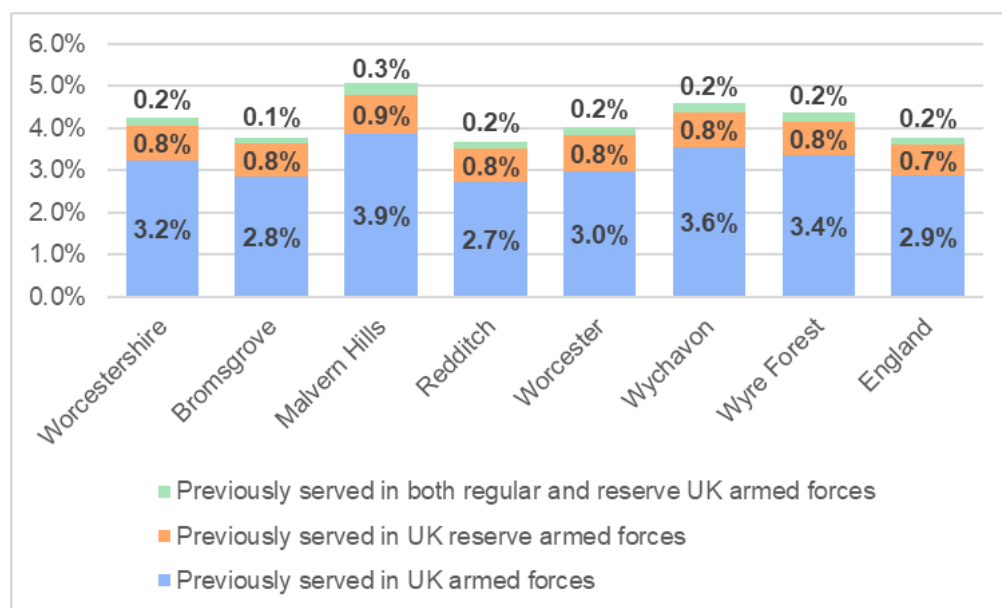
12. UK Armed Forces veteran population

The first-ever England & Wales census data on [UK Armed Forces veterans](#) was released on the 10th November. This vital information on past service in the UK Armed Forces will help service providers and others to support veterans in line with the Armed Forces Covenant.

It shows numbers of veterans for all geographical areas down to Middle Super Output Area (MSOA) level. It provides information on the number of veterans living in private households, the numbers living in communal establishments as well as the number of households with veterans. Further information on other characteristics of veterans such as health, education and employment will follow in our releases next year

Number and proportion of people who have previously served in UK armed forces – county and district

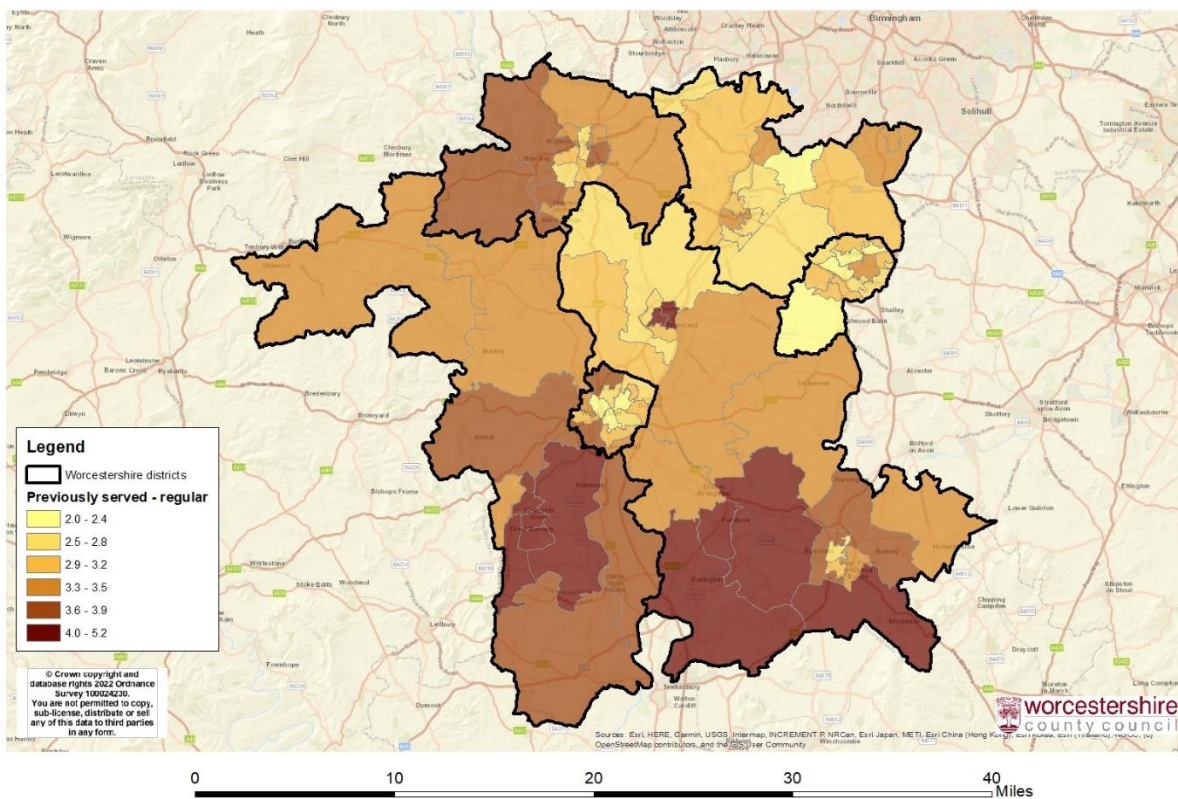
	Worcestershire	Bromsgrove	Malvern Hills	Redditch	Worcester	Wychavon	Wyre Forest	England
People aged 16-plus	499,359	81,101	67,120	70,251	85,607	110,717	84,563	46,006,957
Previously served in UK armed forces	3.2%	2.8%	3.9%	2.7%	3.0%	3.6%	3.4%	2.9%
Previously served in UK reserve armed forces	0.8%	0.8%	0.9%	0.8%	0.8%	0.8%	0.8%	0.7%
Previously served in both regular and reserve UK armed forces	0.2%	0.1%	0.3%	0.2%	0.2%	0.2%	0.2%	0.2%
Has not previously served in any UK armed forces	95.7%	96.2%	94.9%	96.3%	96.0%	95.4%	95.6%	96.2%
Previously served in either armed forces or reserve - numbers	21,262	3,066	3,408	2,592	3,431	5,078	3,687	1,737,781
Previously served in either armed forces or reserve - proportion	4.3%	3.8%	5.1%	3.7%	4.0%	4.6%	4.4%	3.8%



- There are almost 21,300 people living in Worcestershire who have previously served in either the regular or reserve armed forces. This represents 4.3% of the population aged 16-plus and is slightly higher than the national average of 3.8%.
- Proportions who have previously served in either the regular or reserve armed forces are particularly high in Malvern Hills, at just over 5%. Proportions are also relatively high in Wychavon, at almost 5%.
- Proportions are lower in Redditch and Bromsgrove, at less than 4%.
- 3.2% of people aged 16-plus have served in the regular armed forces in Worcestershire. This represents over 16,100 people and is slightly higher than the national average of 2.9%.
- Proportions of people who have served in the regular forces are again particularly high in Malvern Hills, at almost 4%.

The maps below show at smaller geographic area the areas in Worcestershire which have high proportions of armed forces veterans.

MSOA map showing proportion of people aged 16-plus who have served in the regular armed forces



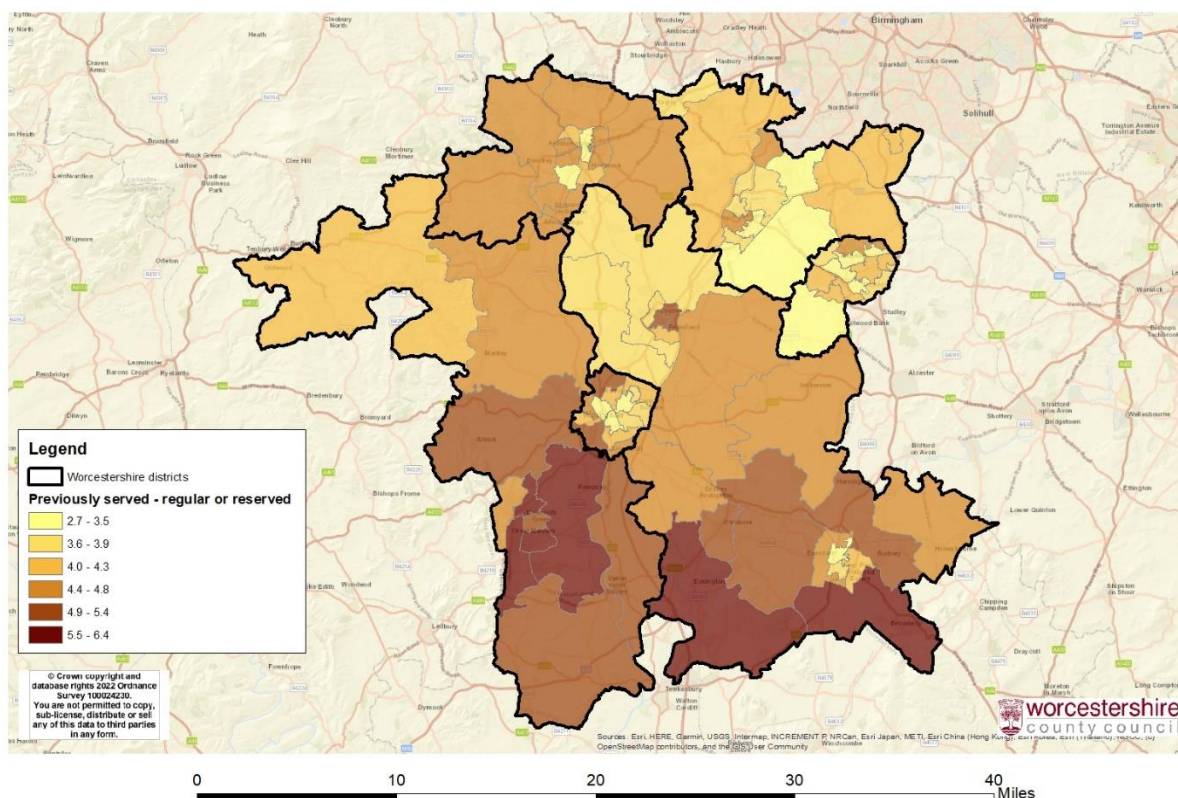
Proportion of people aged 16-plus who have served in the regular armed forces, 2021 Census, MSAO level

MR

Areas where more than 4% of the population aged 16-plus have previously served in the regular armed forces include: -

- The area covering most of central, north, and east of Droitwich,
- The area in Malvern Hills bordering Worcester to the south, including much of Malvern, Malvern Wells and Hanley Swan, and
- The mostly rural area in the south-west of Wychavon, including Pershore, Broadway, Fladbury and Eckington.

MSOA map showing proportion of people aged 16-plus who have served in the regular or reserve armed forces



MR

There are some areas in Worcestershire with notably high proportions of veterans. Areas where more than 5.5% of the population aged 16-plus have previously served in the regular or reserve armed forces include the areas in Malvern Hills around Malvern and in the south of Wychavon including Pershore that were identified previously.

13. Ethnic Group

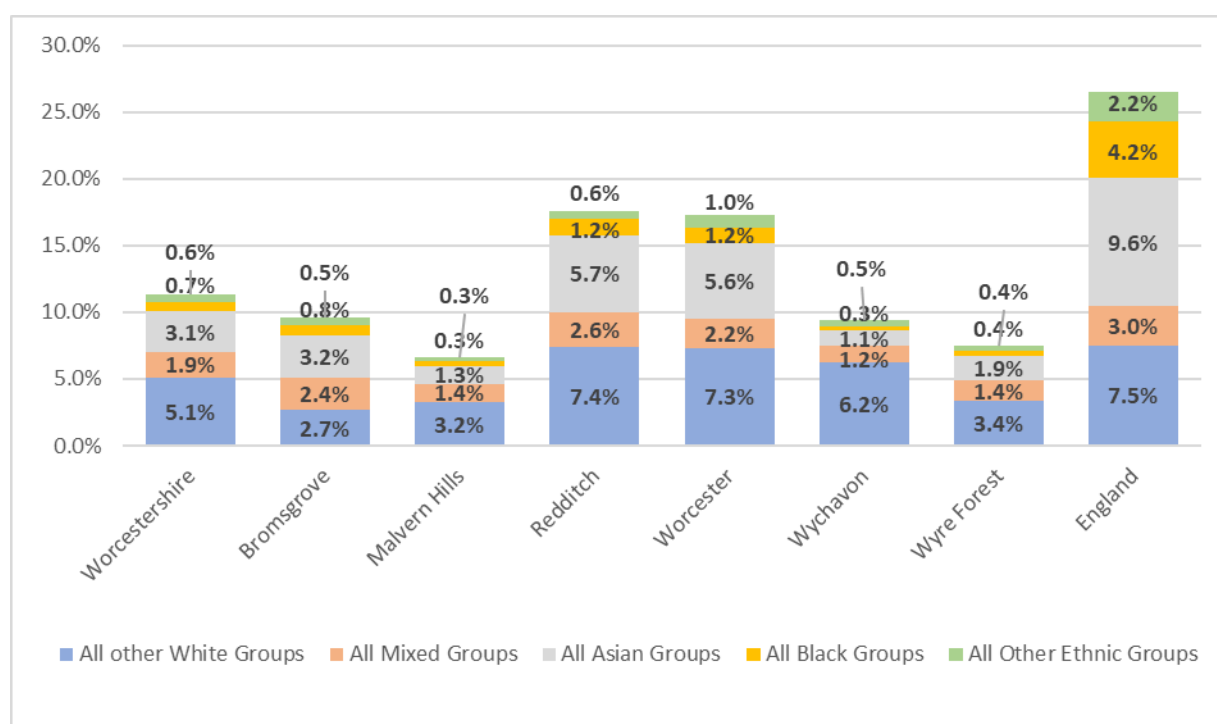
The ethnic group question has two stages. Firstly, a person identifies through one of the following five high-level ethnic groups:

- "Asian, Asian British, Asian Welsh"
- "Black, Black British, Black Welsh, Caribbean or African"
- "Mixed or Multiple"
- "White"
- "Other ethnic group"

Secondly, a person identifies through one of the 19 available response options, which include categories with write-in response options.

Broad Ethnic Group – Worcestershire and districts

	Worcestershire	Bromsgrove	Malvern Hills	Redditch	Worcester	Wychavon	Wyre Forest	England
White: English, Welsh, Scottish, Northern Irish or British	88.7%	90.4%	93.3%	82.4%	82.7%	90.6%	92.5%	73.5%
All other White Groups	5.1%	2.7%	3.2%	7.4%	7.3%	6.2%	3.4%	7.5%
All Mixed Groups	1.9%	2.4%	1.4%	2.6%	2.2%	1.2%	1.4%	3.0%
All Asian Groups	3.1%	3.2%	1.3%	5.7%	5.6%	1.1%	1.9%	9.6%
All Black Groups	0.7%	0.8%	0.3%	1.2%	1.2%	0.3%	0.4%	4.2%
All Other Ethnic Groups	0.6%	0.5%	0.3%	0.6%	1.0%	0.5%	0.4%	2.2%
All ethnic minorities	11.3%	9.6%	6.7%	17.6%	17.3%	9.4%	7.5%	26.46%



- 88.7% of people in Worcestershire are White: English, Welsh, Scottish, Northern Irish or British. This represents almost 535,500 people and compares to a proportion of 92.4% from the 2011 census.
- The number of people from ethnic minorities outside the are White: English, Welsh, Scottish, Northern Irish or British ethnicity in Worcestershire is almost 68,200. This represents 11.3% of the population and is notably lower than the national average of over 26%. The proportion of ethnic minority groups in the county in 2021 has grown from 7.6% in 2011.
- Proportions of ethnic minorities are relatively high in Redditch and Worcester, at almost 18% and just over 17% respectively. Proportions are notably lower in Malvern Hills, at less than 7%. Proportions of ethnic minorities in all districts are lower than the average across the whole of England.

- The biggest broad ethnic group in Worcestershire is the Other White group, which includes just over 5% of the population. This compares to 7.5% nationally. Proportions of Other White ethnicities are relatively large in Redditch and Worcester, both at just over 7%.
- Just over 3% of the population in Worcestershire are from Asian ethnic groups, this is lower than the national average of nearly 10%. Proportions of people who are Asian are relatively high in Redditch and Worcester, at nearly 6%.
- Almost 2% of people in the county are from a Mixed ethnic group, with proportions relatively high in Redditch and Bromsgrove. The national average for the Mixed ethnic group is 3%.
- Less than 1% of the population in Worcestershire is from a Black ethnic group, although proportions are slightly higher in Redditch and Bromsgrove.

Ethnic Group – Worcestershire and districts

	Worcestershire	Bromsgrove	Malvern Hills	Redditch	Worcester	Wychavon	Wyre Forest	England
Total	603,676	99,183	79,487	87,034	103,869	132,495	101,609	56,490,048
Asian or Asian British: Bangladeshi	0.3%	0.1%	0.1%	0.3%	0.5%	0.1%	0.7%	1.1%
Asian or Asian British: Chinese	0.3%	0.4%	0.4%	0.3%	0.4%	0.2%	0.2%	0.8%
Asian or Asian British: Indian	0.9%	1.9%	0.4%	1.2%	1.3%	0.5%	0.4%	3.3%
Asian or Asian British: Pakistani	1.1%	0.4%	0.2%	3.6%	2.5%	0.1%	0.1%	2.8%
Asian or Asian British: Other Asian	0.5%	0.4%	0.3%	0.4%	1.0%	0.3%	0.4%	1.7%
Black or Black British, Caribbean or African: African	0.3%	0.3%	0.2%	0.4%	0.8%	0.1%	0.2%	2.6%
Black or Black British, Caribbean or African: Caribbean	0.3%	0.4%	0.1%	0.6%	0.2%	0.1%	0.2%	1.1%
Black or Black British, Caribbean or African: Other Black	0.1%	0.1%	0.0%	0.2%	0.1%	0.1%	0.1%	0.5%
Mixed or Multiple ethnic groups: White and Asian	0.6%	0.8%	0.6%	0.6%	0.7%	0.4%	0.5%	0.8%
Mixed or Multiple ethnic groups: White and Black African	0.2%	0.1%	0.2%	0.1%	0.4%	0.1%	0.1%	0.4%
Mixed or Multiple ethnic groups: White and Black Caribbean	0.7%	1.0%	0.3%	1.5%	0.6%	0.4%	0.6%	0.9%
Mixed or Multiple ethnic groups: Other Mixed or Multiple ethnic groups	0.4%	0.5%	0.3%	0.4%	0.5%	0.3%	0.3%	0.8%

White: English, Welsh, Scottish, Northern Irish or British	88.7%	90.4%	93.3%	82.4%	82.7%	90.6%	92.5%	73.5%
White: Irish	0.6%	1.0%	0.5%	0.6%	0.5%	0.5%	0.5%	0.9%
White: Gypsy or Irish Traveller	0.3%	0.1%	0.2%	0.1%	0.1%	0.5%	0.4%	0.1%
White: Roma	0.1%	0.0%	0.0%	0.1%	0.1%	0.1%	0.0%	0.2%
White: Other White	4.2%	1.6%	2.5%	6.6%	6.6%	5.2%	2.4%	6.3%
Other ethnic group: Arab	0.1%	0.1%	0.1%	0.1%	0.2%	0.1%	0.1%	0.6%
Other ethnic group: Any other ethnic group	0.5%	0.4%	0.3%	0.5%	0.8%	0.4%	0.3%	1.6%

Full ethnic group data is included in the above. Percentages in Worcestershire higher than 2% are highlighted in orange, percentages higher than 1% are highlighted in yellow, and percentages higher than 0.5% are highlighted in green.

- Over 4% of the population in Worcestershire are within the Other White ethnic group. This represents almost 25,500 people in the county and contains many people from Europe including eastern Europe. Proportions in the White Other ethnicity are lower than the national average of just over 6%. Redditch and Worcester both have relatively high proportions of population who are in the White Other ethnic group, both at almost 7%, as well as in Wychavon, at over 5%.
- Just over 1% of the Worcestershire population are from the Pakistani ethnic group. This represents almost 6,600 people and is lower than the national average of almost 3%.
- Proportions of people from the Pakistani ethnic group are particularly high in Redditch, at almost 4%, and are also relatively high in Worcester, at 2.5%.
- Almost 1% of people living in the county are from the Indian ethnic group. This is notably lower than the average across England of over 3%.
- Proportions of people from an Indian ethnic group are relatively high in Bromsgrove at almost 2%.
- There are in addition 0.7% of the population in Worcestershire from the Mixed: White and Black Caribbean group, with proportions particularly high in Redditch, at 1.5%, and Bromsgrove, at 1.0%.

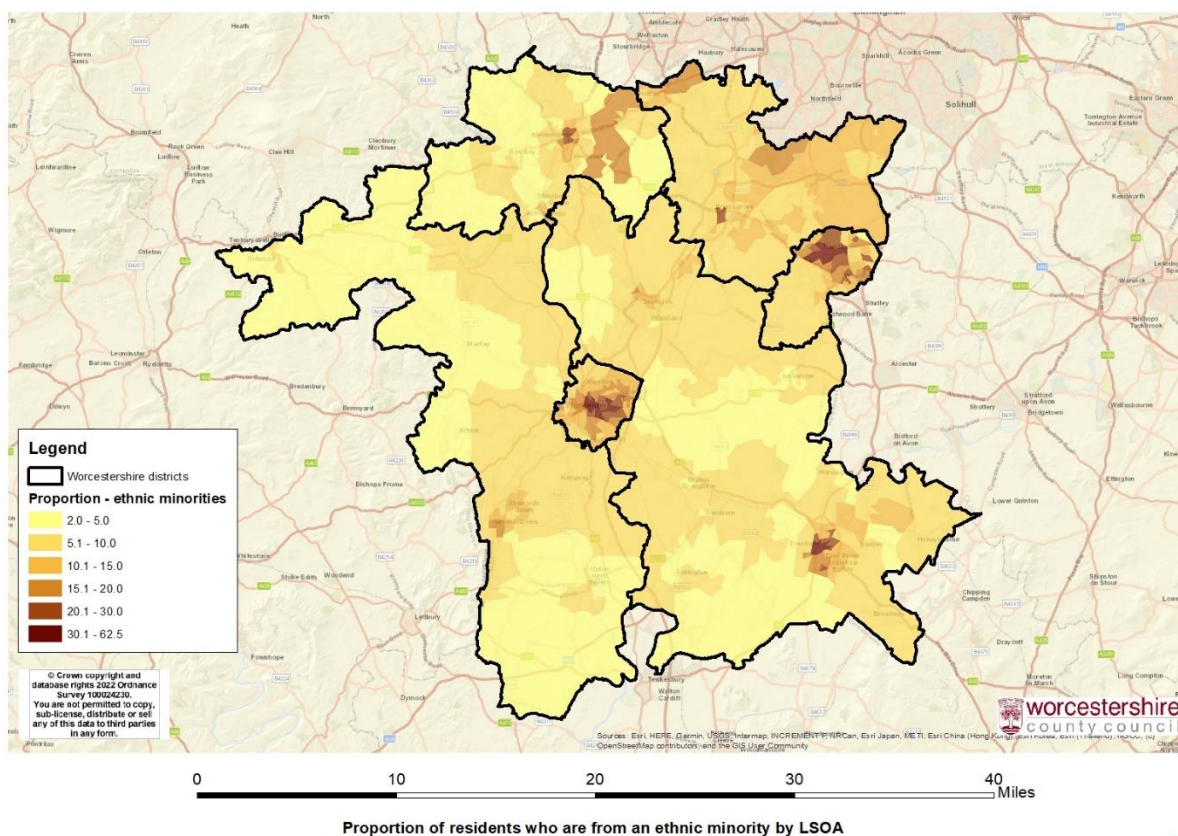
Ethnic Group (detailed) – Worcestershire and districts

Ethnic Group (detailed)	Worcestershire	Bromsgrove	Malvern Hills	Redditch	Worcester	Wychavon	Wyre Forest	England
Total	603,669	99,188	79,478	87,046	103,874	132,498	101,596	56,490,070
White: English, Welsh, Scottish, Northern Irish or British	88.70%	90.40%	93.35%	82.41%	82.65%	90.59%	92.48%	73.46%
White: Polish	1.30%	0.20%	0.46%	3.22%	1.63%	1.63%	0.62%	1.05%
Asian, Asian British or Asian Welsh: Pakistani or British Pakistani	1.09%	0.41%	0.15%	3.62%	2.48%	0.12%	0.14%	2.78%
Asian, Asian British or Asian Welsh: Indian or British Indian	0.92%	1.87%	0.38%	1.20%	1.29%	0.46%	0.43%	3.26%
Mixed or Multiple ethnic groups: White and Black Caribbean	0.72%	1.03%	0.32%	1.53%	0.60%	0.36%	0.60%	0.88%
White: European Mixed	0.69%	0.33%	0.50%	0.85%	1.05%	0.83%	0.48%	1.12%
White: Irish	0.59%	0.99%	0.49%	0.62%	0.54%	0.47%	0.47%	0.87%
Mixed or Multiple ethnic groups: White and Asian (unspecified)	0.58%	0.79%	0.59%	0.57%	0.69%	0.41%	0.46%	0.84%
White: Romanian	0.50%	0.08%	0.09%	0.71%	1.10%	0.56%	0.36%	0.60%
Asian, Asian British or Asian Welsh: Chinese	0.30%	0.41%	0.37%	0.27%	0.37%	0.17%	0.24%	0.76%
Asian, Asian British or Asian Welsh: Bangladeshi, British Bangladeshi	0.28%	0.06%	0.07%	0.26%	0.52%	0.06%	0.74%	1.11%
Black, Black British, Black Welsh or Caribbean background: Caribbean	0.26%	0.38%	0.09%	0.63%	0.23%	0.14%	0.17%	1.10%
White: Gypsy or Irish Traveller	0.24%	0.07%	0.21%	0.04%	0.09%	0.48%	0.44%	0.11%
White: Other White, White unspecified	0.22%	0.06%	0.09%	0.34%	0.39%	0.28%	0.12%	0.37%
Mixed or Multiple ethnic groups: White and Black African	0.19%	0.14%	0.20%	0.14%	0.41%	0.12%	0.11%	0.43%

At district level, ethnic group at more detailed level is available. 288 categories are available for the detailed ethnic group categories, so only those ethnic groups representing more than 1,000 population within Worcestershire are shown.

- 1.3% of the population in Worcestershire is from a White Polish ethnic group. This represents over 7,800 people and is a slightly larger proportion than the national average, of 1.05%.
- The number of White Polish people in Worcestershire has increased by almost 2,600 persons since 2011.
- Proportions of White Polish people are notably high in Redditch, at just over 3.2%. Percentages are also relatively high in Worcester and Wychavon, at 1.6%.
- The only other ethnic group with a proportion higher than 1% in Worcestershire is the Asian or Asian British: Pakistani group. Proportions in the county of this ethnic group are almost 1.1%, representing almost 6,600 persons. Proportions in the Pakistani ethnic group are notably lower in the county than the national average, of almost 2.8%.
- The number of Pakistani people in Worcestershire has increased by almost 1,600 persons since the 2011 Census.
- Proportions of people from the Pakistani ethnic group are particularly high in Redditch at over 3.6% and are also relatively high in Worcester at almost 2.5%.
- The White Romanian group has a proportion of 0.5% in Worcestershire, representing just over 3,000 persons. The proportion is slightly lower than the national average of 0.6%.
- There was no individual category for the White Romanian ethnic group in the 2011 census, but the number of “White: Other Eastern Europe” was less than 1,300.
- Proportions in the White Romanian ethnic group are notably high in Worcester, at 1.1%, and Redditch, at just over 0.7%.
- The proportion of people in Worcestershire from the White: Gypsy or Irish Traveller group is 0.24%, higher than the national proportion of just over 0.1%. There are over 1,400 people from the White: Gypsy or Irish Traveller group living in the county.
- The number of White: Gypsy or Irish Traveller people in Worcestershire has increased by almost 300 since the 2011 census.
- Proportions of people from the White: Gypsy or Irish Traveller group are particularly high in Wychavon, at almost 0.5%, and Wyre Forest, at over 0.4%.

Ethnic Minorities proportions by LSOA



Data by ethnic group is available at LSOA level. Proportions of people who are not from a White: English, Welsh, Scottish, Northern Irish or British ethnic group are presented, and it can be seen that there are some small areas with proportions of 30% and higher from ethnic minorities. These areas include: -

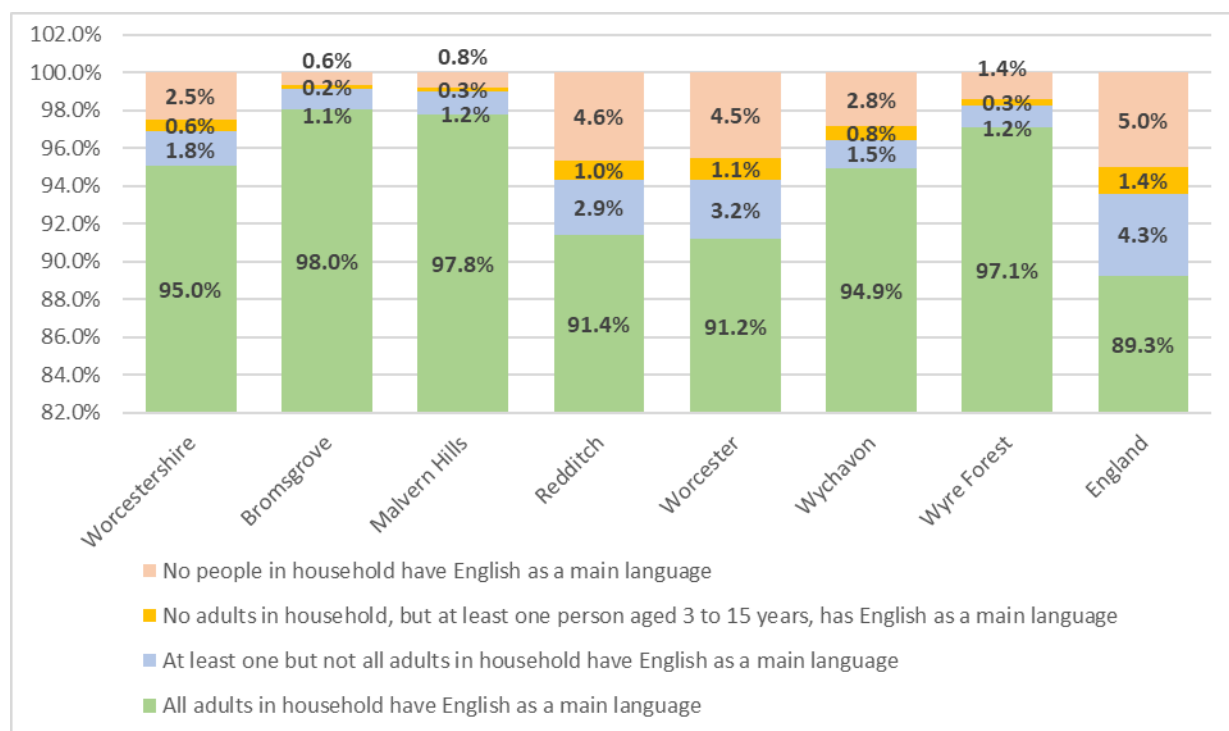
- The central areas of Worcester City including the Arboretum, Ronkswood, Wylde’s Lane, Lowesmoor and Gorse Hill,
- Areas in Redditch, including the Trinity High School area, St Georges, Mayfields Park and Smallwood, and
- The Bewdley Road and Bridge Street areas of Evesham.

14. Language

This section includes estimates that classify households in England and Wales by the combination of adults and children within a household that have English as a main language. Also included is English language proficiency among people who do not speak English as their main language, and detailed data on the main languages spoken at local authority level.

Number of people in households with English as a main language – Worcestershire and districts

	Worcestershire	Bromsgrove	Malvern Hills	Redditch	Worcester	Wychavon	Wyre Forest	England
Total	259,932	41,265	34,892	36,378	44,722	57,356	45,320	23,436,085
All adults in household have English as a main language	95.0%	98.0%	97.8%	91.4%	91.2%	94.9%	97.1%	89.3%
At least one but not all adults in household have English as a main language	1.8%	1.1%	1.2%	2.9%	3.2%	1.5%	1.2%	4.3%
No adults in household, but at least one person aged 3 to 15 years, has English as a main language	0.6%	0.2%	0.3%	1.0%	1.1%	0.8%	0.3%	1.4%
No people in household have English as a main language	2.5%	0.6%	0.8%	4.6%	4.5%	2.8%	1.4%	5.0%

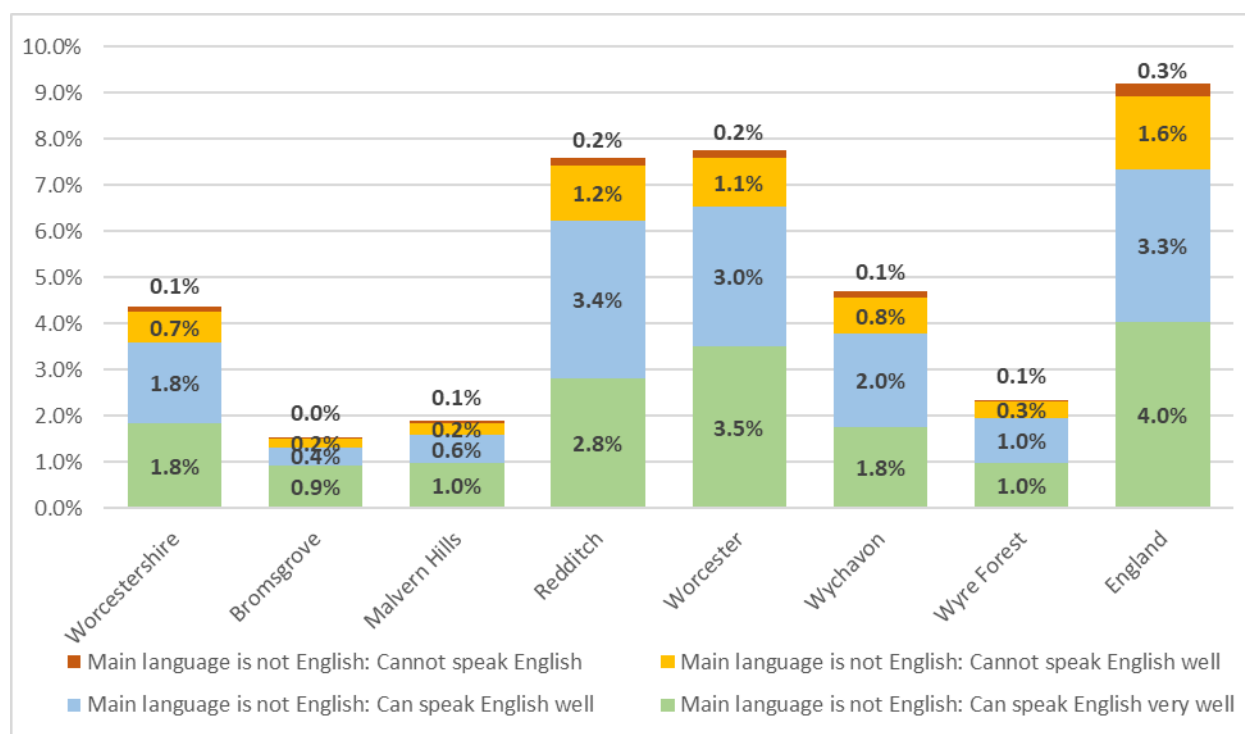


- 95% of households in Worcestershire have English as a main language among all adults in the household. This is higher than the national average of just over 89%.
- Proportions of households in which all adults have English as a main language are particularly high in Bromsgrove and Malvern Hills, at around 98%, but are lower in Worcester and Redditch, at just over 91%.
- 2.5% of households in Worcestershire contain no people in the household who have English as a main language. This represents almost 6,500 households in the county, an increase of 2,500 households since the 2011 census.

- Proportions of households where no people have English as a main language are lower than the national average of 5.0%.
- Proportions of households which contain no people who have English as a main language are particularly high in Redditch at 4.6% and Worcester at 4.5%. No district in Worcestershire has proportions as high as the proportions across the whole of England.

Proficiency in English – Worcestershire and districts

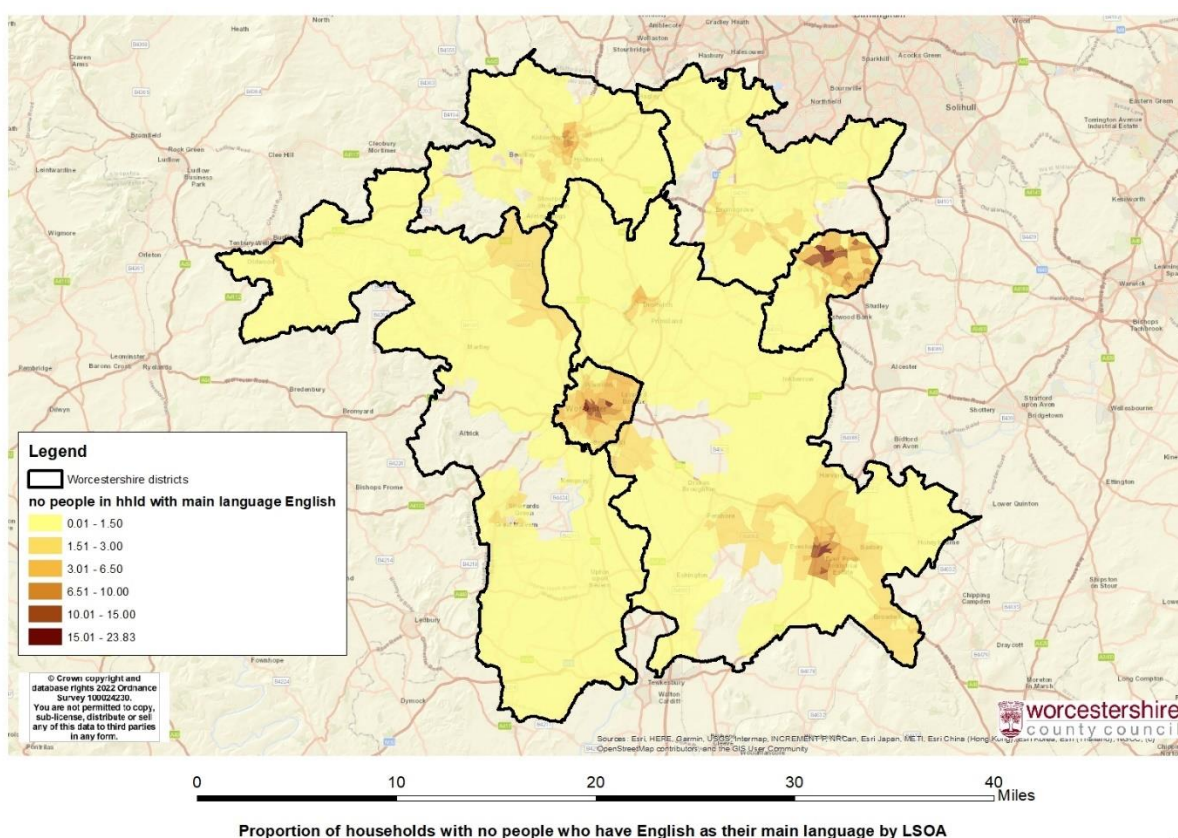
	Worcestershire	Bromsgrove	Malvern Hills	Redditch	Worcester	Wychavon	Wyre Forest	England
Total	586,538	96,248	77,730	84,112	100,690	128,895	98,863	54,686,091
Main language is English	95.6%	98.5%	98.1%	92.4%	92.2%	95.3%	97.6%	90.8%
Main language is not English: Can speak English very well	1.8%	0.9%	1.0%	2.8%	3.5%	1.8%	1.0%	4.0%
Main language is not English: Can speak English well	1.8%	0.4%	0.6%	3.4%	3.0%	2.0%	1.0%	3.3%
Main language is not English: Cannot speak English well	0.7%	0.2%	0.2%	1.2%	1.1%	0.8%	0.3%	1.6%
Main language is not English: Cannot speak English	0.1%	0.0%	0.1%	0.2%	0.2%	0.1%	0.1%	0.3%



People who did not have English as a main language were asked how well they could speak English.

- Over 4,400 people in Worcestershire reported that they either did not speak English well or could not speak English at all. This represents a proportion of 0.8% and is lower than the national average of 1.9%.
- Numbers of people in the county who cannot speak English well or at all have increased by around 1,100 from the last census in 2011.
- Proportions that cannot speak English well or at all are relatively high in Redditch at 1.4%, and Worcester at 1.2%.
- Just over 600 people (0.1% of the speaking population) in Worcestershire reported that they could not speak English at all. This is lower than the proportion across the whole of England, of 0.3%.
- The number of people who cannot speak English at all has increased from just under 500 in 2011 to just over 600 in 2021.
- Proportions who cannot speak English at all are slightly higher in Redditch and Worcester.

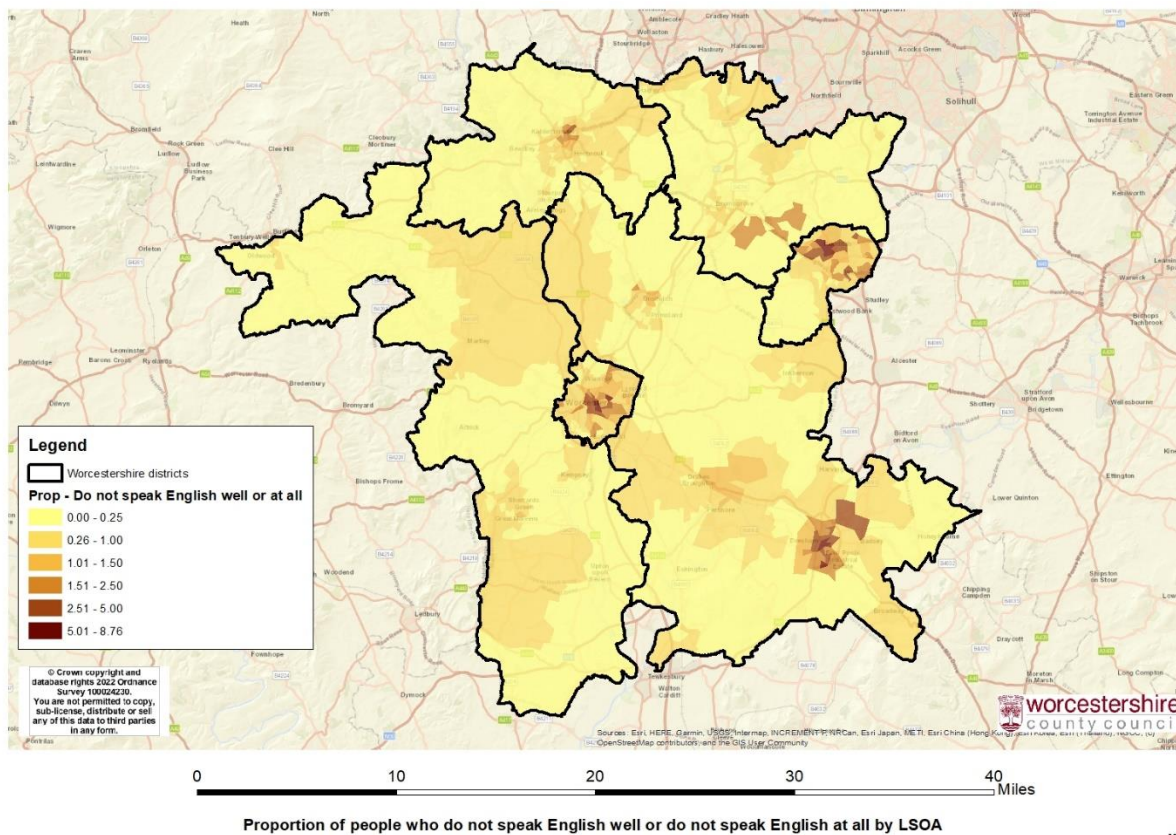
Proportion of households with no person who has English as a main language by LSOA



Proportions of households in which no people have English as a main language by LSOA are presented. It can be seen that there are some small areas with proportions of households standing at 15% and higher. These areas include: -

- South-west Gorse Hill and the Foregate Street area in Worcester,
- Smallwood and the Trinity High School area in Redditch, and
- The Bridge Street area of Abbey Park in Evesham.

Proportion of people who do not speak English well or at all by LSOA



Proportions of people who cannot speak English well or at all by LSOA are presented. It can be seen that there are some small areas with proportions of people who cannot speak English well or at all standing at 5% and higher. These areas include: -

- South-west Gorse Hill and the Wylde's Lane area in Worcester,
- Smallwood and the Trinity High School area in Redditch, and
- The Bridge Street area of Abbey Park and Charity Crescent areas in Evesham.

15. Religion

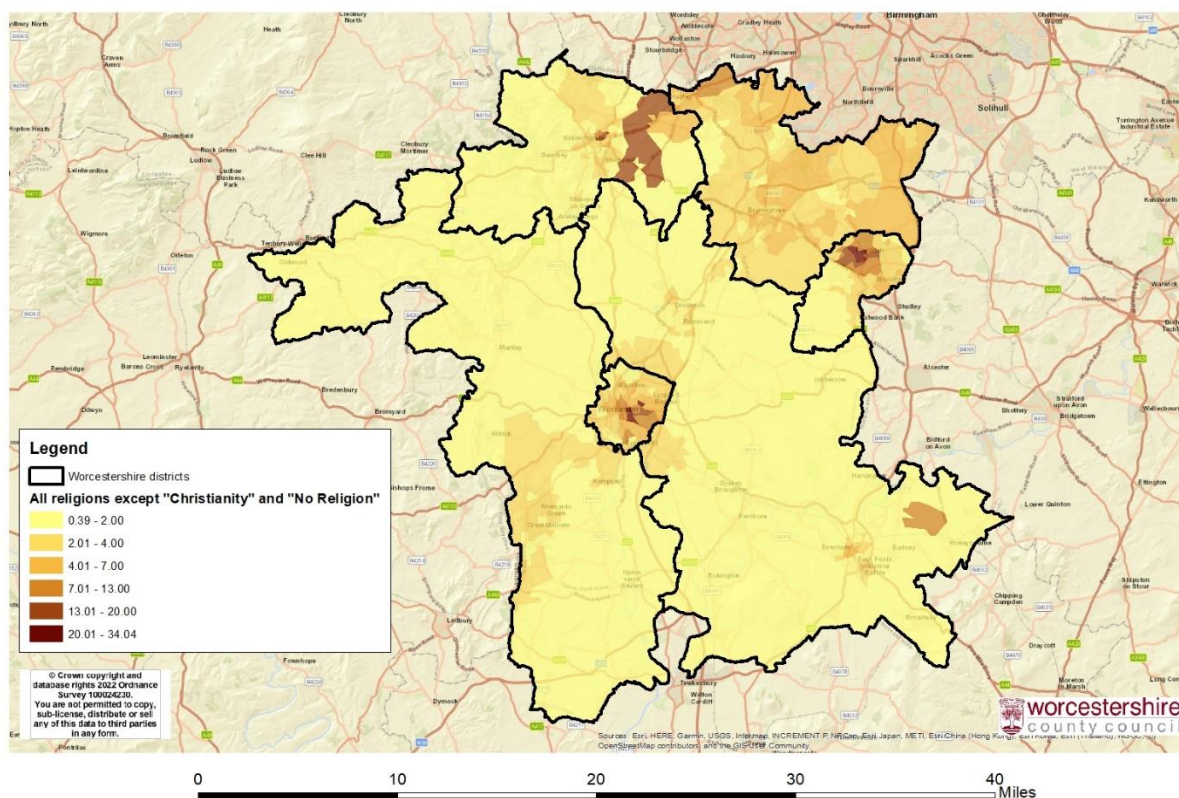
This dataset provides Census 2021 estimates that classify usual residents in England and Wales by religion. It is noted that the religion question in the census is voluntary, and almost 35,000 people in Worcestershire did not answer the question. Proportions are given as a percentage of those that did answer the question.

Religion – Worcestershire and districts

	Worcestershire	Bromsgrove	Malvern Hills	Redditch	Worcester	Wychavon	Wyre Forest	England
No religion	40.3%	39.7%	40.7%	42.4%	42.1%	37.1%	41.1%	39.0%
Christian	56.2%	56.7%	57.5%	51.7%	52.0%	61.1%	56.7%	49.3%
Buddhist	0.3%	0.3%	0.4%	0.2%	0.4%	0.3%	0.2%	0.5%
Hindu	0.3%	0.7%	0.2%	0.4%	0.4%	0.2%	0.1%	1.9%
Jewish	0.1%	0.1%	0.1%	0.1%	0.1%	0.1%	0.0%	0.5%
Muslim	1.9%	0.9%	0.5%	4.4%	4.3%	0.6%	1.1%	7.2%
Sikh	0.4%	1.2%	0.1%	0.4%	0.2%	0.3%	0.3%	1.0%
Other religion	0.5%	0.4%	0.5%	0.5%	0.5%	0.4%	0.5%	0.6%

- Just over 56% of people in Worcestershire identify as Christian, representing almost 319,900 people. This is slightly lower than the national average of just over 49%.
- Proportions of people who are Christian are lower in Redditch and Worcester than other Worcestershire districts, at around 52%.
- Just over 40% of people in Worcestershire have no religion, slightly higher than the national average of 39%.
- Proportions of people with religions other than “Christianity” and “No religion” in the county stand at 3.5%, representing over 19,800 people. This is lower than the national average of almost 12% and represents an increase of over 6,100 people since the 2011 census.
- The highest proportions among other religions in Worcestershire is in the Muslim religion. There are almost 10,900 people in Worcestershire who identify as being Muslim, representing 1.9% of the population in the county. This is notably lower than the average across the whole of England, of 7.2%.
- The number of Muslims in Worcestershire has increased by about 3,400 since 2011.
- Over 4% of the populations in Redditch and Worcester are Muslim.
- No other religion in Worcestershire has a proportion above 0.5%.
- In Bromsgrove, 1.2% of the population identify as Sikh. This represents almost 1,200 people in Bromsgrove.

Proportion of people whose religion is not “Christianity” or “No religion” by LSOA



Proportion of people whose religion is not “Christianity” or “No religion” by LSOA

MR

Religion by LSOA is available and Proportions of people whose religion is not Christianity or No religion by LSOA are presented. it can be seen that there are some small areas with proportions of people whose religion is not Christianity or no religion at 20% and higher. These areas include: -

- South-west Gorse Hill and the Wylde’s Lane area in Worcester, and
- Smallwood and the Trinity High School area in Redditch.