

# 2021 Census – Analysis of Initial (phase 1) Release

Information Lead: Matt Fung

Version: 1

Prepared By: Mike Rice

Date: 07/03/2023

## Table of Contents

1. Summary.....	2
2. Purpose.....	4
3. Background.....	4
4. Total Population and Population Change.....	4
5. Population by age group .....	7
6. Households .....	13

## 1. Summary

- The 2021 Census saw 97% of households across England and Wales taking part. Almost 90% of household responses to Census 2021 in England and Wales were completed online, with an online electronic questionnaire available for the first time.
- New household and population figures will impact on county council planning in terms of infrastructure, schools and transport, as well as district core strategies, GP surgeries, and hospital beds.
- Total population in Worcestershire has increased by 37,400 since 2011. The population in Worcestershire is 1.07% of the total population in England. This is the same as in 2011.
- The 65-plus population has grown by 29,000 since 2011, a rise of almost 27%. This is higher than the national rise of just over 20% and is likely to impact on services for older people.
- Further, the 75-plus population has increased by over 14,400 (29%) since 2011.
- The number of people aged 0-19 in Worcestershire has increased by 1,300 (1.0%) since 2011, although the 0-4 age group has decreased by 1,400 persons (almost 5%). This will impact on numbers of children in Worcestershire schools and future school places.
- Population per household has decreased in the county since 2011, a pattern that is not replicated in the regional or national figures. This is most likely due to the older age structure in Worcestershire as well as life changes among younger age groups, with more one-person households forming, and has an impact on planning and housing strategies.
- Worcestershire's Census 2021 population is now 603,600 compared to 566,200 in 2011. The population in the county has increased by 37,400 since 2011.
- The population in Worcestershire is 1.07% of the total population in England, the same as in 2011.
- Worcestershire's population has increased by 6.6% in the last 10 years. This compares to increases of 6.6% nationally and 6.2% regionally.
- Wychavon has seen the largest percentage increase in its population (>13% increase). Redditch and Wyre Forest have increased by the smallest amounts, both with increases of less than 4%.

### Headline findings - Population

- Worcestershire continues to have an older population structure than England:
  - The number of people aged 65-plus in Worcestershire is 138,000, almost 23% of all people living in the county. Proportions of people aged 65-plus are particularly high in Malvern Hills (around 28%) and in Wychavon and Wyre Forest, both at around 25%.
  - The number of people aged 65-plus in Worcestershire has increased by almost 29,000 since 2011, a rise of almost 27%. This compares to a rise of just over 20% nationally.

- Increases in the 65-plus age group are particularly high in Redditch (over 36%) and Wychavon (almost 32%).
- The 75-plus population has increased by over 14,400 persons (almost 29%) since 2011.
- Worcestershire’s younger population has not grown at the same rate as the general population:
  - The 0-19 population has increased by about 1,300 persons (1.0%) since 2011, although the 0-4 population has decreased by almost 5% (around 1,500 persons).
  - Other age groups to see a notable growth in the 10-year period include the 5-14, 25-34, and most notably the 50-59 age group. Age groups that have decreased include the 15-24, 40-49 and 60-64 age groups.

### Headline findings – Households

- The 2021 Census estimates that there are 259,900 households with at least one resident in Worcestershire, compared to 239,700 in 2011 (additional 20,200 households).
- The number of households in Worcestershire has increased by around 8.4% since 2011. This is higher than the national average of 6.2%, and higher than the regional average of 5.9%.
- Over this time period Wychavon has seen the largest increase in number of occupied households (16%) whilst the lowest increases were seen in Redditch (less than 5%) and Wyre Forest (just over 5%). The notably large increase in households in Wychavon is consistent with the large population increase.

## 2. Purpose

This paper provides a summary of the initial Census 2021 population and household figures, published on Tuesday 28th June 2022 by the Office for National Statistics.

## 3. Background

The 2021 Census took place on 21st March 2021 and the Office for National Statistics released the first stage of data on 28th June 2022. It is the most accurate set of information available on the population of England and Wales and is used by Central Government to allocate funding to Local Authorities.

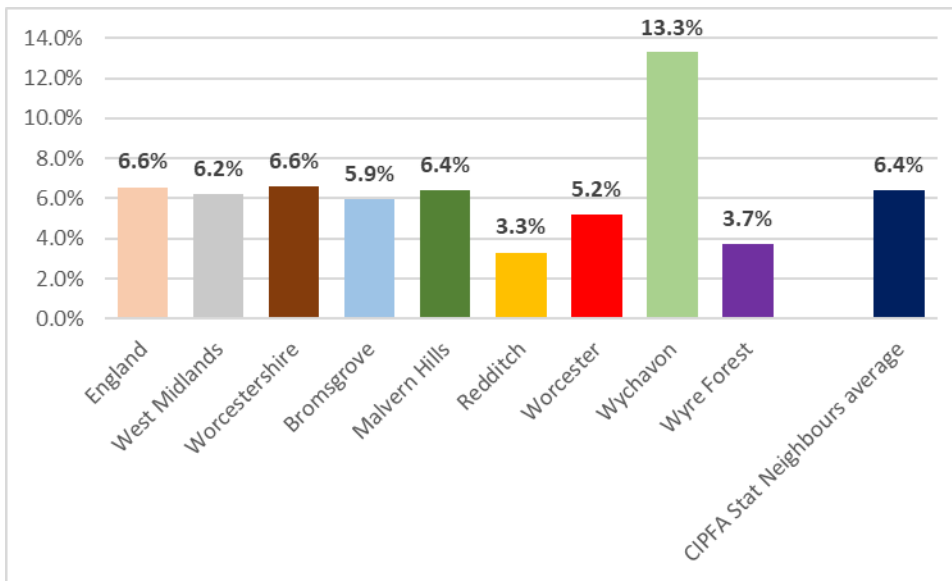
The Census contains a wealth of information at a local level including questions about work, health, national identity, passports held, ethnic background, education, second homes, language, religion and marital status. For the first time, census data will also include data on how many people have served in the armed forces, and also asked voluntary questions for those aged 16 and over on sexual orientation and gender identity.

Data will be released in phases between Summer 2022 and Summer 2023. The next release will be from October to the end of 2022 and will include topics such as demography and migration data, ethnicity, language and religion data.

## 4. Total Population and Population Change

### Change in population by district, 2011-21

Area	2011	2021	Change 2011-21	% Change 2011-2021
Bromsgrove	93,600	99,200	5,600	5.9%
Malvern Hills	74,600	79,400	4,800	6.4%
Redditch	84,200	87,000	2,800	3.3%
Worcester	98,800	103,900	5,100	5.2%
Wychavon	116,900	132,500	15,600	13.3%
Wyre Forest	98,000	101,600	3,600	3.7%
<b>Worcestershire</b>	<b>566,200</b>	<b>603,600</b>	<b>37,400</b>	<b>6.6%</b>
<b>England</b>	<b>53,012,500</b>	<b>56,489,800</b>	<b>3,477,300</b>	<b>6.6%</b>



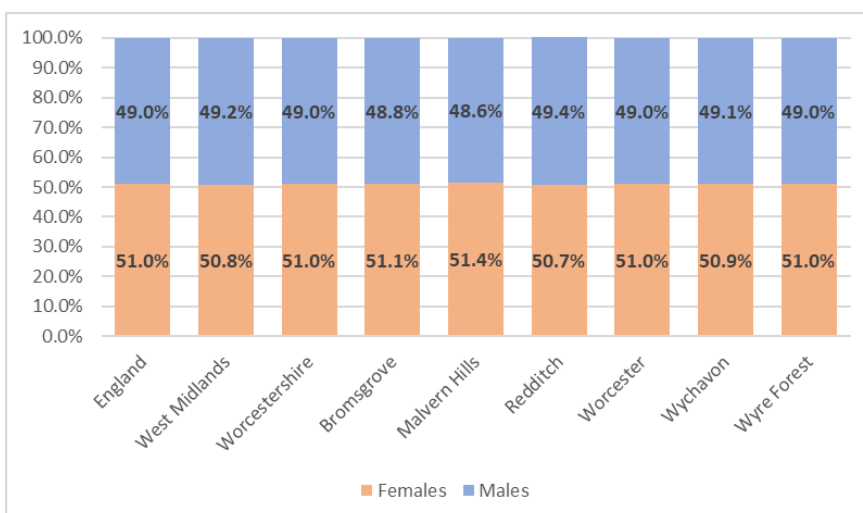
Worcestershire's population according to the 2021 census is 603,600 persons. This compares to 566,200 in 2011. The population in the county has increased by 37,400 since 2011, an increase of 6.6% in the last 10 years. This compares to increases of 6.6% nationally and 6.2% regionally.

In terms of the Worcestershire districts, the highest proportional increase over the last ten years has been in Wychavon, at 13.3%, representing an increase in population of 15,600 persons. Malvern Hills has had a similar proportional increase to the county as a whole of 6.4% (4,800 persons), whilst Bromsgrove has had a proportional increase of 5.9%, or 5,600 persons

In contrast the proportional increase in Redditch over the ten-year period has been just 3.3%, representing an increase of 2,800 persons in that district, whilst the increase in Wyre Forest was around 3.7%, or 3,600 persons.

The average percentage population increase across seventeen of Worcestershire's closest CIPFA statistical neighbours is 6.4%, which is similar to the Worcestershire increase. Changes in population range from over 9% in Leicestershire, Warwickshire, Cambridgeshire, and West Sussex, to no change in Cumbria.

**Population by sex, 2021**



The population in Worcestershire in 2021 is 51% female, representing 307,900 persons. This is similar to the national average. Proportions of females are particularly high in Malvern Hills, and relatively low in Redditch, although all districts have a higher proportion of females than males.

#### Difference in population between census and ONS projected 2021 figure by district

	<b>Census 2021</b>	<b>Projected 2021 Population from 2018-based projections</b>	<b>Projected population difference from census</b>	<b>Percentage difference</b>
<b>Worcestershire</b>	<b>603,600</b>	<b>605,400</b>	<b>1,800</b>	<b>0.3%</b>
Bromsgrove	99,200	101,400	2,200	2.2%
Malvern Hills	79,400	80,400	1,000	1.3%
Redditch	87,000	85,200	-1,800	-2.2%
Worcester	103,900	102,200	-1,700	-1.7%
Wychavon	132,500	133,400	900	0.7%
Wyre Forest	101,600	102,800	1,200	1.2%

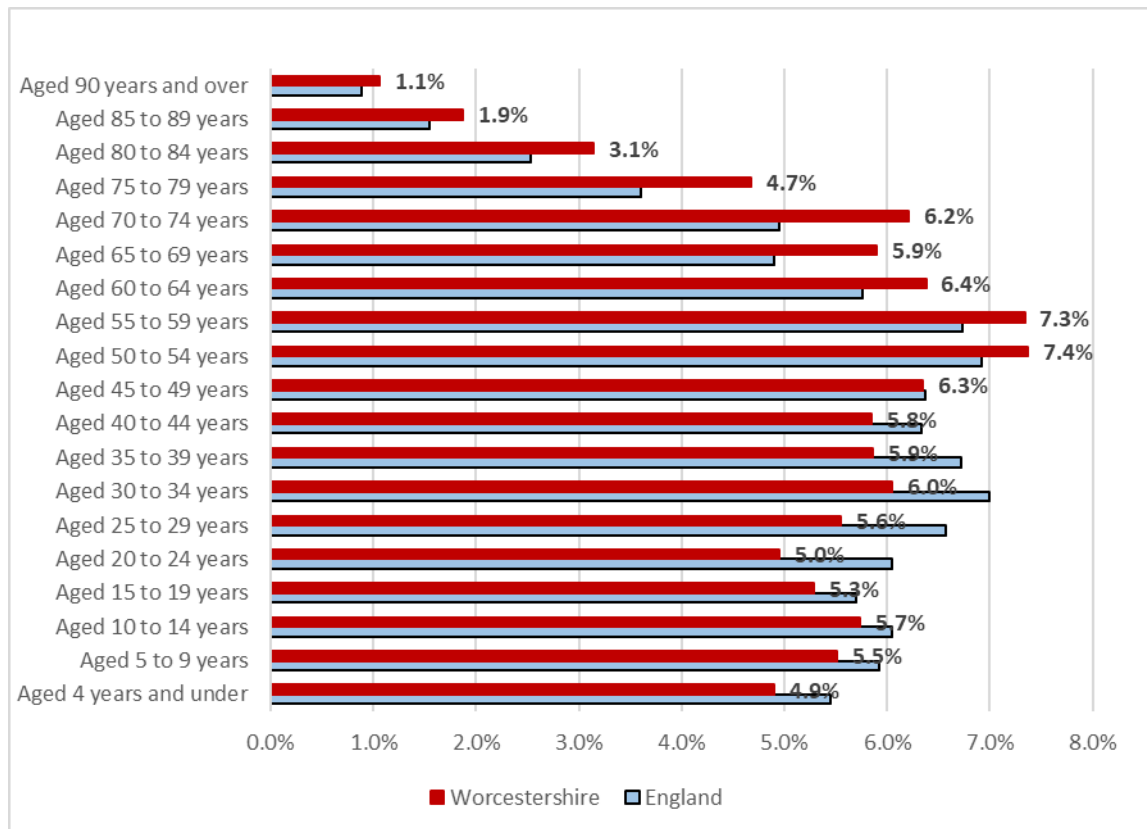
A comparison with the 2021 projected figure taken from the 2018-based ONS principle projections suggest that the projections slightly over-estimated the population in Worcestershire compared to the Census, by about 1,800 persons.

The largest over-estimate at a district level was in Bromsgrove (2,200) with over-estimates of about 1,000 in Malvern Hills, Wychavon, and Wyre Forest. The population projections under-estimated the population in Worcester and Redditch in 2021 by around 1,700 and 1,800 respectively.

It is noted that the projections are trend based and use data on births, deaths, and migration from the last 5 years to produce projected figures. They do not take into account changes that may affect future population such as changes to rates of housebuilding, political changes that affect migration, or economic changes. They also could not consider the effects of the Covid-19 pandemic and lockdowns.

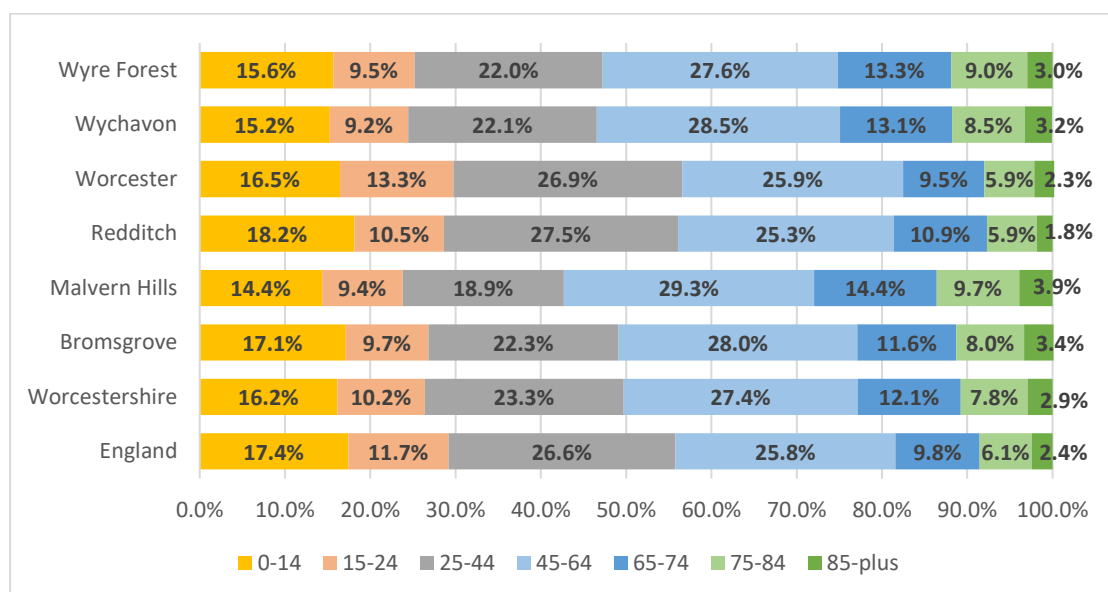
## 5. Population by age group

### Worcestershire population proportion by 5-year age group, 2021



Worcestershire has a higher proportion of older people than the national average, and a lower proportion of children and younger adults. The proportions in the county and the whole of England are similar for the 45-49 age range, with proportions lower in Worcestershire than the national average for all younger age groups, and higher in Worcestershire for all older age groups.

Difference in proportions between Worcestershire and England are particularly prevalent in the 20 to 39 age range, with Worcestershire having a notably lower proportion of population, and the 65 to 79 age range, with Worcestershire having a considerably higher proportion of population

**Worcestershire and districts population proportion by broad age group, 2021**


The proportion of people aged 65-plus in Worcestershire almost 23% of all people living in the county representing 138,000 persons. This compares to the national average of just over 18%. Proportions of people aged 65-plus are particularly high in Malvern Hills (around 28%) as well as in Wychavon and Wyre Forest, both at around 25%. In contrast, the proportion of people aged 65-plus in Worcester is less than 18%, and in Redditch is less than 19%.

Almost 11% of people in Worcestershire are aged 75-plus, compared to less than 9% nationally. Proportions of 75-plus are particularly high in Malvern Hills, at almost 14%, and in Wyre Forest and Wychavon, at almost 12%. Proportions in Redditch and Worcester are around 8%.

The proportion of people aged 0-14 is just over 16% in Worcestershire, representing 97,500 persons. This compares to the national average of over 17%. Proportions of people aged 0-14 are particularly low in Malvern Hills (just over 14%) and Wychavon (just over 15%). In Redditch, the 0-14 age group is over 18%, higher than the national average.

Just over 10% of people living in the county are aged 16-24, lower than the national average of almost 12%. Proportions of people aged 16-24 are particularly low in Wychavon, Malvern Hills, and Wyre Forest, at just over 9%. Proportions are highest in Worcester City at over 13%, higher than the national average, due at least in part to young people in the city attending the University of Worcester.

**Change in key population age groups in Worcestershire 2001-2021**

	Census 2011	Census 2021	Change	Percentage change
<b>0-19</b>	128,100	129,400	1,300	1.0%
<b>15-24</b>	65,400	61,800	-3,600	-5.5%
<b>25-44</b>	139,500	140,700	1,200	0.8%
<b>45-64</b>	158,500	165,600	7,100	4.5%
<b>65-plus</b>	109,100	138,000	28,900	26.5%
<b>75-plus</b>	50,500	64,900	14,400	28.6%
<b>85-plus</b>	14,900	17,700	2,800	18.9%
<b>Total population</b>	<b>566,200</b>	<b>603,600</b>	<b>37,400</b>	<b>6.6%</b>



The number of people aged 65-plus in Worcestershire has increased by almost 29,000 since 2011, a rise of almost 27%. This compares to a rise of just over 20% nationally. Increases in the 65-plus age group are particularly high in Redditch (over 36%) and Wychavon (almost 32%).

The 75-plus population has increased by over 14,400 persons (almost 29%) since 2011. This compares to an 18% change nationally. Wyre Forest, Wychavon, and Redditch have all recorded increases of over 30% in the 75-plus age range.

The 0-19 population has increased by about 1,300 persons (1.0%) since 2011, although the 0-4 population has decreased by almost 5% (around 1,500 persons). Nationally the number of 0-19's has increased by almost 3%. The only districts to experience an increase in numbers of 0-19-year olds over the ten-year time period are Bromsgrove and Wychavon, both with increases of just over 6%.

The number of people aged 15-24 has decreased by 3,600 in Worcestershire, representing a decline of around 5.5%. This compares to a national decrease of just over 4%. The number of 15-24-year olds declined by over 11% in Redditch, and over 9% in Wyre Forest. The only district with an increase in people aged 15-24 was Wychavon, at around 1%.

Wychavon has seen a particularly high population increase of 13%. The table below shows the changes for Wychavon in key age groups compared to the Worcestershire average.

#### Change in key population age groups in Wychavon 2001-2021

	Census 2011	Census 2021	Change	Percentage change	County change
<b>0-19</b>	25,200	26,700	1,500	6.1%	1.0%
<b>15-24</b>	12,100	12,200	100	1.0%	-5.5%
<b>25-44</b>	26,600	29,300	2,700	10.3%	0.8%
<b>45-65</b>	34,800	37,800	3,000	8.5%	4.5%
<b>65-plus</b>	25,000	32,900	7,900	31.5%	26.5%
<b>75-plus</b>	11,600	15,500	3,900	34.1%	28.6%
<b>85-plus</b>	3,400	4,200	800	22.6%	18.9%
<b>Total population</b>	<b>116,944</b>	<b>132,500</b>	<b>15,556</b>	<b>13.3%</b>	<b>6.6%</b>

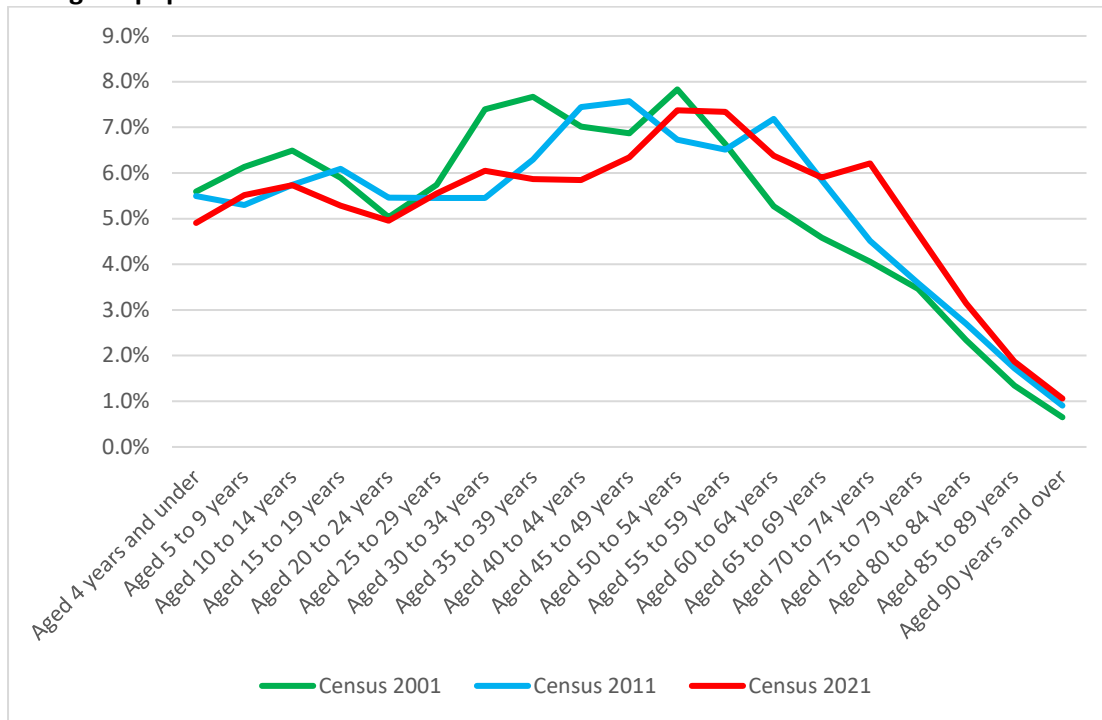
Wychavon has seen higher increases across all age groups than have been seen in the county as a whole. Differences in all age groups account for the large rise in population seen in Wychavon.

Notably high increases include in the 25-44 age group (a rise of over 10% compared to less than 1% across the whole of Worcestershire) and in the 45-64 age group (an increase of almost 9% compared to almost 5% across the whole of the county).

Wychavon has also seen a notably high increase in older people, with the 65-plus population rising by almost 32% compared to the Worcestershire average of 27%.

The number of people aged 0-19 has risen in Wychavon by over 6% compared to around 1% across the whole of the county, and the 15-24 age range experienced a small rise of around 1% compared to a decline of almost 6% across the whole of Worcestershire.

**Change in population structure of Worcestershire 2001-2021**

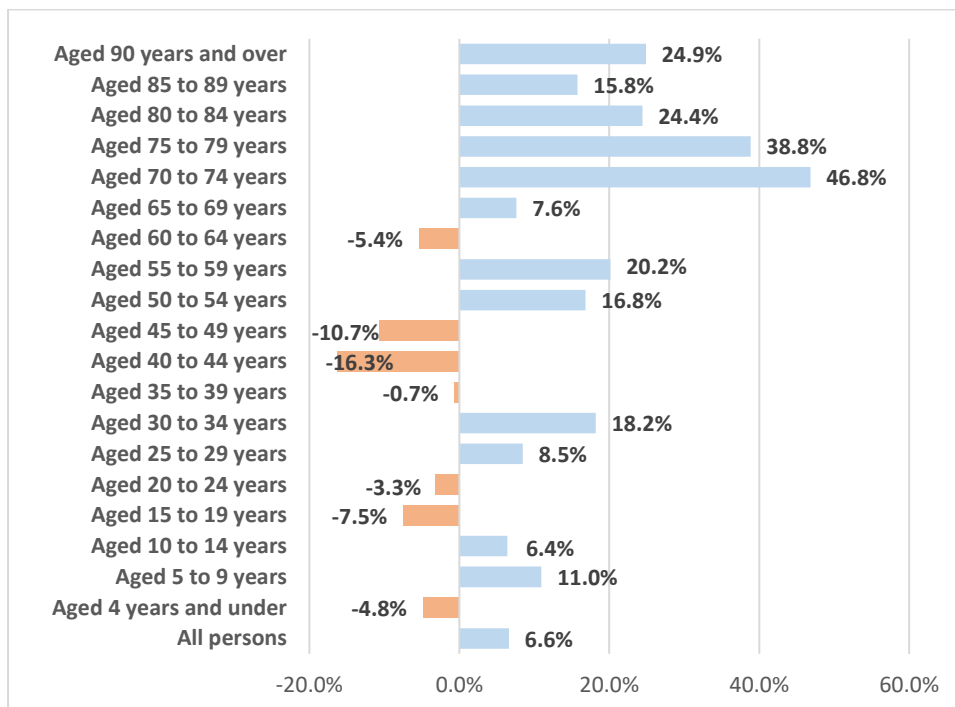


The age structure within Worcestershire according to the 2021 census is older than has been the case previously. The proportion of people aged 65-plus is almost 23% in 2021, compared to just over 19% in 2011 and just over 16% in 2001. The percentage of people aged 85-plus has grown from 2% in 2001 to almost 3% in the 2021 Census.

In contrast, the proportion of people aged 0-19 resident in the county has steadily decreased and is just over 21% in 2021 compared to over 24% in the 2001 figures.

The small peak in the population at the 70-74 age range in the 2021 Census figures represents the "Baby Boom" generation. As this age group ages on and approaches 80 in the next few years this will have consequences and potentially add to demand for social care and medical services.

**Proportional Change in population by 5-year age group in Worcestershire 2011-21**

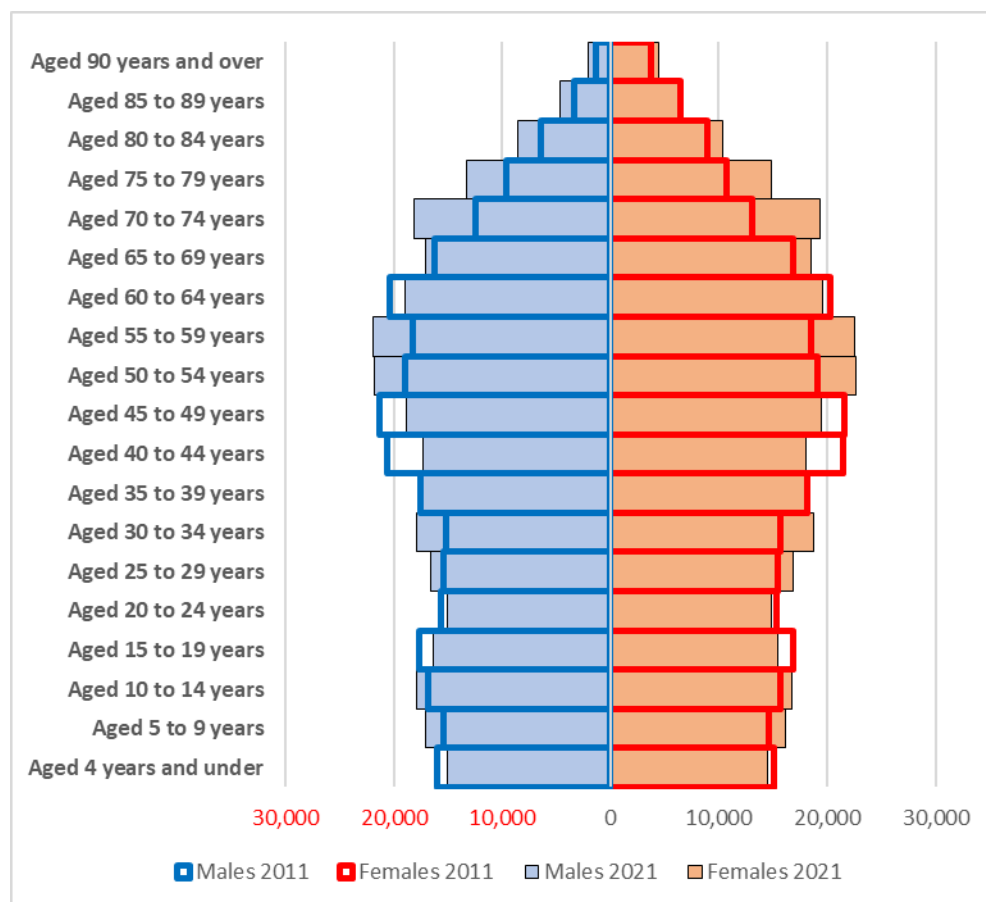


The above graph reinforces the notable rise in older age groups in the ten years since the 2011 census. Rises in the 70-74 and 75-79 age ranges are particularly prevalent.

Other age groups to have experienced a notable increase over the 10 years include the 5 to 14, the 25 to 34 and the 50 to 59 age groups.

Age groups that have declined since the previous Census in 2011 include the 0-4 age group, the 15-24 age range, the 40-49 age group and the 60-64 age range.

**Population by sex and by 5-year age group in Worcestershire 2011 and 2021**



The change in 5-year age groups over the past ten years by gender shows: -

- The increase in 80-89-year olds in numerical terms is notably higher among males than females.
- Conversely, the increase in 65-79-year olds in numerical terms is notably higher among females than males.
- The decrease in 60-64-year olds in numerical terms is notably higher among males than females.
- The decline in those aged under 5 in numerical terms is notably higher among males than females.
- The increase in 50-54-year olds in numerical terms is notably higher among females than males.
- The decrease in 45-49-year olds in numerical terms is notably higher among males than females.

**Difference in population between census and ONS projected 2021 figure by district**

	All Persons	0-14	15-24	25-44	45-64	65-74	75-plus
<b>Projected population 2021</b>	605,400	100,800	60,500	138,800	164,900	73,700	66,800
<b>Census 2021</b>	603,600	97,500	61,800	140,700	165,600	73,100	64,900
<b>Difference</b>	1,900	3,300	-1,300	-1,900	-700	600	1,900
<b>Percentage difference</b>	0.3%	3.3%	-2.1%	-1.4%	-0.4%	0.8%	2.8%

The comparison with the 2021 projected figures by age group suggest that the projections over-estimated the population in Worcestershire among children and in the older age groups, most notably the 75-plus age range. Numbers of 0-14-year-olds were over-estimated in the projections by about 3,300 persons, whilst the numbers of people aged 75-plus were over-estimated by 1,900.

In contrast, the number of people aged 15-64 were slightly under-estimated in the projections. The age range where the under-estimate was largest is the 25-44 age group, at around 1,900.

## 6. Households

### Change in Households with at least one usual resident by area

Area	Households 2011	Households 2021	Change in Household Numbers 2011-21	Percentage Change in Households 2011-21
Bromsgrove	38,300	41,300	3,000	7.9%
Malvern Hills	32,200	34,900	2,700	8.3%
Redditch	34,700	36,400	1,700	4.8%
Worcester	42,000	44,700	2,700	6.3%
Wychavon	49,500	57,400	7,900	16.0%
Wyre Forest	43,000	45,300	2,300	5.4%
<b>Worcestershire</b>	<b>239,700</b>	<b>259,900</b>	<b>20,200</b>	<b>8.4%</b>
<b>West Midlands</b>	<b>2,294,909</b>	<b>2,429,500</b>	<b>134,591</b>	<b>5.9%</b>
<b>England</b>	<b>22,063,400</b>	<b>23,435,700</b>	<b>1,372,300</b>	<b>6.2%</b>
CIPFA Statistical Neighbours Average	N/A	N/A	N/A	8.0%

In 2021 Worcestershire has an estimated 259,900 households with at least one usual resident. Over the 2011-21-time frame, the proportional increase in households within Worcestershire has been 8.4%, higher than both the national average of 6.2% and the regional average of 5.9%. The level of growth in households is particularly high in Wychavon at 16% since 2011, which is consistent with the high population increase in that district, whilst Malvern Hills and Bromsgrove have both seen household increases of around 8%.

The average household increase across seventeen of Worcestershire's closest CIPFA statistical neighbours is 8.0%, similar to the Worcestershire increase of 8.4%. Increases in occupied households among CIPFA neighbours range from over 10% in Leicestershire, Cambridgeshire, and Somerset, to just over 3% in Cumbria.

**Change in Population per households with at least one usual resident by area**

Area	Population per household 2011	Population per household 2021	Change in Population per household 2011-21
Bromsgrove	2.45	2.40	-0.04
Malvern Hills	2.32	2.28	-0.04
Redditch	2.43	2.39	-0.04
Worcester	2.35	2.32	-0.02
Wychavon	2.36	2.31	-0.06
Wyre Forest	2.28	2.24	-0.04
<b>Worcestershire</b>	<b>2.36</b>	<b>2.32</b>	<b>-0.04</b>
<b>West Midlands</b>	<b>2.44</b>	<b>2.45</b>	<b>0.01</b>
<b>England</b>	<b>2.40</b>	<b>2.41</b>	<b>0.01</b>
CIPFA Statistical Neighbours Average	2.35	2.32	-0.03

Another potential issue is the change in average number of people in each household (or "average household size"). Direct accurate figures for average household size cannot be calculated at the moment as population in households has not yet been released – the total population includes those persons who do not live in households and live in communal establishments. However, an estimate of population per household can be derived.

In Worcestershire the population per household has fallen over the ten years, meaning that more households in the county are needed to cater for the same population level. This decline is not present in the national or regional figures, which have stayed largely constant over the ten years. This is likely to be due to the higher proportion of older people in Worcestershire, who are more likely to live in one-person households or smaller households.

There is some evidence that at least some of Worcestershire statistical neighbours are also experiencing a decrease in population per household. The average decrease across CIPFA statistical neighbours is 0.03, ranging from a 0.09 decrease in North Yorkshire, to a 0.02 increase in West Sussex.