

Worcestershire Waste Core Strategy

SUMMARY OF FIRST DRAFT SUBMISSION CONSULTATION

We need your views about our proposals for waste management planning in Worcestershire up to the year 2027.

You can help us by telling us what you think about our "**Draft Submission**" document. This document has been informed by the **Emerging Preferred Options** consultation with the public, businesses and partners carried out in **Autumn 2009**.

The consultation period will run from **28th September** to **9th November 2010**. This is your opportunity to suggest locations for "Areas of Search" and the last opportunity to make significant changes to the **Waste Core Strategy**.

THE PURPOSE OF THE STRATEGY

We all produce waste. It is a fact of life that much of this is currently landfilled.

If we have the right type of waste management facilities in the right place at the right time, we can reuse, recycle or recover energy from our waste and turn it into a resource.

The Waste Core Strategy is designed to make sure that there are enough opportunities for new waste management facilities in Worcestershire to be able to deal with the county's waste.

The Waste Core Strategy provides a picture of what we hope waste management in Worcestershire will be like in 2027. As part of the strategy we have developed a vision which gives us a sense of direction and objectives and a set of policies to help us to achieve this vision.

THE VISION

By 2027 waste production in Worcestershire will be minimised and what is produced will be regarded as a source of useful material to be reused. So far as possible this resource will be managed in Worcestershire itself, in accordance with the principles of sustainable development and the waste hierarchy. There will be sufficient waste management capacity in Worcestershire to enable waste to be treated as a resource and support the local economy without compromising the County's distinctive environmental, social and cultural assets. These facilities will be located where they minimise the need to move waste by road and where they are best suited to serve the needs of local communities and the local economy. They will be designed to adapt to and mitigate climate change and will reflect the characteristics of the local area.

THE OBJECTIVES

- | | |
|---|---|
| <p>WO1 To base our decisions on the principles of sustainable development and the need to reduce greenhouse gas emissions and mitigate climate change.</p> | <p>WO5 To address the "Capacity Gap" between how much waste management capacity we have and what we need over the plan period to 2027.</p> |
| <p>WO2 To protect and enhance the county's natural resources, environmental, social, cultural and economic assets and the character and amenity of the local area.</p> | <p>WO6 To safeguard existing waste management facilities from incompatible development.</p> |
| <p>WO3 To do everything possible to minimise waste production and make driving waste up the waste hierarchy the basis for waste management in Worcestershire.</p> | <p>WO7 To reduce waste miles by road where possible.</p> |
| <p>WO4 To ensure that the waste implications of all new development in Worcestershire are taken into account.</p> | <p>WO8 To encourage communities in Worcestershire to take responsibility for their own waste and involve all those affected as openly and effectively as possible.</p> |
| | <p>WO9 To develop a waste management industry that contributes positively to the local economy.</p> |

Find out more online:

www.worcestershire.gov.uk/wcs



worcestershire
county council



THE POLICIES

WCS 1: **Location of Waste Management Development:**

To make sure that the right type of development happens in the right place the Waste Core strategy identifies areas of search for waste management development. These are the broad locations that we think would be most suitable for waste management facilities (see map). We would be particularly interested to know if there are any other locations you think may be suitable for consideration as areas of search. The policy also sets out how proposals outside the areas of search should be dealt with.

WCS 2: **Ensuring sustainable waste management development:**

sets out the environmental, social and economic considerations that need to be balanced to make sure that new waste management development contributes towards the aims of sustainable development.

WCS 3: **Managing waste from new development:**

sets out how all new development (including residential, commercial, industrial and waste management developments) must consider the reduction, reuse and recycling of waste. It looks at the construction, occupation and demolition stages of all developments.

WCS 4: **Managing the impact of new waste management development:**

sets out how proposals for new waste management facilities must consider the ways that their operations might affect natural resources, environmental, social, cultural and economic assets and the character and amenity of the county and how any impacts can be minimised.

Specialised Waste Management Facilities (*policies applicable to specific types of facilities*):

WCS 5: **Energy from Waste:**

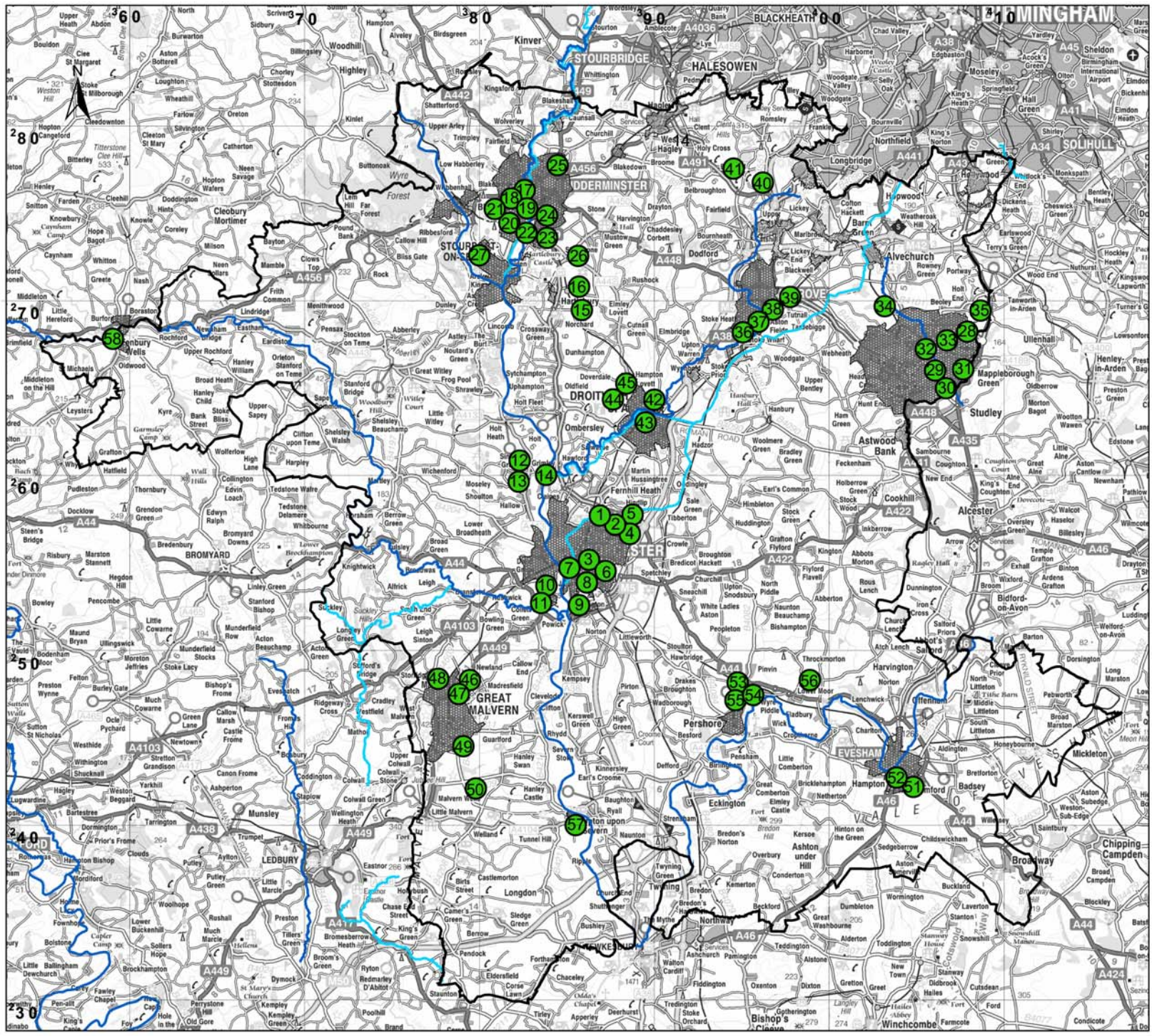
The Waste Core Strategy promotes the reuse and recycling of resources. Where this is not possible the recovery of energy from residual waste will be expected. Recovering energy from the remaining waste that cannot be recycled is an important part of the waste hierarchy.

WCS 6: **Landfill:**

The Waste Core Strategy aims to reduce the amount of waste going to landfill, but there will still be a small amount of waste that needs to be disposed of. This policy sets out when this will be allowed and the extra criteria that planning applications for landfill will need to meet.

WCS 7: **Managing the impact of surrounding uses:**

This policy looks at safeguarding existing waste management facilities.



Waste Core Strategy for Worcestershire

Areas of Search

- County Boundary
- Principal Urban Areas
- Other Settlements
- Major Rivers
- Canals
- Areas of Search locations (Numbers refer to table of areas of search)

Table of Areas of Search

- Worcester and its expansion areas**
- | | |
|-----------------------------------|--------------------------------------|
| 1. Shire Business Park | 8. Sherriff Street Industrial Estate |
| 2. Berkeley Business Park | 9. Diglis Industrial Estate |
| 3. Great Western Business Park | 10. Venture Business Park |
| 4. Buckholt Business Centre | 11. Weir Lane Industrial Estate |
| 5. Warndon Business Park | 12. Ball Mill Top Business Centre |
| 6. Newtown Road Industrial Estate | 13. Top Barn Business Centre |
| 7. Shrubhill Industrial Estate | 14. Ball Mill Quarry Complex |
- Kidderminster, Stourport and Bewdley**
- | | |
|------------------------------------|---------------------------------|
| 15. Hartlebury Trading Estate | 21. Hoo Farm Industrial Estate |
| 16. Waresley Quarry | 22. Foley Industrial Estate |
| 17. Gemini Business Park | 23. Former British Sugar Site |
| 18. Oldington Trading Estate | 24. Vale Industrial Estate |
| 19. Birchen Coppice Trading Estate | 25. Greenhill Industrial Estate |
| 20. Foley Business Park | 26. Ikon Industrial Estate |
| | 27. Blackstone Quarry |
- Redditch**
- | | |
|---------------------------------|--------------------------------|
| 28. East Moons Moat | 32. Kingfisher Enterprise Park |
| 29. Park Farm Industrial Estate | 33. Lakeside Industrial Estate |
| 30. Pipers Road Park Farm | 34. Weights Farm Business Park |
| 31. Washford Industrial Estate | 35. Ravensbank Business Park |
- Bromsgrove**
- | | |
|--------------------------------------|--------------------------|
| 36. Buntsford Hill Industrial Estate | 40. Pinches Quarry |
| 37. Buntsford Gate Business Park | 41. Stanley Evans Quarry |
| 38. Silver Birches Business Park | |
| 39. Bromsgrove Technology Park | |
- Droitwich**
- | | |
|-------------------------------------|--------------------------------------|
| 42. Berry Hill Industrial Estate | 45. Hampton Lovett Industrial Estate |
| 43. Former Coal Yard, Union Lane | |
| 44. Stonebridge Cross Business Park | |
- Malvern**
- | | |
|-----------------------------------|--|
| 46. Enigma Business Park | 49. Blackmore Business and Technology Park |
| 47. Spring Lane Industrial Estate | 50. Merebrook Industrial Estate |
| 48. Link Business Centre | |
- Evesham and Pershore**
- | | |
|------------------------------------|-----------------------------|
| 51. Vale Business Park | 55. Pershore Trading Estate |
| 52. Four Pools Industrial Estate | 56. Hill and Moor Landfill |
| 53. Keytec7 Business Park | |
| 54. Racecourse Road Trading Estate | |
- Upton upon Severn and Tenbury Wells**
- | | |
|---|--|
| 57. Upton upon Severn Industrial Estate | |
| 58. Tenbury Business Park | |



This map is reproduced from Ordnance Survey material with the permission of Ordnance Survey on behalf of the Controller of Her Majesty's Stationery Office. © Crown copyright. Unauthorised reproduction infringes Crown copyright and may lead to prosecution or civil proceedings. Worcestershire County Council, 100015914. For reference purposes only. No further copies may be made.



HOW CAN I FIND OUT MORE AND MAKE COMMENTS ON THE WASTE CORE STRATEGY?

The full consultation document (*about 120 pages*), a summary document which gives the key points (*about 25 pages*) and questionnaire are available on our website www.worcestershire.gov.uk/wcs and in libraries and hubs.

Alternatively paper copies are available on request from:

Nicholas Dean
Directorate of Planning, Economy and Performance,
Minerals and Waste Planning Policy,
County Hall, Spetchley Road,
Worcester. WR5 2NP

Email: wcs@worcestershire.gov.uk

Phone: **01905 766374**

You will be able to answer some of the consultation questions after reading the summary document but others can only be answered after reading the full document. We will also accept comments in writing to the postal or email address above.

It is important that you make any comments before **9th November 2010** so that we can fully consider your comments.

NEXT STEPS

All consultation comments will be considered in preparing the final version of the document which will be submitted to the Secretary of State. We intend to consult on this final version in early 2011, but at this stage you will only be able to comment on whether the Waste Core Strategy is "sound". It is government policy that to be sound the Strategy must be justified, effective and consistent with national policy.