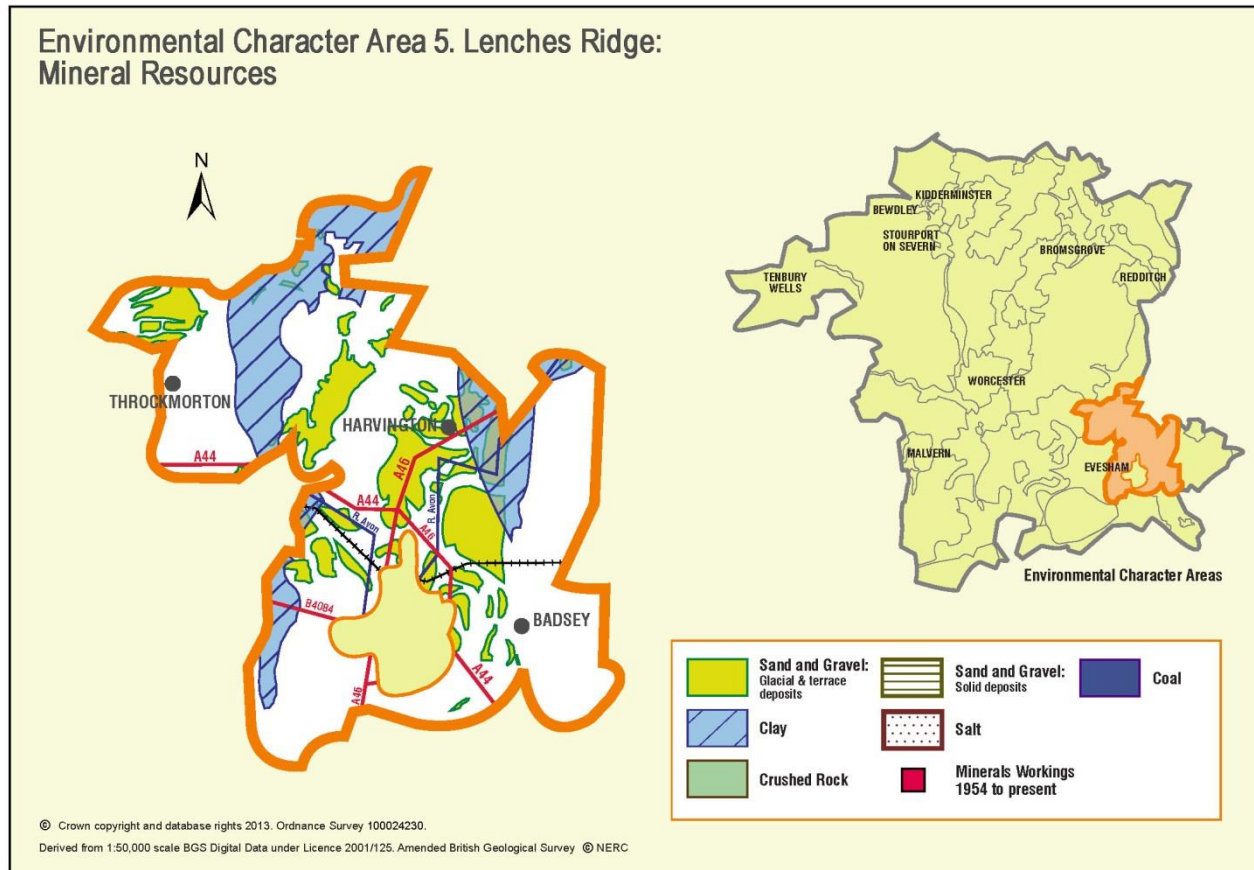


Appendix 5: Analysis of aggregate resources in ECA 5: Lenches Ridge



ECA Summary for the Third Stage consultation on MLP (Spring 2015):

Sand and gravel

There are 33 resource areas identified for sand and gravel in Lenches Ridge ECA:

- Key: 4
- Significant: 5
- Not significant: 18
- Compromised: 6

Crushed rock

There are no resource areas identified in Lenches Ridge ECA for crushed rock.

Non-aggregates

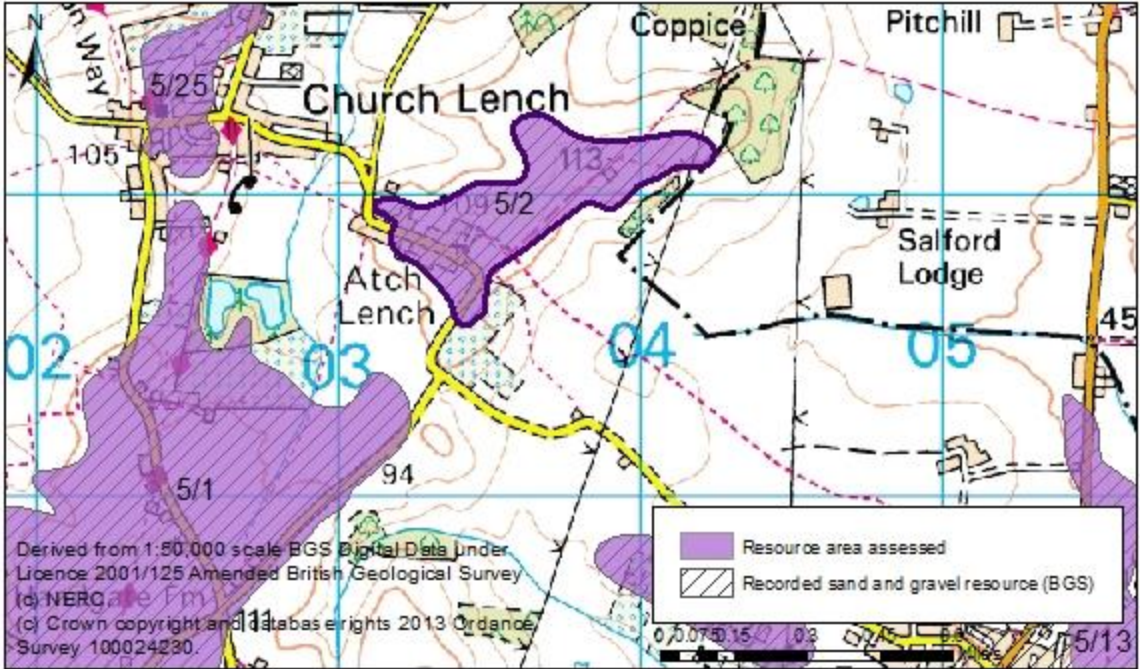
BGS data indicates that there are deposits of clay in this ECA.

Overview of resource assessment for ECA 5

Sand and gravel resource areas:

Resource number*	Second Stage Consultation		Third Stage Consultation	
	Original estimated resource tonnage (2 tonnes/m ³)	Significance	Revised estimate of resource tonnage (1.65 tonnes/m ³)	Significance
5/1	14,100,000	Key	11,632,500	Key
5/2	Depth not known	Not significant	Depth not known	Not significant
5/3	Depth not known	Not significant	Depth not known	Not significant
5/4	Depth not known	Not significant	Depth not known	Not significant
5/5	918,000	Significant	757,350	Significant
5/6	Depth not known	Not significant	Depth not known	Not significant
5/7	7,800,000	Key	6,435,000	Key
5/8	780,000	Significant	643,500	Significant
5/9	Depth not known	Not significant	Depth not known	Not significant
5/10	Depth not known	Not significant	Depth not known	Not significant
5/10a	Depth not known	Compromised	Depth not known	Compromised
5/11	Depth not known	Not significant	Depth not known	Not significant
5/11 a	Depth not known	Compromised	Depth not known	Compromised
5/12	Depth not known	Not significant	Depth not known	Not significant
5/13	Depth not known	Significant	Depth not known	Significant
5/13a	Depth not known	Compromised	Depth not known	Compromised
5/14	Depth not known	Not significant	Depth not known	Not significant
5/15	Depth not known	Not significant	Depth not known	Not significant
5/16	3,540,000	Key	2,920,500	Key
5/17	5,184,000	Key	4,276,800	Key
5/17 a	1,704,000	Compromised	1,405,800	Compromised
5/18	Depth not known	Not significant	Depth not known	Not significant
5/19	Depth not known	Compromised	Depth not known	Compromised
5/20	Depth not known	Not significant	Depth not known	Not significant
5/21	Depth not known	Not significant	Depth not known	Not significant
5/22	Depth not known	Not significant	Depth not known	Not significant
5/23	Depth not known	Not significant	Depth not known	Not significant
5/24	Depth not known	Not significant	Depth not known	Not significant
5/25	Depth not known	Compromised	Depth not known	Compromised
5/26	Depth not known	Significant	Depth not known	Significant
5/27	Depth not known	Significant	Depth not known	Significant
5/28	Depth not known	Not significant	Depth not known	Not significant
5/29	Depth not known	Not significant	Depth not known	Not significant

Overview	
Resource number:	5/1
Resource name:	Sheriff's Lench
Resource area:	235ha
Resource depth:	Estimated 6.1m
Location	
OS sheet reference:	SP 05 SW
National grid ref:	402059, 249325
Resource description:	
Resource description:	<p>A deposit of fluvio-glacial sand and gravel caps the summit of the plateau around Sheriff's Lench. The deposit is composed mainly of reddish, brown sand with bunter pebbles and occasional flints. Thicknesses are difficult to estimate but it appears that about 6.1m of sand and gravel may be present in the immediate vicinity of Sheriff's Lench. Variation in thickness is suggested by the occurrence of Lias clay at depths of between 0.6m and 1.2m in several places, although the Lias clay may in fact be part of the gravel deposit.</p> <p>(Estimated resource depth based on 6.1m depth at Sheriff's Lench)</p>
Assessment of resource for the second consultation on MLP (Autumn 2013)	
Commentary:	A large deposit, with small-scale dispersed development across the resource area.
Crude estimate of resource:	<p>Area: 235ha x average depth: 6m / 2</p> <p>Estimated resource volume: 7,050,000 m³</p> <p>Estimated resource tonnage (at 2 t/m³): 14,100,000 tonnes</p>
Conclusion:	<p>Significant – key resource.</p> <p>Use to define areas of search.</p>
Assessment of resource for the Third Stage consultation on MLP (Spring 2015)	
Revised estimate of resource:	<p>Area: 235ha x average depth: 6m / 2</p> <p>Estimated resource volume: 7,050,000 m³</p> <p>Estimated resource tonnage (at 1.65 t/m³): 11,632,500 tonnes</p>
Conclusion:	Significant – key resource.

Overview	
Resource number:	5/2
Resource name:	Atch Lench
Resource area:	27ha
Resource depth:	Not known
Location	
OS sheet reference:	SP 05 SW
National grid ref:	403625, 250968
	
Resource description:	
Resource description:	Fluvio glacial deposit of sand and gravel. No exposures and no information on depth available for this resource area.
Assessment of resource for the second consultation on MLP (Autumn 2013)	
Commentary:	A small deposit, with a small-scale settlement in the south-west of the resource area.
Crude estimate of resource:	Depth not known.
Conclusion:	Not significant: Small deposit with no information to estimate the resource in this area. Not for consideration in defining areas of search.
Assessment of resource for the Third Stage consultation on MLP (Spring 2015)	
Revised estimate of resource:	No change to the assessment.
Conclusion:	Not significant.

Overview		
Resource number:	5/3	
Resource name:	Cherry Orchard	
Resource area:	22ha	
Resource depth:	Not known	
Location		
OS sheet reference:	SP 04 NW, SP 04 SW	
National grid ref:	401401, 245190	
Resource description:		
Resource description:	3 rd terrace (New Inn) sand and gravel. No exposures but bunter pebbles and flints occur as field surface debris in brown sandy and loamy soils.	
Assessment of resource for the second consultation on MLP (Autumn 2013)		
Commentary:	A small deposit. Small-scale development in west of resource area.	
Crude estimate of resource:	Depth not known.	
Conclusion:	Not significant: Small deposit with no information to estimate the resource in this area. Not for consideration in defining areas of search.	
Assessment of resource for the Third Stage consultation on MLP (Spring 2015)		
Revised estimate of resource:	No change to the assessment.	
Conclusion:	Not significant.	

Overview	
Resource number:	5/4
Resource name:	Ryden Farm
Resource area:	40ha
Resource depth:	Not known
Location	
OS sheet reference:	SP 04 NW
National grid ref:	402002, 245542
Resource description:	
Resource description:	3 rd terrace (New Inn) sand and gravel. No exposures but bunter pebbles and flints occur as field surface debris in brown sandy and loamy soils.
Assessment of resource for the second consultation on MLP (Autumn 2013)	
Commentary:	A small deposit with some development in the centre of resource area.
Crude estimate of resource:	Depth not known.
Conclusion:	Not significant: Small deposit with no information to estimate the resource in this area. Not for consideration in defining areas of search.
Assessment of resource for the Third Stage consultation on MLP (Spring 2015)	
Revised estimate of resource:	No change to the assessment.
Conclusion:	Not significant.

Overview	
Resource number:	5/5
Resource name:	Chadbury
Resource area:	34ha
Resource depth:	Estimated 2.7m
Location	
OS sheet reference:	SP 04 NW
National grid ref:	402363, 246537
Resource description:	
Resource description:	2 nd terrace (Wasperton) sand and gravel divided at two levels separated by a distinct feature. The Pit at Chadbury farm revealed 2.7m of sand and gravel (Estimated resource depth based on pit exposure depth of 2.7m)
Assessment of resource for the second consultation on MLP (Autumn 2013)	
Commentary:	A small resource intersected by a road and dispersed development. The A44 runs adjacent to the resource area along the south west boundary.
Crude estimate of resource:	Area: 34 ha x average depth: 2.7m / 2 Estimated resource volume: 459,000 m ³ . Estimated resource tonnage (at 2 t/m³): 918,000 tonnes
Conclusion:	Significant. Consider in defining areas of search.
Assessment of resource for the Third Stage consultation on MLP (Spring 2015)	
Revised estimate of resource:	Area: 34 ha x average depth: 2.7m / 2 Estimated resource volume: 459,000 m ³ . Estimated resource tonnage (at 1.65 t/m³): 757,350 tonnes
Conclusion:	Significant.

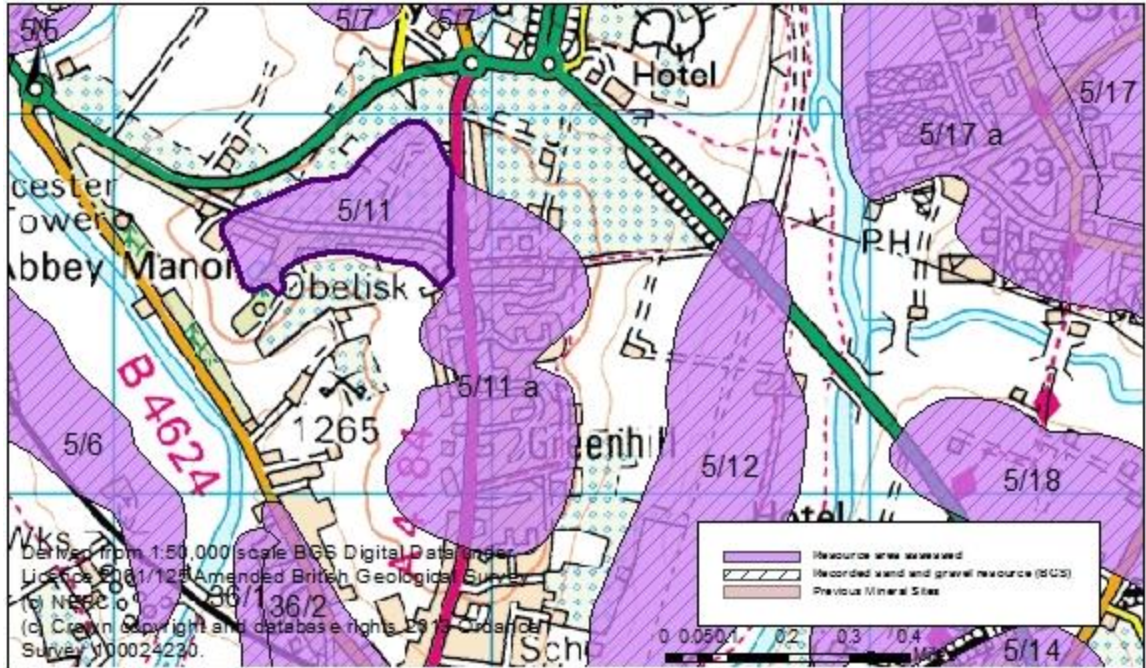
Overview		
Resource number:	5/6	
Resource name:	South east of Chadbury Lock	
Resource area:	36ha	
Resource depth:	Not known	
Location		
OS sheet reference:	SP 04 NW, SP 04 SW	
National grid ref:	402710, 245342	
Resource description:		
Resource description:	2 nd terrace (Wasperton) sand and gravel. The terrace is reportedly pitted with old workings, although no details are recorded, except that bunter pebbles and flints are common as surface debris.	
Assessment of resource for the second consultation on MLP (Autumn 2013)		
Commentary:	A small resource, intersected by railway line which runs the length of the area. Small scale development in the south of the site.	
Crude estimate of resource:	Depth not known.	
Conclusion:	Not significant: Small deposit with no information to estimate the resource in this area. Not for consideration in defining areas of search.	
Assessment of resource for the Third Stage consultation on MLP (Spring 2015)		
Revised estimate of resource:	No change to the assessment.	
Conclusion:	Not significant.	

Overview		
Resource number:	5/7	
Resource name:	Lenchwick	
Resource area:	260ha	
Resource depth:	Estimated 3m	
Location		
OS sheet reference:	SP 04 NW, SP 04 NE	
National grid ref:	403983, 247598	
Resource description:		
Resource description:	<p>The resource area is largely 4th terrace (Ailstone) with some 5th terrace (Pershore) sand and gravel to the east. The 4th terrace deposit consists largely of bunter and flint pebbles in a sandy matrix and is thought to be 3m deep. The 5th terrace is predominantly bunter pebbles with subordinate flints in quartzose sand. (Estimated resource depth based on 4th terrace depth of 3m)</p>	
Assessment of resource for the second consultation on MLP (Autumn 2013)		
Commentary:	A large deposit intersected by a road with some ribbon development.	
Crude estimate of resource:	Area: 260ha x average depth: 3m / 2 Estimated resource volume: 3,900,000m ³ Estimated resource tonnage (at 2 t/m³): 7,800,000 tonnes	
Conclusion:	Significant – key resource. Use to define areas of search.	
Assessment of resource for the Third Stage consultation on MLP (Spring 2015)		
Revised estimate of resource:	Area: 260ha x average depth: 3m / 2 Estimated resource volume: 3,900,000m ³ Estimated resource tonnage (at 1.65 t/m³): 6,435,000 tonnes	
Conclusion:	Significant – key resource.	

Overview		
Resource number:	5/8	
Resource name:	Tythe Barn Farm	
Resource area:	26ha	
Resource depth:	Estimated 3m	
Location		
OS sheet reference:	SP 04 NW, SP 04 NE	
National grid ref:	404709, 248693	
Resource description:		
Resource description:	<p>4th terrace (Ailstone) sand and gravel. Bunter and flint pebbles in brown loamy and sandy soils forming a field surface debris. No exposures indicating the depth of the deposit. Sand and gravel in the adjacent resource area (ECA 5/7 Lenchwick) is thought to be 3m deep. (Estimated resource depth based on 4th terrace depth of 3m)</p>	
Assessment of resource for the second consultation on MLP (Autumn 2013)		
Commentary:	A small deposit intersected by a road.	
Crude estimate of resource:	Area: 26ha x average depth: 3m / 2 Estimated resource volume: 390,000m ³ Estimated resource tonnage (at 2 t/m³): 780,000 tonnes	
Conclusion:	Significant. Consider in defining areas of search.	
Assessment of resource for the Third Stage consultation on MLP (Spring 2015)		
Revised estimate of resource:	Area: 26ha x average depth: 3m / 2 Estimated resource volume: 390,000m ³ Estimated resource tonnage (at 1.65 t/m³): 643,500 tonnes	
Conclusion:	Significant..	

Overview		
Resource number:	5/10	
Resource name:	Ellenden Farm	
Resource area:	10ha	
Resource depth:	Not known	
Location		
OS sheet reference:	SP 04 NW	
National grid ref:	404880, 249089	
Resource description:		
Resource description:	4 th River terrace sand and gravel. No exposures.	
Assessment of resource for the second consultation on MLP (Autumn 2013)		
Commentary:	A small deposit, with small-scale dispersed development across the resource area. The deposit extends under the village of Harvington, this section is considered separately as resource area 5/10a.	
Crude estimate of resource:	Depth not known.	
Conclusion:	Not significant: Small deposit with no information to estimate the resource in this area. Not for consideration in defining areas of search.	
Assessment of resource for the Third Stage consultation on MLP (Spring 2015)		
Revised estimate of resource:	No change to the assessment.	
Conclusion:	Not significant.	

Overview		
Resource number:	5/10 a	
Resource name:	Ellenden Farm a)	
Resource area:	2ha	
Resource depth:	Not known	
Location		
OS sheet reference:	SP 04 NW	
National grid ref:	405027, 249301	
Resource description:		
Resource description:	4 th River terrace sand and gravel. No exposures.	
Assessment of resource for the second consultation on MLP (Autumn 2013)		
Commentary:	A small resource area compromised by the village of Harvington. The deposit extends to the south of Harvington, this section is considered separately as resource area 5/10.	
Crude estimate of resource:	Depth not known.	
Conclusion:	Compromised by development.	
Assessment of resource for the Third Stage consultation on MLP (Spring 2015)		
Revised estimate of resource:	No change to the assessment.	
Conclusion:	Compromised by development.	

Overview		
Resource number:	5/11	
Resource name:	Greenhill, Evesham	
Resource area:	15ha	
Resource depth:	Not known	
Location		
OS sheet reference:	SP 04 NW	
National grid ref:	403636, 245736	
Resource description:		
Resource description:	5 th terrace (Pershore) sand and gravel. The surface exhibits bunter and flint pebbles in brown sandy and loamy soil. No information on depth available.	
Assessment of resource for the second consultation on MLP (Autumn 2013)		
Commentary:	A small resource area with small-scale dispersed development across the resource area. The deposit continues to the south and east of this resource area where it is overlain by the settlement of Greenhill, Evesham, this section is considered separately as resource area 5/11a.	
Crude estimate of resource:	Depth not known.	
Conclusion:	Not significant: Small deposit with no information to estimate the resource in this area. Not for consideration in defining areas of search.	
Assessment of resource for the Third Stage consultation on MLP (Spring 2015)		
Revised estimate of resource:	No change to the assessment.	
Conclusion:	Not significant.	

Overview		
Resource number:	5/11a	
Resource name:	Greenhill, Evesham a)	
Resource area:	35ha	
Resource depth:	Not known	
Location		
OS sheet reference:	SP 04 NW	
National grid ref:	404005, 245286	
Resource description:		
Resource description:	5 th terrace (Pershore) sand and gravel. The surface exhibits bunter and flint pebbles in brown sandy and loamy soil. No information on depth available.	
Assessment of resource for the second consultation on MLP (Autumn 2013)		
Commentary:	A small resource area overlain by the settlement of Greenhill, Evesham. The deposit extends to the west, this section is considered separately as resource area 5/11.	
Crude estimate of resource:	Depth not known.	
Conclusion:	Compromised by development.	
Assessment of resource for the Third Stage consultation on MLP (Spring 2015)		
Revised estimate of resource:	No change to the assessment.	
Conclusion:	Compromised by development.	

Overview		
Resource number:	5/12	
Resource name:	Oxstalls	
Resource area:	47 ha	
Resource depth:	Not known	
Location		
OS sheet reference:	SP 04 NW & SP 04 SW	
National grid ref:	404545, 244981	
Resource description:		
Resource description:	2 nd terrace (Wasperton) sand and gravel. Brown sand and gravel adjacent to the River Avon alluvium. No exposures.	
Assessment of resource for the second consultation on MLP (Autumn 2013)		
Commentary:	A small deposit, with small-scale dispersed development across the resource area.	
Crude estimate of resource:	Depth not known.	
Conclusion:	Not significant: Small deposit with no information to estimate the resource in this area. Not for consideration in defining areas of search.	
Assessment of resource for the Third Stage consultation on MLP (Spring 2015)		
Revised estimate of resource:	No change to the assessment.	
Conclusion:	Not significant.	

Overview		
Resource number:	5/13	
Resource name:	Harvington	
Resource area:	51ha	
Resource depth:	Not known	
Location		
OS sheet reference:	SP 04 NE	
National grid ref:	405602, 249368	
Resource description:		
Resource description:	4 th terrace (Ailstone) sand and gravel deposit. No exposures.	
Assessment of resource for the second consultation on MLP (Autumn 2013)		
Commentary:	A medium-sized resource area with small-scale dispersed development across the resource area. The deposit extends under the village of Harvington, this section of the deposit is considered separately as resource area 5/13a.	
Crude estimate of resource:	Depth not known.	
Conclusion:	Significant. Consider in defining areas of search.	
Assessment of resource for the Third Stage consultation on MLP (Spring 2015)		
Additional information	A 32ha site covering part of this resource area was submitted by the landowner the Diocese of Worcester, this also extends into resource area 5/13a and beyond the mapped resource areas. No geological information was provided with the site submission, although it was stated that full 32 ha site might contain 575,000 tonnes of terrace deposit.	
Revised estimate of resource:	No change to the assessment.	
Conclusion:	Significant.	

Overview		
Resource number:	5/13a	
Resource name:	Harvington a)	
Resource area:	25ha	
Resource depth:	Not known	
Location		
OS sheet reference:	SP 04 NE	
National grid ref:	405487, 249110	
Resource description:		
Resource description:	4 th terrace (Ailstone) sand and gravel deposit. No exposures.	
Assessment of resource for the second consultation on MLP (Autumn 2013)		
Commentary:	A small resource area which is compromised by the village of Harvington. The deposit extends both north east and south west of the village, these sections of the deposit are considered as resource area 5/13.	
Crude estimate of resource:	Depth not known.	
Conclusion:	Compromised by development.	
Assessment of resource for the Third Stage consultation on MLP (Spring 2015)		
Additional information	A 32ha site covering part of this resource area was submitted by the landowner the Diocese of Worcester, this also extends into resource area 5/13 and beyond the mapped resource areas. No geological information was provided with the site submission, although it was stated that full 32 ha site might contain 575,000 tonnes of terrace deposit.	
Revised estimate of resource:	No change to the assessment.	
Conclusion:	Compromised by development.	

Overview		
Resource number:	5/14	
Resource name:	Aldington Lodge	
Resource area:	32ha	
Resource depth:	Not known	
Location		
OS sheet reference:	SP 04 SE	
National grid ref:	405342, 244413	
Resource description:		
Resource description:	4 th terrace (Ailstone) sand and gravel. No exposures or depth information available.	
Assessment of resource for the second consultation on MLP (Autumn 2013)		
Commentary:	A small deposit intersected by the A46 and a railway line. The area intersected by the railway lines is not considered as part of the resource area.	
Crude estimate of resource:	Depth not known.	
Conclusion:	Not significant: Small deposit with no information to estimate the resource in this area. Not for consideration in defining areas of search.	
Assessment of resource for the Third Stage consultation on MLP (Spring 2015)		
Revised estimate of resource:	No change to the assessment.	
Conclusion:	Not significant.	

Overview		
Resource number:	5/15	
Resource name:	West of Harvington Brook	
Resource area:	22ha	
Resource depth:	Not known	
Location		
OS sheet reference:	SP 04 NE	
National grid ref:	405567, 247804	
Resource description:		
Resource description:	2 nd terrace (Wasperton) sand and gravel. Reported to be a reddish brown stoney loam. No exposures.	
Assessment of resource for the second consultation on MLP (Autumn 2013)		
Commentary:	A small deposit with limited development on the western edge.	
Crude estimate of resource:	Depth not known.	
Conclusion:	Not significant: Small deposit with no information to estimate the resource in this area. Not for consideration in defining areas of search.	
Assessment of resource for the Third Stage consultation on MLP (Spring 2015)		
Revised estimate of resource:	No change to the assessment.	
Conclusion:	Not significant.	

Overview		
Resource number:	5/16	
Resource name:	South east of Harvington	
Resource area:	118ha	
Resource depth:	Estimated 3m	
Location		
OS sheet reference:	SP 04 NE	
National grid ref:	406319, 248299	
Resource description:		
Resource description:	<p>1st terrace (Bretford) sand and gravel. The BGS memoirs estimate the deposit to be up to 3m thick, consisting of gravelly loam with varying amounts of reddish sand.</p> <p>(Estimated resource depth based BGS estimated depth of 3m)</p>	
Assessment of resource for the second consultation on MLP (Autumn 2013)		
Commentary:	<p>A medium-sized resource area, with small-scale dispersed development across the resource area and intersected by the A46 at the northern end. The northern end of the resource area contains fishing ponds which may have been formed following the extraction of sand and gravel.</p>	
Crude estimate of resource:	<p>Area: 118ha x average depth: 3m / 2 Estimated resource volume: 1,770,000 m³ Estimated resource tonnage (at 2 t/m³): 3,540,000 tonnes</p>	
Conclusion:	<p>Significant – key resource. Use to define areas of search.</p>	
Assessment of resource for the Third Stage consultation on MLP (Spring 2015)		
Revised estimate of resource:	<p>Area: 118ha x average depth: 3m / 2 Estimated resource volume: 1,770,000 m³ Estimated resource tonnage (at 1.65 t/m³): 2,920,500 tonnes</p>	
Conclusion:	<p>Significant – key resource.</p>	

Overview	
Resource number:	5/17
Resource name:	Offenham
Resource area:	216ha
Resource depth:	2.4m
Location	
OS sheet reference:	SP 04 NE
National grid ref:	405930, 246396
Resource description:	
Resource description:	<p>2nd terrace (Wasperton) sand and gravel. An old pit south-west of Offenham formerly exposed 0.9m of soil with pebbles, 0.2m of yellow sand, 0.9m of gravel with seams of red clay, 0.2m of fine sand, 0.9m of gravel, 0.2m of yellow sand on blue lias (total 2.4m of sand and gravel). The gravel contains many bunter and flint pebbles together with Jurassic limestone.</p> <p>(Estimated resource depth based on old pit south-west of Offenham showing depth of 2.4m)</p>
Assessment of resource for the second consultation on MLP (Autumn 2013)	
Commentary:	<p>A large resource area with small-scale dispersed development across the resource area. The deposit continues to the south and west of this resource area where it is overlain by Offenham Village, this section of the deposit is considered separately as resource area 5/17a.</p>
Crude estimate of resource:	<p>Area: 216ha x average depth: 2.4m / 2 Estimated resource volume: 2,592,000m³ Estimated resource tonnage (at 2 t/m³): 5,184,000 tonnes</p>
Conclusion:	<p>Significant – key resource. Use to define areas of search.</p>
Assessment of resource for the Third Stage consultation on MLP (Spring 2015)	
Revised estimate of resource:	<p>Area: 216ha x average depth: 2.4m / 2 Estimated resource volume: 2,592,000m³ Estimated resource tonnage (at 1.65 t/m³): 4,276,800 tonnes</p>
Conclusion:	<p>Significant – key resource.</p>

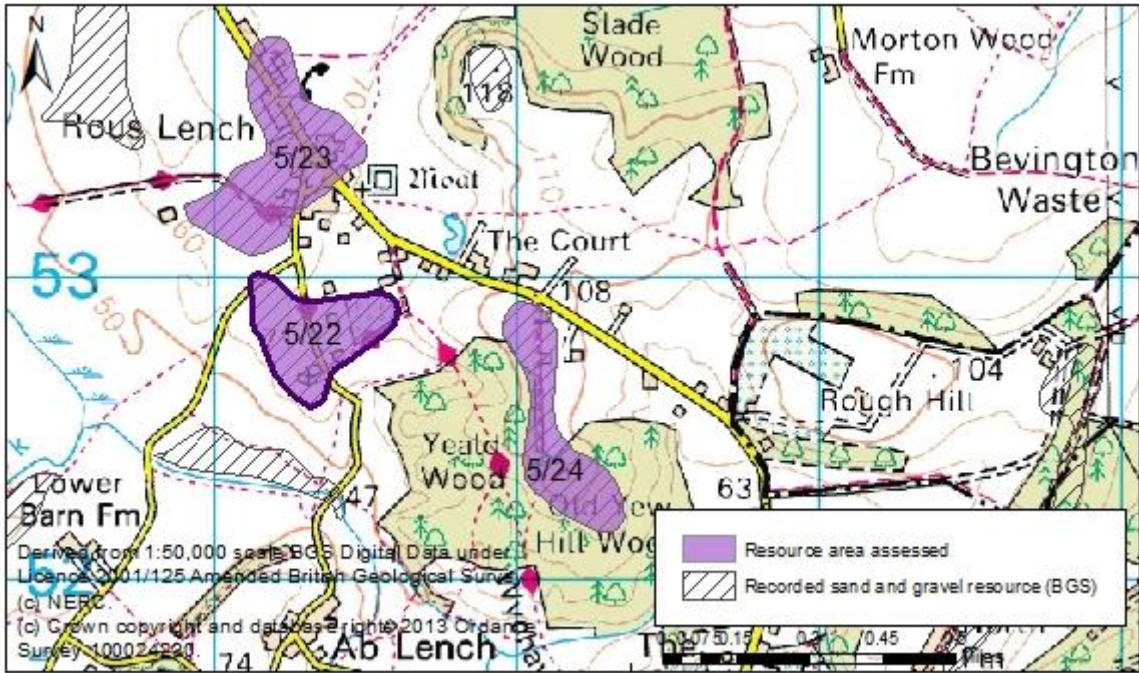
Overview	
Resource number:	5/17a
Resource name:	Offenham a)
Resource area:	71ha
Resource depth:	2.4m
Location	
OS sheet reference:	SP 04 NE
National grid ref:	405436, 245899
Resource description:	
Resource description:	<p>2nd terrace (Wasperton) sand and gravel. An old pit south-west of Offenham formerly exposed 0.9m of soil with pebbles, 0.2m of yellow sand, 0.9m of gravel with seams of red clay, 0.2m of fine sand, 0.9m of gravel, 0.2m of yellow sand on blue lias (total 2.4m of sand and gravel). The gravel contains many bunter and flint pebbles together with Jurassic limestone.</p> <p>(Estimated resource depth based on old pit south-west of Offenham showing depth of 2.4m)</p>
Assessment of resource for the second consultation on MLP (Autumn 2013)	
Commentary:	A medium-sized resource area compromised by the village of Offenham. The deposit continues to the north and east of Offenham, this section of the deposit is considered separately as resource area 5/17.
Crude estimate of resource:	<p>Area: 71 ha x average depth: 2.4m / 2</p> <p>Estimated resource volume: 852,000 m³</p> <p>Estimated resource tonnage (at 2 t/m³): 1,704,000 tonnes</p>
Conclusion:	Compromised by development.
Assessment of resource for the Third Stage consultation on MLP (Spring 2015)	
Revised estimate of resource:	<p>Area: 71 ha x average depth: 2.4m / 2</p> <p>Estimated resource volume: 852,000 m³</p> <p>Estimated resource tonnage (at 1.65 t/m³): 1,405,800 tonnes</p>
Conclusion:	Compromised by development.


Overview		
Resource number:	5/18	
Resource name:	South of Offenham	
Resource area:	26 Ha	
Resource depth:	Not known	
Location		
OS sheet reference:	SP 04 NE, SP 04 SE	
National grid ref:	405498, 244999	
Resource description:		
Resource description:	2 nd terrace (Wasperton) sand and gravel deposit. No exposures.	
Assessment of resource for the second consultation on MLP (Autumn 2013)		
Commentary:	A small deposit with small-scale dispersed development across the resource area.	
Crude estimate of resource:	Depth not known.	
Conclusion:	Not significant: Small deposit with no information to estimate the resource in this area. Not for consideration in defining areas of search.	
Assessment of resource for the Third Stage consultation on MLP (Spring 2015)		
Revised estimate of resource:	No change to the assessment.	
Conclusion:	Not significant.	

Overview	
Resource number:	5/19
Resource name:	Bengeworth
Resource area:	25ha
Resource depth:	Not known
Location	
OS sheet reference:	SP 04 SE
National grid ref:	405148, 243545
Resource description:	
Resource description:	4 th terrace (Ailstone) sand and gravel deposit. No information on depth available.
Assessment of resource for the second consultation on MLP (Autumn 2013)	
Commentary:	Small deposit, with significant development across the resource area. Less than 10ha not compromised by development.
Crude estimate of resource:	Depth not known
Conclusion:	Compromised by development.
Assessment of resource for the Third Stage consultation on MLP (Spring 2015)	
Revised estimate of resource:	No change to the assessment.
Conclusion:	Compromised by development.

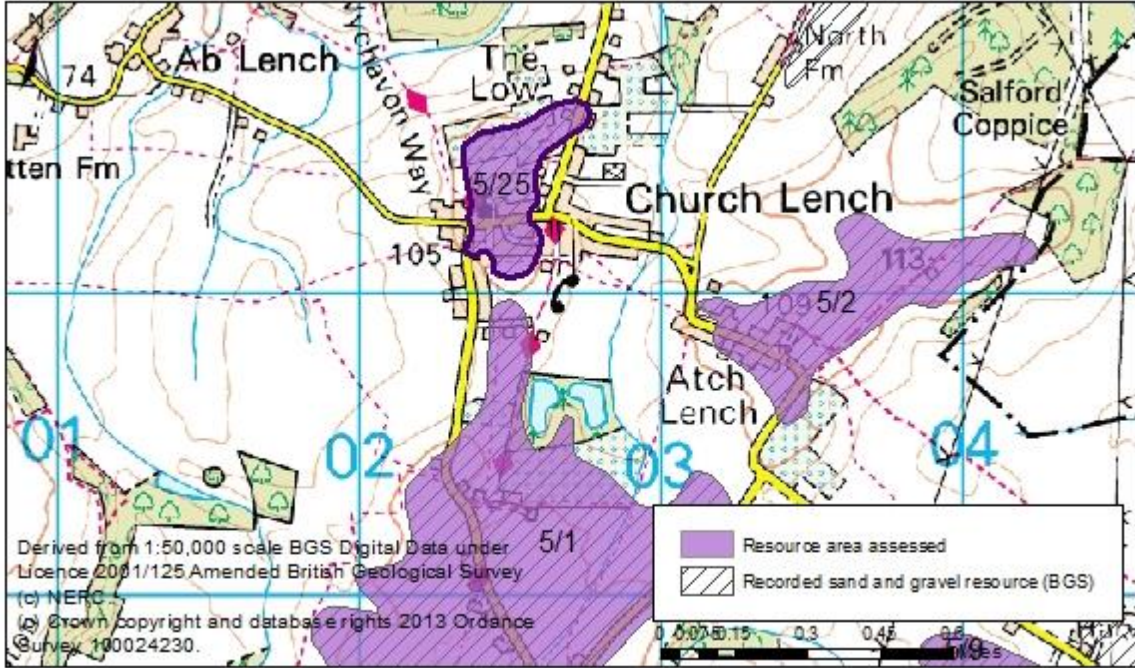
Overview		
Resource number:	5/20	
Resource name:	Knowle Hill	
Resource area:	12ha	
Resource depth:	Not known	
Location		
OS sheet reference:	SP 04 SE	
National grid ref:	406078, 243270	
Resource description:		
Resource description:	4 th river terrace (Ailstone) sand and gravel. No information on depth available.	
Assessment of resource for the second consultation on MLP (Autumn 2013)		
Commentary:	A small narrow deposit with small-scale dispersed development across the resource area.	
Crude estimate of resource:	Depth not known.	
Conclusion:	Not significant: Small deposit with no information to estimate the resource in this area. Not for consideration in defining areas of search.	
Assessment of resource for the Third Stage consultation on MLP (Spring 2015)		
Revised estimate of resource:	No change to the assessment.	
Conclusion:	Not significant.	

Overview	
Resource number:	5/21
Resource name:	Cleeve Prior
Resource area:	10ha
Resource depth:	Not known
Location	
OS sheet reference:	SP 05 SE
National grid ref:	408030, 250412
Resource description:	
Resource description:	1 st terrace (Bretford) sand and gravel. No information on depth available.
Assessment of resource for the second consultation on MLP (Autumn 2013)	
Commentary:	A small deposit with no significant development.
Crude estimate of resource:	Depth not known.
Conclusion:	Not significant: Small deposit with no information to estimate the resource in this area. Not for consideration in defining areas of search.
Assessment of resource for the Third Stage consultation on MLP (Spring 2015)	
Revised estimate of resource:	No change to the assessment.
Conclusion:	Not significant.

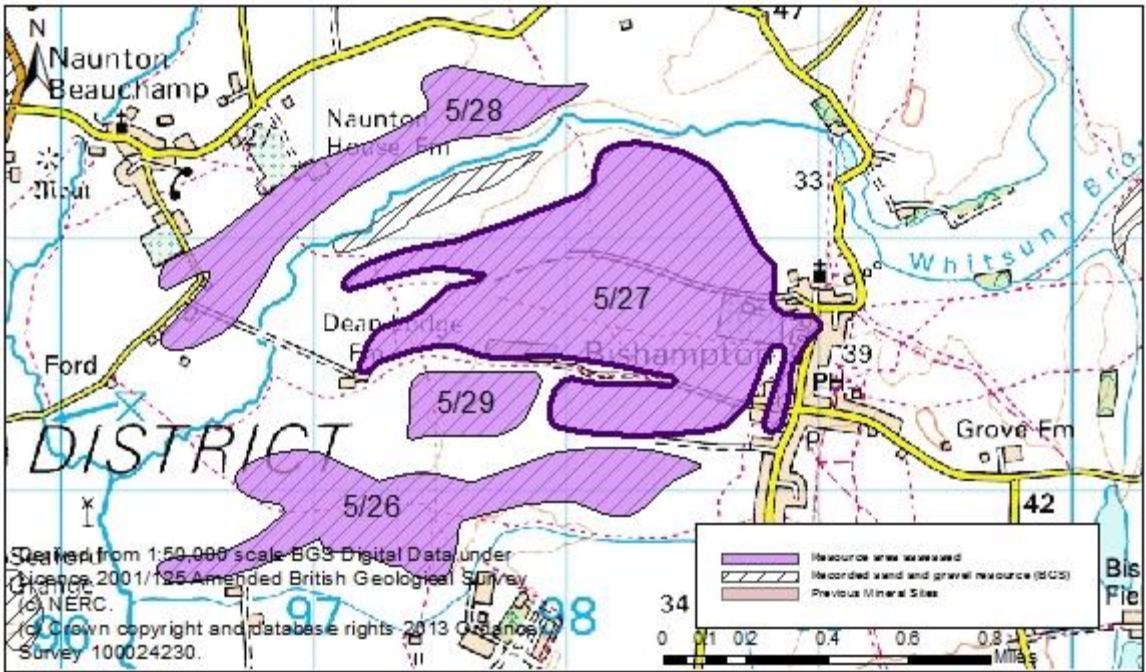
Overview	
Resource number:	5/22
Resource name:	South of Rous Lench
Resource area:	12ha
Resource depth:	Not known
Location	
OS sheet reference:	SP 05 SW
National grid ref:	401330, 252813
	
Resource description:	
Resource description:	4 th terrace (Ailstone) sand and gravel. Gravelly sandy soil. May be of fluvio-glacial origin. No exposures or information on depth available.
Assessment of resource for the second consultation on MLP (Autumn 2013)	
Commentary:	Small deposit, with small-scale dispersed development across the resource area.
Crude estimate of resource:	Depth not known.
Conclusion:	Not significant: Small deposit with no information to estimate the resource in this area. Not for consideration in defining areas of search.
Assessment of resource for the Third Stage consultation on MLP (Spring 2015)	
Revised estimate of resource:	No change to the assessment.
Conclusion:	Not significant.

Overview	
Resource number:	5/23
Resource name:	Rous Lench
Resource area:	19ha
Resource depth:	Not known
Location	
OS sheet reference:	SP 05 SW
National grid ref:	401209, 253394
	
Resource description:	
Resource description:	4 th terrace (Ailstone) sand and gravel. Gravelly sandy soil. May be of fluvio-glacial origin. No exposures or information on depth available.
Assessment of resource for the second consultation on MLP (Autumn 2013)	
Commentary:	A small deposit, almost entirely compromised by Rous Lench village.
Crude estimate of resource:	Depth not known.
Conclusion:	Not significant: Small deposit with no information to estimate the resource in this area. Not for consideration in defining areas of search.
Assessment of resource for the Third Stage consultation on MLP (Spring 2015)	
Revised estimate of resource:	No change to the assessment.
Conclusion:	Not significant.

Overview	
Resource number:	5/24
Resource name:	Old Yew Hill Wood
Resource area:	12ha
Resource depth:	Not known
Location	
OS sheet reference:	SP 05 SW
National grid ref:	402128, 252490
Resource description:	
Resource description:	A glaciofluvial deposit of sand and gravel. No exposures or information on depth available.
Assessment of resource for the second consultation on MLP (Autumn 2013)	
Commentary:	A small narrow deposit partially compromised by development.
Crude estimate of resource:	Depth not known
Conclusion:	Not significant: Small deposit with no information to estimate the resource in this area. Not for consideration in defining areas of search.
Assessment of resource for the Third Stage consultation on MLP (Spring 2015)	
Revised estimate of resource:	No change to the assessment.
Conclusion:	Not significant.

Overview		
Resource number:	ECA 5/25	
Resource name:	Church Lench	
Resource area:	13ha	
Resource depth:	Not known	
Location		
OS sheet reference:	SP 05 SW	
National grid ref:	402507, 251359	
Resource description:		
Resource description:	Glaciofluvial deposit of sand and gravel. No exposures.	
Assessment of resource for the second consultation on MLP (Autumn 2013)		
Commentary:	Small deposit, a large proportion of which is compromised by the village of Church Lench.	
Crude estimate of resource:	Depth not known.	
Conclusion:	Compromised by development with less than 10ha of the deposit remaining.	
Assessment of resource for the Third Stage consultation on MLP (Spring 2015)		
Revised estimate of resource:	No change to the assessment.	
Conclusion:	Compromised by development.	

Overview		
Resource number:	5/26	
Resource name:	North of Throckmorton	
Resource area:	51ha	
Resource depth:	Not known	
Location		
OS sheet reference:	SO 95 SE	
National grid ref:	397413, 250942	
Resource description:		
Resource description:	2 nd terrace (Wasperton) sand and gravel. No information on depth available.	
Assessment of resource for the second consultation on MLP (Autumn 2013)		
Commentary:	A medium-sized deposit with no built development in the resource area.	
Crude estimate of resource:	Depth not known.	
Conclusion:	Significant. Consider in defining areas of search.	
Assessment of resource for the Third Stage consultation on MLP (Spring 2015)		
Revised estimate of resource:	No change to the assessment.	
Conclusion:	Significant.	

Overview	
Resource number:	5/27
Resource name:	Gunnings Lane
Resource area:	115ha
Resource depth:	Not known
Location	
OS sheet reference:	SO 95 SE
National grid ref:	398193, 251766
	
Resource description:	
Resource description:	2 nd terrace (Wasperton) sand and gravel. No information on depth available.
Assessment of resource for the second consultation on MLP (Autumn 2013)	
Commentary:	A medium-sized deposit with small-scale development on the periphery of the resource area.
Crude estimate of resource:	Depth not known.
Conclusion:	Significant. Consider in defining areas of search.
Assessment of resource for the Third Stage consultation on MLP (Spring 2015)	
Revised estimate of resource:	No change to the assessment.
Conclusion:	Significant.

Overview		
Resource number:	ECA 5/28	
Resource name:	Naunton House Farm	
Resource area:	38ha	
Resource depth:	Not known	
Location		
OS sheet reference:	SO 95 SE	
National grid ref:	397108, 252189	
Resource description:		
Resource description:	2 nd terrace (Wasperton) sand and gravel. No information on depth available.	
Assessment of resource for the second consultation on MLP (Autumn 2013)		
Commentary:	A small deposit with small-scale development on the periphery of the resource area.	
Crude estimate of resource:	Depth not known.	
Conclusion:	Not significant: Small deposit with no information to estimate the resource in this area. Not for consideration in defining areas of search.	
Assessment of resource for the Third Stage consultation on MLP (Spring 2015)		
Revised estimate of resource:	No change to the assessment.	
Conclusion:	Not significant.	

Overview		
Resource number:	ECA 5/29	
Resource name:	East of Dean Lodge Farm	
Resource area:	12ha	
Resource depth:	Not known	
Location		
OS sheet reference:	SO 95 SE	
National grid ref:	397614, 251352	
Resource description:		
Resource description:	2 nd terrace (Wasperton) sand and gravel. No information on depth available.	
Assessment of resource for the second consultation on MLP (Autumn 2013)		
Commentary:	A small deposit with no built development in the resource area.	
Crude estimate of resource:	Depth not known	
Conclusion:	Not significant: Small deposit with no information to estimate the resource in this area. Not for consideration in defining areas of search.	
Assessment of resource for the Third Stage consultation on MLP (Spring 2015)		
Revised estimate of resource:	No change to the assessment.	
Conclusion:	Not significant.	