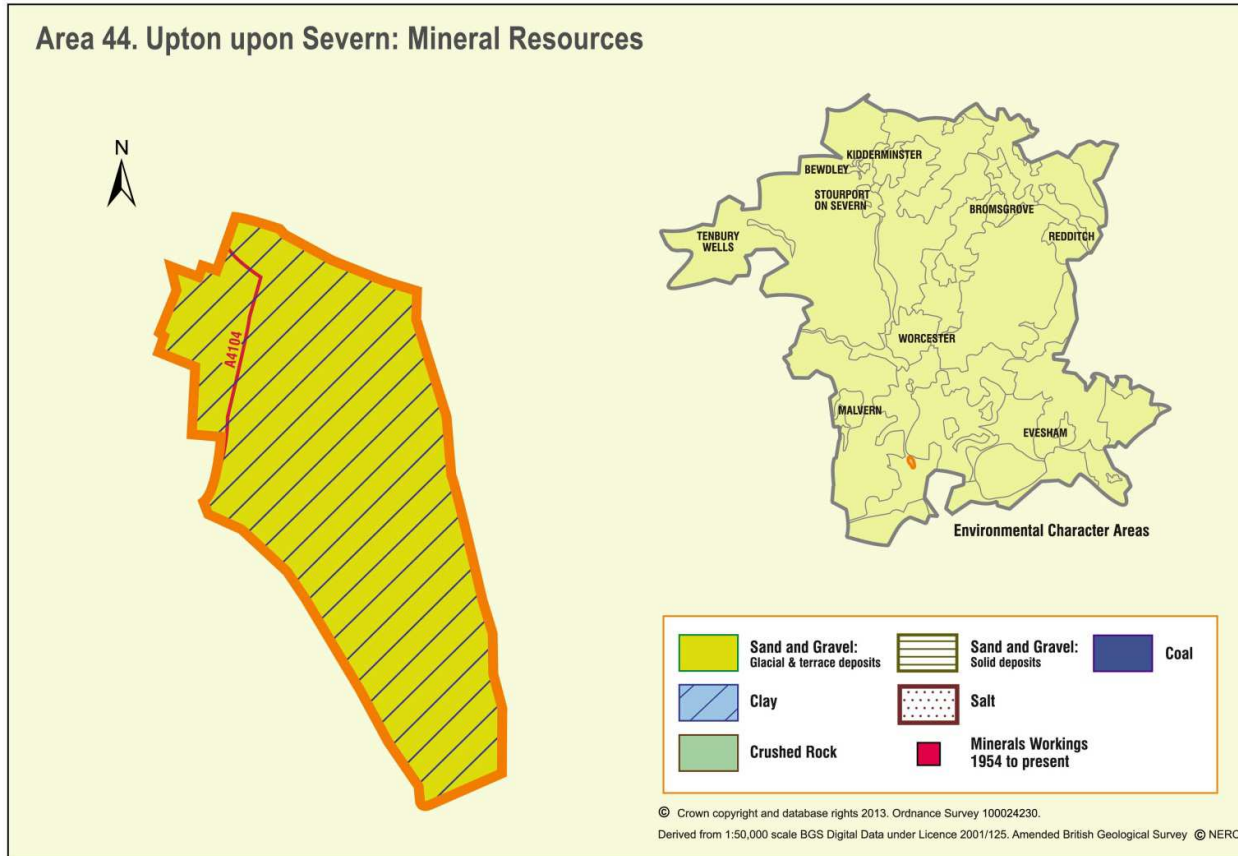


## Appendix 44: Analysis of aggregate resources in Area 44: Upton upon Severn



### ECA Summary for the Fourth Stage consultation on MLP (Winter 2018):

#### Sand and gravel

There are no resource areas identified in Upton upon Severn for sand and gravel. The sand and gravel deposits in this area are assessed as part of ECA 19 (Longdon Hinterland) as resource area 19/2a.

#### Crushed rock

There are no resource areas identified in Upton upon Severn area for crushed rock.

#### Non-aggregates

BGS data indicates that there are no non-aggregate mineral deposits in this area.