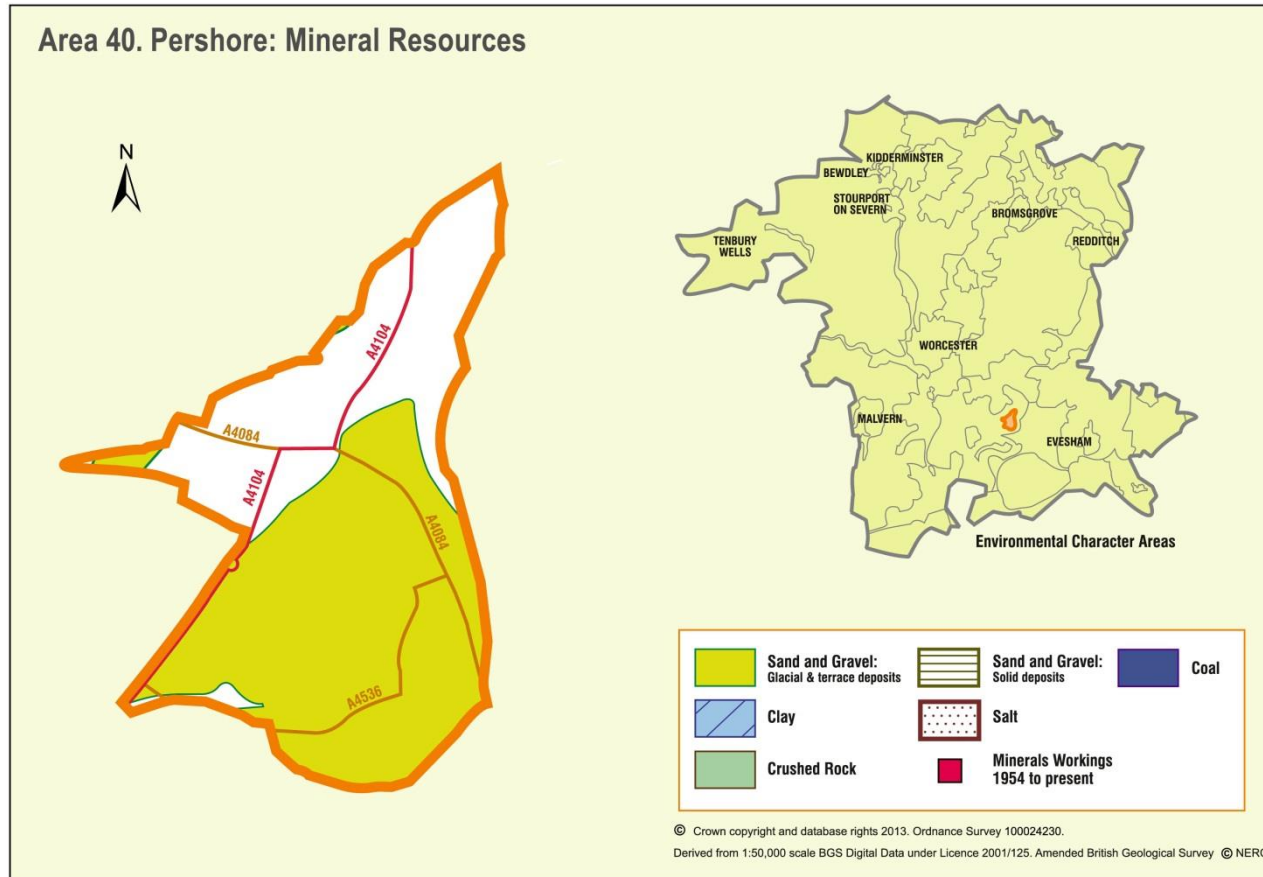


Appendix 40: Analysis of aggregate resources in Area 40: Pershore



ECA Summary for the Third Stage consultation on MLP (Spring 2015):

Sand and gravel

There are 2 resource areas identified for sand and gravel in Pershore area:

- Not significant: 1
- Compromised: 1

Crushed rock

There are no resource areas identified in Pershore area for crushed rock.

Non-aggregates

BGS data indicates that there are no non-aggregate mineral deposits in this area.

Overview of resource assessment for ECA 40

Sand and gravel resource areas:

| Resource number* | Second Stage Consultation | | Third Stage Consultation | |
|------------------|--|-----------------|--|-----------------|
| | Original estimated resource tonnage (2 tonnes/m ³) | Significance | Revised estimate of resource tonnage (1.65 tonnes/m ³) | Significance |
| 40/1 | Depth unknown | Compromised | Depth unknown | Compromised |
| 40/2 | Depth unknown | Not significant | Depth unknown | Not significant |

| | |
|---|---|
| Overview | |
| Resource number: | 40/1 |
| Resource name: | Pershore North |
| Resource area: | 119 ha |
| Resource depth: | Not known |
| Location | |
| OS sheet reference: | SO 94 NW & SO 94 NE |
| National grid ref: | 394562, 245606 |
| | |
| Resource description: | |
| Resource description: | 1 st river terrace (Bretford) and 2 nd river terrace (Wasperton) sand and gravel. No exposures. |
| Assessment of resource for the second consultation on MLP (Autumn 2013) | |
| Commentary: | A medium deposit, completely compromised by the settlement of Pershore. |
| Crude estimate of resource: | Depth not known. |
| Conclusion: | Compromised by development. |
| Assessment of resource for the Third Stage consultation on MLP (Spring 2015) | |
| Revised estimate of resource: | No change to the assessment. |
| Conclusion: | Compromised by development. |

| | | |
|---|---|--|
| Overview | | |
| Resource number: | 40/2 | |
| Resource name: | Pershore South | |
| Resource area: | 16 ha | |
| Resource depth: | Not known | |
| Location | | |
| OS sheet reference: | SO 94 NW & SO 94 SW | |
| National grid ref: | 394793, 245054 | |
| Resource description: | | |
| Resource description: | 1 st river terrace (Bretford) sand and gravel. No exposures. | |
| Assessment of resource for the second consultation on MLP (Autumn 2013) | | |
| Commentary: | A small deposit, with allotments across much of the resource area. | |
| Crude estimate of resource: | Depth not known. | |
| Conclusion: | Not significant: Small deposit with no information to estimate the resource in this area. Not for consideration in defining areas of search. | |
| Assessment of resource for the Third Stage consultation on MLP (Spring 2015) | | |
| Revised estimate of resource: | No change to the assessment. | |
| Conclusion: | Not significant. | |