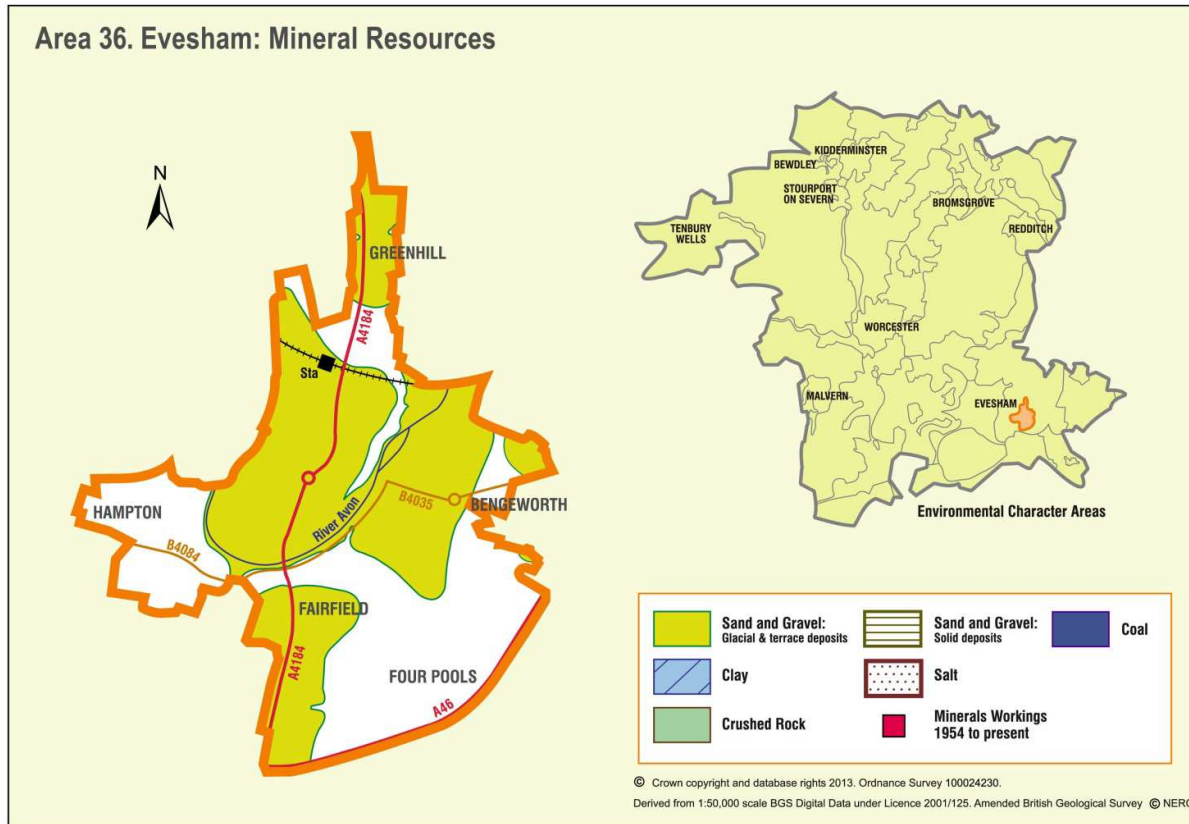


## Appendix 36: Analysis of aggregate resources in Area 36: Evesham



### ECA Summary for the Fourth Stage consultation on MLP (Winter 2018):

#### Sand and gravel

There are 3 resource areas identified for sand and gravel in Evesham Area:

- Not significant: 1
- Compromised: 2

#### Crushed rock

There are no resource areas identified in Evesham Area for crushed rock.

#### Non-aggregates

BGS data indicates that there are no non-aggregate mineral deposits in this Area.

## Overview of resource assessment for ECA 36

### Sand and gravel resource areas:

Resource number*	Second Stage Consultation		Third Stage Consultation		Fourth Stage Consultation		
	Original estimated resource tonnage (2 tonnes/m <sup>3</sup> )	Significance	Revised estimate of resource tonnage (1.65 tonnes/m <sup>3</sup> )	Significance	New resource number (where resource has been split)	Revised estimate of resource tonnage (1.65 tonnes/m <sup>3</sup> )	Result
36/1	Depth unknown	Not significant	Depth unknown	Not significant	Not reassessed		
36/2	Depth unknown	Compromised	Depth unknown	Compromised			
36/3	Depth unknown	Compromised	Depth unknown	Compromised			

<b>Overview</b>	
<b>Resource number:</b>	36/1
<b>Resource name:</b>	East Hampton Ferry
<b>Resource area:</b>	36ha
<b>Resource depth:</b>	Not known.
<b>Location</b>	
<b>OS sheet reference:</b>	SP 04 SW
<b>National grid ref:</b>	403278, 243724
<b>Resource description:</b>	
<b>Resource description:</b>	2 <sup>nd</sup> terrace (Wasperton) sand and gravel deposit. No exposures.
<b>Assessment of resource for the second consultation on MLP (Autumn 2013)</b>	
<b>Commentary:</b>	A small deposit. This resource area lies to the south of Evesham. There is small-scale dispersed development across the resource area.
<b>Crude estimate of resource:</b>	Depth not known.
<b>Conclusion:</b>	Not significant: Small deposit with no information to estimate the resource in this area. Not for consideration in defining areas of search.
<b>Assessment of resource for the Third Stage consultation on MLP (Spring 2015)</b>	
<b>Revised estimate of resource:</b>	No change to the assessment.
<b>Conclusion:</b>	Not significant.
<b>Assessment of resource for the Fourth Stage consultation on MLP (August 2018)</b>	
Not reassessed due to resource not being classified as Key or Significant in the Third Stage Consultation	

<b>Overview</b>		
<b>Resource number:</b>	36/2	
<b>Resource name:</b>	Evesham west	
<b>Resource area:</b>	73ha	
<b>Resource depth:</b>	Not known	
<b>Location</b>		
<b>OS sheet reference:</b>	SP 04 SW	
<b>National grid ref:</b>	430661, 244109	
<b>Resource description:</b>		
<b>Resource description:</b>	3 <sup>rd</sup> terrace (New Inn) sand and gravel deposits. No exposures.	
<b>Assessment of resource for the second consultation on MLP (Autumn 2013)</b>		
<b>Commentary:</b>	This resource area is completely compromised by the settlement of Evesham.	
<b>Crude estimate of resource:</b>	Depth not known.	
<b>Conclusion:</b>	Compromised by development.	
<b>Assessment of resource for the Third Stage consultation on MLP (Spring 2015)</b>		
<b>Revised estimate of resource:</b>	No change to the assessment.	
<b>Conclusion:</b>	Compromised by development.	
<b>Assessment of resource for the Fourth Stage consultation on MLP (August 2018)</b>		
Not reassessed due to resource not being classified as Key or Significant in the Third Stage Consultation		

<b>Overview</b>		
<b>Resource number:</b>	36/3	
<b>Resource name:</b>	Evesham east	
<b>Resource area:</b>	66ha	
<b>Resource depth:</b>	Not known	
<b>Location</b>		
<b>OS sheet reference:</b>	SP 04 SE	
<b>National grid ref:</b>	404389, 243572	
<b>Resource description:</b>		
<b>Resource description:</b>	2 <sup>nd</sup> terrace (Wasperton) sand and gravel deposit. No exposures.	
<b>Assessment of resource for the second consultation on MLP (Autumn 2013)</b>		
<b>Commentary:</b>	This resource area is completely compromised by the settlement of Evesham.	
<b>Crude estimate of resource:</b>	Depth not known.	
<b>Conclusion:</b>	Compromised by development.	
<b>Assessment of resource for the Third Stage consultation on MLP (Spring 2015)</b>		
<b>Revised estimate of resource:</b>	No change to the assessment.	
<b>Conclusion:</b>	Compromised by development.	
<b>Assessment of resource for the Fourth Stage consultation on MLP (August 2018)</b>		
Not reassessed due to resource not being classified as Key or Significant in the Third Stage Consultation		