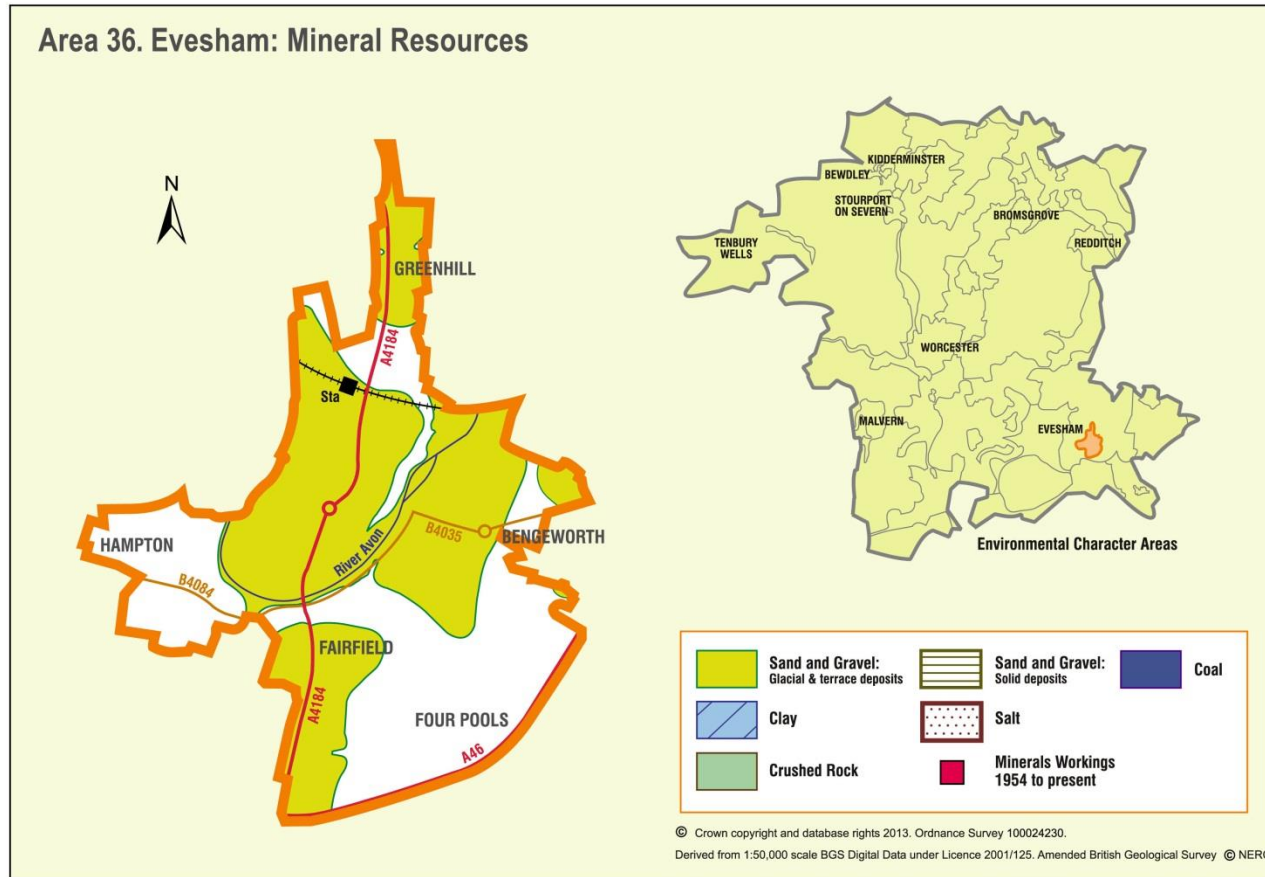


Appendix 36: Analysis of aggregate resources in Area 36: Evesham



ECA Summary for the Third Stage consultation on MLP (Spring 2015):

Sand and gravel

There are 3 resource areas identified for sand and gravel in Evesham Area:

- Not significant: 1
- Compromised: 2

Crushed rock

There are no resource areas identified in Evesham Area for crushed rock.

Non-aggregates

BGS data indicates that there are no non-aggregate mineral deposits in this Area.

Overview of resource assessment for ECA 36

Sand and gravel resource areas:

Resource number*	Second Stage Consultation		Third Stage Consultation	
	Original estimated resource tonnage (2 tonnes/m ³)	Significance	Revised estimate of resource tonnage (1.65 tonnes/m ³)	Significance
36/1	Depth unknown	Not significant	Depth unknown	Not significant
36/2	Depth unknown	Compromised	Depth unknown	Compromised
36/3	Depth unknown	Compromised	Depth unknown	Compromised

Overview		
Resource number:	36/1	
Resource name:	East Hampton Ferry	
Resource area:	36ha	
Resource depth:	Not known.	
Location		
OS sheet reference:	SP 04 SW	
National grid ref:	403278, 243724	
Resource description:		
Resource description:	2 nd terrace (Wasperton) sand and gravel deposit. No exposures.	
Assessment of resource for the second consultation on MLP (Autumn 2013)		
Commentary:	A small deposit. This resource area lies to the south of Evesham. There is small-scale dispersed development across the resource area.	
Crude estimate of resource:	Depth not known.	
Conclusion:	Not significant: Small deposit with no information to estimate the resource in this area. Not for consideration in defining areas of search.	
Assessment of resource for the Third Stage consultation on MLP (Spring 2015)		
Revised estimate of resource:	No change to the assessment.	
Conclusion:	Not significant.	

Overview	
Resource number:	36/2
Resource name:	Evesham west
Resource area:	73ha
Resource depth:	Not known
Location	
OS sheet reference:	SP 04 SW
National grid ref:	430661, 244109
Resource description:	
Resource description:	3 rd terrace (New Inn) sand and gravel deposits. No exposures.
Assessment of resource for the second consultation on MLP (Autumn 2013)	
Commentary:	This resource area is completely compromised by the settlement of Evesham.
Crude estimate of resource:	Depth not known.
Conclusion:	Compromised by development.
Assessment of resource for the Third Stage consultation on MLP (Spring 2015)	
Revised estimate of resource:	No change to the assessment.
Conclusion:	Compromised by development.

Overview		
Resource number:	36/3	
Resource name:	Evesham east	
Resource area:	66ha	
Resource depth:	Not known	
Location		
OS sheet reference:	SP 04 SE	
National grid ref:	404389, 243572	
Resource description:		
Resource description:	2 nd terrace (Wasperton) sand and gravel deposit. No exposures.	
Assessment of resource for the second consultation on MLP (Autumn 2013)		
Commentary:	This resource area is completely compromised by the settlement of Evesham.	
Crude estimate of resource:	Depth not known.	
Conclusion:	Compromised by development.	
Assessment of resource for the Third Stage consultation on MLP (Spring 2015)		
Revised estimate of resource:	No change to the assessment.	
Conclusion:	Compromised by development.	