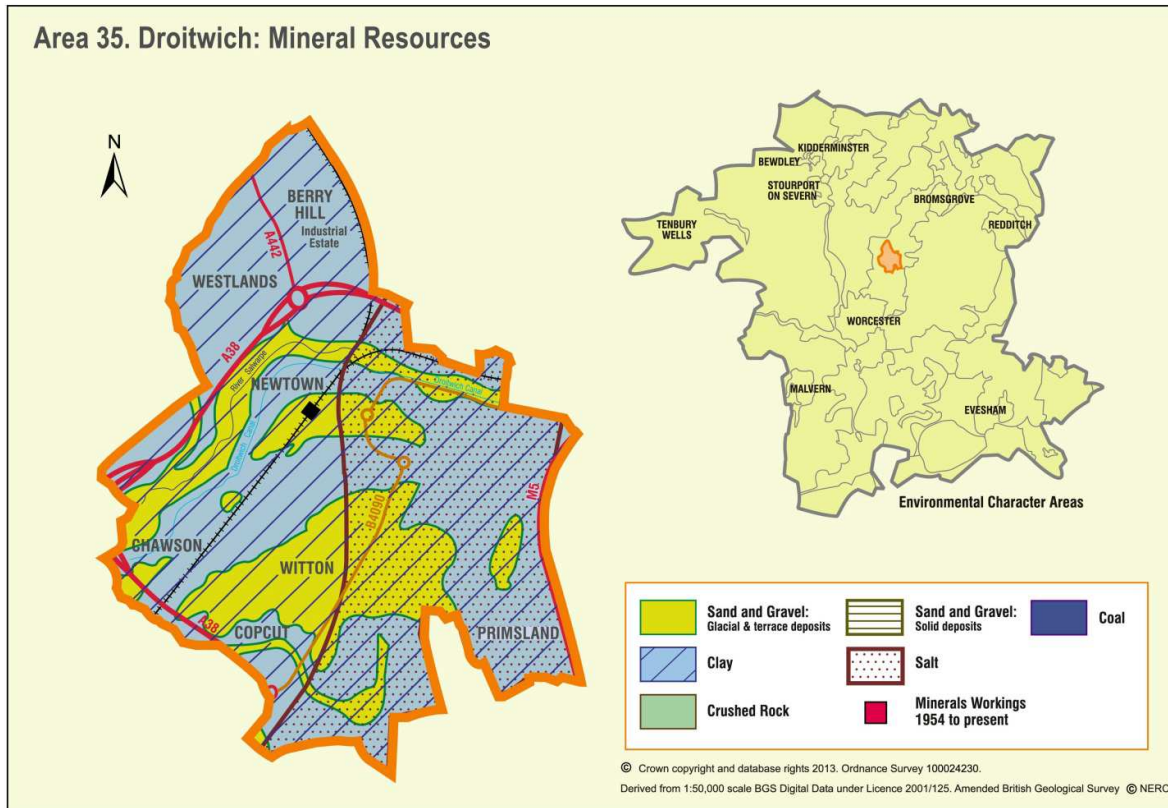


Appendix 35: Analysis of aggregate resources in Area 35: Droitwich



ECA Summary for the Third Stage consultation on MLP (Winter 2018):

Sand and gravel

There are 2 resource areas identified for sand and gravel in Droitwich area:

- Compromised: 2

Crushed rock

There are no resource areas identified in Droitwich area for crushed rock.

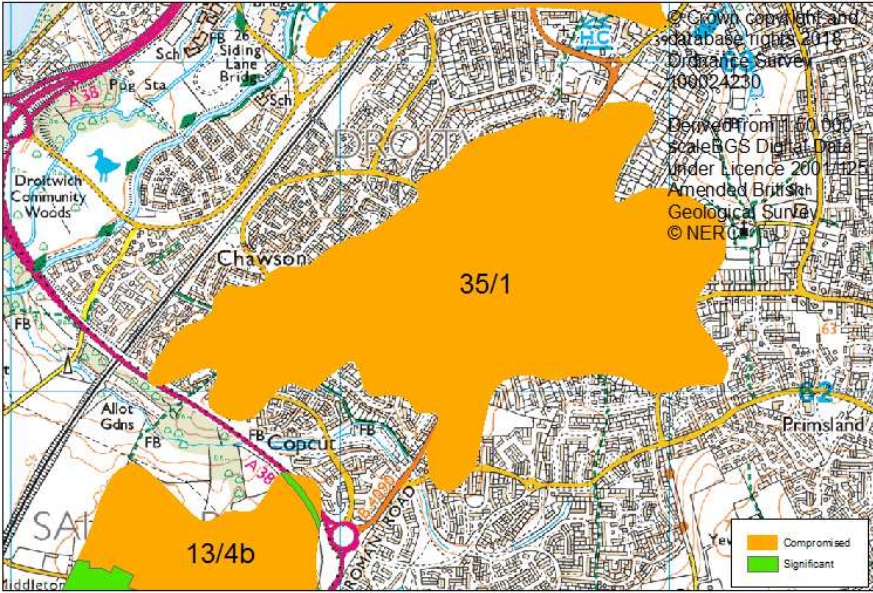
Non-aggregates

BGS data indicates that there are deposits of clay and salt in this area.

Overview of resource assessment for ECA 35

Sand and gravel resource areas:

Resource number*	Second Stage Consultation		Third Stage Consultation		Fourth Stage Consultation		
	Original estimated resource tonnage (2 tonnes/m ³)	Significance	Revised estimate of resource tonnage (1.65 tonnes/m ³)	Significance	New resource number (where resource has been split)	Revised estimate of resource tonnage (1.65 tonnes/m ³)	Result
35/1	2,970,000	Compromised	2,450,250	Compromised	Not reassessed		
35/2	Depth unknown	Compromised	Depth unknown	Compromised			

Overview	
Resource number:	35/1
Resource name:	Witton
Resource area:	99ha
Resource depth:	Estimated 3m
Location	
OS sheet reference:	SO 86 SE
National grid ref:	389432, 262311
	
Resource description:	
Resource description:	4 th terrace (Kidderminster Station) sand and gravel. The BGS memoirs record that the deposit varies in grade from gravel to sand and its thickness is believed to range from 1-5m. Estimated resource depth based on midpoint of BGS range: 3m
Assessment of resource for the second consultation on MLP (Autumn 2013)	
Commentary:	A medium-sized resource area overlain by the settlement of Droitwich.
Crude estimate of resource:	Area: 99ha x average depth: 3m ÷ 2 Estimated resource volume: 1,485,000m ³ Estimated resource tonnage (at 2 t/m³): 2,970,000 tonnes
Conclusion:	Compromised by development.
Assessment of resource for the Third Stage consultation on MLP (Spring 2015)	
Revised estimate of resource:	Area: 99ha x average depth: 3m ÷ 2 Estimated resource volume: 1,485,000m ³ Estimated resource tonnage (at 1.65 t/m³): 2,450,250 tonnes
Conclusion:	Compromised by development.
Assessment of resource for the Fourth Stage consultation on MLP (August 2018)	
Not reassessed due to resource not being classified as Key or Significant in the Third Stage Consultation	

Overview	
Resource number:	35/2
Resource name:	Newtown
Resource area:	24ha
Resource depth:	Not known
Location	
OS sheet reference:	SO 86 SE
National grid ref:	389425, 263251
Resource description:	
Resource description:	3 rd terrace (Holt Heath) sand and gravel. No information on thicknesses available.
Assessment of resource for the second consultation on MLP (Autumn 2013)	
Commentary:	A small resource area overlain by the settlement of Droitwich.
Crude estimate of resource:	Depth not known
Conclusion:	Compromised by development.
Assessment of resource for the Third Stage consultation on MLP (Spring 2015)	
Revised estimate of resource:	No change to the assessment.
Conclusion:	Compromised by development.
Assessment of resource for the Fourth Stage consultation on MLP (August 2018)	
Not reassessed due to resource not being classified as Key or Significant in the Third Stage Consultation	