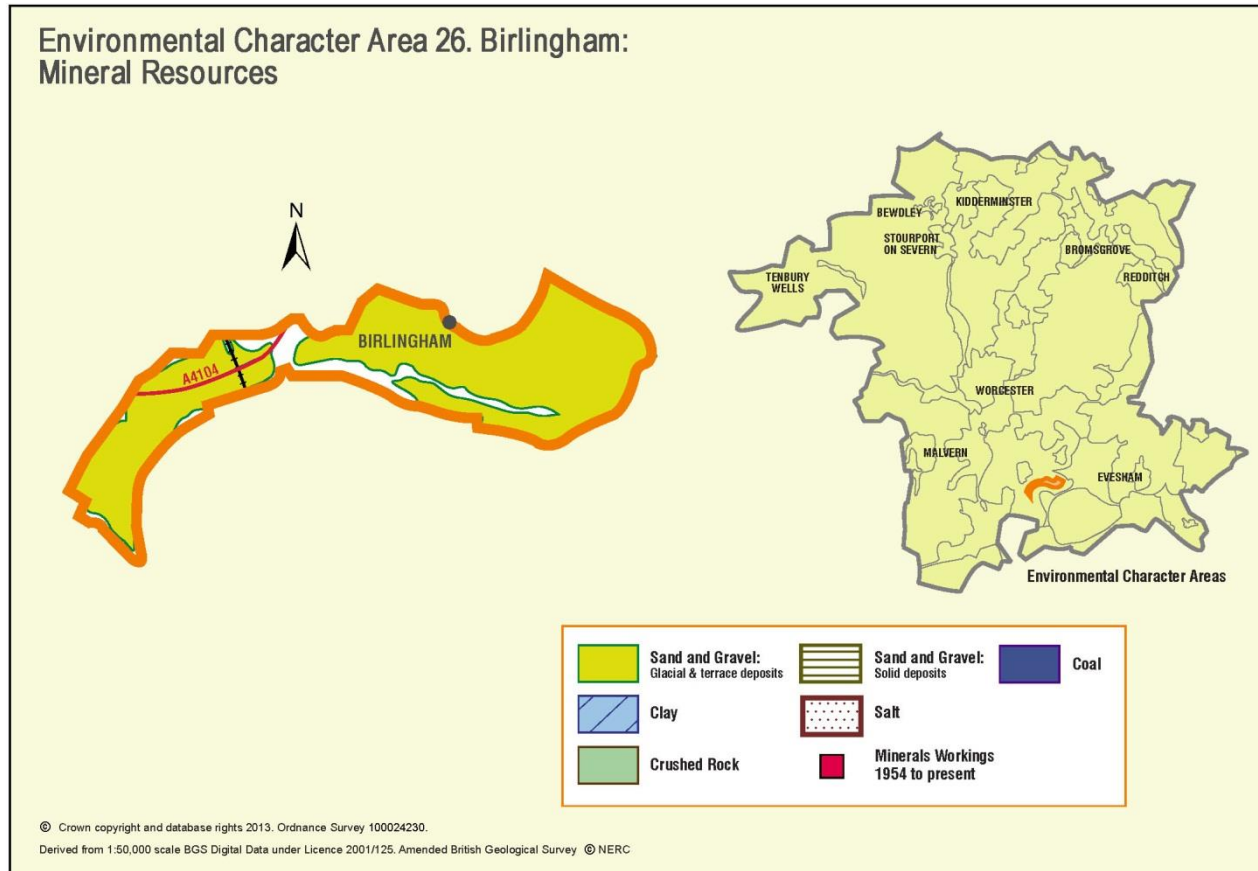


Appendix 26: Analysis of aggregate resources in ECA 26: Birlingham



ECA Summary for the Third Stage consultation on MLP (Spring 2015):

Sand and gravel

There are 2 resource areas identified for sand and gravel in Birlingham ECA:

- Key: 2

Crushed rock

There are no resource areas identified in Birlingham ECA for crushed rock.

Non-aggregates

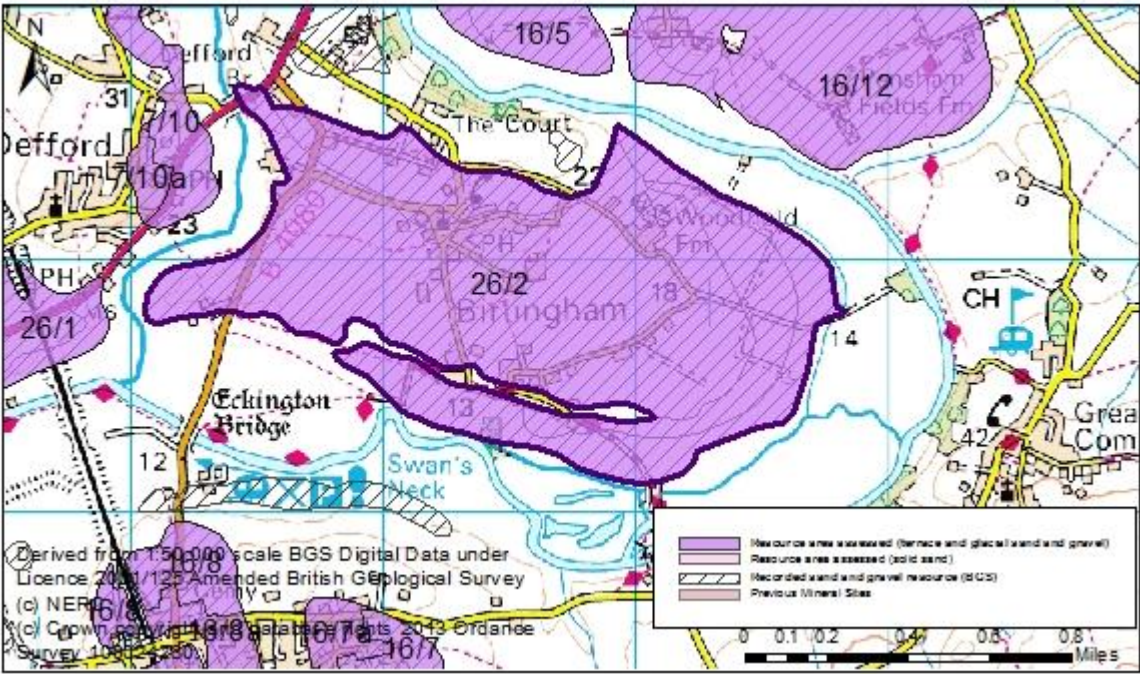
BGS data indicates that there are no non-aggregate mineral deposits in Birlingham ECA.

Overview of resource assessment for ECA 26

Sand and gravel resource areas:

Resource number*	Second Stage Consultation		Third Stage Consultation	
	Original estimated resource tonnage (2 tonnes/m ³)	Significance	Revised estimate of resource tonnage (1.65 tonnes/m ³)	Significance
26/1	2,997,000	Key	2,472,525	Key
26/2	8,399,000	Key	6,929,175	Key

Overview	
Resource number:	26/1
Resource name:	Elm Lodge Farm, Woodmancote
Resource area:	81ha
Resource depth:	Estimated 3.7m
Location	
OS sheet reference:	SO 94 SW
National grid ref:	391038, 242308
Resource description:	
Resource description:	A 2 nd river terrace sand and gravel (Wasperton) deposit. A borehole at the northern of the terrace recorded 3.7m sand and gravel beneath 1.2m overburden. (Estimated resource depth 3.7m)
Assessment of resource for the second consultation on MLP (Autumn 2013)	
Commentary:	A medium deposit, intersected by railway line in the east and roads across the centre of the resource area.
Crude estimate of resource:	Area: 81 ha x average depth: 3.7m ÷ 2 Estimated resource volume: 1,498,500 m ³ Estimated resource tonnage (at 2 t/m³): 2,997,000 tonnes
Conclusion:	Significant – key resource. Use to define areas of search.
Assessment of resource for the Third Stage consultation on MLP (Spring 2015)	
Revised estimate of resource:	Area: 81 ha x average depth: 3.7m ÷ 2 Estimated resource volume: 1,498,500 m ³ Estimated resource tonnage (at 1.65 t/m³): 2,472,525 tonnes
Conclusion:	Significant – key resource.

Overview	
Resource number:	26/2
Resource name:	Birlingham
Resource area:	227 ha
Resource depth:	3.7 m
Location	
OS sheet reference:	SO 94 SW
National grid ref:	393568, 242860
	
Resource description:	
Resource description:	2 nd river terrace (Wasperton), 3 rd river terrace (New Inn) sand and gravel deposits. Part of this resource is from the Bretford member. A borehole in the 2 nd terrace (in resource area 26/1 to the west) recorded 3.7m sand and gravel beneath 1.2m overburden. (Estimated resource depth 3.7m)
Assessment of resource for the second consultation on MLP (Autumn 2013)	
Commentary:	A large deposit, intersected by railway line in the east and roads across the centre of the resource area.
Crude estimate of resource:	Area: 227 ha x average depth: 3.7m ÷ 2 Estimated resource volume: 4,199,500 m ³ Estimated resource tonnage (at 2 t/m³): 8,399,000 tonnes
Conclusion:	Significant – key resource. Use to define areas of search.
Assessment of resource for the Third Stage consultation on MLP (Spring 2015)	
Revised estimate of resource:	Area: 227 ha x average depth: 3.7m ÷ 2 Estimated resource volume: 4,199,500 m ³ Estimated resource tonnage (at 1.65 t/m³): 6,929,175 tonnes
Conclusion:	Significant – key resource.