

## Other Suggested Walks and Rides

### Shakespeare's Avon Way

235 km / 88 miles

Beginning at the source of the Avon in Naseby, Northamptonshire, this 88 mile fully way marked path follows as near as possible the course of the river. Using existing public footpaths, bridleways and a few minor roads, Shakespeare's Avon Way meanders through the picturesque countryside of Northamptonshire, Warwickshire, Worcestershire and Gloucestershire to reach its' confluence with the Severn at Tewkesbury.

<http://shakespearesavonway.org/>



### Millennium Way

161 km / 100 miles

Experience the delights of the three beautiful Shire counties of Warwickshire, Worcestershire and Northamptonshire. Enjoy the rural setting of the Borough of Solihull with its fine houses, leafy lanes and historic buildings. Visit the Church of All Saints at Middleton Cheney with its famous ceiling painting from 1865. Ramble through Meriden - the centre of England, and drink in the memories at the Bridge at Pershore - scene of Civil War skirmishes. Savour the delights and history of the castles of Warwick and Kenilworth and much more.

<http://walking.41club.org/>



### Cotswold Way

164 km / 102 miles

The Cotswold Way is a long distance walking Trail that runs between the market town of Chipping Campden in the north and the city of Bath in the south.

The Trail is 102 miles (164 km) long, and runs for most of its length on the Cotswold escarpment. It passes through many picturesque villages and close to a significant number of historic sites, for example the Roman heritage at Bath, the Neolithic burial chamber at Belas Knap, Sudeley Castle near Winchcombe, Hailes Abbey and many beautiful churches and historic houses.

<http://www.nationaltrail.co.uk/Cotswold/>



A series of short, easy to follow walks on and from the Cotswold Way have been designed to guide you smoothly along the National Trail in a series of bit-sized chunks. Each route is designed to be as approachable and convenient as possible – whether you arrive by bus, car or on foot, they all benefit from the high quality standards followed by National Trails across the country.

<http://www.nationaltrail.co.uk/Cotswold/text.asp?PageId=54>

### **Geopark Way**

175 km / 109 miles

A route devised to highlight geology, landscape and associated heritage by linking geological sites in the Abberley and Malvern Hills Geopark. Starting in the town of Bridgnorth, Shropshire, on the banks of the River Severn, the Geopark Way heads south passing through the Wyre Forest before reaching Hartlebury common and then onto the Malvern Hills. Famed for their impressive geological age, around 700 million years old, the Malvern Hills offer dramatic views across the surrounding landscape. Into Gloucestershire the trail passes over May Hill, before entering into Huntley Quarry Geological Reserve. The final leg of the trail leads you over relatively flat plains before arriving at its final destination of Gloucester cathedral.

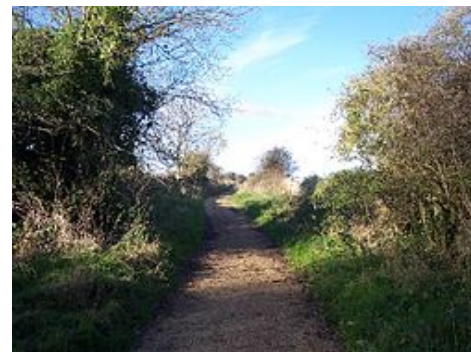


[http://www.ldwa.org.uk/ldp/members/show\\_path.php?path\\_name=Geopark+Way](http://www.ldwa.org.uk/ldp/members/show_path.php?path_name=Geopark+Way)

### **Sabrina Way**

327 km / 203 miles

The Sabrina Way is part of the National Bridleroute Network, developed by The British Horse Society and partner local authorities. It runs from the Claude Duval Bridleroute at Great Barrington in Gloucestershire through five counties to Derbyshire, and provides a link between the Ridgeway and the Pennine Bridleway.



[http://www.ldwa.org.uk/ldp/members/show\\_path.php?path\\_name=Sabrina+Way](http://www.ldwa.org.uk/ldp/members/show_path.php?path_name=Sabrina+Way)

### **Monarchs Way**

990 km / 615 miles

This long distance walk (615 miles) using footpaths and bridleways closely follows the route taken by Charles and enables you to visit many historic sites and buildings, maybe only previously known to you through the history books. It also takes you through two World Heritage Sites, one National Park and six Areas of Outstanding Natural Beauty plus some of the finest scenery in western and southern England.



<http://www.monarchsway.50megs.com/>

## Other Walking, Riding & Cycling Links

[www.ldwa.org.uk](http://www.ldwa.org.uk)

<http://www.bhs.org.uk/>

## Permissive Access

The Countryside Stewardship, Environmentally Sensitive Areas and Environmental Stewardship Schemes help farmers and land managers protect and improve the English landscape and its wildlife.

These schemes also provide permissive access for you to visit these areas to enjoy the results. The access route is usually available for a number of years, but you will need to check the 'access ends' date on each site.

- Some walks are long and vigorous.
- Others are a quiet family stroll.
- Some include features of special interest - such as wildlife or historic remains.
- Some are circular routes.
- Others are simply to a good picnic spot or viewpoint.

Many walks link with existing Rights of Way; some provide new bridle paths and paths suitable for the less mobile.

<http://cwr.naturalengland.org.uk/default.aspx?County=WORCESTERSHIRE>

Every effort has been made to keep the information on this site up-to-date. However, the countryside is continually changing and this may affect the areas you visit. Circumstances occasionally alter the public access available; in the interests of safety and conservation an area may be closed for short periods.

Please note: Worcestershire County Council is not responsible for the content of external sites.