

# Worcestershire Health & Well-being Board

## Joint Strategic Needs Assessment Briefing on Teenage Pregnancy

Information Lead: Liz Altay

Version: 1.0

Prepared By: Jan Harvey

Date: May 2019

Review Date: May 2022

### Summary

Teenage pregnancy is a significant public health issue in England. Most teenage pregnancies are unplanned and around 50% end in an abortion. For some young women having a child when young can represent a positive turning point in their lives, but for many more, bringing up a child is incredibly difficult and often results in poor outcomes for both the teenage parent and the child. These can be poor outcomes in terms of the baby's health, the mother's emotional health and well-being and the likelihood of both the parent and child living in long-term poverty.

Unfortunately, teenage parents are prone to poor antenatal health, lower birthweight babies and higher infant mortality rates. Their health, and that of their children, is likely to be worse than average. Teenage mothers are less likely to finish their education, less likely to find a good job, and more likely to end up both as single parents and bringing up their children in poverty. The children themselves run a much greater risk of poor health, and have a much higher chance of becoming teenage mothers themselves.

- In 2017, there were 123 teenage conceptions in Worcestershire with 70 of these opting for an abortion.
- This means that in 2017, over 50 mothers aged under 18 made the choice to have a child in Worcestershire.
- Higher numbers of teenage conceptions occur in deprived areas.

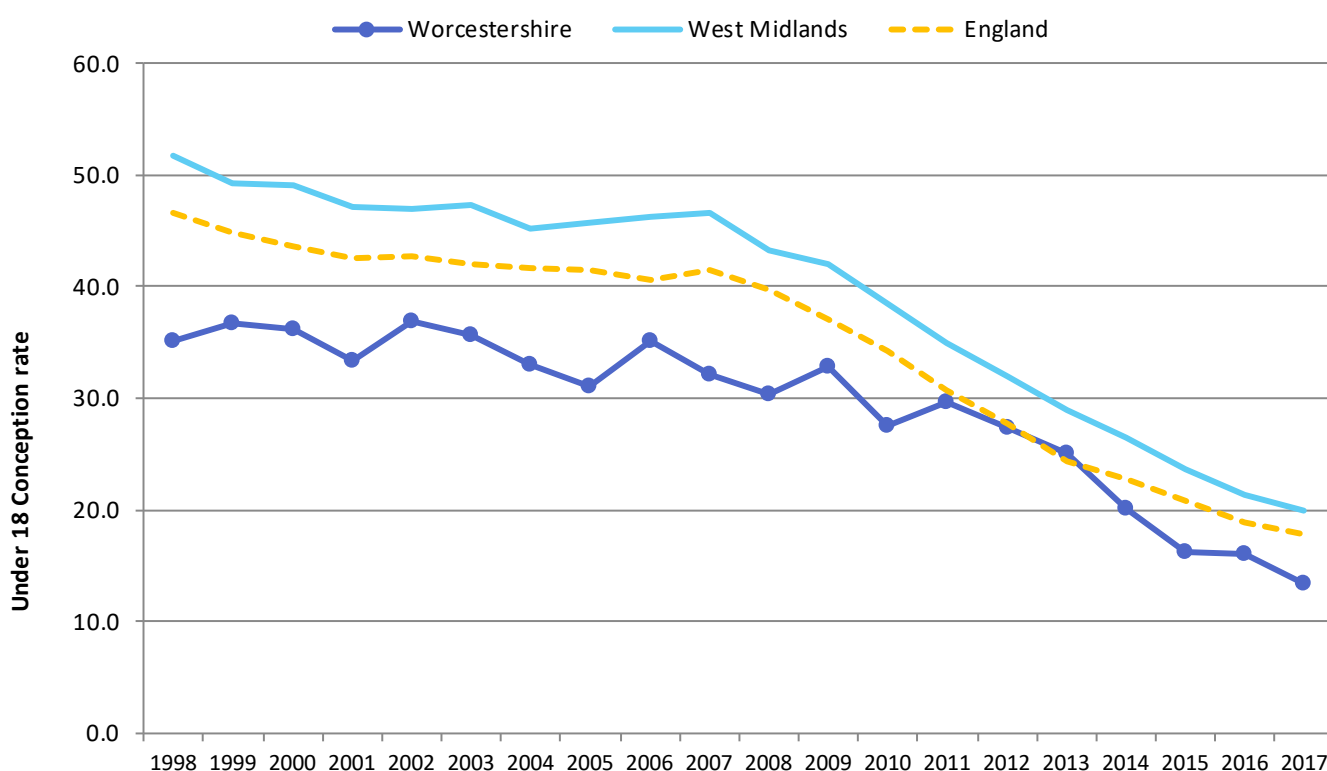
**Data Notes:** Teenage conception rates are calculated using the number of abortions and maternities (live and still) to females aged under 18 at the time of conception per thousand female population aged 15 to 17. The area of residence is derived at the point at which the data is collected i.e. from the birth or Termination of Pregnancy record and this may well have changed since the conception date (up to 9 months previously). Conception statistics do not include miscarriages or illegal abortions.

There is always a slight delay in conceptions data, as it is analysed based on the year of conception using birth registrations and abortion notifications. This means that provisional data will not be released until 14 months after the period ends i.e. data for 2017 was published in April 2019.

### Key Indicator

Key Indicators (*from Public Health Outcomes Framework):	England	West Midlands	Worcestershire	Worcestershire vs England
2.04* - Under 18 Conceptions (Rate of conceptions per 1,000 females aged 15-17) for conceptions occurring in 2017	17.8	19.9	13.4	Statistically significantly lower than the England rate

Figure 1 - Under 18 Conception Rate per Thousand Females Aged 15–17

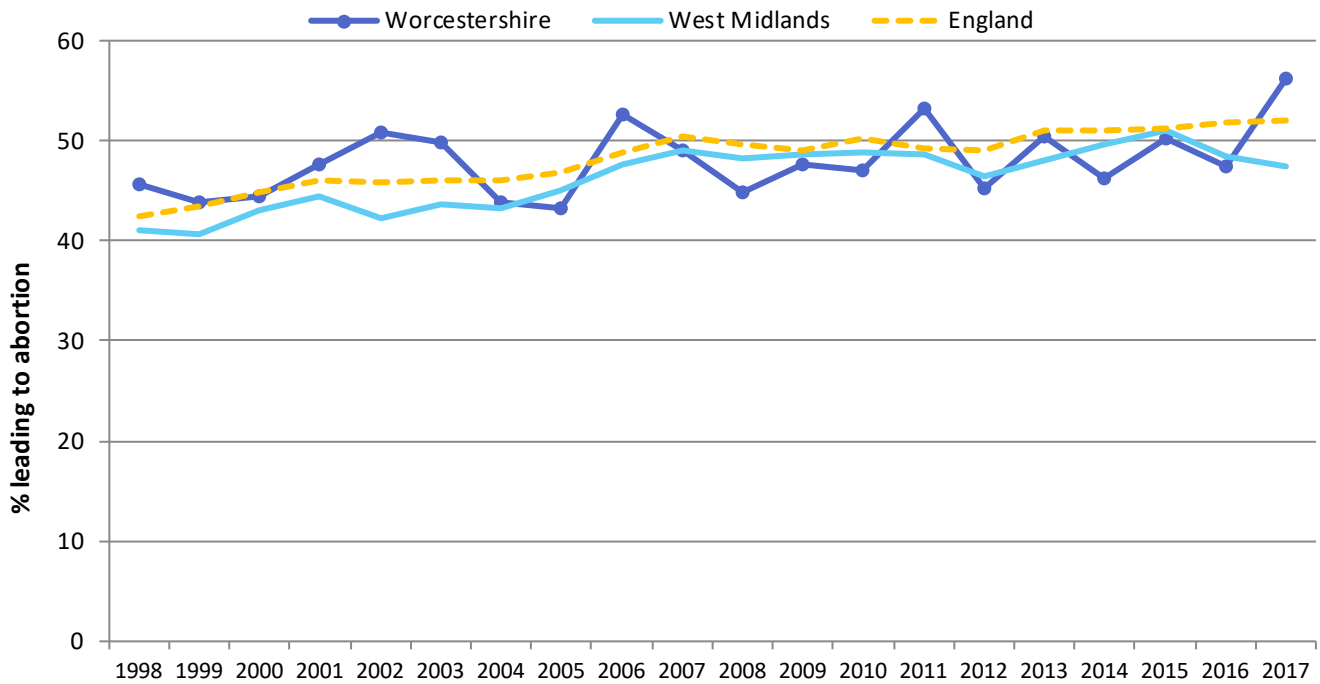


Source: ONS Conception Statistics, 2017

This graph compares the under 18 conception rate for Worcestershire with England and the West Midlands and provides a guide as to relative performance.

In 2017, the rate in Worcestershire is once again statistically significantly lower than England which it hadn't been since 2010. Although the rate in Worcestershire remained lower than England, as the rates get closer the chance that they are statistically significantly different will get much more unlikely.

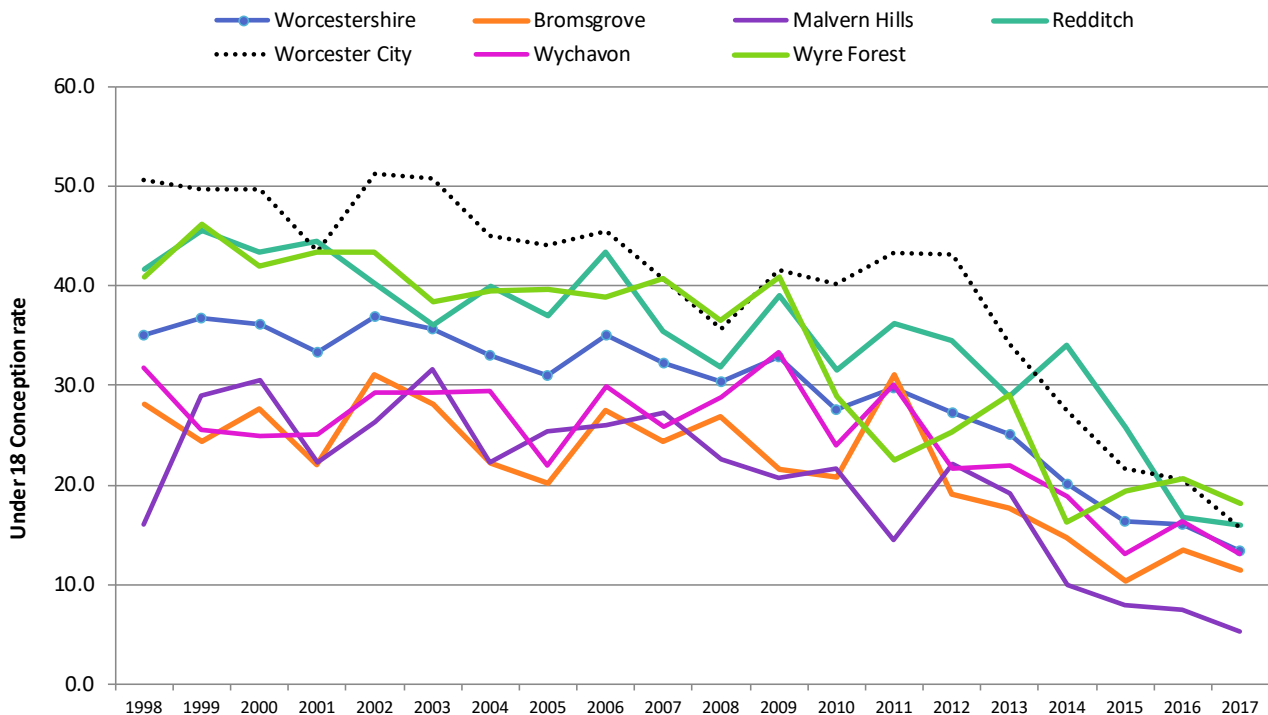
Figure 2 - Outcome of Under 18 Conceptions – Percentage Leading to Abortion



Source: ONS Conception Statistics, 2017

Though the figures are variable from one year to another, there is generally an upward trend in the percentage of teenagers opting for an abortion as an outcome across all areas.

Figure 3 - Under 18 Conception Rate by Council District Area



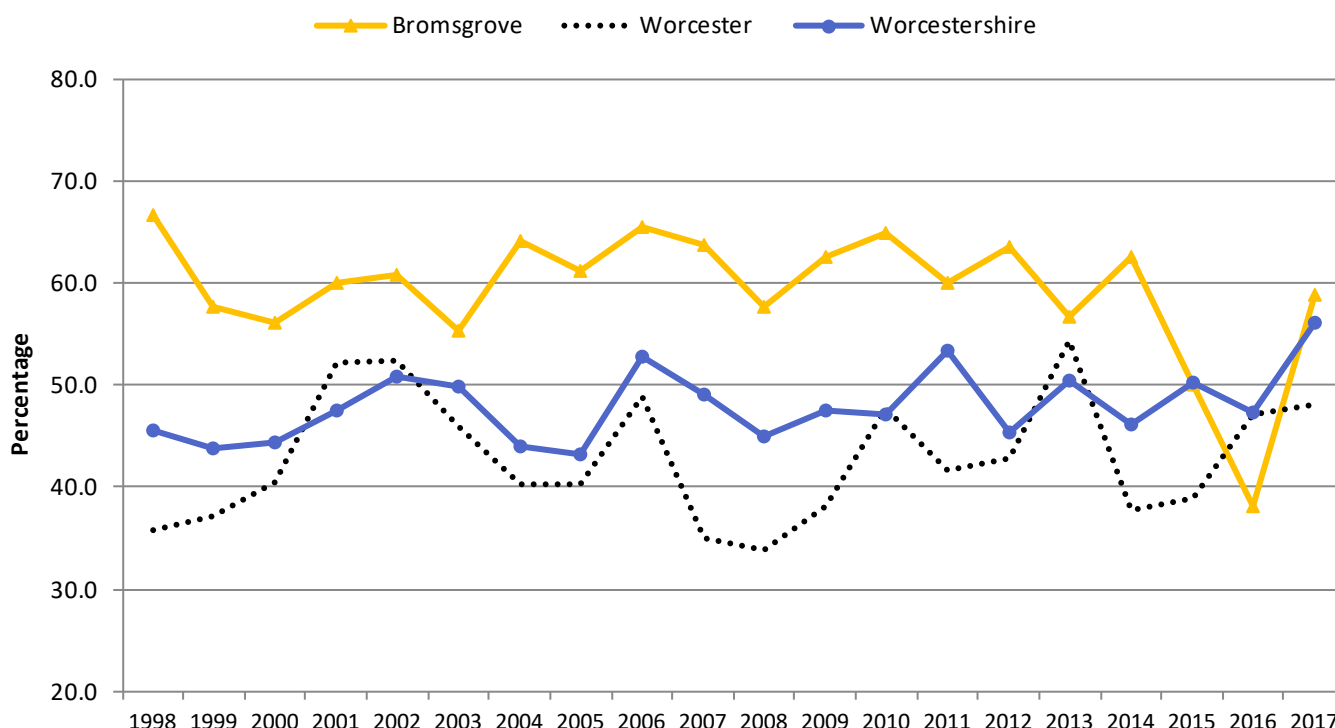
Source: ONS Conception Statistics, 2017

At sub-county level there is large variation. Malvern Hills, Bromsgrove and Wychavon districts have the lowest teenage conception rates.

Worcester, Wyre Forest and Redditch districts have consistently had the highest teenage conception rates across Worcestershire. However, encouragingly, over the last few years their rates have dropped considerably. In Worcester district the rate has more than halved from 43.1 in 2012 to 20.5 in 2016.

Over the last three years, the lowest proportion of teenage conceptions ending in abortion were in Worcester District and the highest proportion was in Wychavon District.

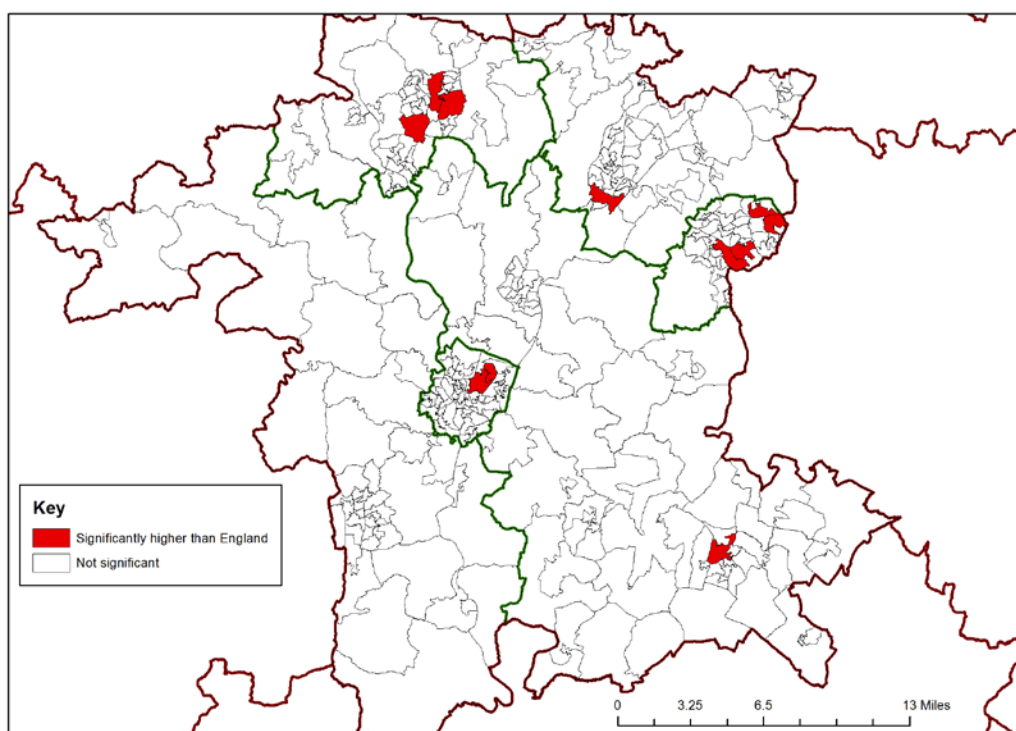
Figure 4 - Outcome of Under 18 Conceptions in Two Districts in Worcestershire Compared to Worcestershire County – Percentage Leading to Abortion



Source: ONS Conception Statistics, 2017

Figure 4 shows the difference in the percentage of teenage conceptions which ended in abortion between residents of Bromsgrove District, which consistently has one of the lowest overall teen conception rates compared with Worcester District which has one of the highest. Interestingly, apart from a slight quirk in 2016, Bromsgrove District has had a much higher percentage of teenage conceptions which ended in abortion compared to Worcester District. In fact, between 1998 and 2014 almost 60% of Bromsgrove District's pregnant teenagers elected to have an abortion compared with 42% in Worcester District. However, this picture has changed over the last couple of years which has also coincided with a large drop in the overall conception rate in Worcester District. These statistics are based on small numbers and should therefore be treated with caution.

Figure 5 - Areas with High Under 18 Conception Rates by Middle Super Output Area (MSOA, 3 years pooled data, 2013–2015)



© Crown copyright and database rights 2018 Ordnance Survey 100024230.

This map and the following table show the Middle Super Output Areas (MSOAs) which have statistically significantly higher rates of under 18 conception than England. Between 2013-2015, there were eleven areas in Worcestershire that had statistically significantly higher rates of under 18 conceptions.

Figure 6 - Middle Super Output Areas (MSOAs) which are Significantly Above the England Rate of Teenage Conceptions in 2013-2015 with Deprivation Rank

LA Area	MSOA Code	Description	2013-15 Significantly higher?	IMD15 Deprivation Rank (National) 1 = most deprived, 6791 = least deprived	IMD15 Deprivation Rank (within Worcestershire) 1= most deprived, 85= least deprived
Bromsgrove	E02006708	Bromsgrove South (Charford & Aston Fields)	Yes	2941	22
Redditch	E02006722	Moons Moat	Yes	1153	8
	E02006725	Winyates Green	Yes	2066	15
	E02006730	Greenlands	Yes	877	5
	E02006731	Headless Cross & Oakenshaw	Yes	3159	27
Worcester	E02006735	Gorse Hill North	Yes	222	1
	E02006738	Brickfields & Tolladine	Yes	676	3
Wychavon	E02006761	Evesham Central	Yes	1647	11
Wyre Forest	E02006770	Kidderminster Central	Yes	814	4
	E02006773	Offmore & Comberton	Yes	2043	14
	E02006775	Oldington & Foley Park	Yes	300	2

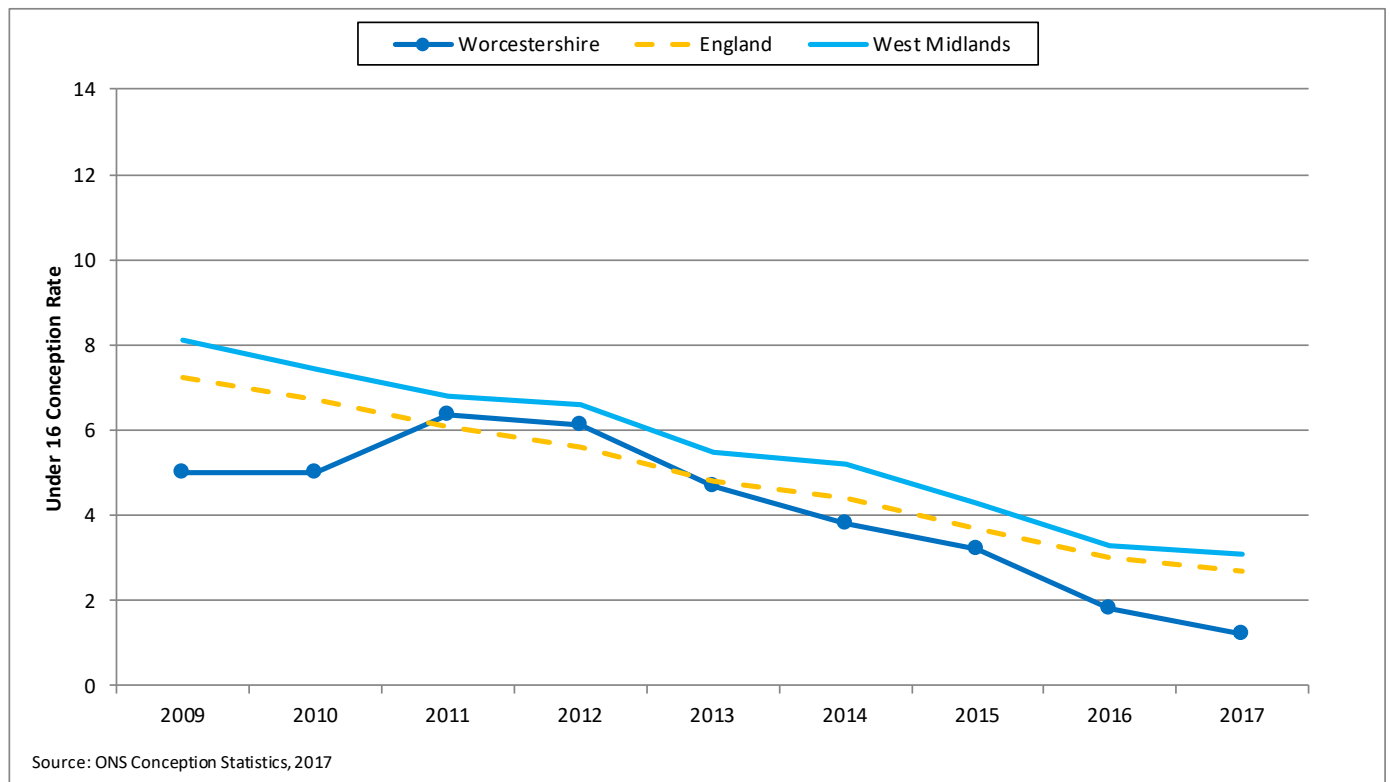
Source: Office for National Statistics (ONS). Index of Multiple Deprivation 2015

This table demonstrates a strong link between teenage conceptions and deprivation. All five of the most deprived MSOAs in Worcestershire appear in the list and all 11 fall within the top third of deprived areas in Worcestershire based on the Index of Multiple Deprivation 2015.

## Under 16 Conception Rates

Over the last eight-year period, Worcestershire generally has had a lower Under 16 Conception Rate than the national average and this rate continues to reduce. However, across Worcestershire, there are still an average of 18 females aged under 16 who conceive each year. The majority of these females elect to have an abortion, nearly 82% in 2017, but this still leaves a number of our population struggling to cope with being a young teenage mother.

Figure 7 - Under 16 Conception Rate per Thousand Females Aged 13–15



## Teenage Mothers

In 2016, the United Kingdom had the 8<sup>th</sup> highest live birth rate in the European Union for females aged under 18 years at 5.7 per thousand aged 15-17. Although disappointing, this is an improvement, as in 2006 the UK was ranked 3<sup>rd</sup> highest after Bulgaria and Romania. Locally, in Worcestershire our rate in 2016 is considerably better at 3.7 per thousand females, however, 15 out of the 35 births (43%) were to females living in Worcester District.

## Associated Documents and Information

### National Guidance

- Public Health England (2018). Teenage Pregnancy Prevention Framework. [online] Available at: <https://www.gov.uk/government/publications/teenage-pregnancy-prevention-framework>

### Key Studies and Statistics

- Public Health Outcomes Framework- Sexual and Reproductive Health Fingertips Profile (2018). [online] Available at: <https://fingertips.phe.org.uk/profile/sexualhealth/data#page/3/qid/8000036/pat/6/par/E1200005/ati/102/are/E10000034/iid/20401/age/173/sex/2>
- Office for National Statistics (2018). Statistical Bulletin – Conceptions in England and Wales 2017. [online] ONS. Available at: <https://www.ons.gov.uk/peoplepopulationandcommunity/birthsdeathsandmarriages/conceptionandfertilityrates/bulletins/conceptionstatistics/2017#main-points>
- Births by mothers' usual area of residence in the UK (2018). [online] Office for National Statistics. Available at: <https://www.ons.gov.uk/peoplepopulationandcommunity/birthsdeathsandmarriages/livebirths/datasets/birthsbyareaofusualresidenceofmotheruk>
- Office for National Statistics (2018). *Live birth rates to women aged under 18 and under 20 years, in EU28 countries, 2006, 2015 and 2016*. [online] Available at: <https://www.ons.gov.uk/peoplepopulationandcommunity/birthsdeathsandmarriages/livebirths/adhocs/008261livebirthratestowomenagedunder18andunder20yearsineu28countries20062015and2016>

## Further Information and Feedback

If you or someone you know are affected by the issues raised in this publication, the following organisations may be able to offer advice and support: Initial advice can be obtained from the NHS at: <https://www.nhs.uk/conditions/pregnancy-and-baby/teenager-pregnant/>

There are also local services which you can access for further advice e.g. your GP, Maternity Services, The Starting Well Service and Sexual Health Services. Relevant websites are listed below:

<https://birthways.nhs.uk/>  
<http://www.hacw.nhs.uk/starting-well/>  
<http://www.knowyourstuff.nhs.uk/worcestershire/>

This report has been written by Worcestershire County Council's Public Health Team. We welcome your comments on these reports and how they could better suit your requirements, please do contact us with your ideas.

This document can be provided in alternative formats such as large print, audio recording or Braille. Contact for comments and alternative formats: Janette Fulton, Tel: 01905 843359, Email: [jfulton@worcestershire.gov.uk](mailto:jfulton@worcestershire.gov.uk)