

Worcestershire Health and Well-being Board

Joint Strategic Needs Assessment

PCN Profiles

Redditch & Bromsgrove Kingfisher

Information Lead: Janette Fulton

Version: 1.0

Written By: Cameron Russell

Date: December 2020

Review Date: December 2021

Overview

A PCN is a group of GPs within a specified geographic area. Primary Care Network (PCN) profiles are designed to support a shared understanding of health inequalities within each PCN, enabling a collaborative approach to identifying interventions to reduce inequalities.

The sixteen profiles across Worcestershire and Herefordshire provide a snapshot across a range of indicators and are intended to support PCNs and other Local Health and Well-being Stakeholders in identifying and addressing health inequalities.

Whilst some of the data may be familiar, it is hoped the profiles will facilitate greater insight into the challenges facing the local population.

We welcome feedback on the profiles, and areas for enhancement in the future edition.

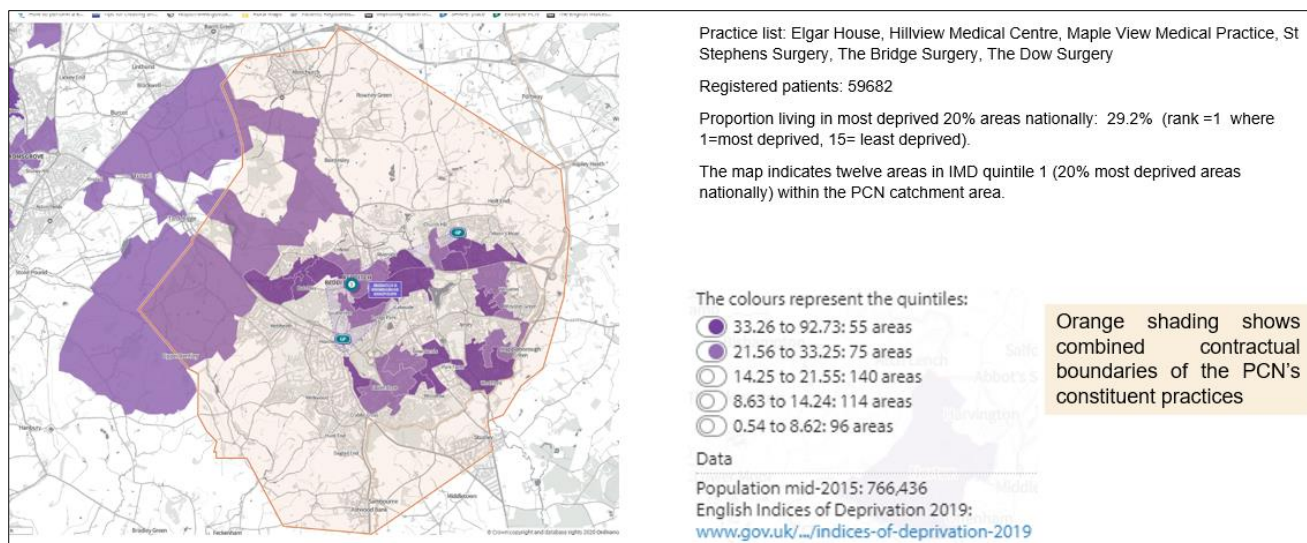
Further Information and Feedback

This report has been written by Worcestershire County Council's Public Health Team with guidance and support from the Joint Strategic Needs Assessment Working Group.

This document can be provided in alternative formats such as large print, audio recording or Braille.

Contact for comments, questions and alternative formats: Janette Fulton, Tel: 01905 843359, Email: jfulton@worcestershire.gov.uk

Redditch & Bromsgrove Kingfisher PCN



Estimated Index of Multiple Deprivation 2019 National Deciles - % of patients living in each decile



Data and Indicators

General Indicators	Redditch & Bromsgrove Kingfisher PCN	Herefordshire and Worcestershire CCG
% aged 65+ years	18.2	22.7
% with a long-standing health condition	57.9	55.3
% with caring responsibility	17.0	18.6
Working status - Paid work or full-time education	63.6	61.4
Working status - Unemployed	3.7	2.4

JSNA PCN Profiles

Cancer Prevalence and Screening	Redditch & Bromsgrove Kingfisher PCN	Herefordshire and Worcestershire CCG
Cancer: QOF prevalence (all ages)	2.8	
Exception rate for cancer indicator	15.7	18.4
Females, 25-64, attending cervical screening within target period (3.5 or 5.5 year coverage, %)	71.7	76.3
Females, 50-70, screened for breast cancer in last 36 months (3 year coverage, %)	72.0	75.1
Females, 50-70, screened for breast cancer within 6 months of invitation (Uptake, %)	65.0	74.2
In-patient or day-case colonoscopy procedures (Number per 100,000 population)	869.5	918.2
In-patient or day-case sigmoidoscopy procedures (Number per 100,000 population)	269.6	571.1
In-patient or day-case upper GI endoscopy procedures (Number per 100,000 population)	1381.8	1395.6
Number of emergency admissions with cancer (Number per 100,000 population)	593.2	546.2
Number of emergency presentations (Number per 100,000 population)	77.5	84.9
Number of other presentations (Number per 100,000 population)	375.8	504.0
Persons, 60-69, screened for bowel cancer in last 30 months (2.5 year coverage, %)	56.6	61.0
Persons, 60-69, screened for bowel cancer within 6 months of invitation (Uptake, %)	55.8	60.3

CHD	Redditch & Bromsgrove Kingfisher PCN	Herefordshire and Worcestershire CCG
CHD: QOF prevalence (all ages)	3.3	3.44
CHD002: Last BP reading in last 12mths is <=150/90 (den.incl.exc.)	89.4	89.36
CHD007: CHD patients immunised against flu (den.incl.exc.)	76.8	80.09