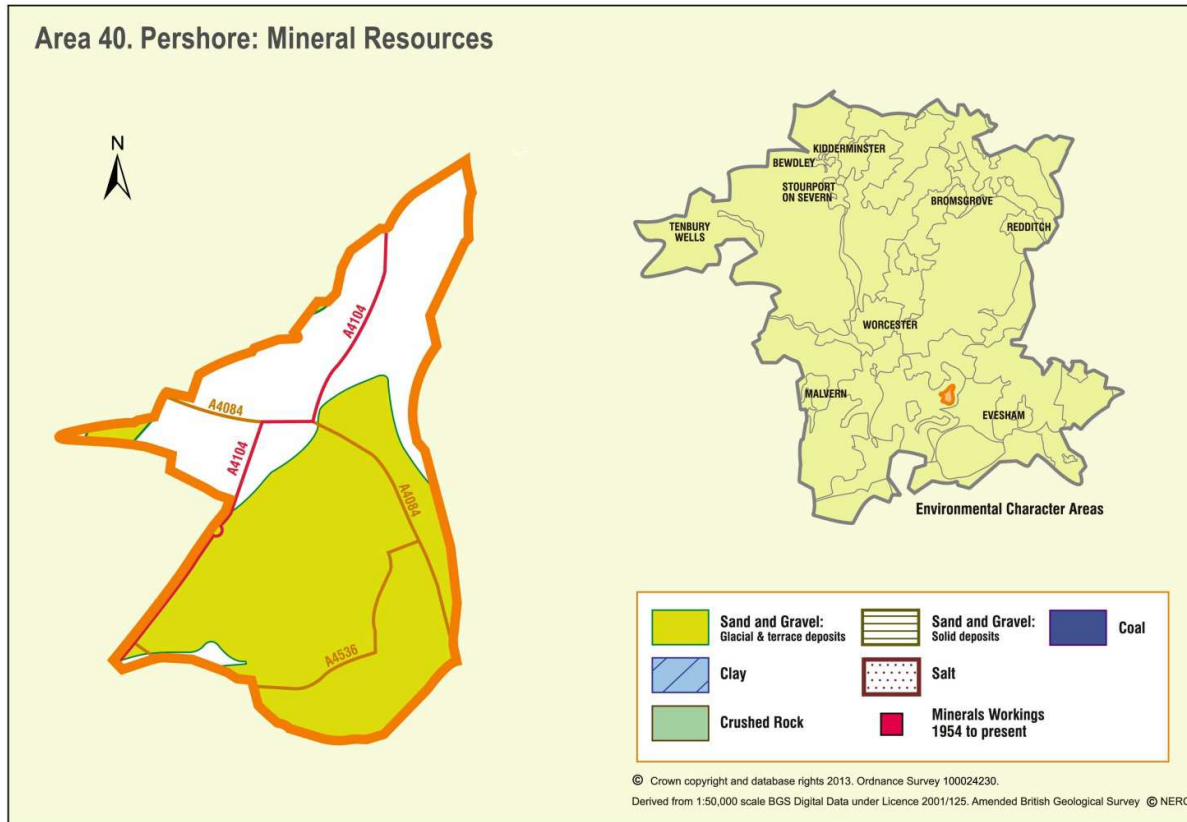


Appendix 40: Analysis of aggregate resources in Area 40: Pershore



ECA Summary for the Fourth Stage consultation on MLP (Winter 2018):

Sand and gravel

There are 2 resource areas identified for sand and gravel in Pershore area:

- Not significant: 1
- Compromised: 1

Crushed rock

There are no resource areas identified in Pershore area for crushed rock.

Non-aggregates

BGS data indicates that there are no non-aggregate mineral deposits in this area.

Overview of resource assessment for ECA 40

Sand and gravel resource areas:

Resource number*	Second Stage Consultation		Third Stage Consultation		Fourth Stage Consultation		
	Original estimated resource tonnage (2 tonnes/m ³)	Significance	Revised estimate of resource tonnage (1.65 tonnes/m ³)	Significance	New resource number (where resource has been split)	Revised estimate of resource tonnage (1.65 tonnes/m ³)	Result
40/1	Depth unknown	Compromised	Depth unknown	Compromised	Not reassessed		
40/2	Depth unknown	Not significant	Depth unknown	Not significant			

Overview		
Resource number:	40/1	
Resource name:	Pershore North	
Resource area:	119 ha	
Resource depth:	Not known	
Location		
OS sheet reference:	SO 94 NW & SO 94 NE	
National grid ref:	394562, 245606	
Resource description:		
Resource description:	1 st river terrace (Bretford) and 2 nd river terrace (Wasperton) sand and gravel. No exposures.	
Assessment of resource for the second consultation on MLP (Autumn 2013)		
Commentary:	A medium deposit, completely compromised by the settlement of Pershore.	
Crude estimate of resource:	Depth not known.	
Conclusion:	Compromised by development.	
Assessment of resource for the Third Stage consultation on MLP (Spring 2015)		
Revised estimate of resource:	No change to the assessment.	
Conclusion:	Compromised by development.	
Assessment of resource for the Fourth Stage consultation on MLP (August 2018)		
Not reassessed due to resource not being classified as Key or Significant in the Third Stage Consultation		

Overview		
Resource number:	40/2	
Resource name:	Pershore South	
Resource area:	16 ha	
Resource depth:	Not known	
Location		
OS sheet reference:	SO 94 NW & SO 94 SW	
National grid ref:	394793, 245054	
Resource description:		
Resource description:	1 st river terrace (Bretford) sand and gravel. No exposures.	
Assessment of resource for the second consultation on MLP (Autumn 2013)		
Commentary:	A small deposit, with allotments across much of the resource area.	
Crude estimate of resource:	Depth not known.	
Conclusion:	Not significant: Small deposit with no information to estimate the resource in this area. Not for consideration in defining areas of search.	
Assessment of resource for the Third Stage consultation on MLP (Spring 2015)		
Revised estimate of resource:	No change to the assessment.	
Conclusion:	Not significant.	
Assessment of resource for the Fourth Stage consultation on MLP (August 2018)		
Not reassessed due to resource not being classified as Key or Significant in the Third Stage Consultation		