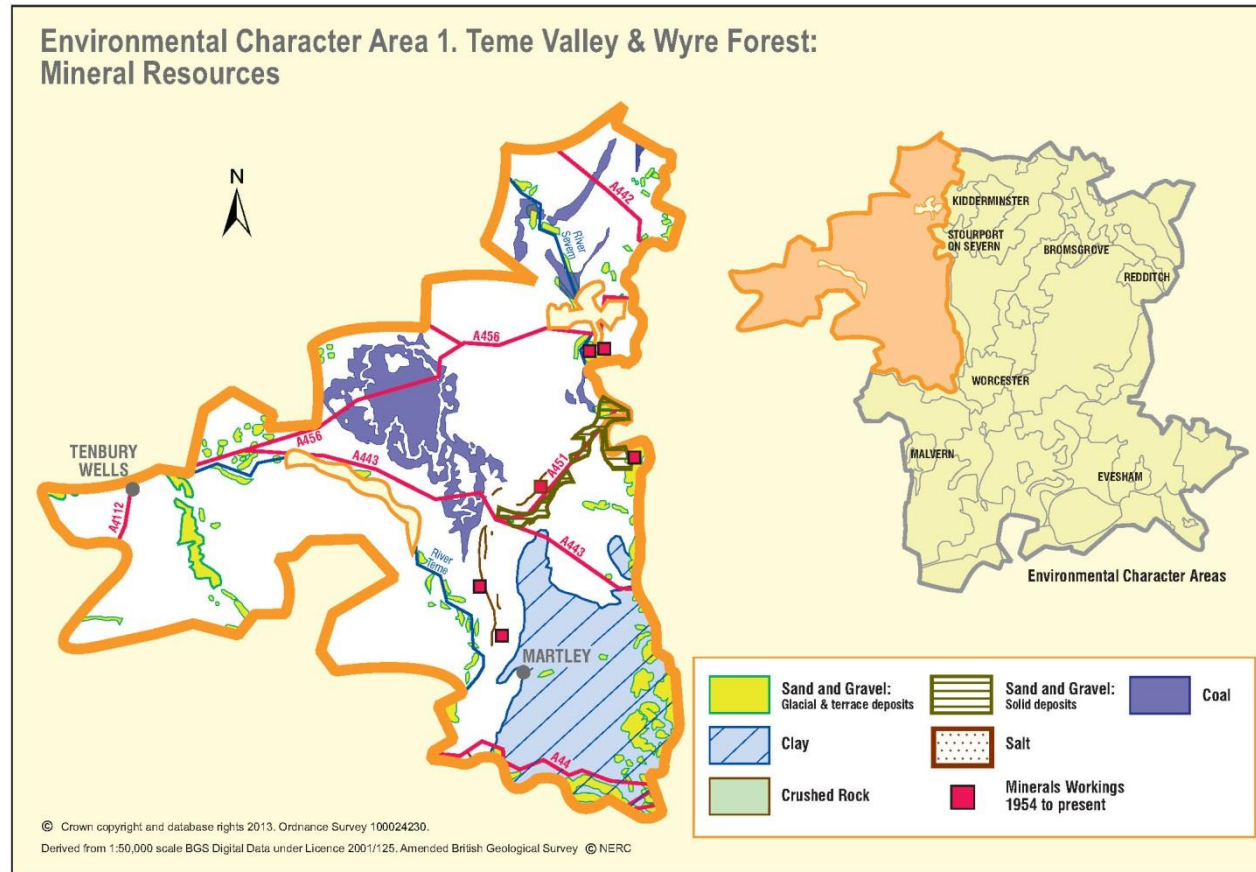


Appendix 1: Analysis of aggregate resources in ECA 1: Teme Valley and Wyre Forest



ECA Summary for the Fourth Stage consultation on MLP (Winter 2018):

Sand and gravel

There are 43 resource areas identified for sand and gravel in Severn Valley South ECA:

- Key: 2
- Significant: 8
- Not significant: 26
- Compromised: 7

Crushed rock

BGS data indicates that there are crushed rock resources in this ECA, however these are mapped as either less than 200m wide or less than 10ha in size. Therefore there are no resource areas identified in Teme Valley & Wyre Forest ECA for crushed rock.

Non-aggregates

BGS data indicates that there are deposits of clay and coal in this ECA. However, the Coal Authority and CoalPro have jointly informed the council that there are no commercially viable coal deposits in Worcestershire.

Overview of resource assessment for ECA 1

Sand and gravel resource areas:

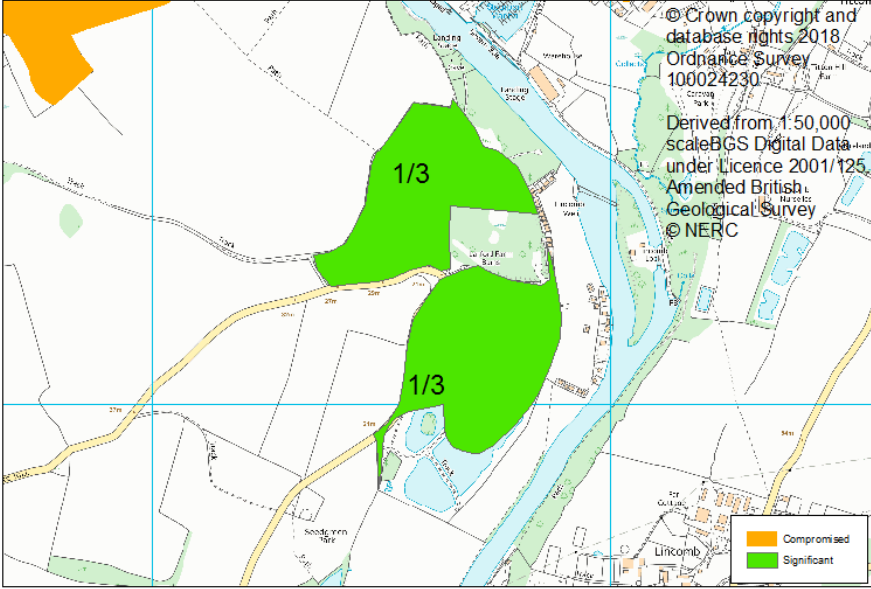
Resource number*	Second Stage Consultation		Third Stage Consultation		Fourth Stage Consultation		
	Original estimated resource tonnage (2 tonnes/m ³)	Significance	Revised estimate of resource tonnage (1.65 tonnes/m ³)	Significance	New resource number (where resource has been split)	Revised estimate of resource tonnage (1.65 tonnes/m ³)	Result
1/1	Depth unknown	Not significant	Depth unknown	Not significant	Not re-assessed		
1/2	Depth unknown	Not significant	Depth unknown	Not significant			
1/3	1,260,000	Significant	1,039,500	Significant		1,039,500	Significant
1/3a	2,016,000	Compromised	1,663,200	Compromised	Not re-assessed		
1/4	750,000	Significant	618,750	Significant	1/4	515,625	Not significant
					1/4a		Compromised
1/5	3,190,000	Key	2,631,750	Key		2,631,750	Key
1/6	1,600,000	Significant	1,320,000	Significant		1,221,000	Significant
1/6a	500,000	Compromised	412,500	Compromised	Not re-assessed		
1/7	594,000	Not significant	490,050	Not significant			
1/8	242,000	Not significant	199,650	Not significant			
1/9	220,000	Not significant	181,500	Not significant			
1/10	220,000	Not significant	181,500	Not significant			
1/11	3,224,000	Key	2,659,800	Key		2,455,200	Key
1/11a	1,085,000	Compromised	895,125	Compromised	Not re-assessed		
1/12	625,000	Significant	515,625	Not significant			

1/13	350,000	Not significant	350,000	Not significant			
1/14	1,800,000	Significant	1,800,000	Significant	1/14	1,485,000	Significant
					1/14a		Compromised
1/15	340,000	Not significant	340,000	Not significant	Not re-assessed		
1/16	Depth unknown	Not significant	Depth unknown	Not significant			
1/17	480,000	Not significant	480,000	Not significant			
1/18	Depth unknown	Not significant	Depth unknown	Not significant			
1/19	Depth unknown	Not significant	Depth unknown	Not significant			
1/20	Depth unknown	Significant	Depth unknown	Significant	1/20	Depth unknown	Significant
					1/20a		Compromised
1/21	Depth unknown	Not significant	Depth unknown	Not significant	Not re-assessed		
1/22	Depth unknown	Not significant	Depth unknown	Not significant			
1/23	Depth unknown	Significant	Depth unknown	Significant	1/23	Depth unknown	Significant
					1/23a		Compromised
1/24	Depth unknown	Not significant	Depth unknown	Not significant	Not re-assessed		
1/25	Depth unknown	Not significant	Depth unknown	Not significant			
1/26	Depth unknown	Not significant	Depth unknown	Not significant			
1/27	Depth unknown	Not significant	Depth unknown	Not significant			
1/28	960,000	Significant	792,000	Significant	1/28	660,000	Significant
					1/28a		Compromised
1/29	630,000	Significant	519,750	Not significant	Not re-assessed		
1/30	Depth unknown	Significant	Depth unknown	Significant	1/30	Depth unknown	Significant
					1/30a		Compromised

1/31	Depth unknown	Not significant	Depth unknown	Not significant	Not re-assessed		
1/32	596,330,000	Key	491,972,250	Key	1/32	Depth unknown	Significant
					1/32a		Compromised
1/33	149,691,000	Compromised	123,495,075	Compromised	Not re-assessed		

Overview	
Resource number:	1/1
Resource name:	Upper Arley
Location	
OS sheet reference:	SO 78 SE
National grid ref:	376195, 280651
Resource description:	
Resource description:	3 rd terrace (Holt Heath) sand and gravel. No thicknesses recorded in BGS memoirs.
Assessment of resource for the second consultation on MLP (Autumn 2013)	
Commentary:	A small deposit with little built development.
Resource area:	18 ha
Resource depth:	Not known
Crude estimate of resource:	Depth not known.
Conclusion:	Not significant: Small deposit with no information to estimate the resource in this area. Not for consideration in defining areas of search.
Assessment of resource for the Third Stage consultation on MLP (Spring 2015)	
Revised estimate of resource:	No change to the assessment.
Conclusion:	Not significant.
Assessment of resource for the Fourth Stage consultation on MLP (August 2018)	
Not reassessed due to resource not being classified as Key or Significant in the Third Stage Consultation	

Overview	
Resource number:	1/2
Resource name:	Ribbesford
Location	
OS sheet reference:	SO 77 SE
National grid ref:	378829, 273936
Resource description:	
Resource description:	1 st terrace (Powerhouse) sand and gravel. No details of thickness or composition recorded in BGS memoirs.
Assessment of resource for the second consultation on MLP (Autumn 2013)	
Commentary:	A small deposit intersected by roads but with little other built development.
Resource area:	14ha
Resource depth:	Depth not known
Crude estimate of resource:	Depth not known.
Conclusion:	Not significant: Small deposit with no information to estimate the resource in this area. Not for consideration in defining areas of search.
Assessment of resource for the Third Stage consultation on MLP (Spring 2015)	
Revised estimate of resource:	No change to the assessment.
Conclusion:	Not significant.
Assessment of resource for the Fourth Stage consultation on MLP (August 2018)	
Not reassessed due to resource not being classified as Key or Significant in the Third Stage Consultation	

Overview	
Resource number:	1/3
Resource name:	Larford
Location	
OS sheet reference:	SO 86 NW
National grid ref:	381486, 268722
	
Resource description:	
Resource description:	1 st terrace (Powerhouse), 2 nd terrace (Worcester) and 3 rd terrace (Holt Heath) sand and gravel. Extensively worked by the Severn Valley Sand and Gravel Company Ltd. The 3 rd terrace was worked to a depth of 8m and the 2 nd and 1 st terraces to between 4m and 5m. (Estimated resource depth based on mean average of a) 1 st and 2 nd terrace depths (mid-point of 4m to 5m = 4.5m) and b) 3 rd terrace depths 8m = 6.3m)
Assessment of resource for the second consultation on MLP (Autumn 2013)	
Commentary:	A small resource area which is part of a deposit which has been extensively worked. Worked areas are not included as part of the resource area. The deposit also continues beyond the former working to the north (resource area 1/3a) and over 500m to the south (resource area 1/29).
Resource area:	20 ha
Resource depth:	Estimated 6.3m
Crude estimate of resource:	Area: 20 ha x average depth: 6.3 ÷ 2 Estimated resource volume: 630,000m ³ Estimated resource tonnage (at 2 t/m³): 1,260,000 tonnes
Conclusion:	Significant. Consider in defining areas of search.
Assessment of resource for the Third Stage consultation on MLP (Spring 2015)	
Resource area:	20 ha

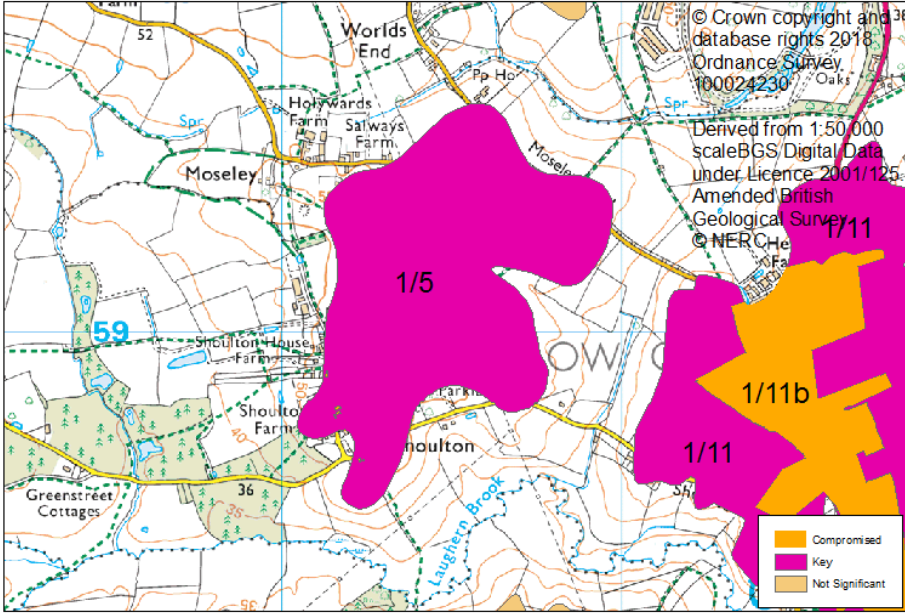
Resource depth:	Estimated 6.3m
Revised estimate of resource:	Area: 20 ha x average depth: 6.3 ÷ 2 Estimated resource volume: 630,000m ³ Estimated resource tonnage (at 1.65 t/m³): 1,039,500 tonnes
Conclusion:	Significant.
Assessment of resource for the Fourth Stage consultation on MLP (August 2018)	
Resource area:	20 ha
Resource depth:	Estimated 6.3m
Revised estimate of resource:	Area: 20 ha x average depth: 6.3 ÷ 2 Estimated resource volume: 630,000m ³ Estimated resource tonnage (at 1.65 t/m³): 1,039,500 tonnes
Conclusion:	Significant.

Overview	
Resource number:	1/3a
Resource name:	Larford a)
Location	
OS sheet reference:	SO 86 NW
National grid ref:	380819, 270166
Resource description:	
Resource description:	Resource area 1/3a is 1 st terrace (Powerhouse), 2 nd terrace (Worcester) and 3 rd terrace (Holt Heath) sand and gravel. Extensively worked by the Severn Valley Sand and Gravel Company Ltd. The 3 rd terrace was worked to a depth of 8m and the 2 nd and 1 st terraces to between 4m and 5m. It is underlain by solid sand, assessed as resource area 1/34. (Estimated resource depth based on mean average of a) 1 st and 2 nd terrace depths (mid-point of 4m to 5m = 4.5m) and b)

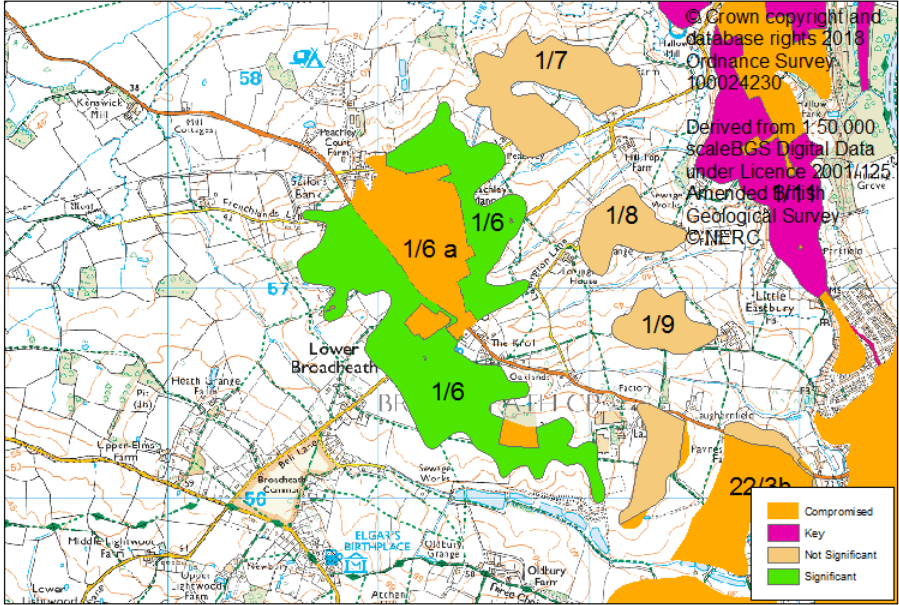
3 rd terrace depths 8m = 6.3m)	
Assessment of resource for the second consultation on MLP (Autumn 2013)	
Commentary:	A small resource area which is part of a deposit which has been extensively worked and is compromised by the settlement of the Walshes. Worked areas are not included as part of the resource area. The deposit also continues beyond the former working to the south east (resource area 1/3) and over 500m to the south (resource area 1/29).
Resource area:	32 ha
Resource depth:	Estimated 6.3m
Crude estimate of resource:	Area: 32 ha x average depth: 6.3 ÷ 2 Estimated resource volume: 1,008,000m ³ Estimated resource tonnage (at 2 t/m³): 2,016,000 tonnes
Conclusion:	Compromised by development with less than 10ha of the deposit remaining.
Assessment of resource for the Third Stage consultation on MLP (Spring 2015)	
Resource area:	32 ha
Resource depth:	Estimated 6.3m
Revised estimate of resource:	Area: 32 ha x average depth: 6.3 ÷ 2 Estimated resource volume: 1,008,000m ³ Estimated resource tonnage (at 1.65 t/m³): 1,663,200 tonnes
Conclusion:	Compromised by development with less than 10ha of the deposit remaining.
Assessment of resource for the Fourth Stage consultation on MLP (August 2018)	
Not reassessed due to resource not being classified as Key or Significant in the Third Stage Consultation.	

Overview		
Resource number:	1/4	
Resource name:	Sinton Green	
Location		
OS sheet reference:	SO 86 SW, SO 85 NW	
National grid ref:	381792, 260319	
Resource description:		
Resource description:	<p>4th terrace (Kidderminster Station) sand and gravel. The memoir records that deposits in this area are about 2-3m thick. This is supported by findings at a borehole in the 4th terrace at Little Eastbury, south of Hallow (approx. 3km south of this resource area), which recorded 0.9m of overburden and 1.8m of sand and gravel. Estimated resource depth based on memoir record for the area: midpoint of 2m to 3m = 2.5m</p>	
Assessment of resource for the second consultation on MLP (Autumn 2013)		
Commentary:	A small resource area intersected by roads with some ribbon development.	
Resource area:	30 ha	
Resource depth:	Estimated 2.5m	
Crude estimate of resource:	<p>Area: 30 ha x average depth: 2.5 m ÷ 2 Estimated resource volume: 375,000 m³ Estimated resource tonnage (at 2 t/m³): 750,000 tonnes</p>	
Conclusion:	Significant.	
Assessment of resource for the Third Stage consultation on MLP (Spring 2015)		
Resource area:	30 ha	
Resource depth:	Estimated 2.5m	

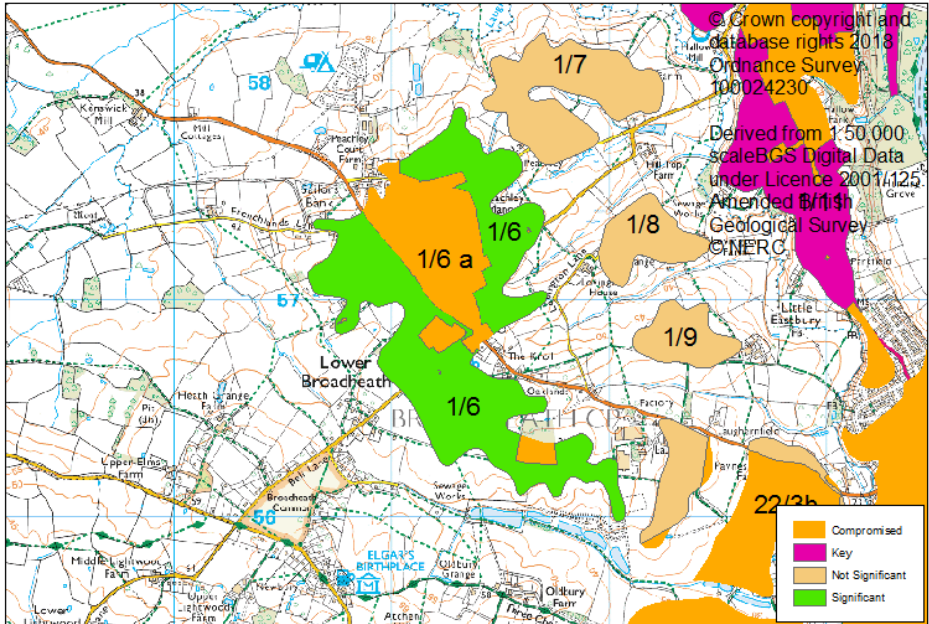
Revised estimate of resource:	Area: 30 ha x average depth: 2.5 m ÷ 2 Estimated resource volume: 375,000 m ³ Estimated resource tonnage (at 1.65 t/m³): 618,750 tonnes
Conclusion:	Significant.
Assessment of resource for the Fourth Stage consultation on MLP (August 2018)	
This resource area has been split into areas 1/4 and 1/4a.	
Resource area 1/4	
Resource area:	25 ha
Resource depth:	Estimated 2.5m
Revised estimate of resource:	Area: 25 ha x average depth: 2.5 m ÷ 2 Estimated resource volume: 312,500 m ³ Estimated resource tonnage (at 1.65 t/m³): 515,625 tonnes
Conclusion:	Not significant.
Resource area 1/4a	
Commentary:	Screened out due to the following appendix A criterion: - Listed Building - Settlement Boundary
Conclusion:	Compromised

Overview	
Resource number:	1/5
Resource name:	Moseley
Location	
OS sheet reference:	SO 85 NW
National grid ref:	381473, 259143
	
Resource description:	
Resource description:	4 th terrace (Kidderminster Station) sand and gravel. The memoir records that deposits in this area are about 2-3m thick except at Moseley where the terrace is 5-6m thick. (Estimated resource depth based on midpoint of resource depth at Moseley: 5.5m)
Assessment of resource for the second consultation on MLP (Autumn 2013)	

Commentary:	A medium resource area intersected by roads with some ribbon development.
Resource area:	58 ha
Resource depth:	Estimated 5.5m
Crude estimate of resource:	Area: 58 ha x average depth: 5.5m ÷ 2 Estimated resource volume: 1,595,000m ³ Estimated resource tonnage (at 2 t/m³): 3,190,000 tonnes
Conclusion:	Significant – key resource. Use to define areas of search.
Assessment of resource for the Third Stage consultation on MLP (Spring 2015)	
Resource area:	58 ha
Resource depth:	Estimated 5.5m
Revised estimate of resource:	Area: 58 ha x average depth: 5.5m ÷ 2 Estimated resource volume: 1,595,000m ³ Estimated resource tonnage (at 1.65 t/m³): 2,631,750 tonnes
Conclusion:	Significant – key resource.
Assessment of resource for the Fourth Stage consultation on MLP (August 2018)	
Resource area:	58 ha
Resource depth:	Estimated 5.5m
Revised estimate of resource:	Area: 58 ha x average depth: 5.5 ÷ 2 Estimated resource volume: 1,595,500m ³ Estimated resource tonnage (at 1.65 t/m³): 2,631,750 tonnes
Conclusion:	Key resource

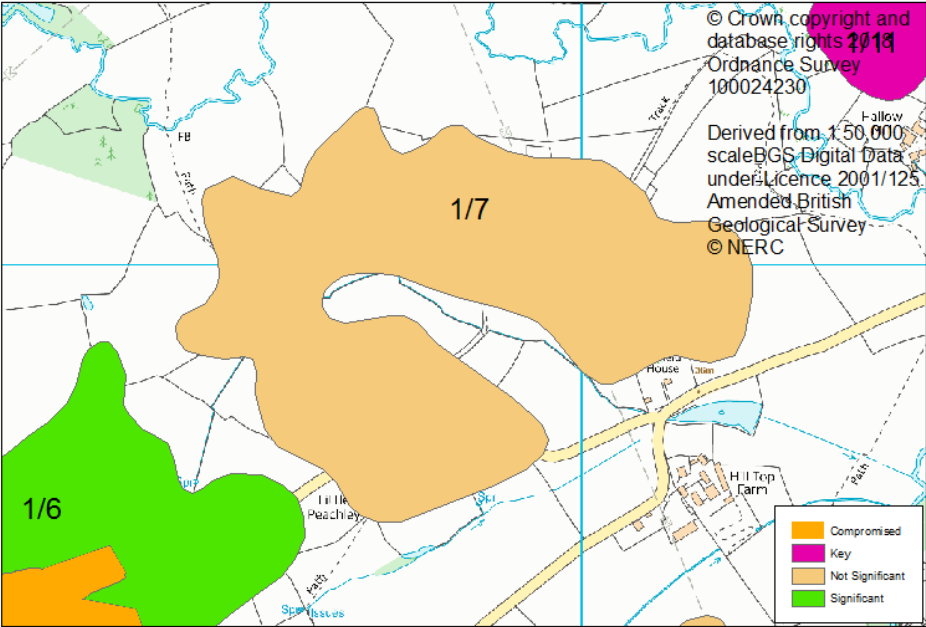
Overview	
Resource number:	1/6
Resource name:	Lower Broadheath
Location	
OS sheet reference:	SO 85 NW
National grid ref:	381308, 256897
	
Resource description:	
Resource description:	A 5 th terrace (Bushley Green) sand and gravel deposit. The deposit consists of predominantly of yellow to red-brown pebbly sand but is locally clayey or gravelly. The BGS memoirs state that much of it is less than 2m thick in Lower Broadheath. Three resistivity soundings just south of Lower Broadheath indicate up to 2m of sand and/or gravel on Mercia Mudstone. (Estimated resource depth based on estimates of 2m)
Assessment of resource for the second consultation on MLP (Autumn 2013)	
Commentary:	A medium-sized resource area in two sections either side of the village of Lower Broadheath.
Resource area:	80 ha
Resource depth:	Estimated 2m
Crude estimate of resource:	Area: 80 ha x average depth: 2m ÷ 2 Estimated resource volume: 800,000 m ³ Estimated resource tonnage (at 2 t/m³): 1,600,000 tonnes
Conclusion:	Significant. Consider in defining areas of search.
Assessment of resource for the Third Stage consultation on MLP (Spring 2015)	
Resource area:	80 ha
Resource depth:	Estimated 2m
Revised estimate of resource:	Area: 80 ha x average depth: 2m ÷ 2 Estimated resource volume: 800,000 m ³ Estimated resource tonnage (at 1.65 t/m³): 1,320,000 tonnes

Conclusion:	Significant.
Assessment of resource for the Fourth Stage consultation on MLP (August 2018)	
Resource area:	74 ha
Resource depth:	Estimated 2m
Revised estimate of resource:	Area: 74 ha x average depth: 2 ÷ 2 Estimated resource volume: 740,000m ³ Estimated resource tonnage (at 1.65 t/m³): 1,221,000 tonnes
Conclusion:	Significant resource

Overview	
Resource number:	1/6 a
Resource name:	Lower Broadheath a)
Location	
OS sheet reference:	SO 85 NW
National grid ref:	381308, 256897
	
Resource description:	
Resource description:	5 th terrace (Bushley Green) sand and gravel. The deposit consists of predominantly of yellow to red-brown pebbly sand but is locally clayey or gravelly. The BGS memoirs state that much of it is less than 2m thick in Lower Broadheath. Three resistivity soundings just south of Lower Broadheath indicate up to 2m of sand and/or gravel on Mercia Mudstone. (Estimated resource depth based on estimates of 2m)
Assessment of resource for the second consultation on MLP (Autumn 2013)	
Commentary:	A small resource area compromised by the settlement of Lower Broadheath. The deposit extends to the east and west of the village (assessed as resource area 1/6).
Resource area:	25 ha
Resource depth:	Estimated 2m

Crude estimate of resource:	Area: 25 ha x average depth: 2m ÷ 2 Estimated resource volume: 250,000 m ³ Estimated resource tonnage (at 2 t/m³): 500,000 tonnes
Conclusion:	Compromised by development.
Assessment of resource for the Third Stage consultation on MLP (Spring 2015)	
Resource area:	25 ha
Resource depth:	Estimated 2m
Revised estimate of resource:	Area: 25 ha x average depth: 2m ÷ 2 Estimated resource volume: 250,000 m ³ Estimated resource tonnage (at 1.65 t/m³): 412,500 tonnes
Conclusion:	Compromised by development.
Assessment of resource for the Fourth Stage consultation on MLP (August 2018)	
Commentary:	Screened out due to the following appendix A criterion: <ul style="list-style-type: none"> - Allocated site in South Worcestershire Development Plan - Ancient Semi-Natural Woodland - Listed Building - Settlement Boundary
Conclusion:	Compromised

Overview	
Resource number:	1/7
Resource name:	Ashfield Farm
Location	
OS sheet reference:	SO 85 NW
National grid ref:	381807, 257947



Resource description:

Resource description: 4th terrace (Kidderminster Station) sand and gravel. A borehole in the 4th terrace at Little Eastbury, south of Hallow (approx. 1km south west of this resource area), recorded 0.9m of overburden and 1.8m of sand and gravel. The memoir records that deposits in this area are about 2-3m thick.

(Estimated resource depth based on average of: a) borehole at Little Eastbury: 1.8m and b) memoir record: (midpoint of 2m to 3m = 2.5m) = 2.2m

Assessment of resource for the second consultation on MLP (Autumn 2013)

Commentary:	A small resource area with little built development.
Resource area:	27 ha
Resource depth:	Estimated 2.2m
Crude estimate of resource:	Area: 27 ha x average depth: 2.2 m ÷ 2 Estimated resource volume: 297,000 m ³ Estimated resource tonnage (at 2 t/m³): 594,000 tonnes
Conclusion:	Not significant: Small deposit with less than 300,000m ³ . Not for consideration in defining areas of search.

Assessment of resource for the Third Stage consultation on MLP (Spring 2015)

Resource area:	27 ha
Resource depth:	Estimated 2.2m
Revised estimate of resource:	Area: 27 ha x average depth: 2.2 m ÷ 2 Estimated resource volume: 297,000 m ³

Estimated resource tonnage (at 1.65 t/m³): 490,050 tonnes

Conclusion: Not significant.

Assessment of resource for the Fourth Stage consultation on MLP (August 2018)

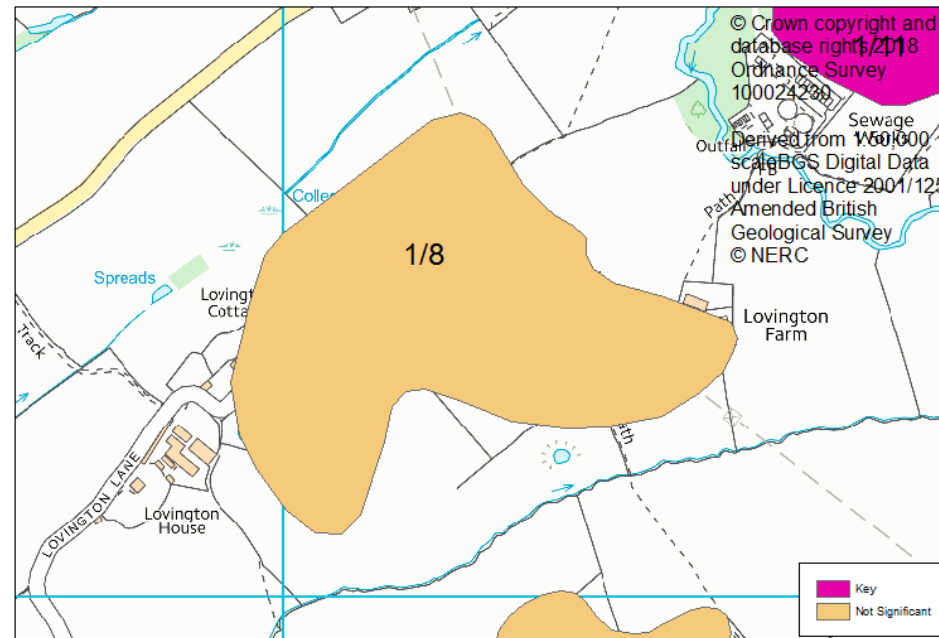
Not reassessed due to resource not being classified as Key or Significant in the Third Stage Consultation.

Overview

Resource number: 1/8
Resource name: Lovington

Location

OS sheet reference: SO 85 NW
National grid ref: 382164, 257280



Resource description:

Resource description: 4th terrace (Kidderminster Station) sand and gravel. A borehole in the 4th terrace at Little Eastbury recorded 0.9m of overburden and 1.8m of sand and gravel. The memoir records that deposits in this area are about 2-3m thick.

(Estimated resource depth based on average of: a) borehole at Little Eastbury: 1.8m and b) memoir record: (midpoint of 2m to 3m = 2.5m) = 2.2m

Assessment of resource for the second consultation on MLP (Autumn 2013)

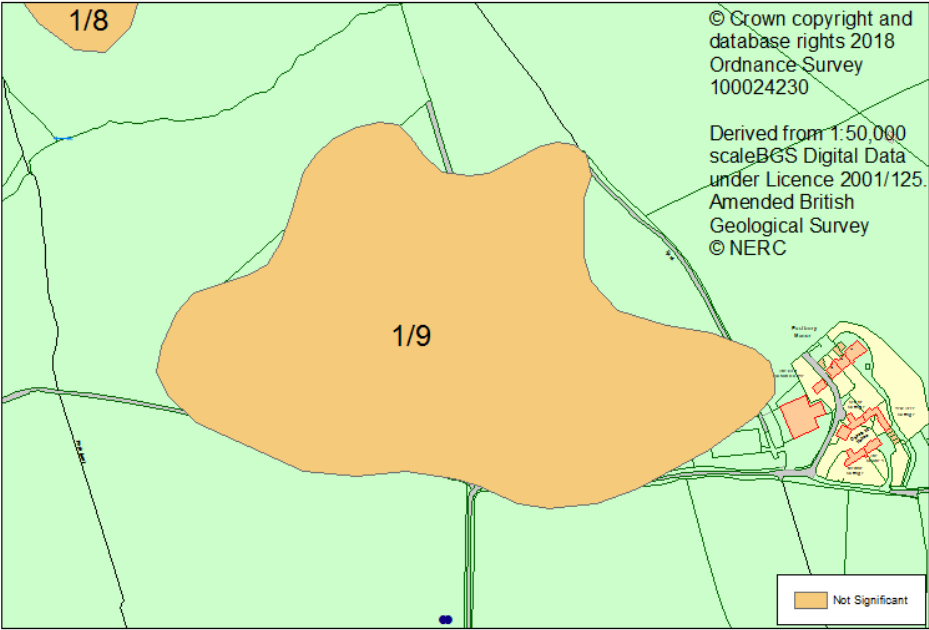
Commentary: A small resource area with little built development.

Resource area: 11 ha

Resource depth: Estimated 2.2m

Crude estimate of resource: Area: 11 ha x average depth: 2.2 m ÷ 2
Estimated resource volume: 121,000 m³
Estimated resource tonnage (at 2 t/m³): 242,000 tonnes

Conclusion:	Not significant: Small deposit with less than 300,000m ³ . Not for consideration in defining areas of search.
Assessment of resource for the Third Stage consultation on MLP (Spring 2015)	
Resource area:	11 ha
Resource depth:	Estimated 2.2m
Revised estimate of resource:	Area: 11 ha x average depth: 2.2 m ÷ 2 Estimated resource volume: 121,000 m ³ Estimated resource tonnage (at 1.65 t/m³): 199,650 tonnes
Conclusion:	Not significant.
Assessment of resource for the Fourth Stage consultation on MLP (August 2018)	
Not reassessed due to resource not being classified as Key or Significant in the Third Stage Consultation.	

Overview	
Resource number:	1/9
Resource name:	Eastbury Manor
Location	
OS sheet reference:	SO 85 NW
National grid ref:	382343, 256830
	
Resource description:	
Resource description:	A 4 th terrace (Kidderminster Station) sand and gravel. A borehole in the 4 th terrace at Little Eastbury recorded 0.9m of overburden and 1.8m of sand and gravel. The memoir records that deposits in this area are about 2-3m thick. (Estimated resource depth based on average of: a) borehole at Little Eastbury: 1.8m and b) memoir record: (midpoint of 2m to 3m = 2.5m) = 2.2m
Assessment of resource for the second consultation on MLP (Autumn 2013)	
Commentary:	A small resource area with little built development.
Resource area:	10 ha
Resource depth:	Estimated 2.2m
Crude estimate of resource:	Area: 10 ha x average depth: 2.2m ÷ 2 Estimated resource volume: 110,000 m ³ Estimated resource tonnage (at 2 t/m³): 220,000 tonnes
Conclusion:	Not significant: Small deposit with less than 300,000m ³ . Not for consideration in defining areas of search.
Assessment of resource for the Third Stage consultation on MLP (Spring 2015)	
Resource area:	10 ha
Resource depth:	Estimated 2.2m
Revised estimate of	Area: 10 ha x average depth: 2.2m ÷ 2

resource:	Estimated resource volume: 110,000 m ³ Estimated resource tonnage (at 1.65 t/m³): 181,500 tonnes
Conclusion:	Not significant.
Assessment of resource for the Fourth Stage consultation on MLP (August 2018)	
Not reassessed due to resource not being classified as Key or Significant in the Third Stage Consultation.	

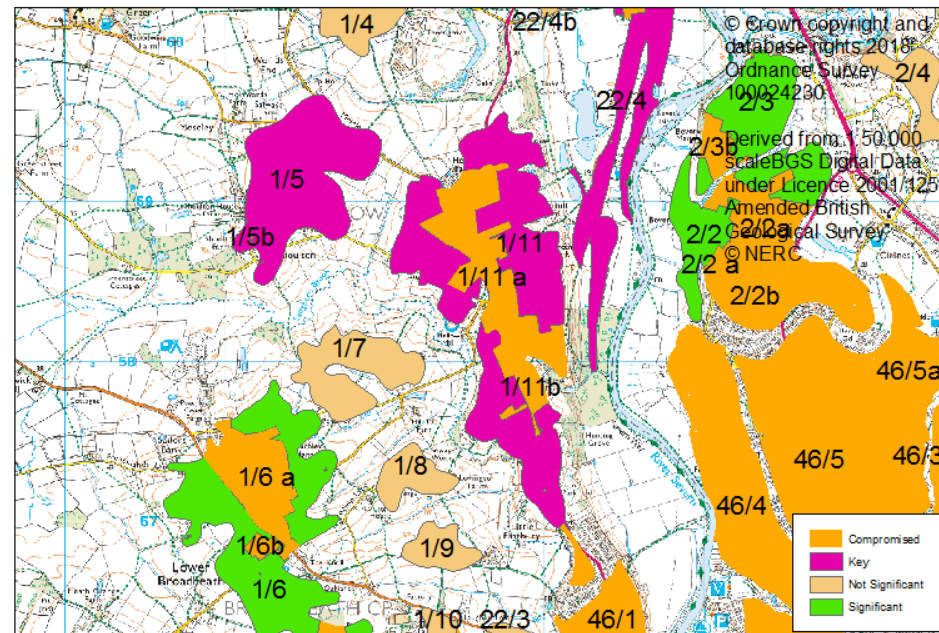
Overview	
Resource number:	1/10
Resource name:	Temple Laughern
Location	
OS sheet reference:	SO 85 NW
National grid ref:	382314, 256180
<p>© Crown copyright and database rights 2018 Ordnance Survey 100024230 Derived from 1:50,000 scale BGS Digital Data under Licence 2001-125 Amended British Geological Survey © NERC</p>	
Resource description:	
Resource description:	4 th terrace (Kidderminster Station) sand and gravel. A borehole in the 4 th terrace at Little Eastbury, south of Hallow, recorded 0.9m of overburden and 1.8m of sand and gravel. The memoir records that deposits in this area are about 2-3m thick.
	(Estimated resource depth based on average of: a) borehole at Little Eastbury: 1.8m and b) memoir record: (midpoint of 2m to 3m = 2.5m) = 2.2m
Assessment of resource for the second consultation on MLP (Autumn 2013)	
Commentary:	A small resource area with little built development.
Resource area:	10 ha
Resource depth:	Estimated 2.2m
Crude estimate of resource:	Area: 10 ha x average depth: 2.2m ÷ 2 Estimated resource volume: 110,000 m ³ Estimated resource tonnage (at 2 t/m³): 220,000 tonnes
Conclusion:	Not significant: Small deposit with less than 300,000m ³ . Not for consideration in defining areas of search.
Assessment of resource for the Third Stage consultation on MLP (Spring 2015)	
Resource area:	10 ha
Resource depth:	Estimated 2.2m
Revised estimate of	Area: 10 ha x average depth: 2.2m ÷ 2

resource:	Estimated resource volume: 110,000 m ³ Estimated resource tonnage (at 1.65 t/m³): 181,500 tonnes
Conclusion:	Not significant.
Assessment of resource for the Fourth Stage consultation on MLP (August 2018)	
Not reassessed due to resource not being classified as Key or Significant in the Third Stage Consultation.	

Overview	
Resource number:	1/11
Resource name:	Hallow
Location	
OS sheet reference:	SO 85 NW
National grid ref:	382719, 258413
Resource description:	
Resource description:	<p>4th terrace (Kidderminster Station) sand and gravel. A borehole in the 4th terrace at Little Eastbury, south of Hallow, recorded 0.9m of overburden and 1.8m of sand and gravel. Three resistivity soundings on the deposits at Hallow indicate sand and/or gravel to a depth of up to 4.1m resting on Mercia Mudstone. The terrace at Hallow is also reported in the memoir as about 5m thick, thinning to 2-3m at its southern extremity.</p> <p>(Estimated resource depth based on mean average of a) borehole at little Eastbury 1.8m b) resistivity soundings 4.1m and c) BGS memoir reports on the terrace at Hallow (mid-point of 5m to 2m) 3.5m = 3.1m)</p>
Assessment of resource for the second consultation on MLP (Autumn 2013)	
Commentary:	A medium-sized resource area in two sections either side of the village of Hallow. An A road runs through the resource area with some ribbon development. The deposit extends under the village of Hallow (assessed as resource area 1/11a).
Resource area:	104 ha
Resource depth:	Estimated 3.1m
Crude estimate of resource:	<p>Area: 104 ha x average depth: 3.1m ÷ 2</p> <p>Estimated resource volume: 1,612,000 m³</p> <p>Estimated resource tonnage (at 2 t/m³): 3,224,000 tonnes</p>
Conclusion:	<p>Significant – key resource.</p> <p>Use to define areas of search.</p>
Assessment of resource for the Third Stage consultation on MLP (Spring 2015)	
Resource area:	104 ha

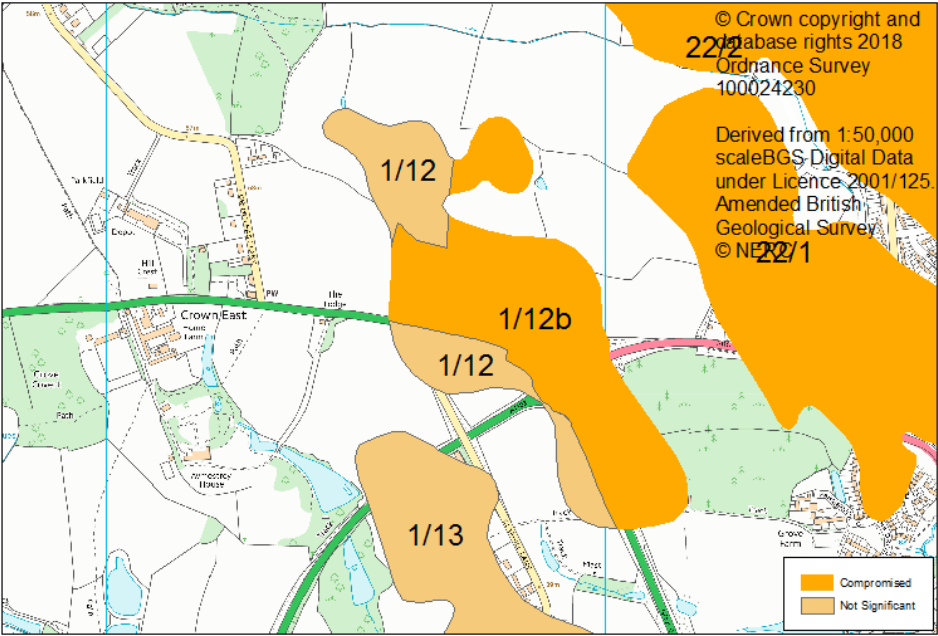
Resource depth:	Estimated 3.1m
Revised estimate of resource:	Area: 104 ha x average depth: 3.1m ÷ 2 Estimated resource volume: 1,612,000 m ³ Estimated resource tonnage (at 1.65 t/m³): 2,659,800 tonnes
Conclusion:	Significant – key resource.
Assessment of resource for the Fourth Stage consultation on MLP (August 2018)	
Resource area:	96 ha
Resource depth:	Estimated 3.1m
Revised estimate of resource:	Area: 96 ha x average depth: 3.1m ÷ 2 Estimated resource volume: 1,488,000 m ³ Estimated resource tonnage (at 1.65 t/m³): 2,455,200 tonnes
Conclusion:	Key resource

Overview	
Resource number:	1/11 a
Resource name:	Hallow a)
Location	
OS sheet reference:	SO 85 NW
National grid ref:	382719, 258413



Resource description:	
Resource description:	4 th terrace (Kidderminster Station) sand and gravel. A borehole in the 4 th terrace at Little Eastbury, south of Hallow, recorded 0.9m of overburden and 1.8m of sand and gravel. Three resistivity soundings on the deposits at Hallow indicate sand and/or gravel to a depth of up to 4.1m resting on Mercia Mudstone. The terrace at Hallow is also reported in the memoir as about 5m thick, thinning to 2-3m at its southern extremity.
	Estimated resource depth based on mean average of a) borehole at little Eastbury 1.8m b) resistivity

	soundings 4.1m and c) BGS memoir reports on the terrace at Hallow (mid point of 5m to 2m) 3.5m = 3.1m
Assessment of resource for the second consultation on MLP (Autumn 2013)	
Commentary:	A small resource area compromised by the settlement of Hallow. The deposit extends to the east and west of the village of Hallow (assessed as resource area 1/11).
Resource area:	35 ha
Resource depth:	Estimated 3.1m
Crude estimate of resource:	Area: 35 ha x average depth: 3.1m ÷ 2 Estimated resource volume: 542,500 m ³ Estimated resource tonnage (at 2 t/m³): 1,085,000 tonnes
Conclusion:	Compromised by development.
Assessment of resource for the Third Stage consultation on MLP (Spring 2015)	
Resource area:	35 ha
Resource depth:	Estimated 3.1m
Revised estimate of resource:	Area: 35 ha x average depth: 3.1m ÷ 2 Estimated resource volume: 542,500 m ³ Estimated resource tonnage (at 1.65 t/m³): 895,125 tonnes
Conclusion:	Compromised by development.
Assessment of resource for the Fourth Stage consultation on MLP (August 2018)	
Commentary:	Screened out due to the following appendix A criterion: <ul style="list-style-type: none"> - Allocated site in South Worcestershire Development Plan - Conservation Area - Listed Building(s) - Settlement Boundary
Conclusion:	Compromised

Overview	
Resource number:	1/12
Resource name:	Crown East
Location	
OS sheet reference:	SO 85 SW
National grid ref:	381729, 254768
 <p>© Crown copyright and database rights 2018 Ordnance Survey 100024230</p> <p>Derived from 1:50,000 scale BGS Digital Data under Licence 2001/125. Amended British Geological Survey © NPS 2011</p>	
Resource description:	
Resource description:	4 th terrace (Kidderminster Station) sand and gravel. The memoir records that deposits in this area are about 2-3m thick. Estimated resource depth based on midpoint of 2-3m = 2.5m
Assessment of resource for the second consultation on MLP (Autumn 2013)	
Commentary:	A small resource area intersected by roads.
Resource area:	25 ha
Resource depth:	Estimated 2.5m
Crude estimate of resource:	Area: 25 ha x average depth: 2.5m ÷ 2 Estimated resource volume: 312,500m ³ Estimated resource tonnage (at 2 t/m³): 625,000 tonnes
Conclusion:	Significant. Consider in defining areas of search.
Assessment of resource for the Third Stage consultation on MLP (Spring 2015)	
Resource area:	25 ha
Resource depth:	Estimated 2.5m
Revised estimate of resource:	Area: 25 ha x average depth: 2.5m ÷ 2 Estimated resource volume: 312,500m ³ Estimated resource tonnage (at 1.65 t/m³): 515,625 tonnes
Conclusion:	Change to conclusion: Not significant.

Assessment of resource for the Fourth Stage consultation on MLP (August 2018)

Not reassessed due to resource not being classified as Key or Significant in the Third Stage Consultation.

Overview	
Resource number:	1/13
Resource name:	Claphill Lane
Location	
OS sheet reference:	SO 85 SW
National grid ref:	381737, 254121
Resource description:	
Resource description:	4 th terrace (Kidderminster Station) sand and gravel. The memoir records that deposits in this area are about 2-3m thick. Estimated resource depth based on midpoint of 2-3m = 2.5m
Assessment of resource for the second consultation on MLP (Autumn 2013)	
Commentary:	A small resource area intersected by roads.
Resource area:	14 ha
Resource depth:	Estimated 2.5m
Crude estimate of resource:	Area: 14 ha x average depth: 2.5m ÷ 2 Estimated resource volume: 175,000 m ³ Estimated resource tonnage (at 2 t/m³): 350,000 tonnes
Conclusion:	Not significant: Small deposit with less than 300,000m ³ . Not for consideration in defining areas of search.
Assessment of resource for the Third Stage consultation on MLP (Spring 2015)	
Resource area:	14 ha
Resource depth:	Estimated 2.5m
Revised estimate of resource:	Area: 14 ha x average depth: 2.5m ÷ 2 Estimated resource volume: 175,000 m ³ Estimated resource tonnage (at 1.65 t/m³): 288,750 tonnes
Conclusion:	Not significant.

Assessment of resource for the Fourth Stage consultation on MLP (August 2018)

Not reassessed due to resource not being classified as Key or Significant in the Third Stage Consultation.

Overview	
Resource number:	1/14
Resource name:	Cotheridge
Location	
OS sheet reference:	SO 75 SE
National grid ref:	378994, 254659
Resource description:	
Resource description:	3 rd terrace (Holt Heath) sand and gravel. The gravels contain a high proportion of exotic material of Scottish and Lake District origin. At least 2.5m of gravel is reported east of Cotheridge in the BGS memoirs. (Estimated resource depth based on memoir record for Cotheridge: 2.5m)
Assessment of resource for the second consultation on MLP (Autumn 2013)	
Commentary:	A medium resource area with some built development.
Resource area:	72 ha
Resource depth:	Estimated 2.5m
Crude estimate of resource:	Area: 72 ha x average depth: 2.5m ÷ 2 Estimated resource volume: 900,000 m ³ Estimated resource tonnage (at 2 t/m³): 1,800,000 tonnes
Conclusion:	Significant. Consider in defining areas of search.
Assessment of resource for the Third Stage consultation on MLP (Spring 2015)	
Resource area:	72 ha
Resource depth:	Estimated 2.5m
Revised estimate of resource:	Area: 72 ha x average depth: 2.5m ÷ 2 Estimated resource volume: 900,000 m ³ Estimated resource tonnage (at 1.65 t/m³): 1,485,000 tonnes
Conclusion:	Significant.

Assessment of resource for the Fourth Stage consultation on MLP (August 2018)

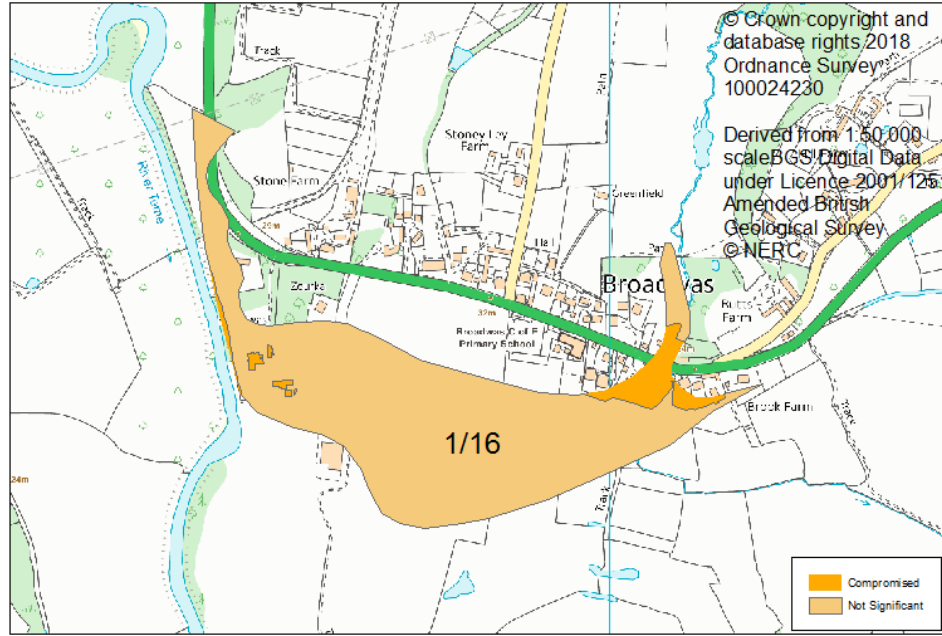
This resource area has been split into areas 1/14 and 1/14a.

Resource area 1/14		Resource area 1/14a	
Resource area:	72 ha	Commentary:	Screened out due to the following appendix A criterion: - Listed Buildings
Resource depth:	Estimated 2.5m		
Revised estimate of resource:	Area: 72 ha x average depth: 2.5m ÷ 2 Estimated resource volume: 900,000 m ³ Estimated resource tonnage (at 1.65 t/m³): 1,485,000 tonnes		
Conclusion:	Significant resource	Conclusion:	Compromised

Overview	
Resource number:	1/15
Resource name:	Lower Court
Location	
OS sheet reference:	SO 75 SE
National grid ref:	378996, 254086
Resource description:	
Resource description:	2 nd terrace (Worcester) sand and gravel. Although the memoir refers to extensive deposits of 2 nd terrace around Cotheridge, the only information on depth given is a section at Horsham (approx. 6km north west of this resource area) which showed about 2.3m of red silt above 1m of gravel. (Estimated resource depth based on section at Horsham: 1m)
Assessment of resource for the second consultation on MLP (Autumn 2013)	
Commentary:	A small resource area with little built development.
Resource area:	34 ha
Resource depth:	Estimated 1m
Crude estimate of resource:	Area: 34 ha x average depth: 1m ÷ 2 Estimated resource volume: 170,000 m ³ Estimated resource tonnage (at 2 t/m³): 340,000 tonnes
Conclusion:	Not significant: Small deposit with less than 300,000m ³ . Not for consideration in defining areas of search.
Assessment of resource for the Third Stage consultation on MLP (Spring 2015)	
Resource area:	34 ha
Resource depth:	Estimated 1m
Revised estimate of resource:	Area: 34 ha x average depth: 1m ÷ 2 Estimated resource volume: 170,000 m ³ Estimated resource tonnage (at 1.65 t/m³): 280,500 tonnes

Conclusion: Not significant.
Assessment of resource for the Fourth Stage consultation on MLP (August 2018)
Not reassessed due to resource not being classified as Key or Significant in the Third Stage Consultation.

Overview	
Resource number:	1/16
Resource name:	Broadwas
Location	
OS sheet reference:	SO 75 NE, SO 75 SE
National grid ref:	375743, 255098



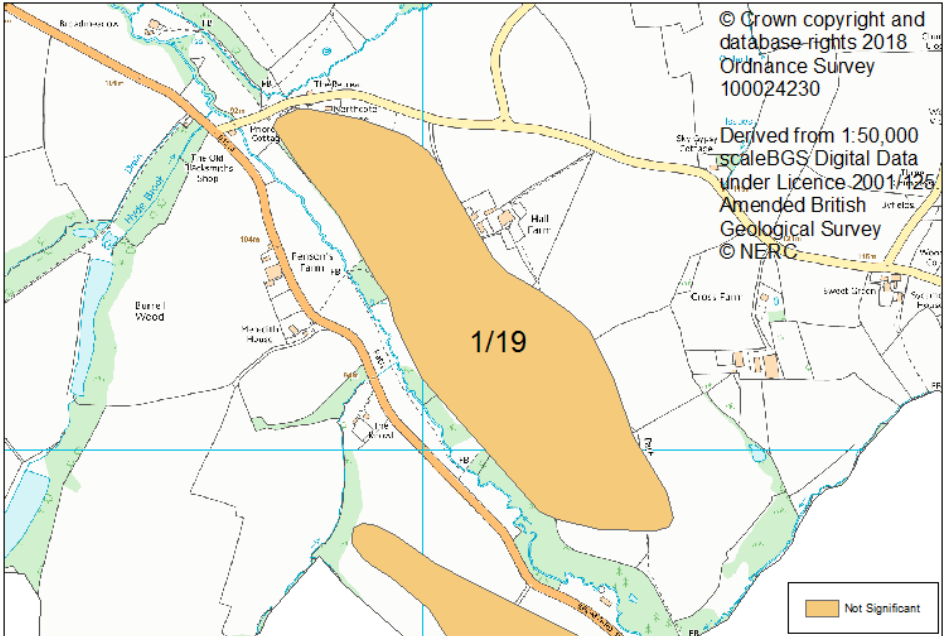
Resource description:	
Resource description:	1 st terrace (Powerhouse) sand and gravel. No thicknesses recorded in the BGS memoirs.
Assessment of resource for the second consultation on MLP (Autumn 2013)	
Commentary:	A small resource area with some built development across the area.
Resource area:	14 ha
Resource depth:	Not known
Crude estimate of resource:	Depth not known.
Conclusion:	Not significant: Small deposit with no information to estimate the resource in this area. Not for consideration in defining areas of search.
Assessment of resource for the Third Stage consultation on MLP (Spring 2015)	
Resource area:	14 ha
Resource depth:	Not known
Revised estimate of resource:	No change to the assessment.
Conclusion:	Not significant.
Assessment of resource for the Fourth Stage consultation on MLP (August 2018)	
Not reassessed due to resource not being classified as Key or Significant in the Third Stage Consultation.	

Overview	
Resource number:	1/17
Resource name:	Horsham
Location	
OS sheet reference:	SO 75 NW
National grid ref:	373125, 257880
Resource description:	
Resource description:	1 st terrace (Powerhouse) and 2 nd terrace (Worcester) sand and gravel. No information on 1 st terrace thicknesses. A section in the 2 nd terrace at Horsham showed about 2.3m of silt above 1m of gravel. (Estimated resource depth based on section in 2 nd terrace at Horsham: 1m)
Assessment of resource for the second consultation on MLP (Autumn 2013)	
Commentary:	A medium resource area with little built development.
Resource area:	48 ha
Resource depth:	Estimated 1m
Crude estimate of resource:	Area: 48 ha x average depth: 1m ÷ 2 Estimated resource volume: 240,000 m ³ Estimated resource tonnage (at 2 t/m³): 480,000 tonnes
Conclusion:	Not significant: Small deposit with less than 300,000m ³ . Not for consideration in defining areas of search.
Assessment of resource for the Third Stage consultation on MLP (Spring 2015)	
Resource area:	48 ha
Resource depth:	Estimated 1m
Revised estimate of resource:	Area: 48 ha x average depth: 1m ÷ 2 Estimated resource volume: 240,000 m ³ Estimated resource tonnage (at 1.65 t/m³): 396,000 tonnes
Conclusion:	Not significant.

Assessment of resource for the Fourth Stage consultation on MLP (August 2018)

Not reassessed due to resource not being classified as Key or Significant in the Third Stage Consultation.

Overview	
Resource number:	1/18
Resource name:	Pie Corner
Location	
OS sheet reference:	SO 66 SW
National grid ref:	364157, 261590
Resource description:	
Resource description:	BGS digital data indicates that this is Bank Farm sand and gravel. No further information available in the BGS memoirs.
Assessment of resource for the second consultation on MLP (Autumn 2013)	
Commentary:	A small resource area with little built development.
Resource area:	10 ha
Resource depth:	Not known
Crude estimate of resource:	Depth not known.
Conclusion:	Not significant: Small deposit with no information to estimate the resource in this area. Not for consideration in defining areas of search.
Assessment of resource for the Third Stage consultation on MLP (Spring 2015)	
Resource area:	10 ha
Resource depth:	Not known
Revised estimate of resource:	No change to the assessment.
Conclusion:	Not significant.
Assessment of resource for the Fourth Stage consultation on MLP (August 2018)	
Not reassessed due to resource not being classified as Key or Significant in the Third Stage Consultation.	

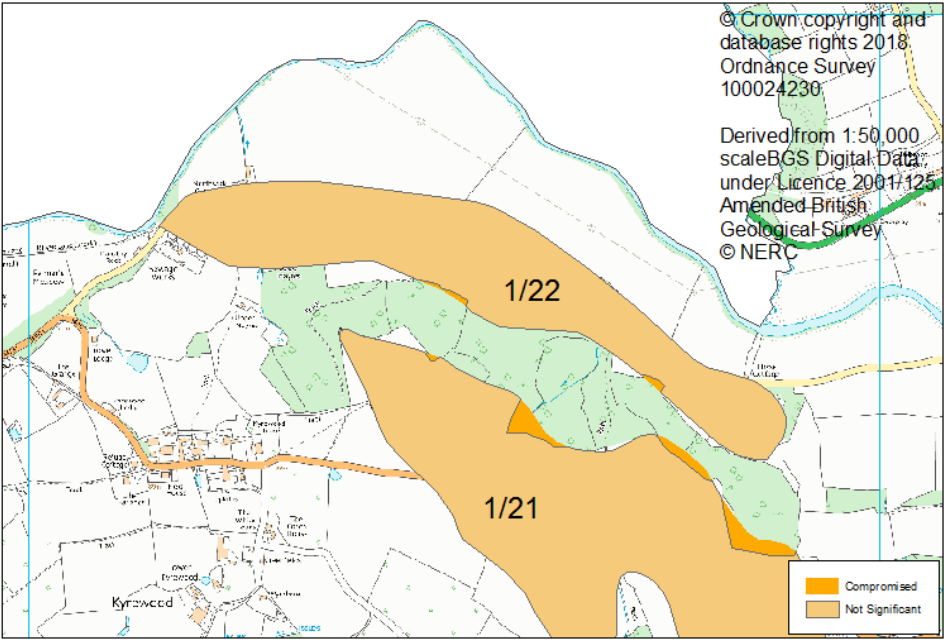
Overview	
Resource number:	1/19
Resource name:	Hall Farm
Location	
OS sheet reference:	SO 66 SW
National grid ref:	364108, 262221
 <p>© Crown copyright and database rights 2018 Ordnance Survey 100024230 Derived from 1:50,000 scale BGS Digital Data under Licence 2001/426 Amended British Geological Survey © NERC</p>	
Resource description:	
Resource description:	BGS data indicates that this is Bank Farm sand and gravel. No further information available in the BGS memoirs.
Assessment of resource for the second consultation on MLP (Autumn 2013)	
Commentary:	A small resource area with little built development
Resource area:	21 ha
Resource depth:	Not known
Crude estimate of resource:	Depth not known.
Conclusion:	Not significant: Small deposit with no information to estimate the resource in this area. Not for consideration in defining areas of search.
Assessment of resource for the Third Stage consultation on MLP (Spring 2015)	
Resource area:	21 ha
Resource depth:	Not known
Revised estimate of resource:	No change to the assessment.
Conclusion:	Not significant.
Assessment of resource for the Fourth Stage consultation on MLP (August 2018)	

Not reassessed due to resource not being classified as Key or Significant in the Third Stage Consultation.

Overview		<p>Derived from 1:50,000-scale BGS Digital Data under Licence 2001/125. Amended British Geological Survey © NERC © Crown copyright and database rights 2018 Ordnance Survey 100024230</p>																															
Resource number:	1/20																																
Resource name:	Nineveh																																
Location																																	
OS sheet reference:	SO 66 SW	<table border="1"> <tr> <td>Resource description:</td> <td>BGS data indicates that this is Bank Farm sand and gravel. No further information available in the BGS memoirs.</td> </tr> <tr> <td colspan="2">Assessment of resource for the second consultation on MLP (Autumn 2013)</td> </tr> <tr> <td>Commentary:</td> <td>A large resource area with little built development.</td> </tr> <tr> <td>Resource area:</td> <td>223 ha</td> </tr> <tr> <td>Resource depth:</td> <td>Not known</td> </tr> <tr> <td>Crude estimate of resource:</td> <td>Depth not known.</td> </tr> <tr> <td>Conclusion:</td> <td>Significant. Consider in defining areas of search.</td> </tr> <tr> <td colspan="2">Assessment of resource for the Third Stage consultation on MLP (Spring 2015)</td> </tr> <tr> <td>Resource area:</td> <td>223 ha</td> </tr> <tr> <td>Resource depth:</td> <td>Not known</td> </tr> <tr> <td>Revised estimate of resource:</td> <td>No change to the assessment.</td> </tr> <tr> <td>Conclusion:</td> <td>Significant.</td> </tr> <tr> <td colspan="2">Assessment of resource for the Fourth Stage consultation on MLP (August 2018)</td> </tr> <tr> <td colspan="2">This resource area has been split into areas 1/20 and 1/20b.</td> </tr> <tr> <td colspan="2">Resource area 1/20</td> <td>Resource area 1/20b</td> </tr> </table>	Resource description:	BGS data indicates that this is Bank Farm sand and gravel. No further information available in the BGS memoirs.	Assessment of resource for the second consultation on MLP (Autumn 2013)		Commentary:	A large resource area with little built development.	Resource area:	223 ha	Resource depth:	Not known	Crude estimate of resource:	Depth not known.	Conclusion:	Significant. Consider in defining areas of search.	Assessment of resource for the Third Stage consultation on MLP (Spring 2015)		Resource area:	223 ha	Resource depth:	Not known	Revised estimate of resource:	No change to the assessment.	Conclusion:	Significant.	Assessment of resource for the Fourth Stage consultation on MLP (August 2018)		This resource area has been split into areas 1/20 and 1/20b.		Resource area 1/20		Resource area 1/20b
Resource description:	BGS data indicates that this is Bank Farm sand and gravel. No further information available in the BGS memoirs.																																
Assessment of resource for the second consultation on MLP (Autumn 2013)																																	
Commentary:	A large resource area with little built development.																																
Resource area:	223 ha																																
Resource depth:	Not known																																
Crude estimate of resource:	Depth not known.																																
Conclusion:	Significant. Consider in defining areas of search.																																
Assessment of resource for the Third Stage consultation on MLP (Spring 2015)																																	
Resource area:	223 ha																																
Resource depth:	Not known																																
Revised estimate of resource:	No change to the assessment.																																
Conclusion:	Significant.																																
Assessment of resource for the Fourth Stage consultation on MLP (August 2018)																																	
This resource area has been split into areas 1/20 and 1/20b.																																	
Resource area 1/20		Resource area 1/20b																															

Resource area:	222 ha	Commentary:	Screened out due to the following appendix A criterion: <ul style="list-style-type: none"> - Listed Buildings - Scheduled Ancient Monuments
Resource depth:	Not known		
Revised estimate of resource:	Depth not known.		
Conclusion:	Significant resource	Conclusion:	Compromised

Overview		
Resource number:	1/21	
Resource name:	Kyrewood	
Location		
OS sheet reference:	SO 66 SW	
National grid ref:	361407, 267713	
Resource description:		
Resource description:	BGS data indicates that this is Bank Farm sand and gravel. No further information available in the BGS memoirs.	
Assessment of resource for the second consultation on MLP (Autumn 2013)		
Commentary:	A small resource area intersected by a road.	
Resource area:	50 ha	
Resource depth:	Not known	
Crude estimate of resource:	Depth not known.	
Conclusion:	Not significant: Small deposit with no information to estimate the resource in this area. Not for consideration in defining areas of search.	
Assessment of resource for the Third Stage consultation on MLP (Spring 2015)		
Resource area:	50 ha	
Resource depth:	Not known	
Revised estimate of resource:	No change to the assessment.	
Conclusion:	Not significant.	
Assessment of resource for the Fourth Stage consultation on MLP (August 2018)		
Not reassessed due to resource not being classified as Key or Significant in the Third Stage Consultation.		

Overview	
Resource number:	1/22
Resource name:	Monk's Bridge
Location	
OS sheet reference:	SO 66 SW
National grid ref:	361042, 268378
	
Resource description:	
Resource description:	Undifferentiated river terrace. No further information available in the BGS memoirs.
Assessment of resource for the second consultation on MLP (Autumn 2013)	
Commentary:	A small resource area with a road running along the northern edge. Little other built development.
Resource area:	27 ha
Resource depth:	Not known
Crude estimate of resource:	Depth not known.
Conclusion:	Not significant: Small deposit with no information to estimate the resource in this area. Not for consideration in defining areas of search.
Assessment of resource for the Third Stage consultation on MLP (Spring 2015)	
Resource area:	27 ha
Resource depth:	Not known
Revised estimate of resource:	No change to the assessment.
Conclusion:	Not significant.
Assessment of resource for the Fourth Stage consultation on MLP (August 2018)	
Not reassessed due to resource not being classified as Key or Significant in the Third Stage Consultation.	

Overview	
Resource number:	1/23
Resource name:	Westbrook
Location	
OS sheet reference:	SO 56 NE
National grid ref:	355726, 267395
Resource description:	
Resource description:	BGS data indicates that this is Little Hereford sand and gravel. No further information available in the BGS memoirs.
Assessment of resource for the second consultation on MLP (Autumn 2013)	
Commentary:	A medium resource area intersected by roads. The deposit extends to a small extent over the county boundary. This section is not considered as part of the resource area.
Resource area:	61 ha ¹
Resource depth:	Not known
Crude estimate of resource:	Depth not known.
Conclusion:	Significant. Consider in defining areas of search.
Assessment of resource for the Third Stage consultation on MLP (Spring 2015)	
Resource area:	61 ha ²
Resource depth:	Not known
Revised estimate of resource:	No change to the assessment.
Conclusion:	Significant.

¹ In previous versions, this figure was incorrectly recorded as 62 ha due to the resource extending beyond the county boundary.

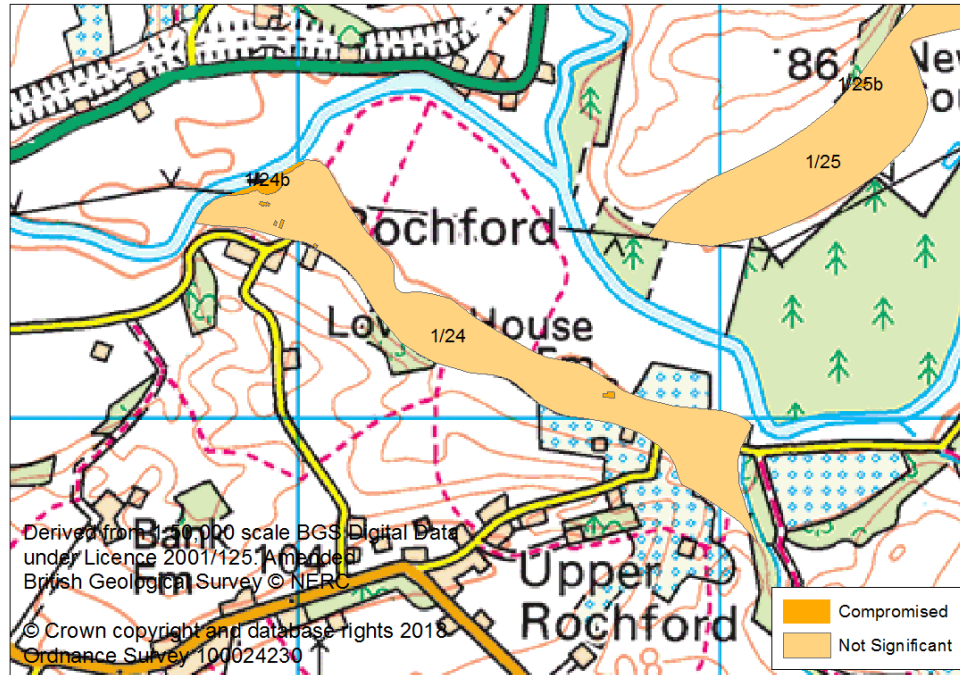
² In previous versions, this figure was incorrectly recorded as 62 ha due to the resource extending beyond the county boundary.

Assessment of resource for the Fourth Stage consultation on MLP (August 2018)

This resource area has been split into areas 1/23 and 1/23a.

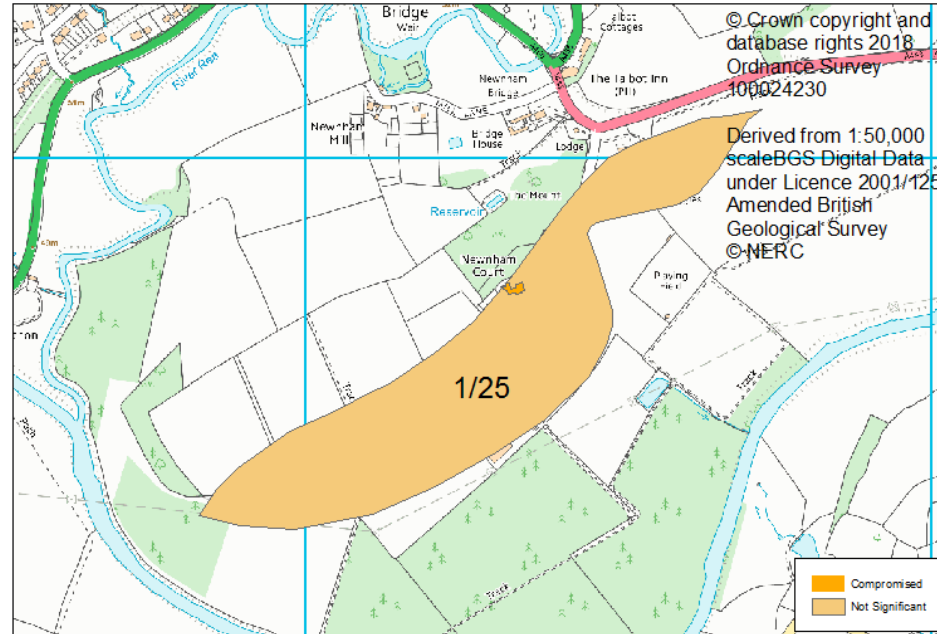
Resource area 1/23		Resource area 1/23a	
Resource area:	60 ha	Commentary:	Screened out due to the following appendix A criterion: - Ancient Semi-Natural Woodland
Resource depth:	Not known		
Revised estimate of resource:	Depth not known.		
Conclusion:	Significant resource	Conclusion:	Compromised

Overview	
Resource number:	1/24
Resource name:	Rochford
Location	
OS sheet reference:	SO 66 NE
National grid ref:	363442, 268199

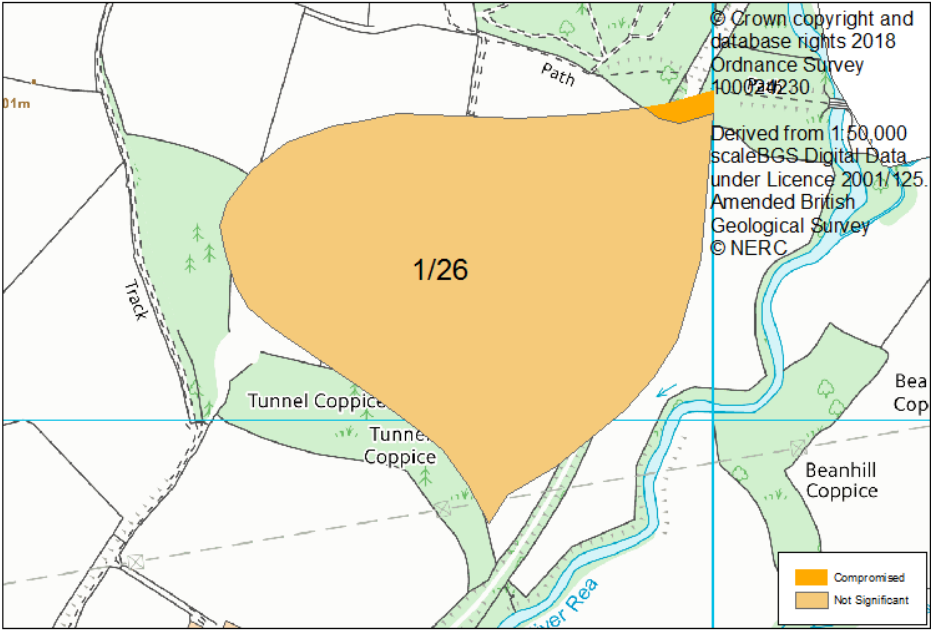


Resource description:	
Resource description:	Undifferentiated river terrace deposit. No further information available in the BGS memoirs.
Assessment of resource for the second consultation on MLP (Autumn 2013)	
Commentary:	A small narrow resource area intersected by a road down the length of the area.
Resource area:	18 ha
Resource depth:	Not known
Crude estimate of resource:	Depth not known.
Conclusion:	Not significant: Small deposit with no information to estimate the resource in this area. Not for consideration in defining areas of search.
Assessment of resource for the Third Stage consultation on MLP (Spring 2015)	
Resource area:	18 ha
Resource depth:	Not known
Revised estimate of resource:	No change to the assessment.
Conclusion:	Not significant.
Assessment of resource for the Fourth Stage consultation on MLP (August 2018)	
Not reassessed due to resource not being classified as Key or Significant in the Third Stage Consultation.	

Overview	
Resource number:	1/25
Resource name:	Newnham Court
Location	
OS sheet reference:	SO 66 NE
National grid ref:	364275, 268678



Resource description:	
Resource description:	Undifferentiated river terrace deposit. No further information available in the BGS memoirs.
Assessment of resource for the second consultation on MLP (Autumn 2013)	
Commentary:	A small resource area with little built development.
Resource area:	15 ha
Resource depth:	Not known
Crude estimate of resource:	Depth not known.
Conclusion:	Not significant: Small deposit with no information to estimate the resource in this area. Not for consideration in defining areas of search.
Assessment of resource for the Third Stage consultation on MLP (Spring 2015)	
Resource area:	15 ha
Resource depth:	Not known
Revised estimate of resource:	No change to the assessment.
Conclusion:	Not significant.
Assessment of resource for the Fourth Stage consultation on MLP (August 2018)	
Not reassessed due to resource not being classified as Key or Significant in the Third Stage Consultation.	

Overview	
Resource number:	1/26
Resource name:	Tunnel Coppice
Location	
OS sheet reference:	SO 66 NE
National grid ref:	364780, 270145
 <p>© Crown copyright and database rights 2018 Ordnance Survey 100021230</p> <p>Derived from 1:50,000 scale BGS Digital Data under Licence 2001/125. Amended British Geological Survey © NERC</p> <p>Legend: Compromised Not Significant</p>	
Resource description:	
Resource description:	A 2 nd river terrace deposit. No further information available in the BGS memoirs.
Assessment of resource for the second consultation on MLP (Autumn 2013)	
Commentary:	A small resource area with little built development.
Resource area:	12 ha
Resource depth:	Not known
Crude estimate of resource:	Depth not known.
Conclusion:	Not significant: Small deposit with no information to estimate the resource in this area. Not for consideration in defining areas of search.
Assessment of resource for the Third Stage consultation on MLP (Spring 2015)	
Resource area:	12 ha
Resource depth:	Not known
Revised estimate of resource:	No change to the assessment.
Conclusion:	Not significant.
Assessment of resource for the Fourth Stage consultation on MLP (August 2018)	
Not reassessed due to resource not being classified as Key or Significant in the Third Stage Consultation.	

Overview		
Resource number:	1/27	
Resource name:	Eardiston	
Location		
OS sheet reference:	SO 66 NE	
National grid ref:	369286, 268179	
Resource description:		
Resource description:	2 nd terrace sand and gravel. Exposures are scarce and there are no details of depth in this location.	
Assessment of resource for the second consultation on MLP (Autumn 2013)		
Commentary:	A small resource area with dispersed development across the area.	
Resource area:	11 ha	
Resource depth:	Not known	
Crude estimate of resource:	Depth not known	
Conclusion:	Not significant: Small deposit with no information to estimate the resource in this area. Not for consideration in defining areas of search.	
Assessment of resource for the Third Stage consultation on MLP (Spring 2015)		
Resource area:	11 ha	
Resource depth:	Not known	
Revised estimate of resource:	No change to the assessment.	
Conclusion:	Not significant.	
Assessment of resource for the Fourth Stage consultation on MLP (August 2018)		
Not reassessed due to resource not being classified as Key or Significant in the Third Stage Consultation.		

Overview	
Resource number:	1/28
Resource name:	Around Broomy Hill and Areley Kings
Location	
OS sheet reference:	SO 87 SW, SO 77 SE
National grid ref:	380182, 270952
Resource description:	
Resource description:	<p>1st terrace (Powerhouse) sand and gravel. The BGS memoirs state that 1st terrace varies in depth between 6' (1.8m) and 14'8" (4.5m) in the Stourport area.</p> <p>This deposit is underlain by solid sand resources, which are assessed separately as resource area 1/32.</p> <p>Estimated resource depth based on midpoint of 1st terrace deposit in Stourport Area 1.8m to 4.5m = 3.2m</p>
Assessment of resource for the second consultation on MLP (Autumn 2013)	
Commentary:	A small narrow deposit with some built development in the west.
Resource area:	30ha
Resource depth:	Estimated 3.2m
Crude estimate of resource:	<p>Area: 30 ha x average depth: 3.2 m ÷ 2</p> <p>Estimated resource volume: 480,000 m³</p> <p>Estimated resource tonnage (at 2 t/m³): 960,000 tonnes</p>
Conclusion:	<p>Significant.</p> <p>Consider in defining areas of search.</p>
Assessment of resource for the Third Stage consultation on MLP (Spring 2015)	
Resource area:	30ha
Resource depth:	Estimated 3.2m
Revised estimate of resource:	<p>Area: 30 ha x average depth: 3.2 m ÷ 2</p> <p>Estimated resource volume: 480,000 m³</p> <p>Estimated resource tonnage (at 1.65 t/m³): 792,000 tonnes</p>

Conclusion: Significant.			
Assessment of resource for the Fourth Stage consultation on MLP (August 2018)			
This resource area has been split into areas 1/28 and 1/28a.			
Resource area 1/28		Resource area 1/28a	
Resource area:	25 ha	Commentary:	Screened out due to the following appendix A criterion: <ul style="list-style-type: none"> - Conservation Area - Listed Buildings - Settlement Boundaries
Resource depth:	Estimated 3.2m		
Revised estimate of resource:	Area: 25 ha x average depth: 3.2 m ÷ 2 Estimated resource volume: 400,000 m ³ Estimated resource tonnage (at 1.65 t/m³): 660,000 tonnes		
Conclusion:	Significant resource	Conclusion:	Compromised

Overview	
Resource number:	1/29
Resource name:	The Burf
Resource area:	10ha
Resource depth:	Estimated 6.3m
Location	
OS sheet reference:	SO 86 NW
National grid ref:	381154, 267623
<p>© Crown copyright and database rights 2018 Ordnance Survey 100024230 Derived from 1:50,000 scale BGS Digital Data under Licence 2001/125. Amended British Geological Survey © NERC</p>	
Resource description:	
Resource description:	<p>1st terrace (Powerhouse), 2nd terrace (Worcester) and 3rd terrace (Holt Heath) sand and gravel. Extensively worked by the Severn Valley Sand and Gravel Company Ltd. The 3rd terrace was worked to a depth of 8m and the 2nd and 1st terraces to between 4m and 5m.</p> <p>(Estimated resource depth based on mean average of a) 1st and 2nd terrace depths (mid-point of 4m to 5m = 4.5m) and b) 3rd terrace depths 8m = 6.3m)</p>
Assessment of resource for the second consultation on MLP (Autumn 2013)	
Commentary:	<p>A small resource area which is part of a deposit which has been extensively worked. Worked areas are not included as part of the resource area. This resource area is compromised by the settlement of The Burf with less than 10ha of the deposit remaining. The deposit also continues beyond the former working over 500m to the north east (resource area 1/3) and to the north west under Arley Kings (resource area 1/3a).</p>
Crude estimate of resource:	<p>Area: 10 ha x average depth: 6.3 m ÷ 2 Estimated resource volume: 315,000 m³ Estimated resource tonnage (at 2 t/m³): 630,000 tonnes</p>
Conclusion:	<p>Significant. Consider in defining areas of search.</p>
Assessment of resource for the Third Stage consultation on MLP (Spring 2015)	
Revised estimate of resource:	<p>Area: 10 ha x average depth: 6.3 m ÷ 2 Estimated resource volume: 315,000 m³ Estimated resource tonnage (at 1.65 t/m³): 519,750 tonnes</p>
Conclusion:	<p>Change to conclusion: Not significant.</p>

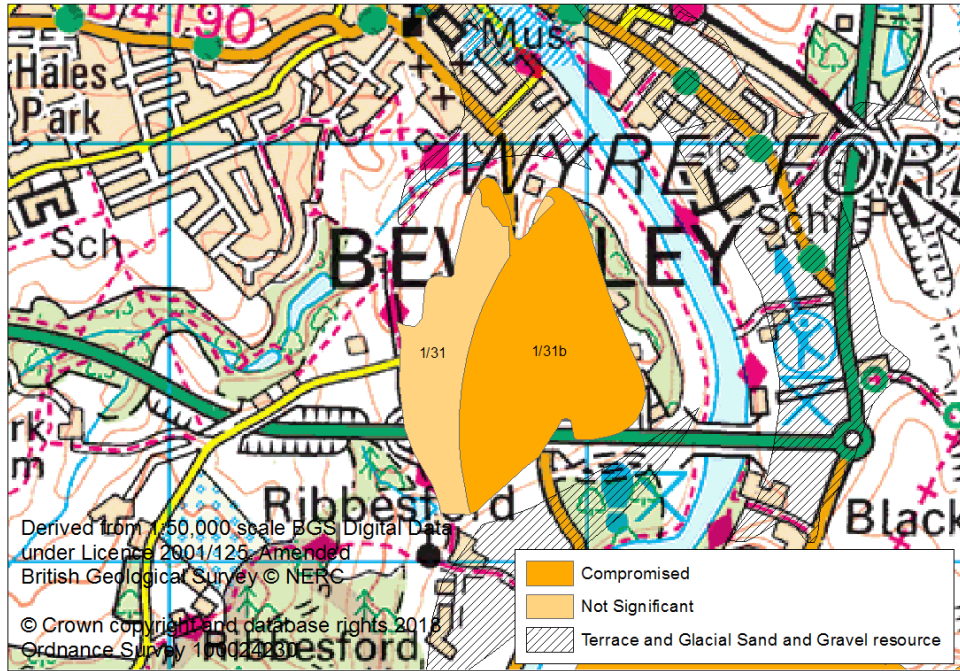
Assessment of resource for the Fourth Stage consultation on MLP (August 2018)

Not reassessed due to resource not being classified as Key or Significant in the Third Stage Consultation.

Overview		
Resource number:	1/30	
Resource name:	North of Great Witley	
Location		
OS sheet reference:	SO 76 NE, SO 77 SE	
National grid ref:	376472, 266762	
Resource description:		
Resource description:	Wildmoor formation solid sand. The memoir records that the junction between trias and old red sandstone is not easy to determine in this area. No information about thicknesses available for this area.	
Assessment of resource for the second consultation on MLP (Autumn 2013)		
Commentary:	A large resource area, a small section of which is overlain by the village of Great Witley in the west. The resource area is also intersected by roads and dispersed built development.	
Resource area:	130ha	
Resource depth:	Not known	
Crude estimate of resource:	Depth not known	
Conclusion:	Significant. Consider in defining areas of search.	
Assessment of resource for the Third Stage consultation on MLP (Spring 2015)		
Resource area:	130ha	
Resource depth:	Not known	
Revised estimate of resource:	No change to the assessment.	
Conclusion:	Significant.	

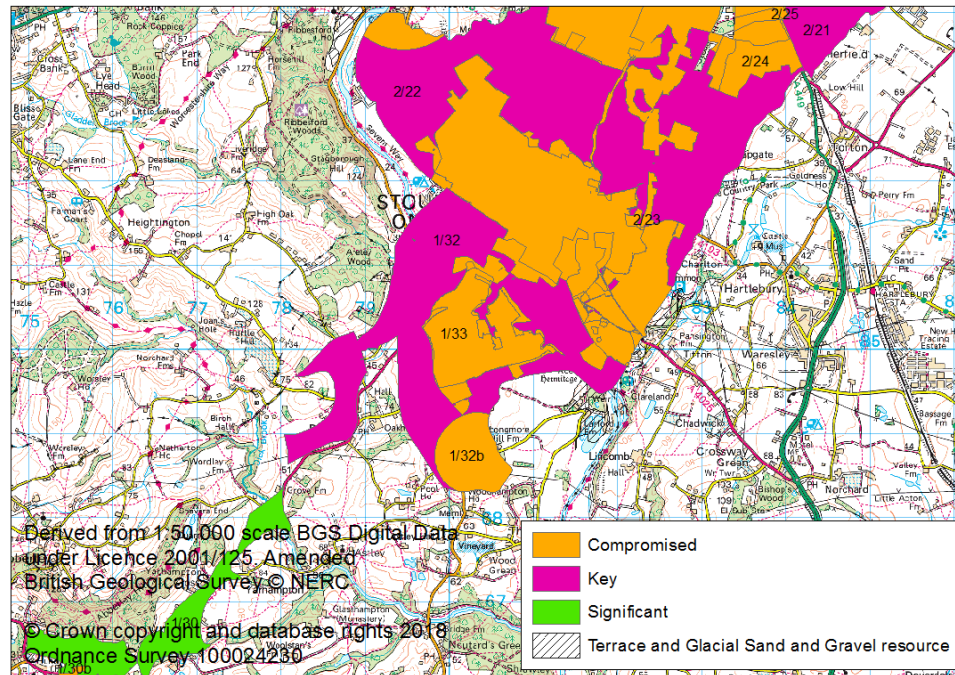
Assessment of resource for the Fourth Stage consultation on MLP (August 2018)			
This resource area has been split into areas 1/30 and 1/30a.			
Resource area 1/30		Resource area 1/30a	
Resource area:	126 ha	Commentary:	Screened out due to the following appendix A criterion: <ul style="list-style-type: none"> - Ancient Semi-Natural Woodland - Listed Buildings - Registered Park and Garden - Settlement Boundary
Resource depth:	Not known		
Revised estimate of resource:	Depth not known		
Conclusion:	Significant resource	Conclusion:	Compromised

Overview	
Resource number:	1/31
Resource name:	Red Hill
Location	
OS sheet reference:	SO 77 SE
National grid ref:	378823, 274503



Resource description:	
Resource description:	Kidderminster formation solid sand. Exposures in this area show the interbedding of pebbly sandstones with bands of breccia. No information on depths available for this location in the BGS memoirs.
Assessment of resource for the second consultation on MLP (Autumn 2013)	
Commentary:	A small resource area intersected by roads with some dispersed built development.
Resource area:	30ha
Resource depth:	Not known
Crude estimate of resource:	Depth not known.
Conclusion:	Not significant: Small deposit with no information to estimate the resource in this area. Not for consideration in defining areas of search.
Assessment of resource for the Third Stage consultation on MLP (Spring 2015)	
Resource area:	30ha
Resource depth:	Not known
Revised estimate of resource:	No change to the assessment.
Conclusion:	Not significant.
Assessment of resource for the Fourth Stage consultation on MLP (August 2018)	
Not reassessed due to resource not being classified as Key or Significant in the Third Stage Consultation.	

Overview	
Resource number:	1/32
Resource name:	South of Stourport
Location	
OS sheet reference:	SO 77 SE, SO 87 SW, SO 76 NE, SO 86 NW
National grid ref:	380071, 270083



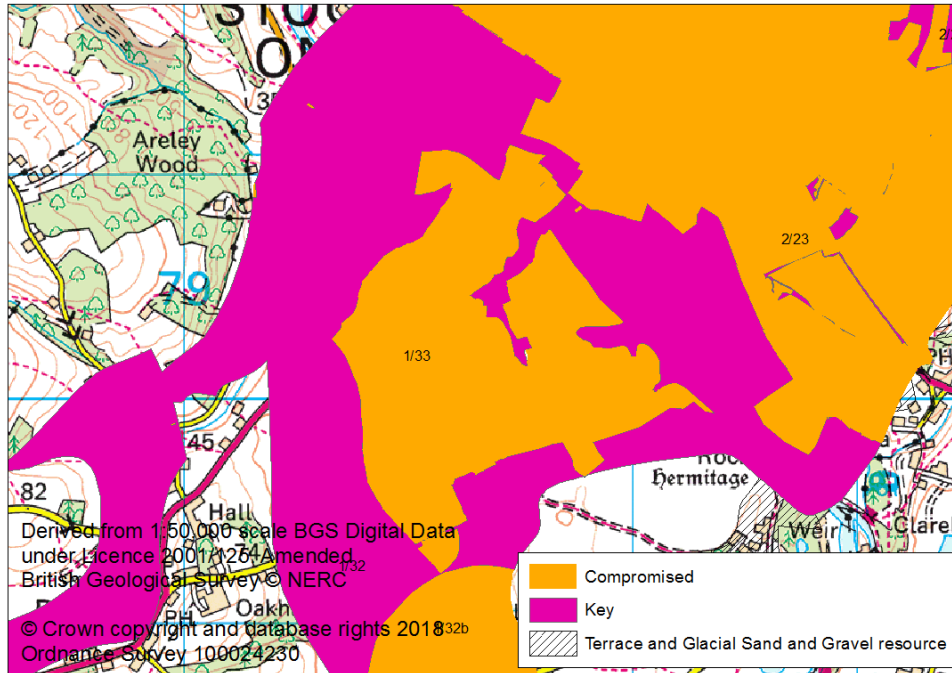
Resource description:	
Resource description:	<p>This resource area is mapped as Wildmoor Sandstone Formation.</p> <p>In this part of the county there are large areas of Wildmoor Formation and Kidderminster Formation solid sand of considerable geological complexity and although the resource area is mapped as Wildmoor Formation there may be some overlap with the Kidderminster Formation.</p> <p>The Kidderminster and Wildmoor sandstones are partially by terrace and glacial sand and gravel deposits (assessed as resource areas 1/3 and 1/28).</p> <p>Wildmoor Formation</p> <p>The Wildmoor Formation is generally described as red-brown and orange, fine to medium grained, feldspathic sandstone with sparse, thin mudstone beds. Generally the formation is characterised by an absence of pebbles, in contrast to the Kidderminster Formation, although sparse pebbly stringers are recorded. The fine grain-size and soft, poorly cemented, nature of the sandstone in some areas made it ideal for exploitation as moulding sand for use in the foundry industry.</p> <p>The memoir states that the Wildmoor Sandstone Formation ranges in thickness from 90m-120m. There is some information about some sections of the deposit in this area:</p> <ul style="list-style-type: none"> Near Dunley: The outcrop of Wildmoor formation (Upper Mottled Sandstone) is capped to the west by

- an outlier of Bromsgrove sandstone faulted on its west side against the sandstone.
- To the south of the Gladder Brook there are exposures around Areley Kings and southwards to Longmore Hill Farm, Astley where the deposits are recorded as 454' (138.4m) thick.

(Estimated resource depth calculated as a mean average of: a) memoir range (median average of 90m to 120m = 105m), b) south of the Gladder Brook: 138.4m = 121.7m)

Assessment of resource for the second consultation on MLP (Autumn 2013)			
Commentary:	A large resource area intersected by roads, with some dispersed development. The deposit extends under the settlement of Areley Kings (assessed as resource area 1/33).		
Resource area:	490ha		
Resource depth:	Estimated 121.7m		
Crude estimate of resource:	Area: 490 ha x average depth: 121.7 m ÷ 2 Estimated resource volume: 298,165,000 m ³ Estimated resource tonnage (at 2 t/m³): 596,330,000 tonnes		
Conclusion:	Significant – key resource. Use to define areas of search.		
Assessment of resource for the Third Stage consultation on MLP (Spring 2015)			
Resource area:	490ha		
Resource depth:	Estimated 121.7m		
Revised estimate of resource:	Area: 490 ha x average depth: 121.7 m ÷ 2 Estimated resource volume: 298,165,000 m ³ Estimated resource tonnage (at 1.65 t/m³): 491,972,250 tonnes		
Conclusion:	Significant – key resource.		
Assessment of resource for the Fourth Stage consultation on MLP (August 2018)			
This resource area has been split into areas 1/32 and 1/32a.			
Resource area 1/32		Resource area 1/32a	
Resource area:	384 ha	Commentary:	Screened out due to the following appendix A criterion: <ul style="list-style-type: none"> - Allocated site in Wyre Forest Core Strategy - Conservation Area - Listed Buildings - Settlement Boundary
Resource depth:	Not known		
Revised estimate of resource:	Depth not known		
Conclusion:	Significant resource	Conclusion:	Compromised

Overview	
Resource number:	1/33
Resource name:	Areley Kings
Resource area:	123 ha
Resource depth:	Estimated 121.7m
Location	
OS sheet reference:	SO 76 NE, SO 77 SE, SO 86 NW, SO 87 SW
National grid ref:	380164, 270111



Resource description:

Resource description: This resource area is mapped as Wildmoor Sandstone Formation.

In this part of the county there are large areas of Wildmoor Formation and Kidderminster Formation solid sand of considerable geological complexity and although the resource area is mapped as Wildmoor Formation there may be some overlap with the Kidderminster Formation.

The Kidderminster and Wildmoor sandstones are partially but extensively overlain by terrace and glacial sand and gravel deposits (assessed as resource areas 1/3a and 43/1)

Wildmoor Formation

The Wildmoor Formation is generally described as red-brown and orange, fine to medium grained, feldspathic sandstone with sparse, thin mudstone beds. Generally the formation is characterised by an absence of pebbles, in contrast to the Kidderminster Formation, although sparse pebbly stringers are recorded. The fine grain-size and soft, poorly cemented, nature of the sandstone in some areas made it ideal for exploitation as moulding sand for use in the foundry industry.

The memoir states that the Wildmoor Sandstone Formation ranges in thickness from 90m-120m. There is some information about some sections of the deposit in this area:

- Near Dunley: The outcrop of Wildmoor formation (Upper Mottled Sandstone) is capped to the west by

- an outlier of Bromsgrove sandstone faulted on its west side against the sandstone.
- To the south of the Gladder Brook there are exposures around Areley Kings and southwards to Longmore Hill Farm, Astley where the deposits are recorded as 454' (138.4m) thick.

(Estimated resource depth calculated as a mean average of: a) memoir range (median average of 90m to 120m = 105m), b) south of the Gladder Brook: 138.4m = 121.7m)

Assessment of resource for the second consultation on MLP (Autumn 2013)	
Commentary:	A large resource area compromised by the development of Areley Kings.
Crude estimate of resource:	Area: 123 ha x average depth: 121.7 m ÷ 2 Estimated resource volume: 74,845,500 m ³ Estimated resource tonnage (at 2 t/m³): 149,691,000 tonnes
Conclusion:	Compromised by development.
Assessment of resource for the Third Stage consultation on MLP (Spring 2015)	
Revised estimate of resource:	Area: 123 ha x average depth: 121.7 m ÷ 2 Estimated resource volume: 74,845,500 m ³ Estimated resource tonnage (at 1.65 t/m³): 123,495,075 tonnes
Conclusion:	Compromised by development.
Assessment of resource for the Fourth Stage consultation on MLP (August 2018)	
Not reassessed due to resource not being classified as Key or Significant in the Third Stage Consultation.	