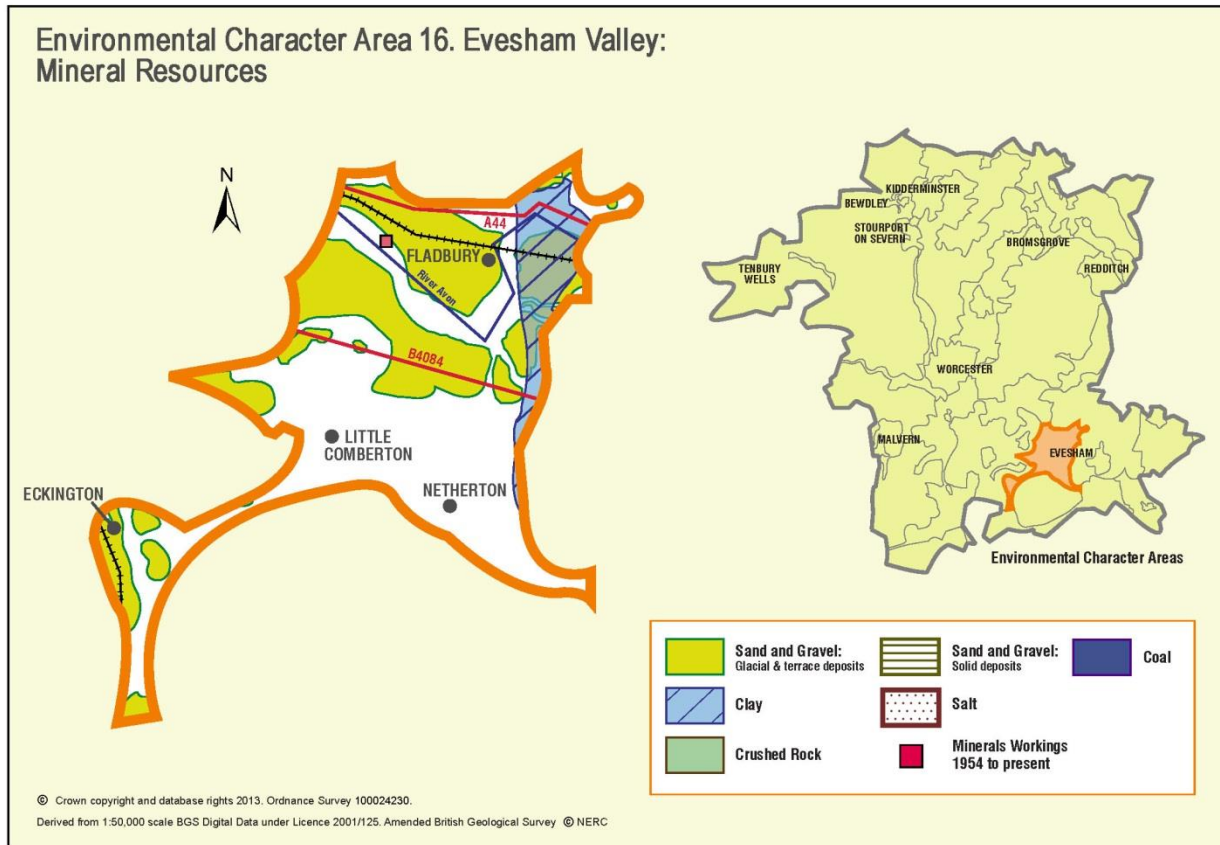


Appendix 16: Analysis of aggregate resources in ECA 16: Evesham Valley



ECA Summary for the Fourth Stage consultation on MLP (Winter 2018):

Sand and gravel

There are 25 resource areas identified for sand and gravel in Evesham Valley ECA:

- Key: 4
- Significant: 3
- Not significant: 5
- Compromised: 13

Crushed rock

There are no resource areas identified in Evesham Valley for crushed rock.

Non-aggregates

BGS data indicates that there are deposits of clay in this ECA.

Overview of resource assessment for ECA 16

Sand and gravel resource areas:

Resource number*	Second Stage Consultation		Third Stage Consultation		Fourth Stage Consultation		
	Original estimated resource tonnage (2 tonnes/m ³)	Significance	Revised estimate of resource tonnage (1.65 tonnes/m ³)	Significance	New resource number (where resource has been split)	Revised estimate of resource tonnage (1.65 tonnes/m ³)	Result
16/1	6,630,000	Key	5,469,750	Key	16/1	5,469,750	Key
					16/1c		Compromised
16/1 a	442,000	Compromised	364,650	Compromised	Not reassessed		
16/2	11,025,000	Key	9,095,625	Key	16/2	8,518,125	Key
					16/2b		Compromised
					16/2c		Compromised
16/2 a	735,000	Compromised	606,375	Compromised	Not reassessed		
16/2 b	525,000	Compromised	433,125	Compromised			
16/2 c	1,190,000	Compromised	981,750	Compromised			
16/3	Depth unknown	Not significant	Depth unknown	Not significant			
16/4	16,380,000	Key	15,513,500	Key	16/4	12,251,250	Key
					16/4b		Compromised
					16/4c		Compromised
16/5	697,000	Significant	575,025	Not significant	Not reassessed		
16/6	Depth unknown	Not significant	Depth unknown	Not significant			
16/7	Depth unknown	Not significant	Depth unknown	Not significant			
16/7a	Depth unknown	Compromised	Depth unknown	Compromised			
16/8	Depth unknown	Significant	Depth unknown	Significant	16/8	Depth unknown	Significant
					16/8b		Compromised
16/8a	Depth unknown	Compromised	Depth unknown	Compromised	Not reassessed		
16/9	2,392,000	Key	1,973,400	Significant	16/9	1,587,300	Significant
					16/9b		Compromised
16/9a	520,000	Compromised	429,000	Compromised	Not reassessed		
16/10	Depth unknown	Not significant	Depth unknown	Not significant			
16/11	Depth unknown	Significant	Depth unknown	Significant	16/11	Depth unknown	Significant
					16/11b		Compromised
16/12	3,304,000	Key	2,725,800	Key	16/12	2,725,800	Key
					16/12b		Compromised

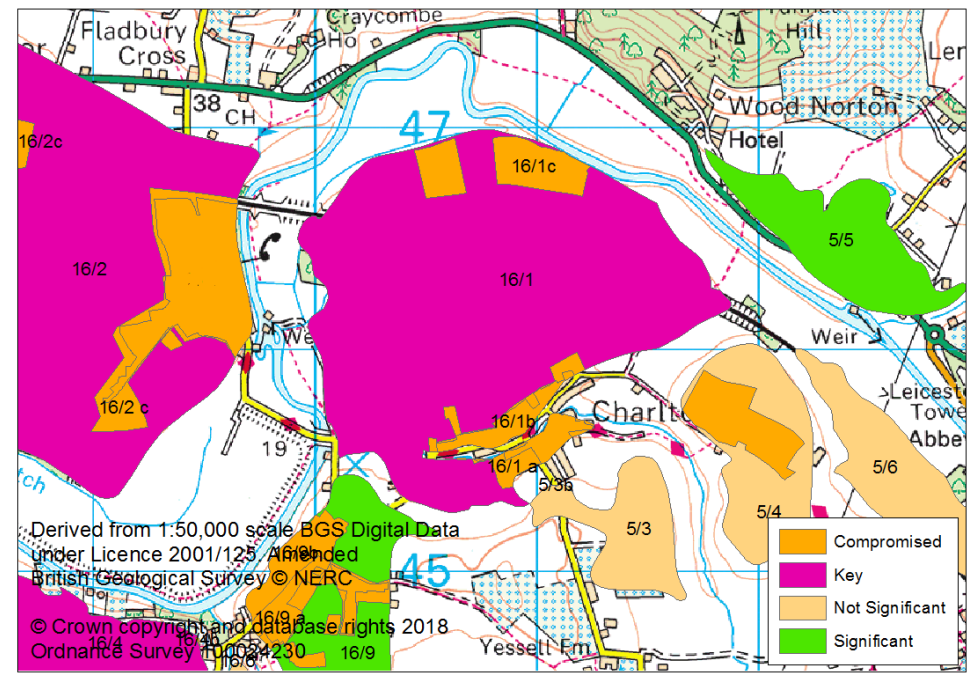
Overview	
Resource number:	16/1
Resource name:	Charlton 2 nd Terrace
Resource area:	195ha
Resource depth:	Estimated 3.4m
Location	
OS sheet reference:	SP 04 NW, SO 94 NE
National grid ref:	400754, 246243
Resource description:	
Resource description:	2 nd terrace sand and gravel. This deposit is divided at two levels and composed of reddish brown quartzose sands with bunter pebbles and flints. The terrace has been worked in a small pit south-east of Fernhill Farm where between 3 and 3.7m of sand and gravel are exposed on the edge of the now overgrown working. (Estimated resource depth based on median average of 3.4m)
Assessment of resource for the second consultation on MLP (Autumn 2013)	
Commentary:	A medium-sized resource area, intersected by a railway line with small-scale isolated development in the resource area. The deposit extends under Charlton village to the south-east, this section is assessed as resource area 16/1a.
Crude estimate of resource:	Area: 195ha x average depth: 3.4m / 2 Estimated resource volume: 3,315,000m ³ Estimated resource tonnage (at 2 t/m³): 6,630,000 tonnes
Conclusion:	Significant – key resource. Use to define areas of search.
Assessment of resource for the Third Stage consultation on MLP (Spring 2015)	
Revised estimate of resource:	Area: 195ha x average depth: 3.4m / 2 Estimated resource volume: 3,315,000m ³ Estimated resource tonnage (at 1.65 t/m³): 5,469,750 tonnes
Conclusion:	Significant – key resource.
Assessment of resource for the Fourth Stage consultation on MLP (August 2018)	

Resource area:	195 ha
Resource depth:	Estimated 3.4m
Revised estimate of resource:	Area: 195 ha x average depth: 3.4 ÷ 2 Estimated resource volume: 3,315,000m ³ Estimated resource tonnage (at 1.65 t/m³): 5,469,750 tonnes
Conclusion:	Key resource

Assessment of resource for the Fourth Stage consultation on MLP (November 2018)

This resource area has been split into areas 16/1 and 16/1c.			
Resource area 16/1		Resource area 16/1c	
Resource area:	195 ha	Commentary:	Screened out due to the following appendix A criterion: - Scheduled Ancient Monument
Resource depth:	Estimated 3.4m		
Revised estimate of resource:	Area: 195ha x average depth: 3.4m / 2 Estimated resource volume: 3,315,000m ³ Estimated resource tonnage (at 1.65 t/m³): 5,469,750 tonnes		
Conclusion:	Key resource	Conclusion:	Compromised

Overview	
Resource number:	16/1 a and 16/1b
Resource name:	Charlton 2 nd Terrace a)
Resource area:	13 ha
Resource depth:	Estimated 3.4m
Location	
OS sheet reference:	SP 04 NW, SO 94 NE
National grid ref:	400933, 245643



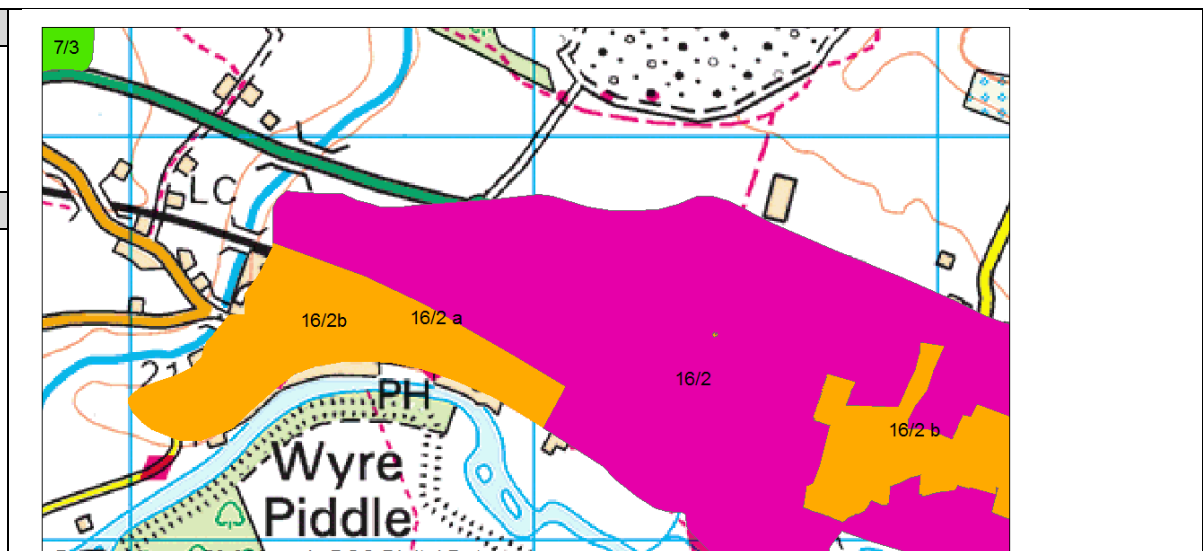
Resource description:
Resource description: 2nd terrace sand and gravel. This deposit is divided at two levels and composed of reddish brown quartzose

	sands with bunter pebbles and flints. The terrace has been worked in a small pit south-east of Fernhill Farm where between 3 and 3.7m of sand and gravel are exposed on the edge of the now overgrown working. (Estimated resource depth based on median average of 3.4m)
Assessment of resource for the second consultation on MLP (Autumn 2013)	
Commentary:	A small resource area compromised by Charlton village. The deposit extends beyond the village to the north and west, this section is considered separately as resource area 16/1.
Crude estimate of resource:	Area: 13ha x average depth: 3.4m / 2 Estimated resource volume: 221,000m ³ Estimated resource tonnage (at 2 t/m³): 442,000 tonnes
Conclusion:	Compromised by development.
Assessment of resource for the Third Stage consultation on MLP (Spring 2015)	
Revised estimate of resource:	Area: 13ha x average depth: 3.4m / 2 Estimated resource volume: 221,000m ³ Estimated resource tonnage (at 1.65 t/m³): 364,650 tonnes
Conclusion:	Compromised by development.
Assessment of resource for the Fourth Stage consultation on MLP (Spring 2018)	
Not reassessed due to resource not being classified as Key or Significant in the Third Stage Consultation	

Overview	
Resource number:	16/2
Resource name:	Fladbury
Resource area:	315 ha
Resource depth:	Estimated 3.5m
Location	
OS sheet reference:	SO 94 NE
National grid ref:	398327, 246694
Resource description:	
Resource description:	1 st terrace (Bretford) and 2 nd terrace (Wasperton) sand and gravel. The 1 st terrace generally consists of a gravelly loam with varying amounts of reddish sand. Part of this deposit has previously been worked, at the Lower Moor pit, where between 2.4 and 4.6m of sand with gravelly layers were exposed consisting primarily of bunter pebbles and flints. (Estimated resource depth based on median average of 3.5m)
Assessment of resource for the second consultation on MLP (Autumn 2013)	
Commentary:	A large resource area with some development. The deposit continues under the villages of Wyre Piddle (assessed as resource area 16/2a), Lower Moor (assessed as resource area 16/2b) and Fladbury (assessed as resource area 16/2c). The deposit has previously been worked at Lower Moor Pit and this section is not included as part of the resource area.
Crude estimate of resource:	Area: 315ha x average depth: 3.5m / 2 Estimated resource volume: 5,512,500m ³ Estimated resource tonnage (at 2 t/m³): 11,025,000 tonnes
Conclusion:	Significant – key resource. Use to define areas of search.
Assessment of resource for the Third Stage consultation on MLP (Spring 2015)	
Revised estimate of resource:	Area: 315ha x average depth: 3.5m / 2 Estimated resource volume: 5,512,500m ³ Estimated resource tonnage (at 1.65 t/m³): 9,095,625 tonnes
Conclusion:	Significant – key resource.

Assessment of resource for the Fourth Stage consultation on MLP (August 2018)			
This resource area has been split into areas 16/2 and 16/2b.			
Resource area 16/2		Resource area 16/2b	
Resource area:	312 ha	Commentary:	Screened out due to the following appendix A criterion: <ul style="list-style-type: none"> - Allocated site in South Worcestershire Development Plan - Conservation Area - Listed Buildings - Settlement boundary
Resource depth:	Estimated 3.5m		
Revised estimate of resource:	Area: 312 ha x average depth: 3.5m ÷ 2 Estimated resource volume: 5,460,000 m ³ Estimated resource tonnage (at 1.65 t/m³): 9,009,000 tonnes		
Conclusion:	Key resource	Conclusion:	Compromised
Assessment of resource for the Fourth Stage consultation on MLP (November 2018)			
This resource area has been split into areas 16/2 and 16/2c.			
Resource area 16/2		Resource area 16/2c	
Resource area:	295 ha	Commentary:	Screened out due to the following appendix A criterion: <ul style="list-style-type: none"> - Scheduled Ancient Monument
Resource depth:	Estimated 3.5m		
Revised estimate of resource:	Area: 295 ha x average depth: 3.5m ÷ 2 Estimated resource volume: 5,162,500 m ³ Estimated resource tonnage (at 1.65 t/m³): 8,518,125 tonnes		
Conclusion:	Key resource	Conclusion:	Compromised

Overview	
Resource number:	16/2a
Resource name:	Fladbury a)
Resource area:	21 ha
Resource depth:	Estimated 3.5m
Location	
OS sheet reference:	SO 94 NE
National grid ref:	396487, 247474



Resource description:	
Resource description:	1 st terrace (Bretford) and 2 nd terrace (Wasperton) sand and gravel. The 1 st terrace generally consists of a gravelly loam with varying amounts of reddish sand. Part of this deposit has previously been worked, at the Lower Moor pit, where between 2.4 and 4.6m of sand with gravelly layers were exposure consisting primarily of bunter pebbles and flints. (Estimated resource depth based on median average of 3.5m)
Assessment of resource for the second consultation on MLP (Autumn 2013)	
Commentary:	A small resource area compromised by the village of Wyre Piddle. The deposit continues to the north and east of Wyre Piddle (assessed as resource area 16/2) and under the villages of Lower Moor (assessed as resource area 16/2b) and Fladbury (assessed as resource area 16/2c) and has previously been worked at Lower Moor Pit.
Crude estimate of resource:	Area: 21ha x average depth: 3.5m / 2 Estimated resource volume: 367,500m ³ Estimated resource tonnage (at 2 t/m³): 735,000 tonnes
Conclusion:	Compromised by development.
Assessment of resource for the Third Stage consultation on MLP (Spring 2015)	
Revised estimate of resource:	Area: 21ha x average depth: 3.5m / 2 Estimated resource volume: 367,500m ³ Estimated resource tonnage (at 1.65 t/m³): 606,375 tonnes
Conclusion:	Compromised by development.
Assessment of resource for the Fourth Stage consultation on MLP (Spring 2018)	
Not reassessed due to resource not being classified as Key or Significant in the Third Stage Consultation	

Overview		
Resource number:	16/2b	
Resource name:	Fladbury b)	
Resource area:	15 ha	
Resource depth:	Estimated 3.5m	
Location		
OS sheet reference:	SO 94 NE	
National grid ref:	398327, 246694	
Resource description:		
Resource description:	<p>1st terrace (Bretford) and 2nd terrace (Wasperton) sand and gravel. The 1st terrace generally consists of a gravelly loam with varying amounts of reddish sand. Part of this deposit has previously been worked, at the Lower Moor pit, where between 2.4 and 4.6m of sand with gravelly layers were exposure consisting primarily of bunter pebbles and flints. (Estimated resource depth based on median average of 3.5m)</p>	
Assessment of resource for the second consultation on MLP (Autumn 2013)		
Commentary:	<p>A small resource area compromised by the village of Lower Moor. The deposit extends beyond this (assessed as resource area 16/2), under the villages of Wyre Piddle (assessed as resource area 16/2a) and Fladbury (assessed as resource area 16/2c). The deposit has previously been worked at Lower Moor Pit.</p>	
Crude estimate of resource:	<p>Area: 15ha x average depth: 3.5m / 2 Estimated resource volume: 262,500m³ Estimated resource tonnage (at 2 t/m³): 525,000 tonnes</p>	
Conclusion:	Compromised by development.	
Assessment of resource for the Third Stage consultation on MLP (Spring 2015)		
Revised estimate of resource:	<p>Area: 15ha x average depth: 3.5m / 2 Estimated resource volume: 262,500m³ Estimated resource tonnage (at 1.65 t/m³): 433,125 tonnes</p>	
Conclusion:	Compromised by development.	

Assessment of resource for the Fourth Stage consultation on MLP (Spring 2018)

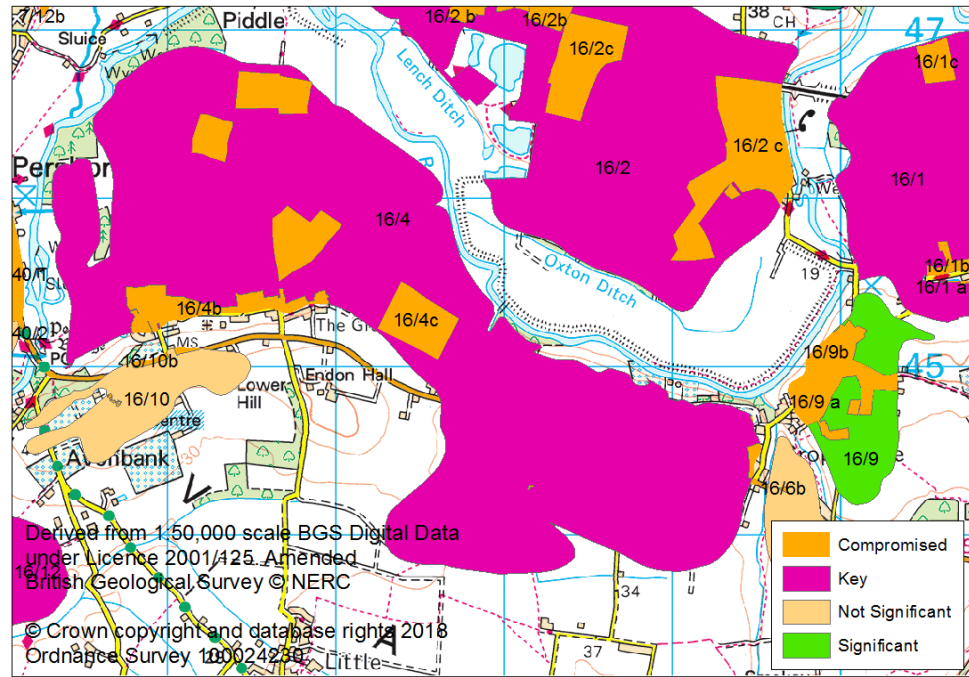
Not reassessed due to resource not being classified as Key or Significant in the Third Stage Consultation

Overview	
Resource number:	16/2c
Resource name:	Fladbury c)
Resource area:	34 ha
Resource depth:	Estimated 3.5m
Location	
OS sheet reference:	SO 94 NE
National grid ref:	399400, 246248
<p>Derived from 1:50,000 scale BGS Digital Data under Licence 2001/125. Amended British Geological Survey © NERC © Crown copyright and database rights 2018 Ordnance Survey 100024230</p>	
Resource description:	
Resource description:	1 st terrace (Bretford) and 2 nd terrace (Wasperton) sand and gravel. The 1 st terrace generally consists of a gravelly loam with varying amounts of reddish sand. Part of this deposit has previously been worked, at the Lower Moor pit, where between 2.4 and 4.6m of sand with gravelly layers were exposure consisting primarily of bunter pebbles and flints. (Estimated resource depth based on median average of 3.5m)
Assessment of resource for the second consultation on MLP (Autumn 2013)	
Commentary:	A small resource area which is compromised by the village of Fladbury. The deposit extends beyond this (assessed as resource area 16/2), under the villages of Wyre Piddle (assessed as resource area 16/2a) and Lower Moor (assessed as resource area 16/2b). The deposit has previously been worked at Lower Moor Pit.
Crude estimate of resource:	Area: 34ha x average depth: 3.5m / 2 Estimated resource volume: 595,000m ³ Estimated resource tonnage (at 2 t/m³): 1,190,000 tonnes
Conclusion:	Compromised by development.
Assessment of resource for the Third Stage consultation on MLP (Spring 2015)	
Revised estimate of resource:	Area: 34ha x average depth: 3.5m / 2 Estimated resource volume: 595,000m ³

Estimated resource tonnage (at 1.65 t/m³): 981,750 tonnes	
Conclusion:	Compromised by development.
Assessment of resource for the Fourth Stage consultation on MLP (Spring 2018)	
Not reassessed due to resource not being classified as Key or Significant in the Third Stage Consultation	

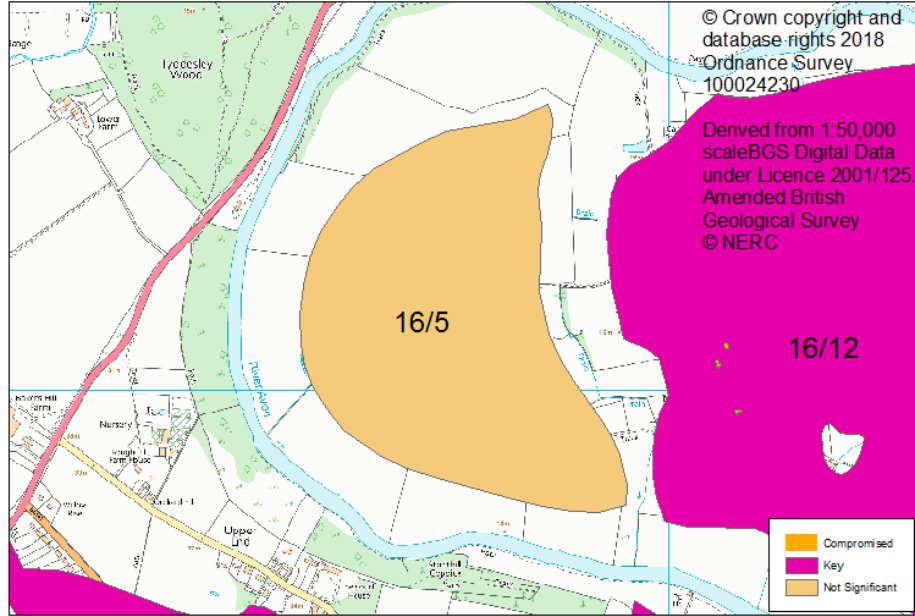
Overview	
Resource number:	16/3
Resource name:	Eckington Field Farm
Resource area:	29ha
Resource depth:	Not known
Location	
OS sheet reference:	SO 94 SW
National grid ref:	393154, 240692
Resource description:	
Resource description:	5 th terrace (Persnore) sand and gravel. No information on depth available.
Assessment of resource for the second consultation on MLP (Autumn 2013)	
Commentary:	A small deposit intersected by a road with adjacent small scale development.
Crude estimate of resource:	Depth not known.
Conclusion:	Not significant: Small deposit with no information to estimate the resource in this area. Not for consideration in defining areas of search.
Assessment of resource for the Third Stage consultation on MLP (Spring 2015)	
Revised estimate of resource:	No change to the assessment.
Conclusion:	Not significant.
Assessment of resource for the Fourth Stage consultation on MLP (Spring 2018)	
Not reassessed due to resource not being classified as Key or Significant in the Third Stage Consultation	

Overview	
Resource number:	16/4
Resource name:	Wick
Resource area:	546ha
Resource depth:	Estimated 3m
Location	
OS sheet reference:	SO 94 NE
National grid ref:	397298, 245294



Resource description:	
Resource description:	1 st terrace (Bretford), 2 nd terrace (Wasperton), 3 rd terrace (New Inn), and 4 th terrace (Ailstone) sand and gravel. Field surface debris shows bunter quartzites and some flints in brown sandy soils. A pit at Old Fallows, now infilled, formerly exposed 3m of sand and quartzose flinty gravel on lias clay. (Estimated resource depth based on exposure of 3m).
Assessment of resource for the second consultation on MLP (Autumn 2013)	
Commentary:	A large deposit with small-scale dispersed development across the resource area.
Crude estimate of resource:	Area: 546ha x average depth: 3m / 2 Estimated resource volume: 8,190,000m ³ Estimated resource tonnage (at 2 t/m³): 16,380,000 tonnes
Conclusion:	Significant – key resource. Use to define areas of search.
Assessment of resource for the Third Stage consultation on MLP (Spring 2015)	
Revised estimate of resource:	Area: 546ha x average depth: 3m / 2 Estimated resource volume: 8,190,000m ³ Estimated resource tonnage (at 1.65 t/m³): 13,513,500 tonnes
Conclusion:	Significant – key resource.
Assessment of resource for the Fourth Stage consultation on MLP (August 2018)	
This resource area has been split into areas 16/4 and 16/4b.	

Resource area 16/4		Resource area 16/4b	
Resource area:	531 ha	Commentary:	Screened out due to the following appendix A criterion: <ul style="list-style-type: none"> - Conservation Area - Listed Buildings - Settlement boundary
Resource depth:	Estimated 3m		
Revised estimate of resource:	Area: 531 ha x average depth: 3m ÷ 2 Estimated resource volume: 7,965,000 m ³ Estimated resource tonnage (at 1.65 t/m³): 13,142,250 tonnes		
Conclusion:	Key resource	Conclusion:	Compromised
Assessment of resource for the Fourth Stage consultation on MLP (November 2018)			
This resource area has been split into areas 16/4 and 16/4c.			
Resource area 16/4		Resource area 16/4c	
Resource area:	495 ha	Commentary:	Screened out due to the following appendix A criterion: <ul style="list-style-type: none"> - Scheduled Ancient Monument
Resource depth:	Estimated 3m		
Revised estimate of resource:	Area: 495 ha x average depth: 3m ÷ 2 Estimated resource volume: 7,425,000 m ³ Estimated resource tonnage (at 1.65 t/m³): 12,251,250 tonnes		
Conclusion:	Key resource	Conclusion:	Compromised

Overview	
Resource number:	16/5
Resource name:	West of Pensham
Resource area:	41ha
Resource depth:	1.7m
Location	
OS sheet reference:	SO 94 SW
National grid ref:	393520, 244150
	
Resource description:	
Resource description:	<p>1st terrace (Bretford) sand and gravel. This area was the site of an application by Western Aggregates Ltd dated April 1970 which identified an average thickness of 1.71m and that "the stone content is approximately 50% to 60%, which is very good for this area, and with a silt content reasonably low at between 4% and 7%." The aggregate was seen to be predominantly quartzite with some flints, cherts and rubbly limestone, the sand was mainly quartz grains. The application was refused by the Secretary of State in November 1972.</p> <p>(Estimated resource depth based on application depth average of 1.7m)</p>
Assessment of resource for the second consultation on MLP (Autumn 2013)	
Commentary:	A small deposit with no built development in the resource area.
Crude estimate of resource:	<p>Area: 41ha x average depth: 1.7m / 2</p> <p>Estimated resource volume: 348,500 m³</p> <p>Estimated resource tonnage (at 2 t/m³): 697,000 tonnes</p>
Conclusion:	<p>Significant.</p> <p>Consider in defining areas of search.</p>
Assessment of resource for the Third Stage consultation on MLP (Spring 2015)	
Revised estimate of resource:	<p>Area: 41ha x average depth: 1.7m / 2</p> <p>Estimated resource volume: 348,500 m³</p> <p>Estimated resource tonnage (at 1.65 t/m³): 575,025 tonnes</p>
Conclusion:	Change to conclusion: Not significant.
Assessment of resource for the Fourth Stage consultation on MLP (Spring 2018)	

Not reassessed due to resource not being classified as Key or Significant in the Third Stage Consultation

Overview		
Resource number:	16/6	
Resource name:	South Crophorne	
Resource area:	31 ha	
Resource depth:	Not known	
Location		
OS sheet reference:	SO 94 SE	
National grid ref:	399774, 244042	
Resource description:		
Resource description:	3 rd terrace (New Inn) sand and gravel. No information on thicknesses available.	
Assessment of resource for the second consultation on MLP (Autumn 2013)		
Commentary:	A small deposit with small-scale dispersed development across the north and east of the resource area.	
Crude estimate of resource:	Depth not known.	
Conclusion:	Not significant: Small deposit with no information to estimate the resource in this area. Not for consideration in defining areas of search.	
Assessment of resource for the Third Stage consultation on MLP (Spring 2015)		
Revised estimate of resource:	No change to the assessment.	
Conclusion:	Not significant.	
Assessment of resource for the Fourth Stage consultation on MLP (Spring 2018)		
Not reassessed due to resource not being classified as Key or Significant in the Third Stage Consultation		

Overview	
Resource number:	16/7
Resource name:	Eckington East
Resource area:	12ha
Resource depth:	Not known
Location	
OS sheet reference:	SO 94 SW
National grid ref:	392929, 241422
Resource description:	
Resource description:	5 th terrace (Persnore) sand and gravel. No information on thicknesses available.
Assessment of resource for the second consultation on MLP (Autumn 2013)	
Commentary:	A small resource area, with some small scale dispersed development. The deposit extends to the north west under the village of Eckington, this section is considered as resource area 16/7a.
Crude estimate of resource:	Depth not known.
Conclusion:	Not significant: Small deposit with no information to estimate the resource in this area. Not for consideration in defining areas of search.
Assessment of resource for the Third Stage consultation on MLP (Spring 2015)	
Revised estimate of resource:	No change to the assessment.
Conclusion:	Not significant.
Assessment of resource for the Fourth Stage consultation on MLP (Spring 2018)	
Not reassessed due to resource not being classified as Key or Significant in the Third Stage Consultation	

Overview	
Resource number:	16/7a
Resource name:	Eckington East a)
Resource area:	6ha
Resource depth:	Not known
Location	
OS sheet reference:	SO 94 SW
National grid ref:	392929, 241422
Resource description:	
Resource description:	5 th terrace (Persnore) sand and gravel. No information on thicknesses available.
Assessment of resource for the second consultation on MLP (Autumn 2013)	
Commentary:	A small resource area compromised by the village of Eckington. The deposit extends to the south east, this section considered as resource area 16/7.
Crude estimate of resource:	Depth not known.
Conclusion:	Compromised by development.
Assessment of resource for the Third Stage consultation on MLP (Spring 2015)	
Revised estimate of resource:	No change to the assessment.
Conclusion:	Compromised by development.
Assessment of resource for the Fourth Stage consultation on MLP (Spring 2018)	
Not reassessed due to resource not being classified as Key or Significant in the Third Stage Consultation	

Overview	
Resource number:	16/8
Resource name:	Eckington
Resource area:	124ha
Resource depth:	Not known.
Location	
OS sheet reference:	SO 94 SW & SO 93 NW
National grid ref:	392335, 240397
Resource description:	
Resource description:	2 nd terrace (Wasperton) and 3 rd terrace (New Inn) sand and gravel. No exposures. The 2 nd terrace consists of sand with bunter, flint and Jurassic limestone pebbles.
Assessment of resource for the second consultation on MLP (Autumn 2013)	
Commentary:	A medium-sized resource area intersected by a railway line, with small-scale dispersed development across the resource area. The deposit continues under the village of Eckington, this section of the deposit is considered as resource area 16/8a.
Crude estimate of resource:	Depth not known
Conclusion:	Significant. Consider in defining areas of search.
Assessment of resource for the Third Stage consultation on MLP (Spring 2015)	
Revised estimate of resource:	No change to the assessment.
Conclusion:	Significant.
Assessment of resource for the Fourth Stage consultation on MLP (August 2018)	
This resource area has been split into areas 16/8 and 16/8b.	
Resource area 16/8	
Resource area:	108 ha
Resource depth:	Depth not known
Resource area 16/8b	
Commentary:	Screened out due to the following appendix A criterion: - Allocated site in South Worcestershire

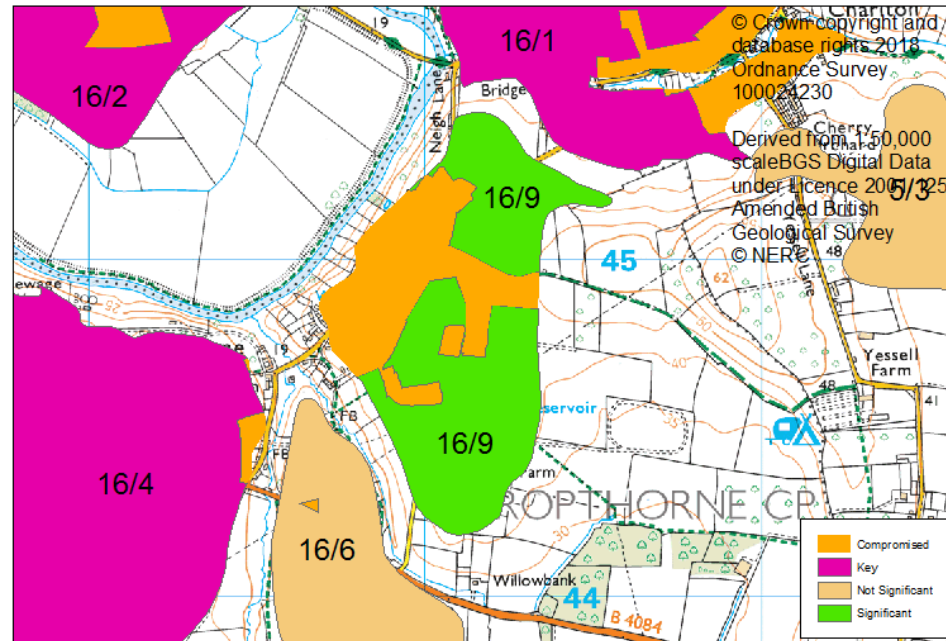
Revised estimate of resource:	Depth not known		Development Plan - Area of Outstanding Natural Beauty - Conservation Area - Listed Buildings - Settlement boundary
Conclusion:	Significant resource	Conclusion:	Compromised

Overview	
Resource number:	16/8a
Resource name:	Eckington a)
Resource area:	26ha
Resource depth:	Not known
Location	
OS sheet reference:	SO 94 SW & SO 93 NW
National grid ref:	392230, 241326
Resource description:	
Resource description:	2 nd river terrace (Wasperton) and 3 rd river terrace (New Inn) sand and gravel. No exposures. The 2 nd terrace consists of sand with bunter, flint and Jurassic limestone pebbles.
Assessment of resource for the second consultation on MLP (Autumn 2013)	
Commentary:	A small resource area compromised by the village of Eckington. The deposit continues to the north and south of the village (considered as resource area 16/8).
Crude estimate of resource:	Depth not known
Conclusion:	Compromised by development.
Assessment of resource for the Third Stage consultation on MLP (Spring 2015)	
Revised estimate of resource:	No change to the assessment.
Conclusion:	Compromised by development.
Assessment of resource for the Fourth Stage consultation on MLP (Spring 2018)	
Not reassessed due to resource not being classified as Key or Significant in the Third Stage Consultation	

Overview		
Resource number:	16/9	
Resource name:	North Crophorne	
Resource area:	46ha	
Resource depth:	Estimated 5.2m	
Location		
OS sheet reference:	SO 04 SW	
National grid ref:	400091, 244822	
Resource description:		
Resource description:	<p>4th terrace (Ailstone) sand and gravel. A lias clay occurs at less than 0.2m from the surface in the west of the resource. In this area at least the floor of the terrace would appear to be uneven. Abundant bunter and flint pebbles occur as surface debris in sandy and loamy soils. A bore hole in the village recorded 5.2m of gravel beneath 0.3m of cover. (Estimated resource depth based on borehole depth of 5.2m)</p>	
Assessment of resource for the second consultation on MLP (Autumn 2013)		
Commentary:	A medium-sized resource area, which has significant development across parts of the area. The central area of the deposit is overlain by Crophorne village, this section of the deposit is considered as resource area 16/9a.	
Crude estimate of resource:	Area: 46ha x average depth: 5.2m / 2 Estimated resource volume: 1,196,000m ³ Estimated resource tonnage (at 2 t/m³): 2,392,000 tonnes	
Conclusion:	Significant – key resource. Use to define areas of search.	
Assessment of resource for the Third Stage consultation on MLP (Spring 2015)		
Revised estimate of resource:	Area: 46ha x average depth: 5.2m / 2 Estimated resource volume: 1,196,000m ³ Estimated resource tonnage (at 1.65 t/m³): 1,973,400 tonnes	
Conclusion:	Change to conclusion: Significant.	
Assessment of resource for the Fourth Stage consultation on MLP (August 2018)		

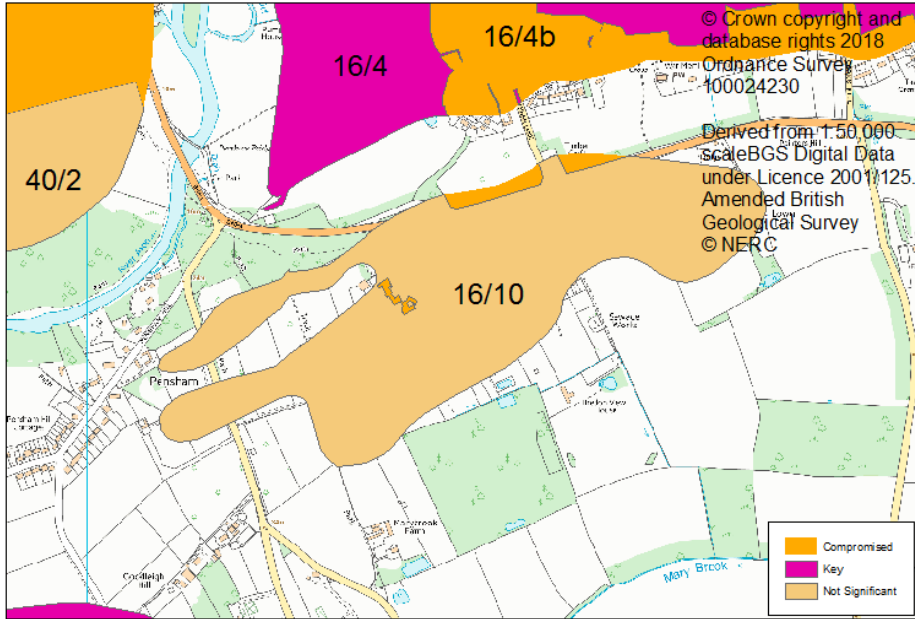
This resource area has been split into areas 16/9 and 16/9b.			
Resource area 16/9		Resource area 16/9b	
Resource area:	37 ha	Commentary:	Screened out due to the following appendix A criterion: <ul style="list-style-type: none"> - Allocated site in South Worcestershire Development Plan - Conservation Area - Listed Buildings - Settlement boundary
Resource depth:	Estimated 5.2m		
Revised estimate of resource:	Area: 37 ha x average depth: 5.2m ÷ 2 Estimated resource volume: 962,000 m ³ Estimated resource tonnage (at 1.65 t/m³): 1,587,300 tonnes		
Conclusion:	Significant resource	Conclusion:	Compromised

Overview	
Resource number:	16/9 a
Resource name:	North Cropthorne a)
Resource area:	10ha
Resource depth:	Estimated 5.2m
Location	
OS sheet reference:	SO 04 SW
National grid ref:	400005, 244868



Resource description:	
Resource description:	4 th terrace (Ailstone) sand and gravel. A lias clay occurs at less than 0.2m from the surface in the west of the resource. In this area at least the floor of the terrace would appear to be uneven. Abundant bunter and flint pebbles occur as surface debris in sandy and loamy soils. A bore hole in the village recorded 5.2m of gravel beneath 0.3m of cover. (Estimated resource depth based borehole depth of 5.2m)
Assessment of resource for the second consultation on MLP (Autumn 2013)	
Commentary:	A small resource area compromised by the village of Cropthorne. The deposit extends to the north and south of the village, these sections are considered as resource area 16/9.

Crude estimate of resource:	Area: 10ha x average depth: 5.2m / 2 Estimated resource volume: 260,000m ³ Estimated resource tonnage (at 2 t/m³): 520,000 tonnes
Conclusion:	Compromised by development.
Assessment of resource for the Third Stage consultation on MLP (Spring 2015)	
Revised estimate of resource:	Area: 10ha x average depth: 5.2m / 2 Estimated resource volume: 260,000m ³ Estimated resource tonnage (at 1.65 t/m³): 429,000 tonnes
Conclusion:	Compromised by development.
Assessment of resource for the Fourth Stage consultation on MLP (Spring 2018)	
Not reassessed due to resource not being classified as Key or Significant in the Third Stage Consultation	

Overview	
Resource number:	16/10
Resource name:	Pershore College of Horticulture
Resource area:	39 ha
Resource depth:	Not known
Location	
OS sheet reference:	SO 94 SE
National grid ref:	395828, 244811
 <p>© Crown copyright and database rights 2018 Ordnance Survey 100024230 Derived from 1:50,000 scale BGS Digital Data under Licence 2001/125. Amended British Geological Survey © NERC</p> <p>Legend: ■ Compromised ■ Key ■ Not Significant</p>	
Resource description:	
Resource description:	4 th terrace (Ailstone) sand and gravel. No information on thicknesses available.
Assessment of resource for the second consultation on MLP (Autumn 2013)	
Commentary:	A small deposit with concentrated development in the centre of the resource and some small-scale development on the periphery.
Crude estimate of resource:	Depth not known.
Conclusion:	Not significant: Small deposit with no information to estimate the resource in this area.

Not for consideration in defining areas of search.

Assessment of resource for the Third Stage consultation on MLP (Spring 2015)

Revised estimate of resource: No change to the assessment.

Conclusion: Not significant.

Assessment of resource for the Fourth Stage consultation on MLP (Spring 2018)

Not reassessed due to resource not being classified as Key or Significant in the Third Stage Consultation

Overview	
Resource number:	16/11
Resource name:	Mill End Farm
Resource area:	63ha
Resource depth:	Not known
Location	
OS sheet reference:	SO 93 NW
National grid ref:	392835, 237672

Resource description:	
Resource description:	4 th terrace (Cropthorne) sand and gravel. No information on thicknesses available.
Assessment of resource for the second consultation on MLP (Autumn 2013)	
Commentary:	A medium-sized deposit, intersected by a railway line and roads, with small-scale dispersed development across west of the resource area.
Crude estimate of resource:	Depth not known.
Conclusion:	Significant. Consider in defining areas of search.
Assessment of resource for the Third Stage consultation on MLP (Spring 2015)	
Revised estimate of resource:	No change to the assessment.
Conclusion:	Significant.
Assessment of resource for the Fourth Stage consultation on MLP (August 2018)	
This resource area has been split into areas 16/11 and 16/11b.	
Resource area 16/11	
Resource area:	50 ha
Resource depth:	Depth not known.
Revised estimate of resource:	Depth not known.
Resource area 16/11b	
Commentary:	Screened out due to the following appendix A criterion: - Area of Outstanding Natural Beauty

Conclusion:	Significant resource	Conclusion:	Compromised
--------------------	----------------------	--------------------	-------------

Overview	
Resource number:	16/12
Resource name:	Pensham
Resource area:	118ha
Resource depth:	Estimated 2.8m
Location	
OS sheet reference:	SO 94 SW
National grid ref:	394569, 243988
Resource description:	
Resource description:	<p>1st terrace (Bretford) and 2nd terrace (Wasperton) sand and gravel. The 1st terrace to the west (resource area 16/5) was the site of an application by Western Aggregates Ltd dated April 1970 which identified an average thickness of 1.71m and that "the stone content is approximately 50% to 60%, which is very good for this area, and with a silt content reasonably low at between 4% and 7%." The aggregate was seen to be predominantly quartzite with some flints, cherts and rubbly limestone, the sand was mainly quartz grains. The application was refused by the Secretary of State in November 1972.</p> <p>The 2nd and 2st terraces are generally contiguous in this area. Recorded thicknesses for the 2nd Avon terrace vary from 0.5m to 6.1m but 2m-5m is probably the common range. The deposit varies from gravel to sand with some pebbles and is similar to the 4th and 5th terraces in composition.</p> <p>Estimated resource depth based on mean average of: a) application average: 1.71m, b) recorded thicknesses for 2nd terrace: (median average of 0.5m to 6.1m = 3.3m), c) common range for 2nd terrace: (median average of 2m to 5m = 3.5) / 3 = 2.8m</p>
Assessment of resource for the second consultation on MLP (Autumn 2013)	
Commentary:	A medium-sized deposit with some ribbon development across the centre of the resource area.
Crude estimate of resource:	<p>Area: 118ha x average depth: 2.8m / 2</p> <p>Estimated resource volume: 1,652,000 m³</p> <p>Estimated resource tonnage (at 2 t/m³): 3,304,000 tonnes</p>
Conclusion:	Significant – key resource.

Use to define areas of search.			
Assessment of resource for the Third Stage consultation on MLP (Spring 2015)			
Revised estimate of resource:	Area: 118ha x average depth: 2.8m / 2 Estimated resource volume: 1,652,000 m ³ Estimated resource tonnage (at 1.65 t/m³): 2,725,800 tonnes		
Conclusion:	Significant – key resource.		
Assessment of resource for the Fourth Stage consultation on MLP (August 2018)			
This resource area has been split into areas 16/12 and 16/12b.			
Resource area 16/12		Resource area 16/12b	
Resource area:	118 ha	Commentary:	Screened out due to the following appendix A criterion: - Listed Buildings
Resource depth:	Estimated 2.8m		
Revised estimate of resource:	Area: 118 ha x average depth: 2.8m ÷ 2 Estimated resource volume: 1,652,000 m ³ Estimated resource tonnage (at 1.65 t/m³): 2,725,800 tonnes		
Conclusion:	Key resource	Conclusion:	Compromised