

Addendum to Appendix 4: Analysis of aggregate resources in ECA 4: Forest of Feckenham and Feckenham Wetlands

July 2021

Introduction

- 1.1. In the hearing sessions undertaken as part of the examination of the emerging Worcestershire Minerals Local Plan, a change in screening criteria was proposed to no longer screen Source Protection Zone level 2 out of resource areas. In the previous version of the Analysis of Mineral Resources, areas overlapped by SPZ2 were marked as compromised.
- 1.2. To reflect this change, this addendum to *Appendix 4: Analysis of aggregate resources in ECA 4: Forest of Feckenham and Feckenham Wetlands* has been produced to update the information held about resource areas, where these have changed by the change in criteria. However, only resource areas impacted by the change in criteria have been updated, this may mean these resources are visible in incorrect form on maps showing neighbouring resources which have not been changed.
- 1.3. The following resource areas in ECA 4: Forest of Feckenham and Feckenham Wetlands have been impacted by this change:
 - 4/1

Update to resource areas

Resource area 4/1

The following map shows the location of resource area 4/1. It is located near Brockhill and Blackwell. This is a large resource area intersected by roads, with some dispersed development.

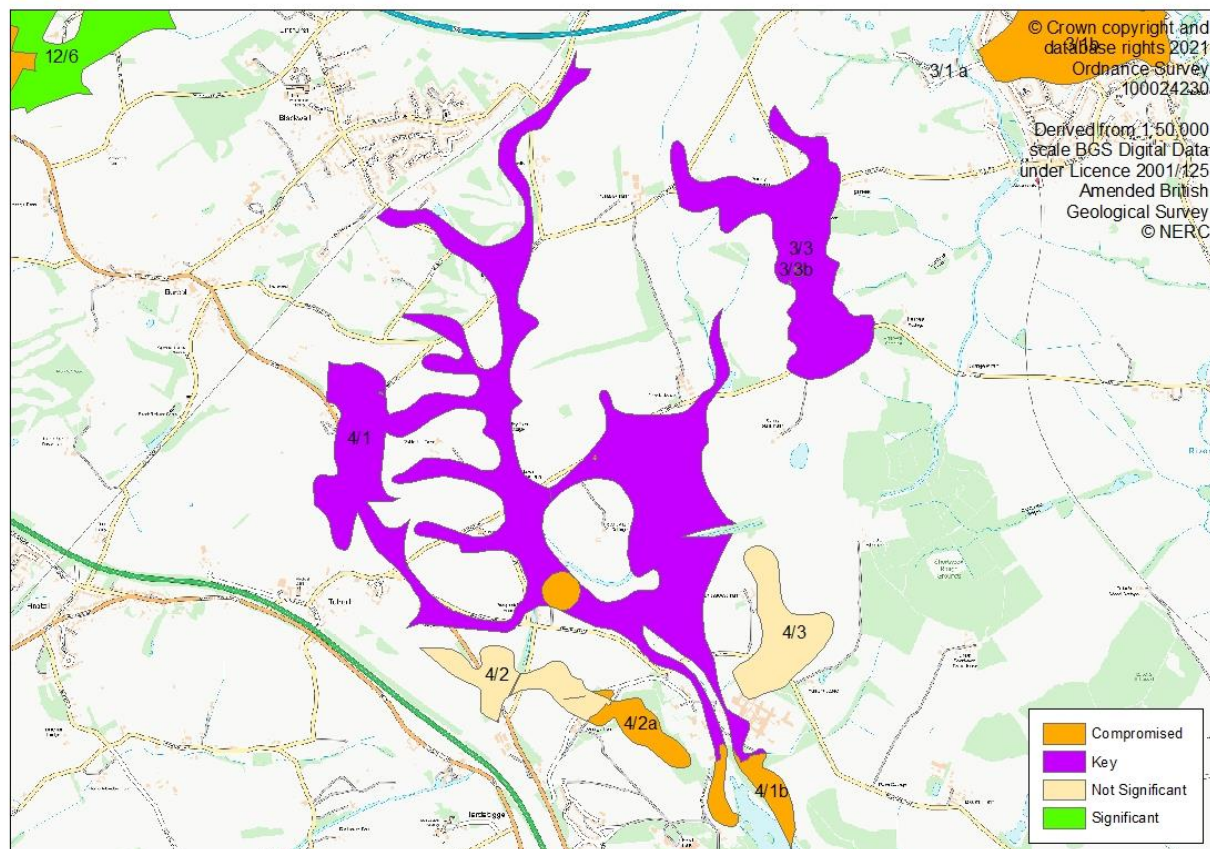


Figure 1. Resource area 4/1.

Resource description

Resource area 4.1 is alluvial fan sand and gravel. This is underlain by solid sand deposits which are assessed as resource area 12/8. The BGS memoir states that a deposit has been worked in a small pit east of Cattespool, now flooded, where 4.6m of coarse gravel with seams of sand were recorded. A borehole at the waterworks recorded 4m of sand and gravel and a well 100m east of this recorded 2.4m of sand and gravel on Wildmoor sandstone.

The area of deposit near HM Prison Hewell (near Brockhill, at the south of the resource area) is described as limited in extent and generally thin.

(Estimated resource depth based on mean average of: a) pit east of Cattespool: 4.6m, b) Borehole at waterworks: 4m and c) well east of borehole: 2.4m = 3.7m)

Previous assessment

This resource area was last assessed as part of the Fourth Stage consultation on MLP (August 2018). At this stage, the resource area was split into areas 4/1 and 4/1b.

Area 4/1b contained parts of the resource screened out and marked as compromised due to the following appendix A criterion:

- Conservation Area
- Listed Building
- Registered Park and Garden
- Source Protection Zone Area

4/1 contained the parts of the resource not impacted by the screening criteria. This resource area was 108ha in area, with an average depth of 3.7m. Therefore, the estimated resource volume was 1,998,000m³, and the estimated tonnage (at 1.65 t/m³) was **3,296,700 tonnes**.

Re-assessment of resource after MLP examination hearing sessions (2021) with SPZ 2 no longer screened out.

Now areas of Source Protection Zone 2 are no longer marked as compromised, resource area 4/1 is now 132ha in area, with an average depth of 3.7m. Therefore, the estimated resource volume is 2,442,000m³, and the estimated tonnage (at 1.65 t/m³) is **4,029,300 tonnes**.