

Addendum to Appendix 1: Analysis of aggregate resources in ECA 1: Teme Valley and Wyre Forest

July 2021

Introduction

- 1.1. In the hearing sessions undertaken as part of the examination of the emerging Worcestershire Minerals Local Plan, a change in screening criteria was proposed to no longer screen Source Protection Zone level 2 out of resource areas. In the previous version of the Analysis of Mineral Resources, areas overlapped by SPZ2 were marked as compromised.
- 1.2. To reflect this change, this addendum to *Appendix 1: Analysis of aggregate resources in ECA 1: Teme Valley and Wyre Forest* has been produced to update the information held about resource areas, where these have changed by the change in criteria. However, only resource areas impacted by the change in criteria have been updated, this may mean these resources are visible in incorrect form on maps showing neighbouring resources which have not been changed.
- 1.3. The following resource areas in ECA 1: Teme Valley and Wyre Forest have been impacted by this change:
 - 1/32

Update to resource areas

Resource area 1/32

The following map shows the location of resource area 1/32. It is located under, and to the south west of Stourport-on-Severn. This is a large resource area intersected by roads, with some dispersed development. The deposit extends under the settlement of Areley Kings (assessed as resource area 1/33).

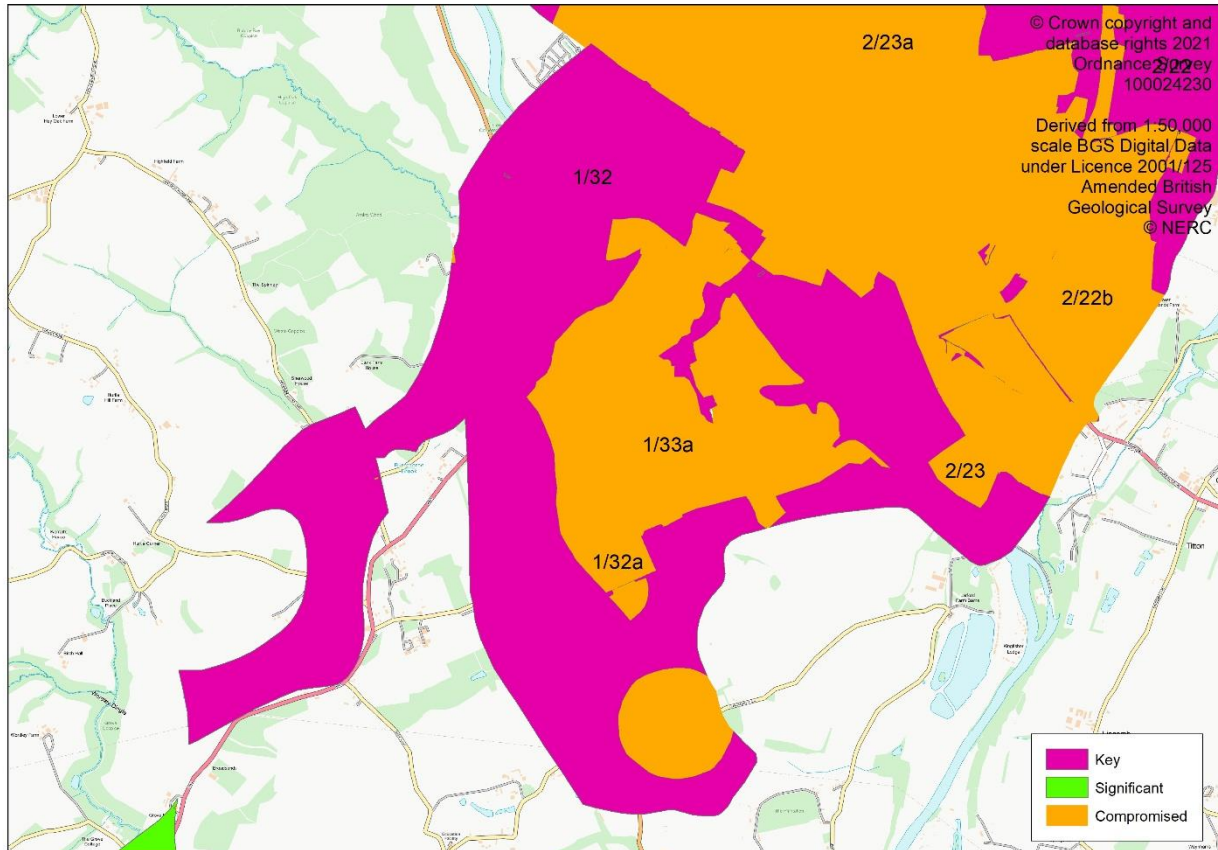


Figure 1. Resource area 1/32.

Resource description

This resource area is mapped as Wildmoor Sandstone Formation.

In this part of the county there are large areas of Wildmoor Formation and Kidderminster Formation solid sand of considerable geological complexity and although the resource area is mapped as Wildmoor Formation there may be some overlap with the Kidderminster Formation.

The Kidderminster and Wildmoor sandstones are partially by terrace and glacial sand and gravel deposits (assessed as resource areas 1/3 and 1/28).

Wildmoor Formation

The Wildmoor Formation is generally described as red-brown and orange, fine to medium grained, feldspathic sandstone with sparse, thin mudstone beds. Generally the formation is

characterised by an absence of pebbles, in contrast to the Kidderminster Formation, although sparse pebbly stringers are recorded. The fine grain-size and soft, poorly cemented, nature of the sandstone in some areas made it ideal for exploitation as moulding sand for use in the foundry industry.

The memoir states that the Wildmoor Sandstone Formation ranges in thickness from 90m-120m. There is some information about some sections of the deposit in this area:

- Near Dunley: The outcrop of Wildmoor formation (Upper Mottled Sandstone) is capped to the west by an outlier of Bromsgrove sandstone faulted on its west side against the sandstone.
- To the south of the Gladder Brook there are exposures around Areley Kings and southwards to Longmore Hill Farm, Astley where the deposits are recorded as 454' (138.4m) thick.

(Estimated resource depth calculated as a mean average of: a) memoir range (median average of 90m to 120m = 105m), b) south of the Gladder Brook: 138.4m = 121.7m)

Previous assessment

This resource area was last assessed as part of the Fourth Stage consultation on MLP (August 2018). At this stage, the resource area was split into areas 1/32 and 1/32a.

Area 1/32a contained parts of the resource screened out and marked as compromised due to the following appendix A criterion:

- Allocated site in Wyre Forest Core Strategy
- Conservation Area
- Listed Buildings
- Settlement Boundary
- Source Protection Zone 1 & 2

Area 1/32 contained the parts of the resource not impacted by the screening criteria. This resource area was 384ha in area, with an average depth of 121.7m. Therefore, the estimated resource volume was 233,664,000m³, and the estimated tonnage (at 1.65 t/m³) was **385,545,600 tonnes**¹.

Re-assessment of resource after MLP examination hearing sessions (2021) with SPZ 2 no longer screened out.

Now areas of Source Protection Zone 2 are no longer marked as compromised, resource area 1/32 is now 424ha in area, with an average depth of 121.7m. Therefore, the estimated resource volume is 258,004,000m³, and the estimated tonnage (at 1.65 t/m³) is **425,706,600 tonnes**.

¹ Due to a calculation error, this figure was previously incorrectly reported.