

Addendum to the Fourth Stage Consultation on the Minerals Local Plan

November 2018

**This addendum should be read alongside the
Fourth Stage Consultation on the Minerals Local Plan**

1. Technical error relating to screening out Scheduled Monuments

- 1.1. In November 2018, following the finalisation and printing of the Fourth Stage Consultation document for the emerging Worcestershire Minerals Local Plan, officers identified that a technical error had occurred when applying the screening methodology which is set out in Worcestershire County Council's background document *Location of development: screening and site selection methodology* (August 2018) (hereafter referred to as "the methodology"), available at www.worcestershire.gov.uk/mineralsbackground.
- 1.2. The methodology sets out that where a mineral resource¹ overlaps any of the screening criteria in Appendix A of the methodology, the resource area should have been split into the parcel(s) which do overlap the screening criterion and the parcel(s) which do not overlap. The overlapping parcels should have been re-classified in the updated *Analysis of Mineral Resources (August 2018)* as "compromised", and not taken further forward when determining land for allocation as Areas of Search, in defining the Strategic Corridors, or in identifying Mineral Safeguarding Areas (and associated Mineral Consultation Areas). The remaining uncompromised parcels should then have been re-assessed to determine whether they should have been classified in the *Analysis of Mineral Resources (August 2018)* as "key", "significant" or "not significant" resources against the established size and tonnage thresholds.
- 1.3. When applying the screening criteria from Appendix A of the methodology, to identify land with national or international designations which should be afforded the highest level of protection, a software error meant that the overlap between Scheduled Monuments and terrace and glacial sand and gravel deposits was not identified.
- 1.4. This error did not affect any other type of mineral deposit and therefore Scheduled Monuments were correctly identified (and overlapping land recorded as compromised) for solid sands, silica sand, brick clay and building stone deposits.

¹ A key or significant resource area as identified in Worcestershire County Council ([August 2016](#)) *Analysis of Mineral Resources in Worcestershire*.

What are the implications?

- 1.5. As the parcels of land containing terrace and glacial sand and gravel deposits which overlapped with Scheduled Monuments were not identified, this means that they were not re-classified as "compromised" and therefore the size and tonnage estimates for the remaining resource areas were not recalculated to confirm their significance classification against the established thresholds.
- 1.6. To rectify this, the *Analysis of Mineral Resources* has been amended in a version dated November 2018. This is available at www.worcestershire.gov.uk/mineralsbackground. This fully replaces the August 2018 version and, therefore, all references to the *Analysis of Mineral Resources* (August 2018) within the Fourth Stage Consultation should be taken to read as November 2018.
- 1.7. Table 1 below provides details of the terrace and glacial sand and gravel resource areas which have now been identified as overlapping with Scheduled Monuments and whether this has resulted in any change to the significance classification of each deposit.
- 1.8. Further information is set out below about how this affects specific parts of the Minerals Local Plan.

Table 1. Terrace and glacial sand and gravel resource areas which overlap with Scheduled Monuments

Terrace and glacial sand and gravel resource areas which overlap with Scheduled Monuments (resource area reference number)	Were these resources classified as key or significant in the AUGUST 2018 Analysis of Mineral Resources?	Does reclassifying the overlapping area mean that the significance of the remaining resource area has changed in the NOVEMBER 2018 Analysis of Mineral Resources?
1/20	Significant resource	1/20 – the amended resource area remains as a Significant resource 1/20b extended to cover newly compromised area
4/5	Key resource	4/5 – the amended resource area remains as a Key resource 4/5c – new reference for compromised area
7/14	Key resource	7/14 – the amended resource area remains as a Key resource 7/14c – new reference for compromised area
7/17	Significant	7/17 – the amended resource area remains as a Significant resource 7/17c – new reference for compromised area

Terrace and glacial sand and gravel resource areas which overlap with Scheduled Monuments (resource area reference number)	Were these resources classified as key or significant in the AUGUST 2018 Analysis of Mineral Resources?	Does reclassifying the overlapping area mean that the significance of the remaining resource area has changed in the NOVEMBER 2018 Analysis of Mineral Resources?
9/2	Key resource	9/2 – the amended resource area remains as a Key resource 9/2b extended to cover newly compromised area
11/3	Significant resource	11/3– the amended resource area remains as a Significant resource 11/3c – new reference for compromised area
14/2	Significant resource	14/2 – the amended resource area remains as a Significant resource 14/2c – new reference for compromised area
16/1	Key resource	16/1 – the amended resource area remains as a Key resource 16/1c – new reference for compromised area
16/2	Key resource	16/2– the amended resource area remains as a Key resource 16/2c – new reference for compromised area
16/4	Key resource	16/4– the amended resource area remains as a Key resource 16/4c – new reference for compromised area
18/4	Key resource	18/4– the amended resource area remains as a Key resource 18/4c – new reference for compromised area
22/4	Key resource	22/4 – the amended resource area remains as a Key resource 22/4c – new reference for compromised area

1.9. The interactive minerals mapping tool (available at www.worcestershire.gov.uk/minerals), which incorporates the proposed Policies Map, shows the amended resource areas.

Portrait of Worcestershire

- 1.10. As a consequence of the amendments outlined above, Paragraph 2.26 of the Fourth Stage Consultation document and its associated footnotes should be taken to read as set out below, with deleted text indicated by being highlighted in yellow and struck through and inserted text indicated by bold underlined red text:

"~~51.1%~~ **50.8%** of Worcestershire's sand and gravel deposits⁴⁹ are not affected by significant viability, environmental or amenity constraints (60.2% of Worcestershire's solid sand deposits⁵⁰ and ~~45.9%~~ **45.4%** of Worcestershire's terrace and glacial sand and gravel deposits⁵¹)."

Footnote 49: "By area (~~14,326~~ **14,230** hectares of 28,015 hectares). Worcestershire County Council (~~August~~ **November** 2018) *Analysis of Mineral Resources* was refreshed following the Third Stage Consultation on the Minerals Local Plan to take account of environmental and amenity screening criteria. For further information see Worcestershire County Council's background document *Location of development: screening and site selection methodology* (August 2018), available at www.worcestershire.gov.uk/mineralsbackground."

Footnote 50 "By area (6,170 hectares of 10,245 hectares). Worcestershire County Council (~~August~~ **November** 2018) *Analysis of Mineral Resources* was refreshed following the Third Stage Consultation on the Minerals Local Plan to take account of environmental and amenity screening criteria. For further information see Worcestershire County Council's background document *Location of development: screening and site selection methodology* (August 2018), available at www.worcestershire.gov.uk/mineralsbackground."

Footnote 51 "By area (~~8,156~~ **8,060** hectares of 17,770 hectares). Worcestershire County Council (~~August~~ **November** 2018) *Analysis of Mineral Resources* was refreshed following the Third Stage Consultation on the Minerals Local Plan to take account of environmental and amenity screening criteria. For further information see Worcestershire County Council's background document *Location of development: screening and site selection methodology* (August 2018), available at www.worcestershire.gov.uk/mineralsbackground."

- 1.11. An amended version of Figure 2.2 is included in Appendix 1. The interactive minerals mapping tool (available at www.worcestershire.gov.uk/minerals), which incorporates the proposed Policies Map, shows the amended resource area classification.

Strategic corridors – boundaries

- 1.12. Any changes to the significance classification or shape of the resource areas could have had an impact on defining the Strategic Corridor boundaries for the Fourth Stage Consultation, depending on whether any change(s) were significant enough to alter significant clusters of resources.
- 1.13. None of the resource areas have been reclassified as no longer being significant, as shown above. The changes to the precise shape of the resource areas by removing the area which overlaps Scheduled Monuments have been considered, and these are deemed not to require any of the Strategic Corridor boundaries to be amended.

Strategic corridors – amount of resource

1.14. Chapter 4 (and Appendix 2) of the Fourth Stage Consultation document highlight the proportions of each type of mineral resource within each of the strategic corridors. As a consequence of the amendments outlined above, all references to these figures within the Fourth Stage Consultation should be taken to read as shown in Table 2 below:

Table 2. Original and amended figures for the proportion of terrace and glacial sand and gravel resources in each strategic corridor

Strategic corridor	% of the total key and significant terrace and glacial sand and gravel resources in Worcestershire	% of the total key and significant terrace and glacial sand and gravel resources in Worcestershire
	Figure stated in the Fourth Stage Consultation Document	Amended figure
Avon and Carrant Brook	34.2%	33.1%
Lower Severn	19.5%	18.0%
North East Worcestershire	5.3%	4.3%
North West Worcestershire	NO CHANGE (3.5%)	NO CHANGE (3.5%)
Salwarpe Tributaries	NO CHANGE (0.9%)	NO CHANGE (0.9%)
TOTAL within all strategic corridors	63.4%	59.9%

1.15. Paragraph 4.56 of the Fourth Stage Consultation document relates to the Avon and Carrant Brook Strategic Corridor and paragraph 4.84 relates to the Lower Severn Strategic Corridor, giving the average depths for the terrace and glacial sand and gravel deposits in the corridors.

1.16. These should be taken to read as set out below, with deleted text indicated by being highlighted in yellow and struck through and inserted text indicated by bold underlined red text:

"4.56 Working in this corridor is most likely to be for relatively shallow sand and gravel workings, with river terrace sand and gravel deposits in the corridor averaging ~~3.4~~ **2.8** metres in depth..."

"4.84 Working in this corridor is therefore most likely to be for relatively shallow sand and gravel workings, with river terrace sand and gravel deposits in the corridor averaging ~~3.4~~ **3.6** metres in depth..."

Areas of search

1.17. As set out in **the methodology**, key and significant resources within strategic corridors were proposed for allocation as areas of search in the Fourth Stage Consultation document. This means that there were some areas of search proposed for allocation which contain Scheduled Monuments, which should not have been the case.

- 1.18. However, of the resource areas which overlapped with Scheduled Monuments, only those shown in Table 3 were within strategic corridors and therefore proposed as areas of search:

Table 3. Areas of search in the Fourth Stage Consultation which overlap with Scheduled Monuments

Resource area reference	Area of search reference
16/1	TGSG36 (within the Avon and Carrant Brook Strategic Corridor)
16/2	TGSG39 (within the Avon and Carrant Brook Strategic Corridor)
16/4	TGSG43 (within the Avon and Carrant Brook Strategic Corridor)
18/4	TGSG53 (within the Avon and Carrant Brook Strategic Corridor)
7/17	TGSG64 (within the Lower Severn Strategic Corridor)

- 1.19. Images of each of these areas of search are included in Appendix 2 to illustrate the consequential amendments to the shapes of the areas of search once Scheduled Monuments have been removed, and amended versions of Figure 4.1, 4.2 and 4.3 are included in Appendices 3-5.
- 1.20. The interactive minerals mapping tool (available at www.worcestershire.gov.uk/minerals), which incorporates the proposed Policies Map, shows the amended areas of search.

Mineral Safeguarding Areas and Mineral Consultation Areas

- 1.21. For terrace and glacial sand and gravel, Mineral Safeguarding Areas and their associated Mineral Consultation Areas were based on the resources which were identified as being key or significant. Any changes to the significance classification or shape of resource areas therefore directly impacts these.
- 1.22. None of the resource areas have been reclassified as no longer being significant, as outlined in Table 1 above, but the changes to the precise shape of the key and significant resource areas mean that the Mineral Safeguarding Areas and Mineral Consultation Areas have been updated to reflect this.
- 1.23. Appendix 6 (Amended Figure 7.1. Mineral Safeguarding Areas and Mineral Consultation Areas) has been included for completeness, although the amendments may be too small to be discernible at this scale. The interactive minerals mapping tool (available at www.worcestershire.gov.uk/minerals), which incorporates the proposed Policies Map, shows the amended Mineral Safeguarding Areas and Mineral Consultation Areas.

2. Administrative error relating to the significance of one crushed rock resource area

- 2.1. One crushed rock deposit, resource area 9/14 which contains limestone, was wrongly categorised as being not significant in the *Analysis of Mineral Resources (August 2018)*. This has been rectified in the amended version dated November 2018. This is available at www.worcestershire.gov.uk/mineralsbackground. As noted above, this fully replaces the August 2018 version and, therefore, all references to the *Analysis of Mineral Resources (August 2018)* within the Fourth Stage Consultation should be taken to read as November 2018.
- 2.2. Resource area 9/14 is shown in Appendix 7 for reference, and the interactive minerals mapping tool (available at www.worcestershire.gov.uk/minerals) shows the amended resource area classification.

Portrait of Worcestershire

- 2.3. As a consequence of this amendment, Paragraph 2.38 of the Fourth Stage Consultation document and its associated footnotes should be taken to read as set out below, with deleted text indicated by being highlighted in yellow and struck through and inserted text indicated by bold underlined red text:

"Only ~~3.0%~~ **3.9%** of Worcestershire's crushed rock deposits are not affected by significant viability, environmental or amenity constraints,⁷⁰..."

Footnote 70: "By area ~~53~~ **61** hectares of 1,706 hectares). Worcestershire County Council (~~August~~ **November** 2018) Analysis of Mineral Resources was refreshed following the Third Stage Consultation on the Minerals Local Plan to take account of environmental and amenity screening criteria. For further information see Worcestershire County Council's background document *Location of development: screening and site selection methodology* (August 2018), available at www.worcestershire.gov.uk/mineralsbackground."

- 2.4. An amended version of Figure 2.4 is included in Appendix 8. The interactive minerals mapping tool (available at www.worcestershire.gov.uk/minerals), which incorporates the proposed Policies Map, shows the amended resource area classification.

Strategic corridors and areas of search

- 2.5. Any changes to the significance classification of resource areas could have had an impact on defining the Strategic Corridor boundaries for the Fourth Stage Consultation, depending on whether any change(s) were significant enough to alter significant clusters of resources. This change of classification has been considered, and it is not deemed to require any changes to the strategic corridor boundaries or to be sufficient to lead to the identification of an additional strategic corridor.
- 2.6. As set out in the methodology, key and significant resources within strategic corridors were proposed for allocation as areas of search in the Fourth Stage Consultation document. As the resource area is not within a strategic corridor, it does not meet the requirements for being identified as an area of search.

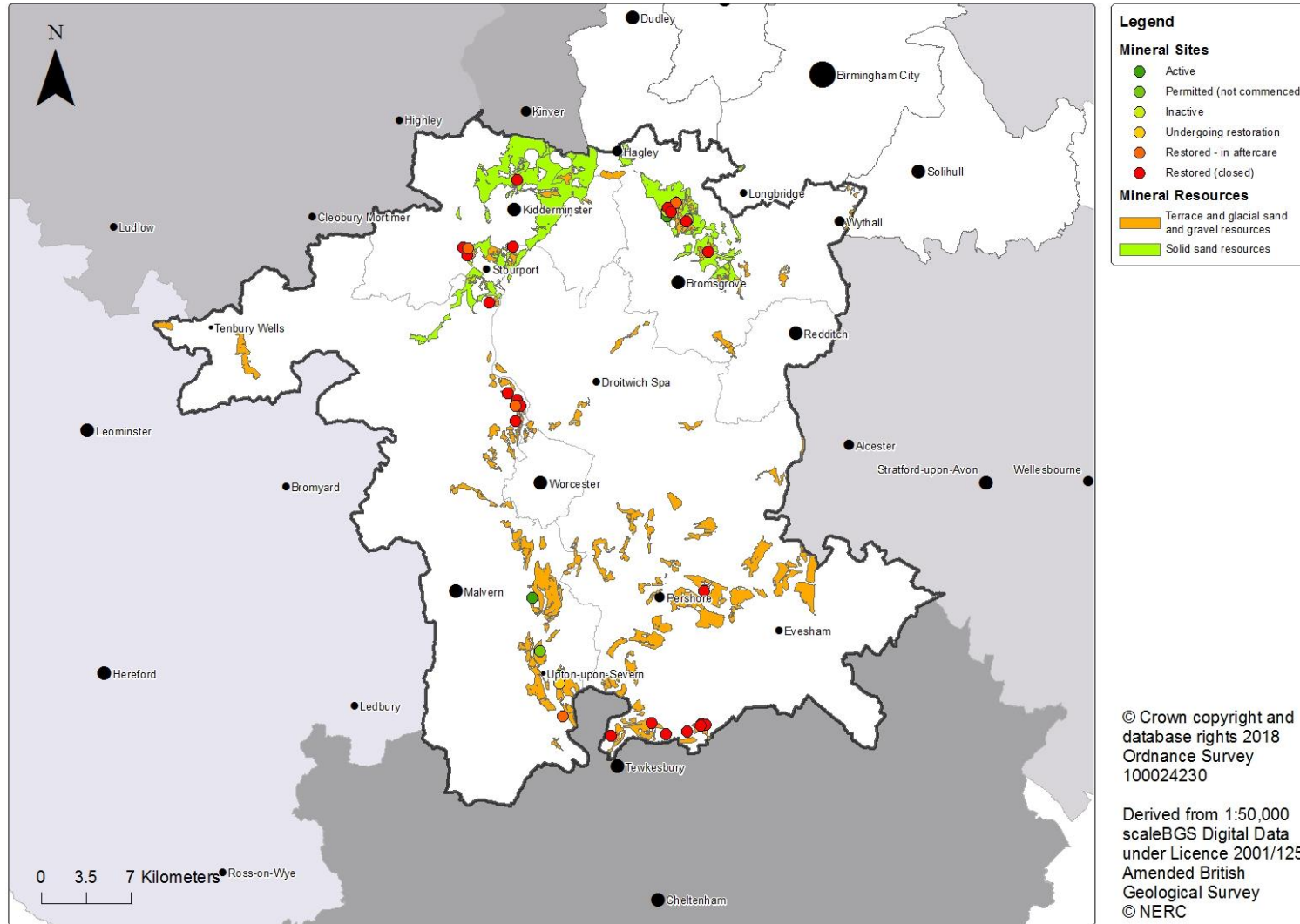
Mineral Safeguarding Areas and Mineral Consultation Areas

- 2.7. For crushed rock, Mineral Safeguarding Areas and their associated Mineral Consultation Areas were based on the resources which were identified as being key or significant. Therefore this change to the significance classification of a resource area directly impacts these, and resource area 9/14 should have been safeguarded. The Mineral Safeguarding Areas and Mineral Consultation Areas have been updated to reflect this. Appendix 6 (Amended Figure 7.1. Mineral Safeguarding Areas and Mineral Consultation Areas) has been included for completeness, although the amendments may be too small to be discernible at this scale. The interactive minerals mapping tool (available at www.worcestershire.gov.uk/minerals), which incorporates the proposed Policies Map, shows the amended Mineral Safeguarding Areas and Mineral Consultation Areas.

3. Statutory assessments

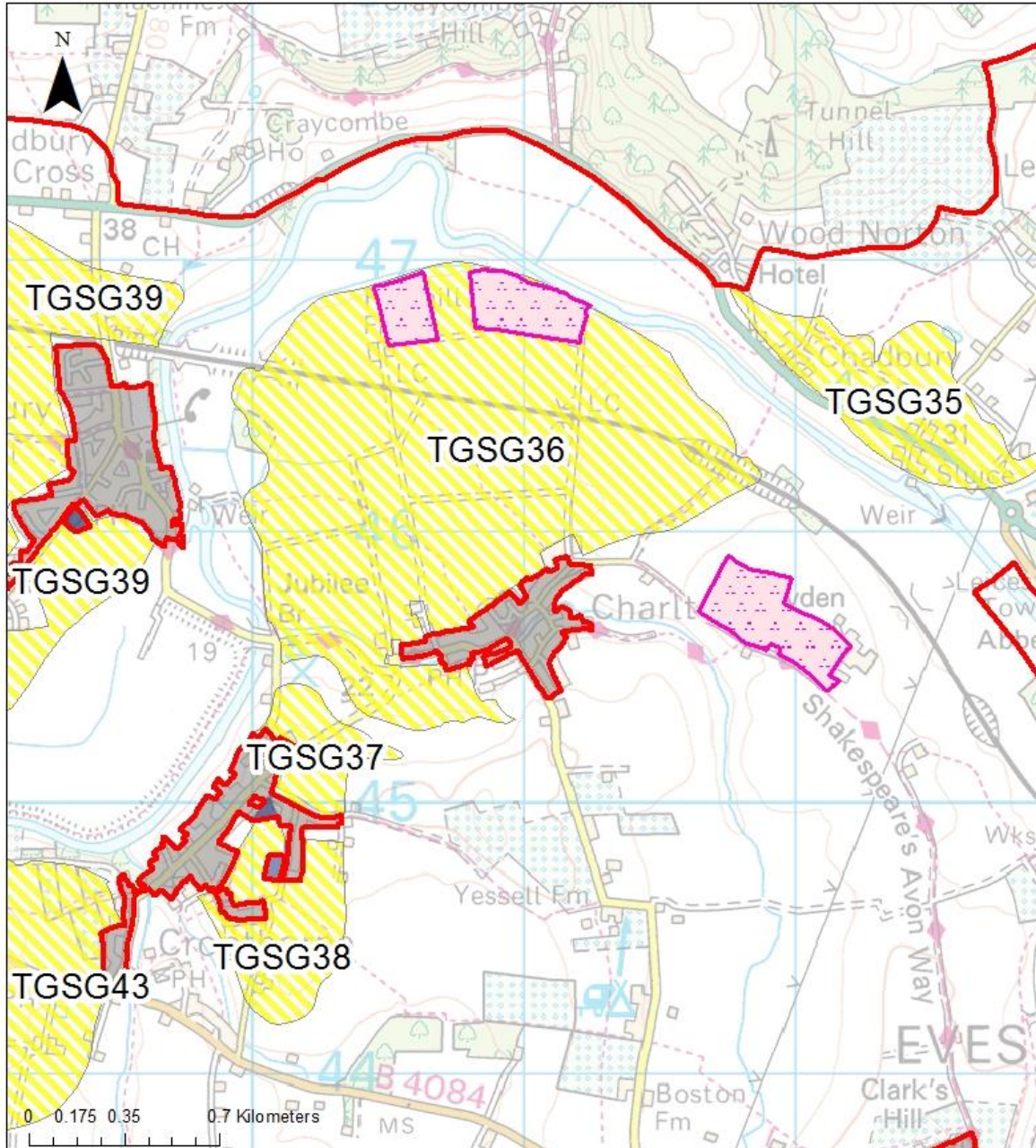
- 3.1. The issues set out in this Addendum have the potential to influence the conclusions of the statutory assessments of the Fourth Stage Consultation. As far as possible, the issues have been considered by the officers or consultants who prepared the assessments to establish whether there are any implications for their conclusions, as outlined below:
- There are no implications for the conclusions of the "*Equality Impact Assessment Relevance Screening*" of the [Fourth Stage Consultation on the Minerals Local Plan](#) from the Addendum to the Fourth Stage Consultation.
 - There are no implications for the conclusions of the "*Habitats Regulations Assessment Record of Assessment*" of the [Fourth Stage Consultation on the Minerals Local Plan](#) from the Addendum to the Fourth Stage Consultation.
 - The "*Sustainability Appraisal*" of the [Fourth Stage Consultation on the Minerals Local Plan](#) takes account of the issues outlined in this Addendum in reaching its conclusions and recommendations.
 - The "*Review and update of the Surface and Ground Water Protection Issues, including a Flood Risk Assessment of the Areas of Search*" does not take account of the issues outlined in this Addendum. There may be implications for the flood risk assessment ratings for the five affected areas of search by virtue of the changed shape of those areas. Officers have reviewed the flood zone information and consider that the impact is likely to be minimal. However, the changes to the areas of search could also alter other issues referred to in the Flood Risk Assessment, such as the number of flood risk receptors, or the number or status of watercourses or source protection zones which fall within an area of search. It is anticipated that the implications for the conclusions of the Flood Risk Assessment are likely to be minimal, but they will be fully taken into account in the next iteration of the Strategic Flood Risk Assessment.

Appendix 1: Amended Figure 2.2. Sand and gravel resources



Appendix 2: Amendments to areas of search

Area of search TGSG36 and Scheduled Monuments



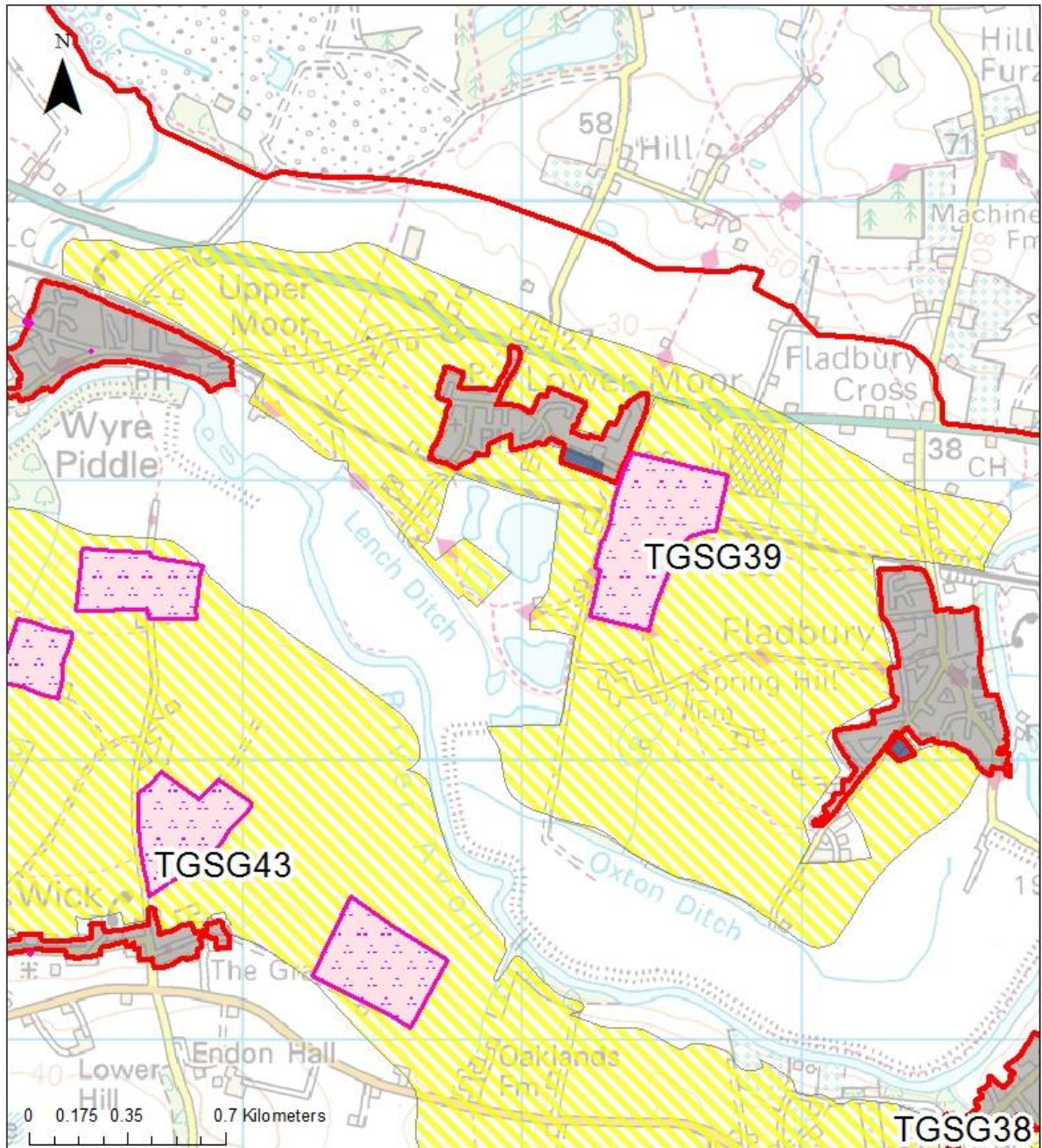
Legend	
Strategic corridors	Areas of search
Avon and Carrant Brook Strategic Corridor	Terrace and glacial sand and gravel
Settlements	Scheduled Monument
City, Borough and District site allocations	Scheduled Monument

© Crown copyright and
database rights 2018
Ordnance Survey
100024230

Derived from 1:50,000 scale
BGS Digital Data under
Licence 2001/125. Amended
British Geological Survey
© NERC

NOTE: The strategic corridors and areas of search can be viewed in more detail on the Policies Map (part of the interactive minerals mapping tool).

Area of search TGSG39 and Scheduled Monuments



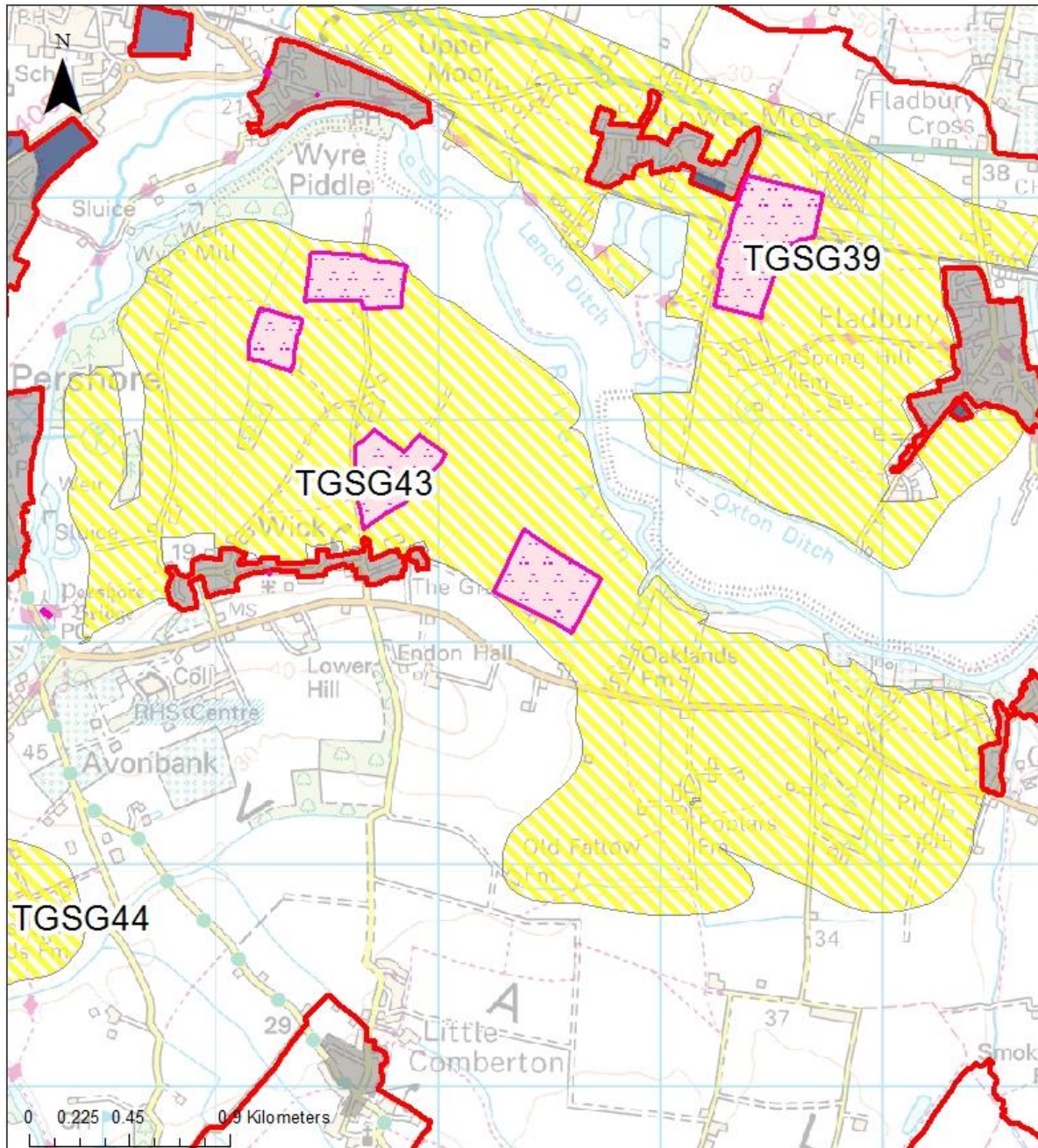
Legend	
Strategic corridors	Areas of search
 Avon and Carrant Brook Strategic Corridor	 Terrace and glacial sand and gravel
 Settlements	Scheduled Monument
 City, Borough and District site allocations	 Scheduled Monument

© Crown copyright and
 database rights 2018
 Ordnance Survey
 100024230

Derived from 1:50,000 scale
 BGS Digital Data under
 Licence 2001/125. Amended
 British Geological Survey
 © NERC

NOTE: The strategic corridors and areas of search can be viewed in more detail on the Policies Map (part of the interactive minerals mapping tool).

Area of search TGSG43 and Scheduled Monuments



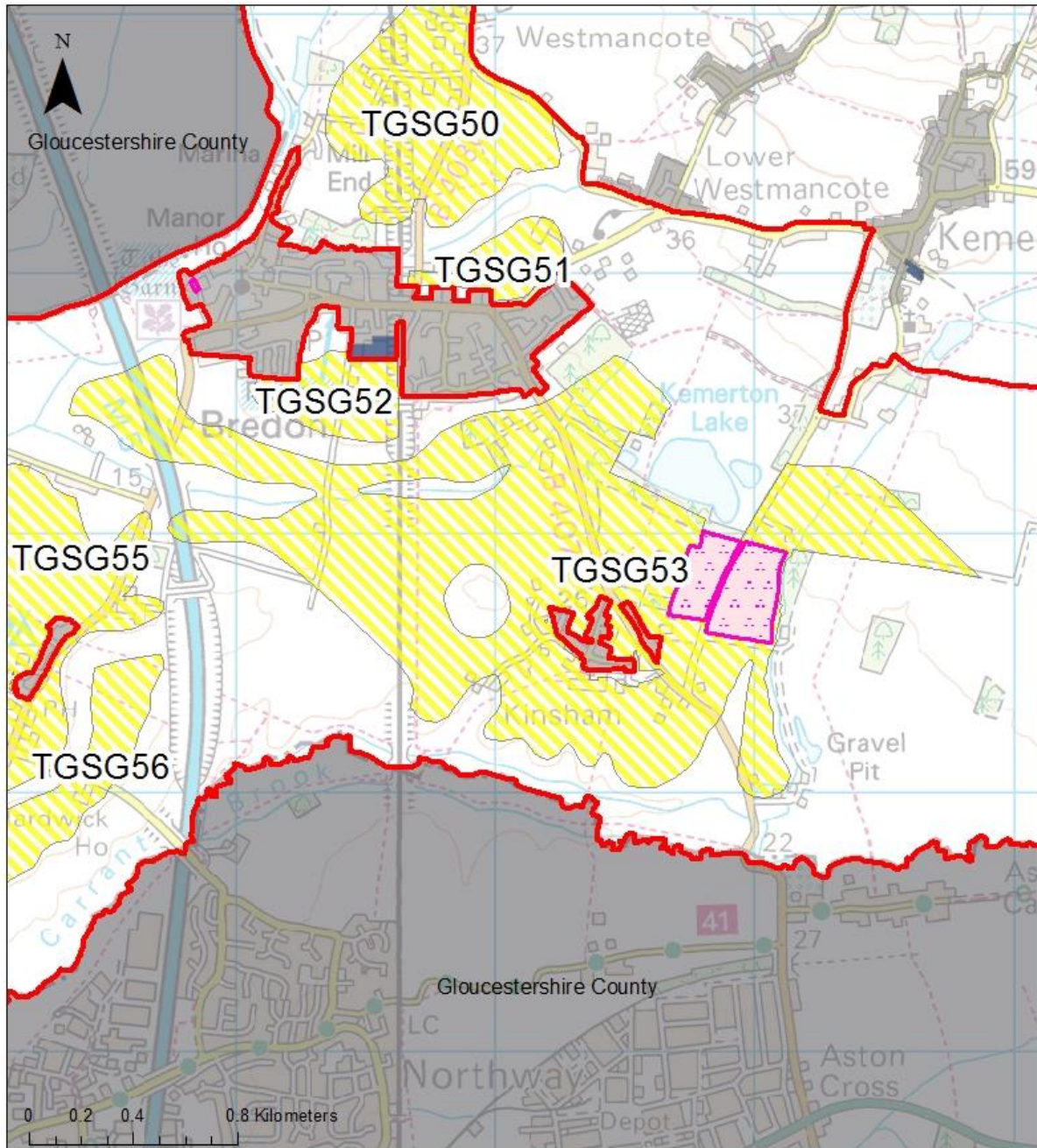
Legend	
Strategic corridors	Areas of search
 Avon and Carrant Brook Strategic Corridor	 Terrace and glacial sand and gravel
 Settlements	Scheduled Monument
 City, Borough and District site allocations	 Scheduled Monument

© Crown copyright and database rights 2018
Ordnance Survey
100024230

Derived from 1:50,000 scale
BGS Digital Data under
Licence 2001/125. Amended
British Geological Survey
© NERC

NOTE: The strategic corridors and areas of search can be viewed in more detail on the Policies Map (part of the interactive minerals mapping tool).

Area of search TGSG53 and Scheduled Monuments



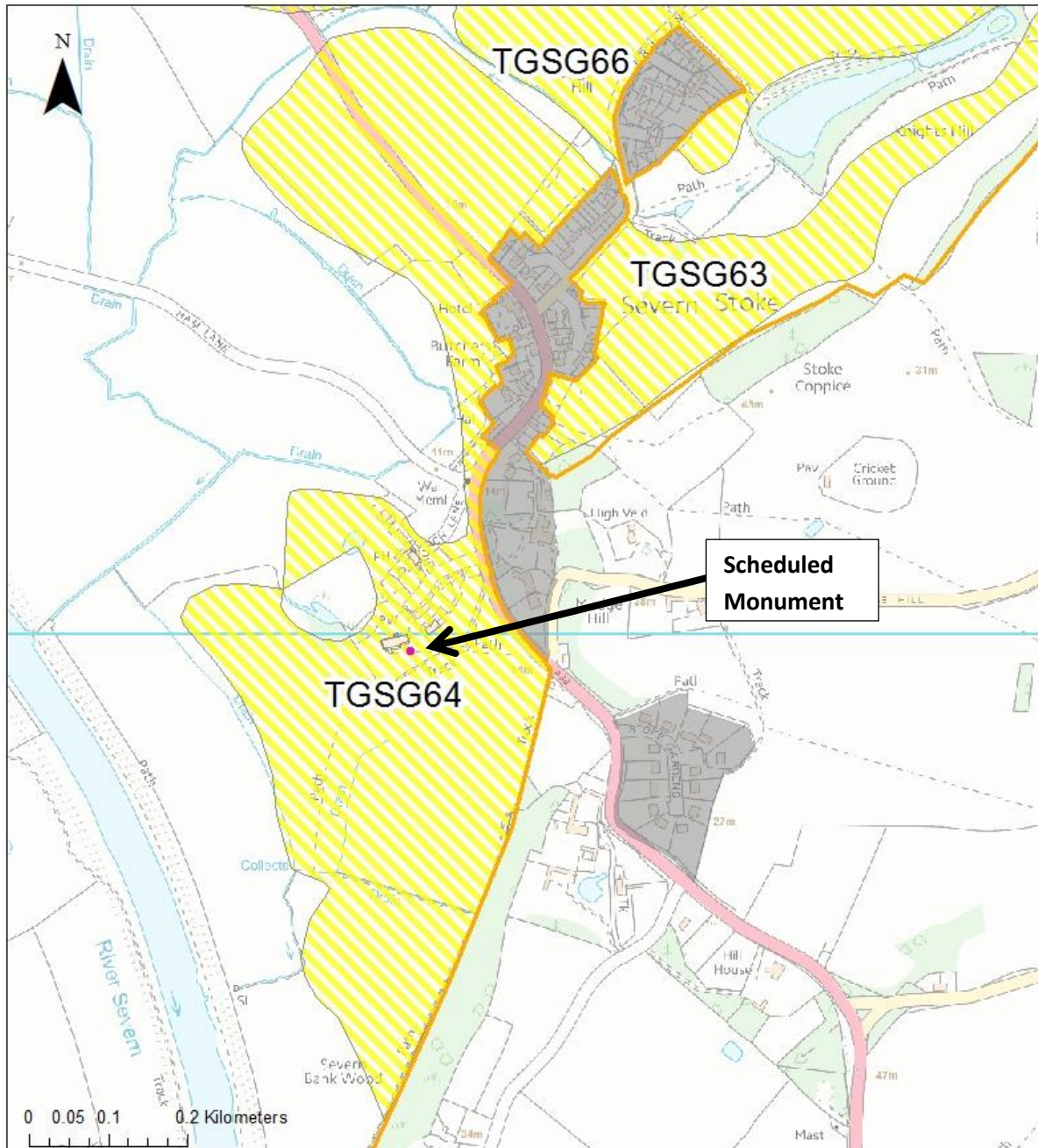
Legend	
Strategic corridors	Areas of search
Avon and Carrant Brook Strategic Corridor	Terrace and glacial sand and gravel
Settlements	Scheduled Monument
City, Borough and District site allocations	Scheduled Monument

© Crown copyright and database rights 2018
 Ordnance Survey
 100024230

Derived from 1:50,000 scale
 BGS Digital Data under
 Licence 2001/125. Amended
 British Geological Survey
 © NERC

NOTE: The strategic corridors and areas of search can be viewed in more detail on the Policies Map (part of the interactive minerals mapping tool).

Area of search TGSG64 and Scheduled Monuments



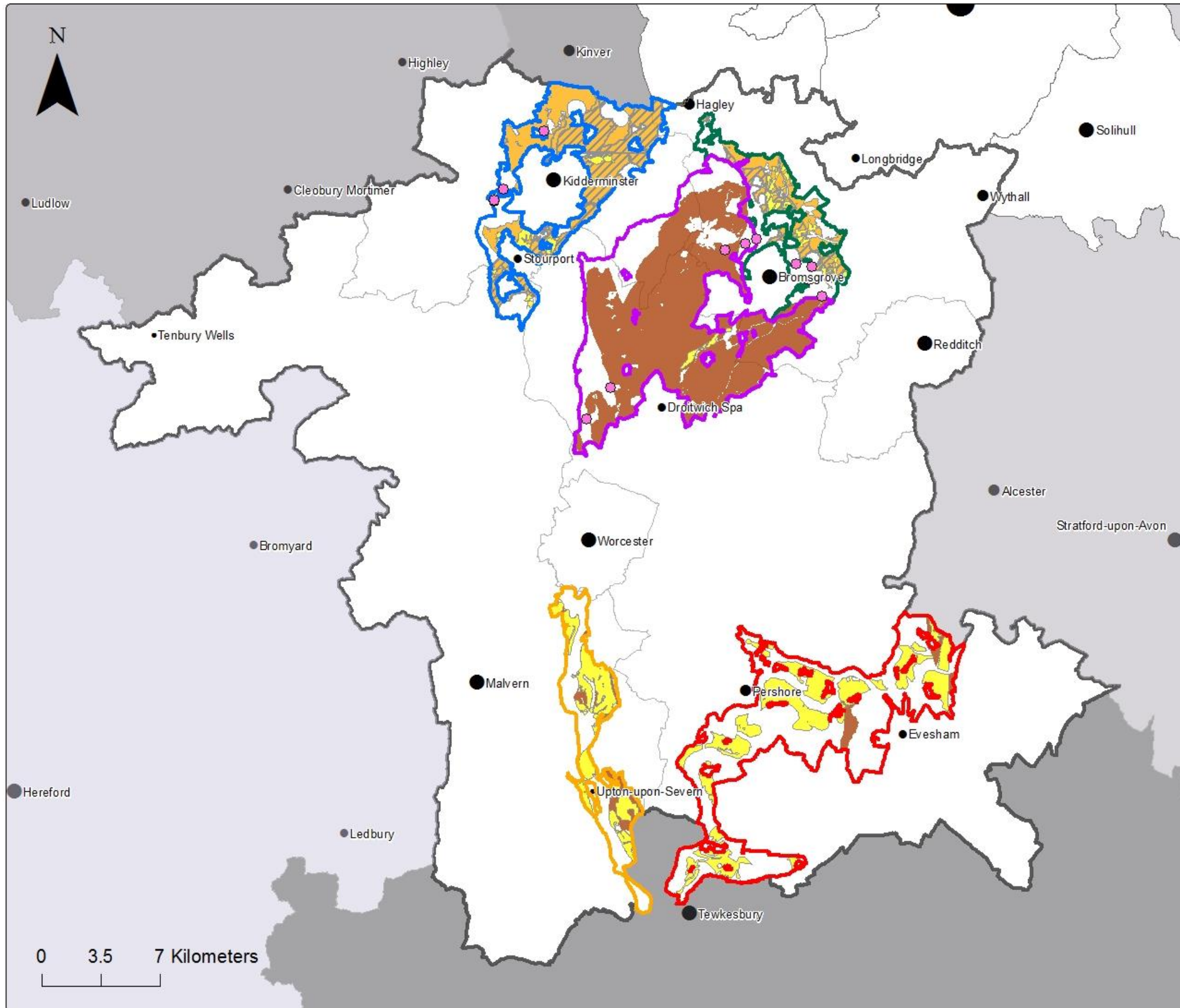
Legend	
Strategic corridors	Areas of search
Lower Severn Strategic Corridor	Terrace and glacial sand and gravel
Settlements	Scheduled Monument
City, Borough and District site allocations	Scheduled Monument

© Crown copyright and database rights 2018
Ordnance Survey
100024230

Derived from 1:50,000 scale
BGS Digital Data under
Licence 2001/125. Amended
British Geological Survey
© NERC

NOTE: The strategic corridors and areas of search can be viewed in more detail on the Policies Map (part of the interactive minerals mapping tool).

Appendix 3: Amended Figure 4.1. Key diagram



Legend

Strategic corridors

-  Avon and Carrant Brook Strategic Corridor
-  Lower Severn Strategic Corridor
-  North East Worcestershire Strategic Corridor
-  North West Worcestershire Strategic Corridor
-  Salwarpe Tributaries Strategic Corridor

Areas of search

-  Terrace and glacial sand and gravel
-  Silica sand
-  Solid sand sand and gravel
-  Brick clay
-  Building stone

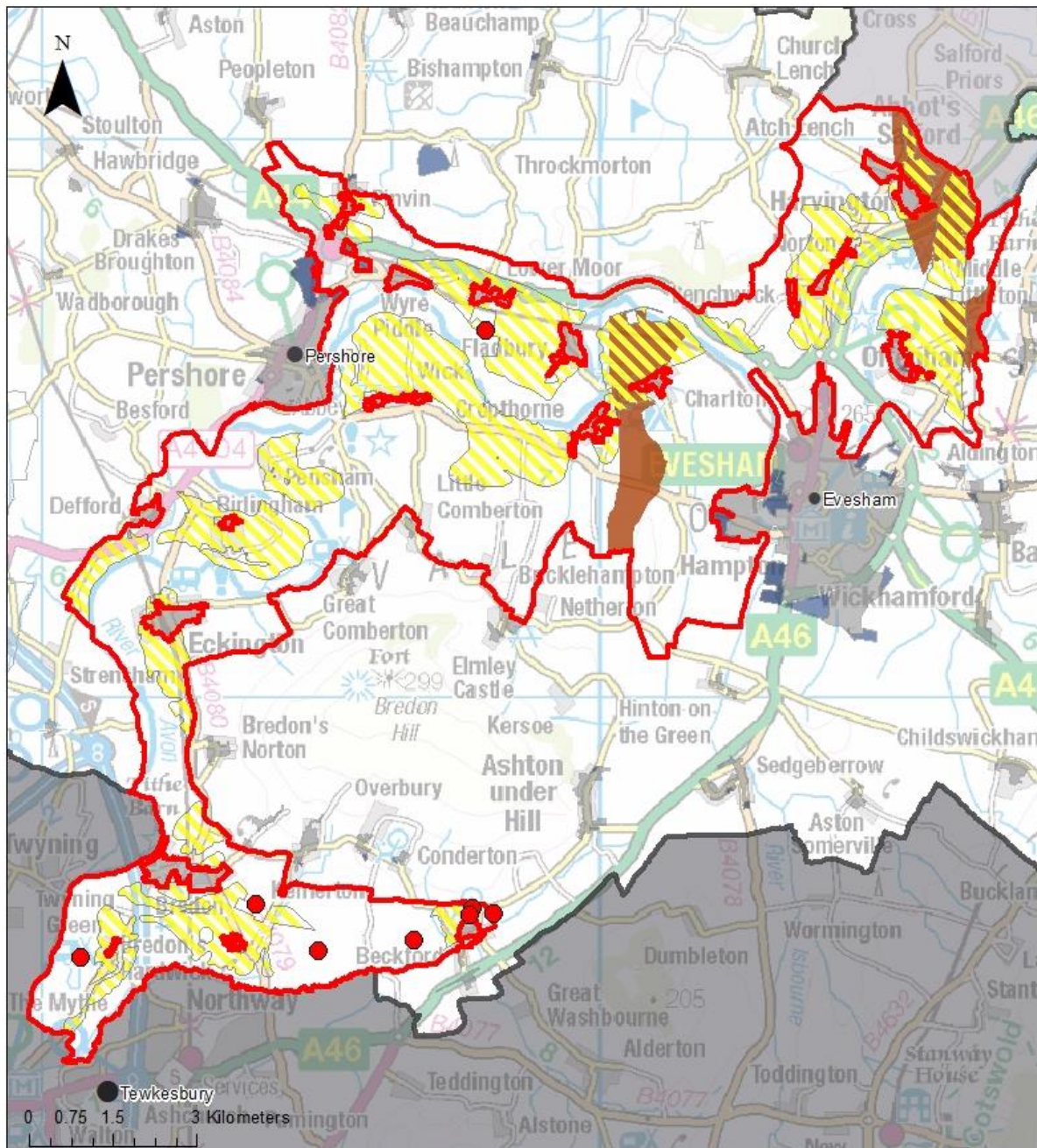
NOTE: Not all resources are visible on this diagram. In some areas, surface resources overlie bedrock resources. This affects how areas of search for terrace and glacial sand and gravel, solid sand sand and gravel, silica sand or brick clay are displayed. The areas of search can be viewed in more detail on the Policies Map (part of the interactive minerals mapping tool).

© Crown copyright and database rights 2018
Ordnance Survey
100024230

Derived from 1:50,000 scale
BGS Digital Data under
Licence 2001/125. Amended
British Geological Survey
© NERC

Former building stone quarry
data provided by Herefordshire
and Worcestershire Earth
Heritage Trust.

Appendix 4: Amended Figure 4.2. Avon and Carrant Brook Strategic Corridor



Legend	
Strategic corridors	Settlements
Avon and Carrant Brook Strategic Corridor	City, Borough and District site allocations
Areas of search	Mineral Sites
Terrace and glacial sand and gravel	Status
Brick clay	Restored (closed)

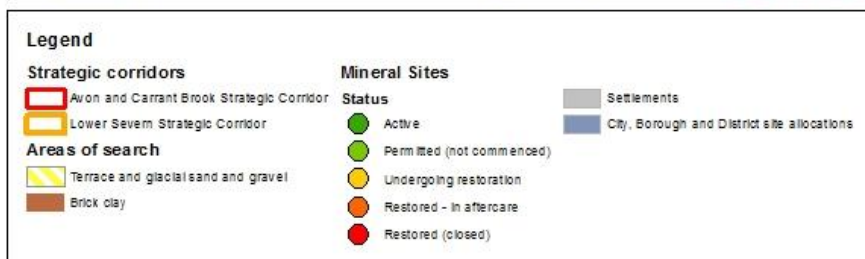
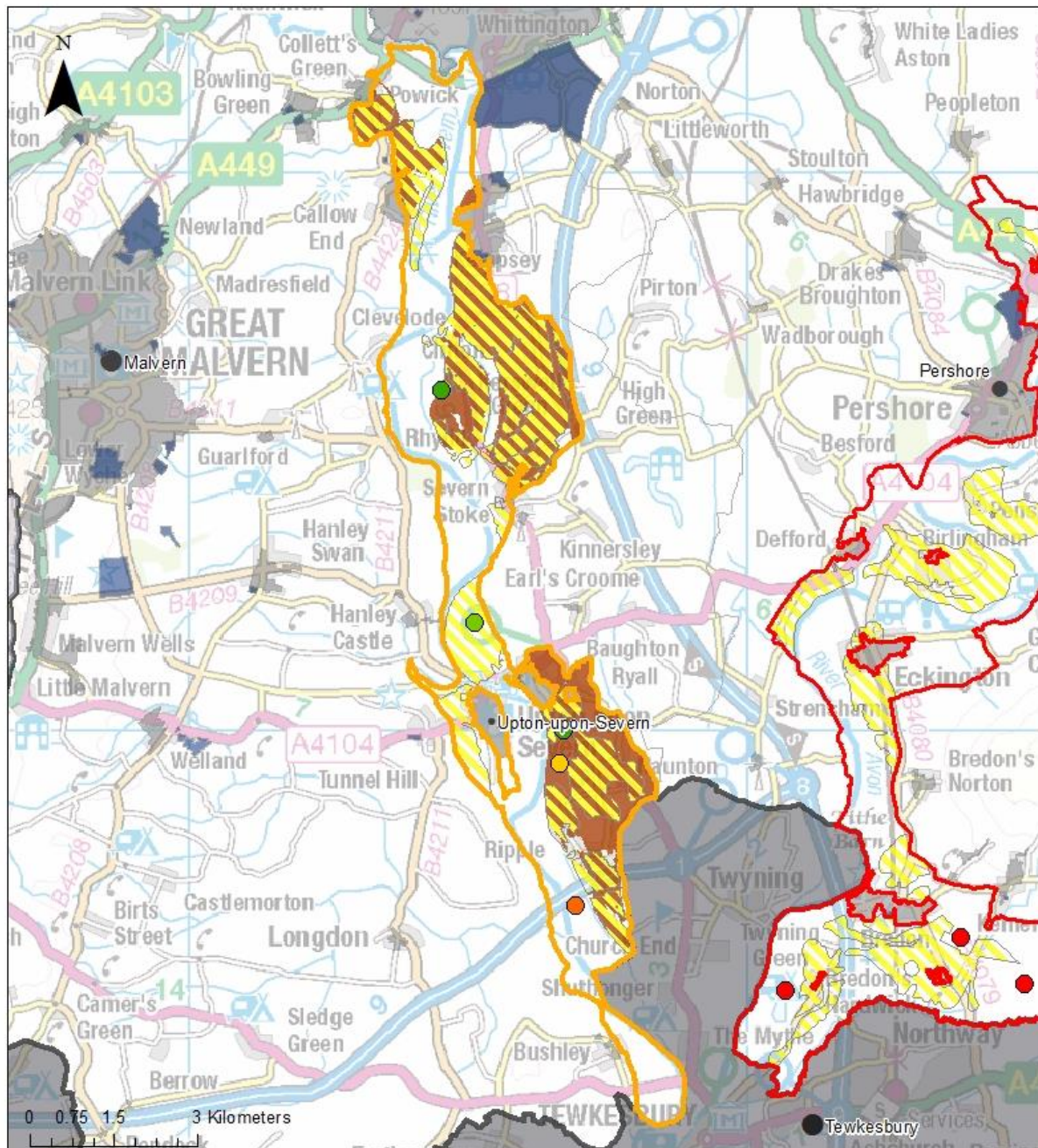
© Crown copyright and database rights 2018
Ordnance Survey
100024230

Derived from 1:50,000 scale
BGS Digital Data under
Licence 2001/125. Amended
British Geological Survey
© NERC

Former building stone quarry
data provided by Herefordshire
and Worcestershire Earth
Heritage Trust.

NOTE: The strategic corridors and areas of search can be viewed in more detail on the Policies Map (part of the interactive minerals mapping tool).

Appendix 5: Amended Figure 4.3. Lower Severn Strategic Corridor



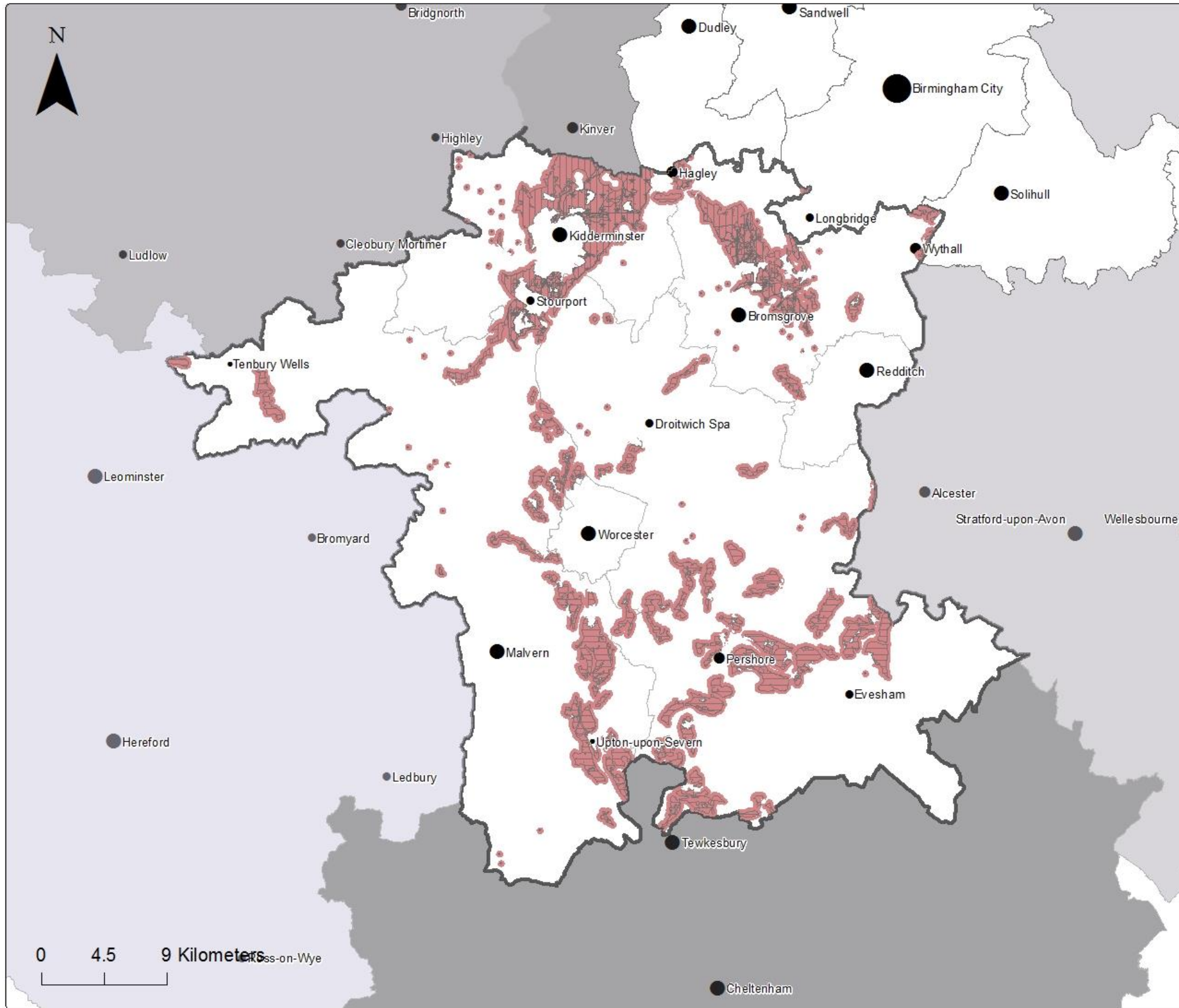
© Crown copyright and
 database rights 2018
 Ordnance Survey
 100024230

Derived from 1:50,000 scale
 BGS Digital Data under
 Licence 2001/125. Amended
 British Geological Survey
 © NERC

Former building stone quarry
 data provided by Herefordshire
 and Worcestershire Earth
 Heritage Trust

NOTE: The strategic corridors and areas of search can be viewed in more
 detail on the Policies Map (part of the interactive minerals mapping tool).

Appendix 6: Amended Figure 7.1. Mineral Safeguarding Areas and Mineral Consultation Areas



Legend

Mineral Safeguarding Areas

- Building Stone
- ▨ Terrace and Glacial Sand and Gravel
- ▨ Silica Sand (Wildmoor Formation)
- ▨ Solid Sands (Sand and Gravel)
- ▨ Crushed Rock
- ▨ Brick Clay

Mineral Consultation Areas

■

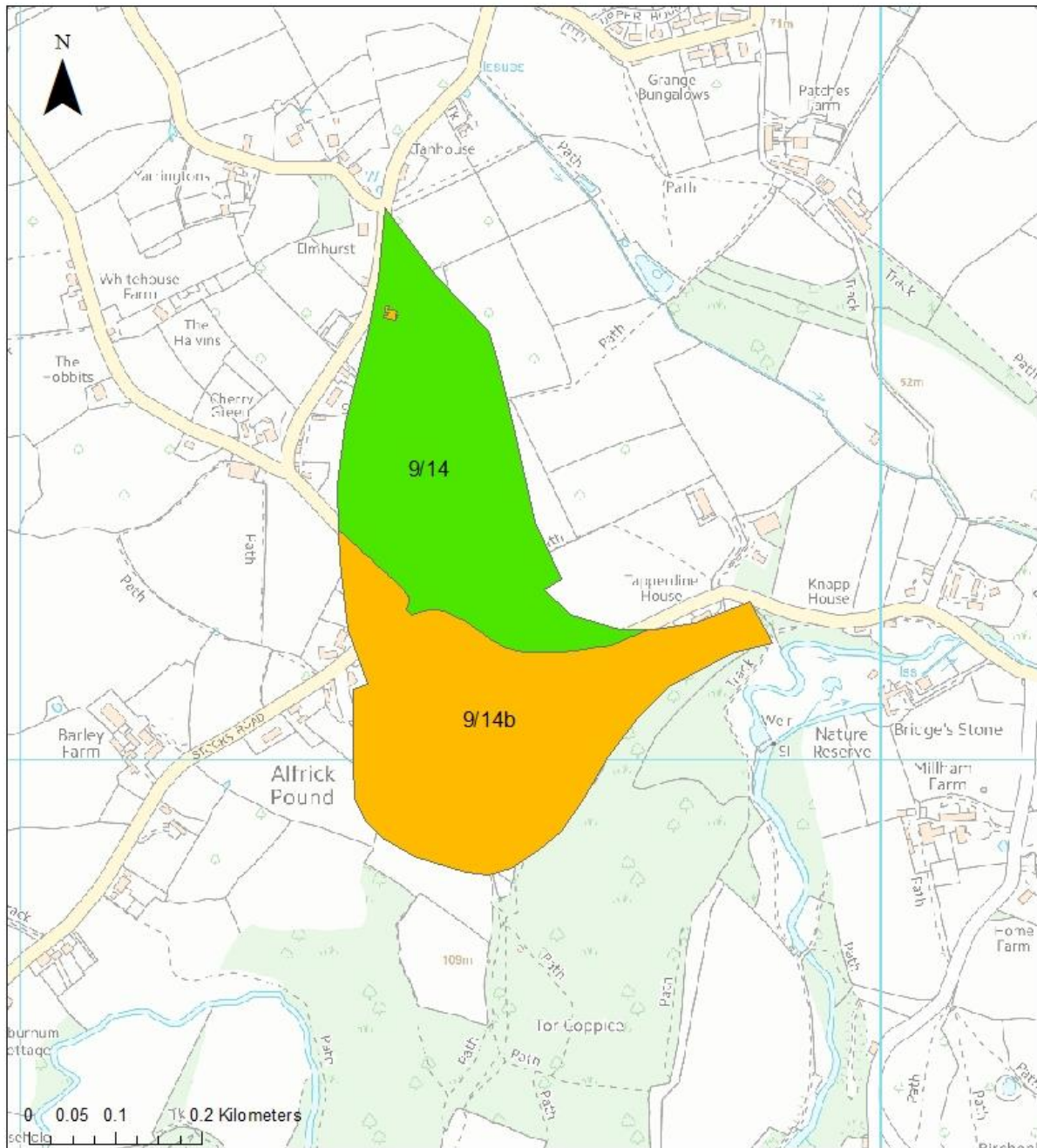
NOTE: The Mineral Safeguarding Areas and Mineral Consultation Areas can be viewed in more detail on the Policies Map (part of the interactive minerals mapping tool).

© Crown copyright and database rights 2018
Ordnance Survey
100024230

Derived from 1:50,000 scale
BGS Digital Data under
Licence 2001/125. Amended
British Geological Survey
© NERC

Former building stone quarry
data provided by Herefordshire
and Worcestershire Earth
Heritage Trust.

Appendix 7: Crushed rock resource 9/14



Legend

Crushed Rock Resources

- Significant
- Compromised

© Crown copyright and
database rights 2018
Ordnance Survey
100024230

Derived from 1:50,000 scale
BGS Digital Data under
Licence 2001/125. Amended
British Geological Survey
© NERC

NOTE: Mineral resources can be viewed in more detail on the interactive minerals mapping tool.

Appendix 8: Amended Figure 2.4. Crushed rock resources

