

# Extended Services in and around schools

## Bromsgrove Action Plan Progress Report

June 2008

The Bromsgrove Community and School Cluster Action Plan presents the work that the Extended Schools Team will be focusing on in Bromsgrove over the next 12 months to schools and partners. The objectives within the plan address the needs of the local community, support all schools in providing access to the full core offer of services and, most importantly, support all children and young people to achieve positive outcomes. Over time the action plans will strengthen to ensure we effectively narrow the gap in outcomes for specific groups of children and young people and improve the quality of life of every child's/young person's learning and achievement journey through early years settings, schools and colleges.

The content within this plan is a direct result of a structured local planning process that began in June 2007 with subsequent events in September 2007 and November 2007. This process has involved all schools and a wide range of partner agencies and organisations and the priorities for this Cluster have come from those events.

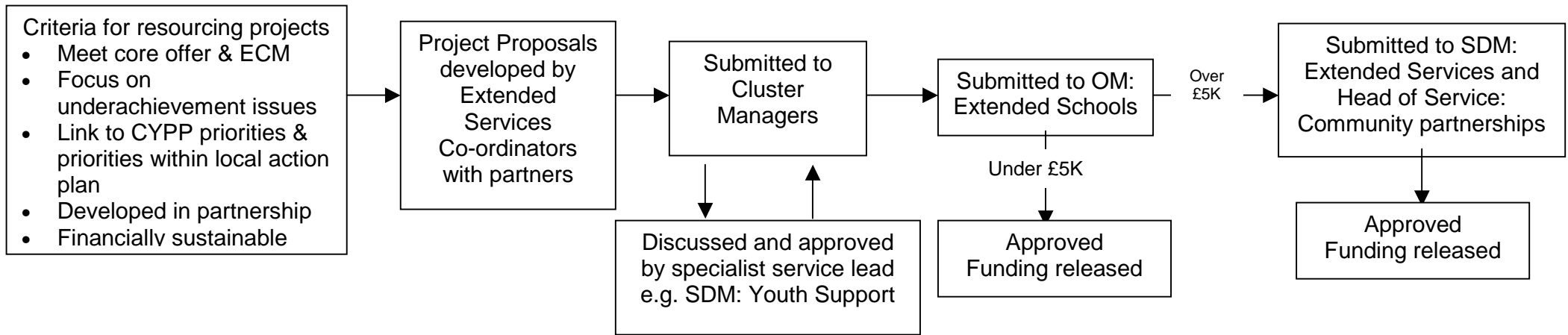
The plan also includes actions that build on local and national good practice, partnership working and supporting schools and/or the local authority to meet their statutory duties. All the financial costs identified next to projects are indicative at this stage and based on this financial year; more detailed costs will be clarified as project proposals develop. The approval process for this release of funding is outlined over the page.

On reviewing the emerging priorities of all 12 Community and School Clusters, it became evident that, while the Cluster structures are still evolving, a number of services would be best developed across the county to ensure consistency and best value. This supports Worcestershire in meeting the central government target of all schools providing access to a 'core offer' of services by 2010. Therefore, all 12 Community and School Cluster action plans have been divided into three main sections. Section 1 focuses on those areas of work to be implemented locally to meet specific needs but which will benefit from countywide co-ordination. Section 2 outlines priorities and actions that are being developed to address issues that are specific to the Bromsgrove Cluster and which will be delivered through local arrangements. Section 3 contains projects, which have been identified as priorities but require further exploration regarding how to implement them locally: it is likely these areas of work will move into Section 1 and 2 when the plans are reviewed.

The action plan will be formally reviewed on a regular basis. However, the plans will remain flexible to enable the Extended Schools Team to harness new innovative ideas and projects which will continue meeting the needs of Children and Young People in Worcestershire. Schools and partners will be kept informed of progress via the Extended Services Newsletter and by regular monitoring reports.

All the plans, supportive information and progress reports will be published on [www.worcestershire.gov.uk/extendedschools](http://www.worcestershire.gov.uk/extendedschools) or [www.edulink.networks.net](http://www.edulink.networks.net).

## Approval process for projects



If funding is used to appoint County Council Staff, which includes staff based within schools, Children's Services Leadership Team will sign an official approval form.

## Section 1

This section of the plan outlines those actions that will be locally delivered but supported by central co-ordination. These actions are a direct result of priorities identified across the county through the Community and School Cluster planning process. The actions also build upon knowledge of existing gaps in provision in relation to the Extended Services Core Offer. For consistency and best value, it makes sense to co-ordinate these actions centrally working with each Cluster to identify local delivery mechanisms. A three-year approach has been taken for all of these projects building in a clear sustainability strategy; it is anticipated that after this time a co-ordinated countywide approach may not be necessary.

**The resources within this section reflect individual Cluster allocations (i.e. specific to Bromsgrove)**

<b>1. All schools are providing access to the full core offer of services by 2010</b>			
<i>Baseline information: Extended Schools audit</i>			
<i>Measures: Extended Schools audit</i>			
<i>Rationale: Local Authority extended schools target, supports all elements of the Every Child Matters agenda, supports schools to address aspects of underachievement</i>			
<b>Objective / Success Criteria / Cost</b>		<b>Action</b>	<b>Update / progress</b>
<b>1.1</b>	<p><b>To continue to manage an Extended Schools Team which provides schools with direct support for developing and delivering extended services</b></p> <ul style="list-style-type: none"> <li>• Schools meet the core offer</li> <li>• £68,454</li> </ul>	<ul style="list-style-type: none"> <li>• Deploy ½ Cluster Manager and 1 ½ FTE Extended Services Co-ordinators to support developments across Bromsgrove</li> <li>• Ensure each member of the team has access to the appropriate support e.g. phones, laptops and travel</li> </ul>	<ul style="list-style-type: none"> <li>• Amrit Johal has been appointed to replace Tara Foster. Amrit started on the 12<sup>th</sup> May 2008</li> </ul>
<b>1.2</b>	<p><b>Monitor the progress of extended services developments including the impact on Children and Young People</b></p> <ul style="list-style-type: none"> <li>• Audit tool in place and populated</li> <li>• Schools using information from the tool in their SEF</li> </ul>	<ul style="list-style-type: none"> <li>• Develop an electronic web-based audit tool that monitors the level of services on offer</li> <li>• Develop a monitoring system that allows schools to monitor the impact of extended services on students</li> </ul>	<ul style="list-style-type: none"> <li>• Electronic audit tool is currently being tested. Will be introduced to schools in autumn term and will be able to provide supportive evidence for school's SEFs</li> <li>• Various monitoring systems are currently being tested to track the impact of projects</li> </ul>
<b>Total</b>			<b>£68,454</b>

## 2. More children and young people are accessing 5 hours of sporting activities a week

*Baseline information: Gathered through the Community Sports Partnership*

*Measures: Gathered through the Community Sports Partnership*

*Rationale: Supports the Youth Matters agenda, positive activities for young people has been identified as a priority through the Extended Services Planning Process, relies on match funding from Sport England, Trailblazer Authority*

Objective / Success Criteria / Cost		Action	Update / Progress
2.1	<p><b>Work in partnership with the County Sports Partnership and Youth Support to offer a 5 hour entitlement to “Extended Activities” for children and young people</b></p> <ul style="list-style-type: none"> <li>Contract in place by June 08</li> <li>Plans approved by June 08</li> <li>£20,000</li> </ul>	<ul style="list-style-type: none"> <li>Develop requirements of usage of funding and draw up an appropriate contract</li> <li>Ensure all Cluster Managers, Youth Team Managers, PDMs and SDOs are actively involved in developing local plans for implementing the 5 hour offer</li> </ul>	<ul style="list-style-type: none"> <li>Contract has been developed and has been sent for signature</li> <li>Funding will be released as soon as signed contracts are returned</li> </ul>
<b>Total</b>			<b>£20,000</b>

## 3. More parents have access to information

*Baseline information: Information taken from Information to Parents Strategy*

*Measures: Yearly consultation with parents, Extended Schools audit*

*Rationale: Identified as a priority through the Extended Services Planning Process, elements of the Information to Parents Strategy and is a Local Authority Duty within the Childcare Act 2006*

Objective / Success Criteria / Cost		Action	Update / Progress
3.1	<p><b>Develop information sessions for parents at key transition points in <u>all</u> schools in Worcestershire</b></p> <ul style="list-style-type: none"> <li>All schools delivering information sessions</li> <li>Positive feedback from parents</li> <li>£1,904</li> </ul>	<ul style="list-style-type: none"> <li>Contribute towards the salary of Information Session Co-ordinator</li> <li>Develop and implement a training and resource package for ‘Information Champions’ within schools</li> <li>Monitor and evaluate information sessions delivered</li> </ul>	<ul style="list-style-type: none"> <li>A number of information sessions have taken place in schools across the county. Response from parents has been very positive</li> <li>Currently training school staff to enable them to deliver sessions on an ongoing basis</li> <li>Training will continue in the autumn term</li> </ul>
<b>Total</b>			<b>£1,904</b>

#### 4. More families, with school aged children, have access to Early Intervention Family Support

Baseline information: **Number of EIFSW currently in place**

Measures: **Number of Referrals**

Rationale: **Main priority identified by schools and partners, research demonstrates significant impact of raising achievement, requirement of use of funding**

Objective / Success Criteria / Cost		Action	Update / Progress
4.1	<p><b>Develop additional capacity to deliver early intervention family support in and around <u>all</u> schools across Bromsgrove</b></p> <ul style="list-style-type: none"> <li>Plan in place</li> <li>£23,912 based on January 09 roll out</li> </ul>	<ul style="list-style-type: none"> <li>Develop a project proposal and plan which defines the following                             <ul style="list-style-type: none"> <li>The type of EIFSW needed e.g. EIFSW posts</li> <li>Local management arrangements should new posts be established</li> <li>Budget Holding Lead Professional Role</li> <li>Links to the CAF process</li> <li>Impact measures</li> <li>Gather baseline information</li> <li>How family support work links to other work / activity in local areas</li> <li>Clear exit strategy in place</li> </ul> </li> </ul>	<ul style="list-style-type: none"> <li>Have received approval from Children's Services Leadership Team to appoint a Project Manager to lead the development of early intervention family support across Worcestershire</li> <li>Job description for the project manager is currently being drafted and will go out for advert shortly</li> <li>A project initiation document will be developed over the summer covering the bulleted action points</li> </ul>
<b>Total</b>			<b>£23,912</b>

#### 5. More parents accessing parenting courses

Baseline information: **Information gathered through mapping**

Measures: **Record of training**

Rationale: **Identified as a priority through the Extended Services Planning Process, elements of the Parenting Strategy**

Objective / Success Criteria / Cost		Action	Update / Progress
5.1	<p><b>Develop an appropriate range of training opportunities for practitioners providing parenting support</b></p> <ul style="list-style-type: none"> <li>More parents trained in delivering parenting programmes</li> </ul>	<ul style="list-style-type: none"> <li>Work with those leading on parenting workforce development to develop an appropriate plan for the ongoing training of practitioners</li> </ul>	<ul style="list-style-type: none"> <li>Extended Schools has recently supported the training of practitioners in Triple P parenting programme. Training has taken place and parenting courses are being developed</li> </ul>
<b>Total</b>			<b>TBC</b>

## 6. More schools and partners are involved in the development and delivery of extended services

Baseline information: **Number of meetings, attendance at planning days**

Measures: **Number of meetings, attendance at planning days**

Rationale: **Underpins the Extended Services In and Around Schools Strategy**

Objective / Success Criteria / Cost		Action	Update / Progress
6.1	<b>Develop a structured planning process delivered through Community and School Clusters that allows schools and partners to lead the development of local action plans</b> <ul style="list-style-type: none"> <li>Planning process developed</li> <li>Positive attendance at planning events</li> <li>£2,000</li> </ul>	<ul style="list-style-type: none"> <li>Work with EIAs and the TDA to design a suitable planning process</li> <li>Organise and implement the planning process, including booking venues, organising delegate packs</li> </ul>	<ul style="list-style-type: none"> <li>Future planning days will be organised when action plan needs reviewing</li> </ul>
6.2	<b>Develop a regular meeting pattern with all schools to ensure plans support aspects of underachievement</b> <ul style="list-style-type: none"> <li>Frequency of meetings of schools</li> </ul>	<ul style="list-style-type: none"> <li>Build relationships with school pyramids (where this is an appropriate structure) and regularly attend meetings</li> <li>Develop meetings for 'families' of schools</li> </ul>	<ul style="list-style-type: none"> <li>Attending meetings as appropriate</li> </ul>
<b>Total</b>			<b>£2,000</b>

## 7. More parents and practitioners, including schools, are using the Family Services Directory (FSD)

Baseline information: **Website hits, information collected at planning events**

Measures: **Website hits**

Rationale: **Identified as a priority through the Extended Services Planning Process, elements of the Information to Parents Strategy and is a Local Authority Duty within the Childcare Act 2006**

Objective / Success Criteria / Cost		Action	Update / Progress
7.1	<b>Develop the FSD to enable schools to use it more effectively</b> <ul style="list-style-type: none"> <li>FSD is developed in line with feedback from schools</li> <li>£835</li> </ul>	<ul style="list-style-type: none"> <li>Contribute towards the salary of a project manager who will lead the developments</li> <li>Contribute towards the cost of new information system if needed</li> </ul>	<ul style="list-style-type: none"> <li>All local authorities are currently being funded to procure a new IT system to maintain and deliver information on childcare, things to do and services that support children, young people and families. Worcestershire is currently going through the tender process and must have the new system fully operational by September 09</li> </ul>
7.2	<b>Promote the FSD through schools</b> <ul style="list-style-type: none"> <li>More schools are aware of FSD</li> </ul>	<ul style="list-style-type: none"> <li>Drop leaflets and marketing material off in schools</li> <li>Promote the FSD at meetings</li> <li>Put weblink to FSD onto schools websites</li> </ul>	<ul style="list-style-type: none"> <li>All schools will have a leaflet booklet to promote to parents</li> </ul>
<b>Total</b>			<b>£835</b>

## 8. More schools are engaging parents in decision making

Baseline information: **Number of schools with Parent Councils**

Measures: **Number of schools with Parent Councils**

Rationale: **Identified as an area for development through the Extended Services Planning Process and is an element of the Parent Engagement Strategy**

Objective / Success Criteria / Cost		Action	Update / Progress
8.1	<p><b>Continue to support schools to develop their expertise in engaging with parents</b></p> <ul style="list-style-type: none"> <li>• More Parent Councils</li> <li>• Evidence of improved practice within schools</li> <li>• Feedback from parents</li> <li>• £3,753</li> </ul>	<ul style="list-style-type: none"> <li>• Continue to contribute towards the salary of the Parent Engagement Adviser</li> <li>• Invest in a Parent Engagement Worker (2 years) to actively support schools to develop Parent Councils</li> <li>• Develop a Parent Engagement Toolkit</li> <li>• Ensure all ESCos are offering appropriate support to schools</li> <li>• Develop a common questionnaire for schools to use when consulting with parents</li> </ul>	<ul style="list-style-type: none"> <li>• Parent Engagement Adviser post is currently vacant due to staff promotion</li> <li>• Event is being organised for October to raise awareness of mechanisms and structures that support schools in this area of work and offer an opportunity to question and learn from national specialists</li> </ul>
<b>Total</b>			<b>£3,753</b>

## 9. More children and young people are engaged in learning

Baseline information: **FFT and School Census data for pupil achievement levels. FSP data**

Measures: **Increase in pupils attaining their projected attainment levels, percentage of primary school children who score 6 or better in CLL with a minimum of 78 overall**

Rationale: **Identified as priority through the Extended Services Planning Process**

Objective / Success Criteria / Cost		Action	Update / Progress
9.1	<p><b>Develop a mentoring scheme for children and young people who are becoming disengaged from learning</b></p> <ul style="list-style-type: none"> <li>• Mentoring scheme in place</li> </ul>	<ul style="list-style-type: none"> <li>• Map existing mentoring services currently on offer across Worcestershire</li> <li>• Identify target schools</li> <li>• Develop a project specification</li> <li>• Commission project</li> </ul>	<ul style="list-style-type: none"> <li>• No progress to report</li> </ul>
<b>Total</b>			<b>TBC</b>

## Section 2

These actions are a direct result of priorities identified through the Bromsgrove Community and School Cluster Planning Process, conversations with schools and partners, engagement with children and young people and interrogation of statistical needs analysis information.

**The resources allocated against actions will be devolved locally**

<b>10. More children and young people have greater communication and language skills</b>			
<i>Baseline information: Speech and language data from FSP for reception figures. Key Stage 1 data for Year 1 figures</i>			
<i>Measures: Percentage of children who score 6 or better in the CLL with a minimum of 78 overall</i>			
<i>Rationale: The Speech and Language Team recognised a need to deliver support to a wider target group</i>			
<i>Head teachers recognise a need for additional support and more creative strategies to improve children and young people's listening skills and their ability to express themselves in an appropriate manner</i>			
<b>Objective / Success Criteria / Cost</b>		<b>Action</b>	<b>Update / Progress</b>
<b>10.1</b>	<b>To improve access to communication and language support for Reception and Year 1</b> <ul style="list-style-type: none"> <li>• 100% schools participation in programme</li> <li>• £3,000</li> </ul>	<ul style="list-style-type: none"> <li>• Promote and support the development of a listening skills programme in all first and primary schools</li> </ul>	<ul style="list-style-type: none"> <li>• It has been offered to all schools</li> <li>• 10 schools have booked the Listening Skills programme</li> <li>• 4 schools will have completed by Summer Term 2008</li> </ul>
<b>10.2</b>	<b>Introduce alternative ideas to improve communication and language skills in high schools</b> <ul style="list-style-type: none"> <li>• Programme in place and implemented</li> <li>• £1,000</li> </ul>	<ul style="list-style-type: none"> <li>• Pilot access to the Samaritans DEAL programme</li> </ul>	<ul style="list-style-type: none"> <li>• Introductory meetings are being held</li> <li>• Briefings planned for schools in September</li> </ul>
<b>10.3</b>	<b>Introduce alternative ideas to improve communication and language skills in primary, first &amp; middle schools</b> <ul style="list-style-type: none"> <li>• Project developed and implemented</li> <li>• Number of schools participating and arrangements in place</li> <li>• £21,500</li> </ul>	<ul style="list-style-type: none"> <li>• Pilot a three year project with C &amp; T</li> </ul>	<ul style="list-style-type: none"> <li>• Pilot started at Meadows and Finstall First Schools</li> <li>• A short project has taken place at Blackwell First School during the Summer Term 2008</li> </ul>
		<ul style="list-style-type: none"> <li>• Pilot a project with Sound Together</li> </ul>	<ul style="list-style-type: none"> <li>• Awaiting details of pilot national programme</li> </ul>
		<ul style="list-style-type: none"> <li>• Support schools to develop links with Bromsgrove Independent Schools</li> </ul>	<ul style="list-style-type: none"> <li>• Initial meetings have taken place</li> </ul>
<b>10.4</b>	<b>Introduce alternative ideas to support the literacy curriculum in school</b> <ul style="list-style-type: none"> <li>• 100% school participation</li> </ul>	<ul style="list-style-type: none"> <li>• Develop a regular school page for pupils to write articles for a local newspaper</li> </ul>	<ul style="list-style-type: none"> <li>• It has been offered to all schools</li> <li>• 15 schools have booked to do a page</li> <li>• 5 schools have had pages published so far</li> </ul>
<b>Total</b>			<b>£25,500</b>

## 11. More adults have access to learning opportunities within their communities

Baseline information: *Uptake data from Adult Learning Centres, MARC and Connexions. NEET data*

Measures: **Number of individuals accessing adult learning provision**

Rationale: **Need identified by head teachers and adult learning providers during discussions at planning days**

Issues also raised through **Bromsgrove Lifelong Learning Network (BLLN)**

Objective / Success Criteria / Cost		Action	Update / Progress
11.1	<b>Increase the number of Personal and Community Development Learning (PCDL) courses in and around schools</b> <ul style="list-style-type: none"> <li>Increased number of adult learning providers offering courses locally, appropriate to identified need</li> <li>£500</li> </ul>	<ul style="list-style-type: none"> <li>Develop partnerships between adult learning providers and schools</li> <li>Develop relationships between Learning Ambassadors and schools to identify adult need</li> </ul>	<ul style="list-style-type: none"> <li>Initial meeting held</li> <li>Information from Learning Providers has been shared with all first and middle schools</li> </ul>
11.2	<b>Increase informal learning opportunities</b> <ul style="list-style-type: none"> <li>Increased number of opportunities available</li> <li>£500</li> <li>Project identified and implemented</li> <li>£500</li> </ul>	<ul style="list-style-type: none"> <li>Support MARC to expand their partnerships and deliver sustainable services in response to local need</li> </ul>	<ul style="list-style-type: none"> <li>Homework Club with South Bromsgrove High has been set up at MARC</li> </ul>
		<ul style="list-style-type: none"> <li>Pilot a project between Job Centre Plus outreach, local children's centres and schools targeting areas with high unemployment</li> </ul>	<ul style="list-style-type: none"> <li>Initial meeting held</li> </ul>
<b>Total</b>			<b>£1,500</b>

## 12. An increased number of families supported by early intervention

*Baseline information: Domestic violence and homelessness figures from DWP 2008 baseline data and Instant Atlas*

*Measures: Percentage of reported domestic violence cases and numbers of homeless individuals*

*Rationale: Domestic violence and homelessness have been identified as district concerns (Bromsgrove District Crime & Disorder Partnership and Instant Atlas). Chadsgrove Specialist Sports College identified a need to increase early support for children to develop fine and gross motor skills*

Objective / Success Criteria / Cost		Action	Update / Progress
12.1	<b>Support schools to access counselling services for children</b> <ul style="list-style-type: none"> <li>Project developed and implemented</li> <li>£15,000</li> </ul>	<ul style="list-style-type: none"> <li>Pilot a project with primary, first and middle schools</li> </ul>	<ul style="list-style-type: none"> <li>Initial meeting held</li> </ul>
12.2	<b>Support homelessness prevention</b> <ul style="list-style-type: none"> <li>Project developed and implemented</li> <li>£4,000</li> </ul>	<ul style="list-style-type: none"> <li>Develop a Homelessness Prevention Project with the Education Initiative Group</li> </ul>	<ul style="list-style-type: none"> <li>Planning group formed (Led by Bromsgrove District Council)</li> <li>Action Plan drawn up</li> </ul>
12.3	<b>Support targeted children to develop fine and gross motor skills</b> <ul style="list-style-type: none"> <li>Project developed and implemented</li> <li>£15,000</li> </ul>	<ul style="list-style-type: none"> <li>Pilot a project through which children will be assessed in their school setting, then follow a planned programme which will then link to after school activities</li> </ul>	<ul style="list-style-type: none"> <li>Project started and steering group has been set up</li> <li>Working in schools from September 2008</li> </ul>
<b>Total</b>			<b>£34,000</b>

## 13. More families have access to family learning opportunities

*Baseline information: Library Service baseline data*

*Measures: Number of recorded individuals accessing Library Service facilities*

*Rationale: Needs Identified through planning days for more family learning to take place in informal community settings*

Objective / Success Criteria / Cost		Action	Update / Progress
13.1	<b>Increase numbers of families accessing Library Services</b> <ul style="list-style-type: none"> <li>Project developed and implemented</li> <li>£1,000</li> </ul>	<ul style="list-style-type: none"> <li>Pilot a project with Library Services</li> </ul>	<ul style="list-style-type: none"> <li>Initial meeting held</li> <li>Supported the recruitment of Dads &amp; Lads for project at Bromsgrove Library</li> </ul>
<b>Total</b>			<b>£1,000</b>

## 14. Activities are more easily accessed by children and young people

Baseline information: *Transport department baseline figures*

Measures: *The number of children using transport to access out-of-school activities*

Rationale: *Concerns about current transport arrangements restricting children and young people's access to out-of-school activities were raised by head teachers at School Focused Planning Day. Head teachers requested more information about out-of-school activities taking place at local schools*

Objective / Success Criteria / Cost		Action	Update / Progress
14.1	<b>Improve access to transport</b> <ul style="list-style-type: none"> <li>Focus group set up and strategies in place</li> <li>£500</li> <li>Project developed and implemented</li> <li>£500</li> </ul>	<ul style="list-style-type: none"> <li>Set up a focus group to explore local solutions</li> </ul>	<ul style="list-style-type: none"> <li>No progress to report</li> </ul>
		<ul style="list-style-type: none"> <li>Develop a project to encourage use of public transport independently</li> </ul>	<ul style="list-style-type: none"> <li>Initial meeting held</li> </ul>
14.2	<b>Improve communication between schools about extended services activities</b> <ul style="list-style-type: none"> <li>Strategies developed and piloted</li> <li>£4,000</li> </ul>	<ul style="list-style-type: none"> <li>Explore communication strategies between schools to help signpost to local extended services activities</li> </ul>	<ul style="list-style-type: none"> <li>No progress to report</li> </ul>
14.3	<b>Support Bromsgrove Schools Arts Fortnight</b> <ul style="list-style-type: none"> <li>Attend meetings</li> <li>Event takes place</li> <li>£1,000</li> </ul>	<ul style="list-style-type: none"> <li>Support the festival organising group by attending meetings and being involved in the festival</li> </ul>	<ul style="list-style-type: none"> <li>Completed</li> <li>Festival takes place between 23<sup>rd</sup> June - 4<sup>th</sup> July</li> <li>6 schools received funding for transport to attend</li> </ul>
<b>Total</b>			<b>£6,000</b>

### 15. Lower teenage pregnancy conception rate

Baseline information: *Connexions and E-Start data on teenage pregnancy figures*

Measures: **Reduction in the number of teenage pregnancies**

Rationale: **Lack of teenage pregnancy prevention programmes in Wythall identified by youth workers and school staff**

Objective / Success Criteria / Cost		Action	Update / Progress
15.1	<b>Increase informal education teenage pregnancy prevention programmes available to young people</b> <ul style="list-style-type: none"> <li>• Course delivered and staff trained</li> <li>• Project developed and implemented</li> <li>• £1,500</li> </ul>	<ul style="list-style-type: none"> <li>• Work with Worcestershire PCT to offer training courses for professionals in use of Virtual babies</li> </ul>	<ul style="list-style-type: none"> <li>• No progress to report</li> </ul>
		<ul style="list-style-type: none"> <li>• Pilot a 'Virtual baby' project</li> </ul>	<ul style="list-style-type: none"> <li>• No progress to report</li> </ul>
<b>Total</b>			<b>£1,500</b>

### Section 3

This section of the plan outlines priorities and actions that require further central exploration as to how to implement them locally. These actions build on good practice, locally and nationally, and will support schools and/or the local authority to meet their statutory duties. It is envisaged over time these actions will be delivered locally.

**Resources allocated against these actions are countywide costs (i.e. total across all 12 Clusters)**

<b>16. All schools are actively promoting Community Cohesion</b>		
<i>Baseline information: Content in School Development Plans, SEFs,</i>		
<i>Measures: Content in SDP, SEFs and Cluster Action Plans, case studies of good practice, feedback from OfSTED</i>		
<i>Rationale: Legal duty, identified as an area for development through the Extended Services Planning Process, supports other areas of Children's Services</i>		
<b>Objective / Success Criteria / Cost</b>	<b>Action</b>	<b>Update / Progress</b>
<b>16.1 Provide ongoing support for a community cohesion strategy which supports Worcestershire schools to meet the new duty to promote community cohesion</b> <ul style="list-style-type: none"> <li>Positive OfSTED reports on schools implementing community cohesion duty</li> <li>£5,000 (approx)</li> </ul>	<ul style="list-style-type: none"> <li>Support schools to develop implementation plans designed to meet the duty to promote community cohesion</li> <li>Develop a network of schools that can cascade information to other schools</li> </ul>	<ul style="list-style-type: none"> <li>In order to ensure that support for schools is coherent, we have adopted an overall strategy that has centred upon commissioning the Institute of Community Cohesion (ICoCo) to devise a three step approach               <ol style="list-style-type: none"> <li>Form a network of 9 pilot schools</li> <li>Run a conference on the 25<sup>th</sup> June</li> <li>Form hubs around the 9 pilot schools</li> </ol> </li> <li>Work is taking place on developing phase 2 of the strategy which will involve supporting all schools across Worcestershire</li> </ul>
		<b>Total</b> <b>£5,000</b>

<b>17. More school leaders are community leaders</b>		
<i>Baseline information: To be developed</i>		
<i>Measures: School leaders accessing community leadership training</i>		
<i>Rationale: Good quality community leadership in schools has been widely documented as a key success factor in the Extended Services Agenda</i>		
<b>Objective / Success Criteria / Cost</b>	<b>Action</b>	<b>Update / Progress</b>
<b>17.1 Support the development of school leaders as community leaders</b> <ul style="list-style-type: none"> <li>To be determined by OM:PLD</li> <li>£20,000 (approx)</li> </ul>	<ul style="list-style-type: none"> <li>Work with the Operational Manager: Professional Learning and Development, to develop a strategy and subsequent action plan</li> </ul>	<ul style="list-style-type: none"> <li>Discussions are taking place to link community leadership with succession planning for leaders within schools</li> </ul>
		<b>Total</b> <b>£20,000</b>

## 18. More parents have access to information

Baseline information: *Information taken from original research*

Measures: *Yearly consultation with parents, Extended Schools Audit*

Rationale: *Identified as a priority through the Extended Services Planning Process, elements of the Information to Parents Strategy and is a Local Authority Duty within the Childcare Act 2006*

Objective / Success Criteria / Cost		Action	Update / Progress
18.1	<p><b>Develop information areas for parents in schools and other appropriate community venues</b></p> <ul style="list-style-type: none"> <li>All schools have a parent information area</li> <li>£65,000 (approx figures to support all 250 schools)</li> </ul>	<ul style="list-style-type: none"> <li>Install leaflet racks and notice boards in most schools</li> <li>Train appropriate members of staff to ensure areas are maintained</li> <li>Maintain electronic information kiosks in schools</li> </ul>	<ul style="list-style-type: none"> <li>Supporting schools to buy notice boards and leaflet racks</li> <li>Investigating installing life channel into schools</li> </ul>
<b>Total</b>			<b>£65,000</b>

## Total Resource Allocation

Section 3 Centrally led projects (Countywide costs)	Resources allocated to Bromsgrove
<b>£90,000</b>	<b>£190,358</b>

The funding amounts are only estimates at this stage and are likely to change once projects / services develop. The change in these amounts will be reflected in the formal review of this plan. Additional resources may well be identified to support areas of work yet to be identified, once again these will be reflected when the plan is refreshed. In the event that there should be any funding remaining consideration will be given to supporting emerging priorities or devolving funding directly to individual schools.