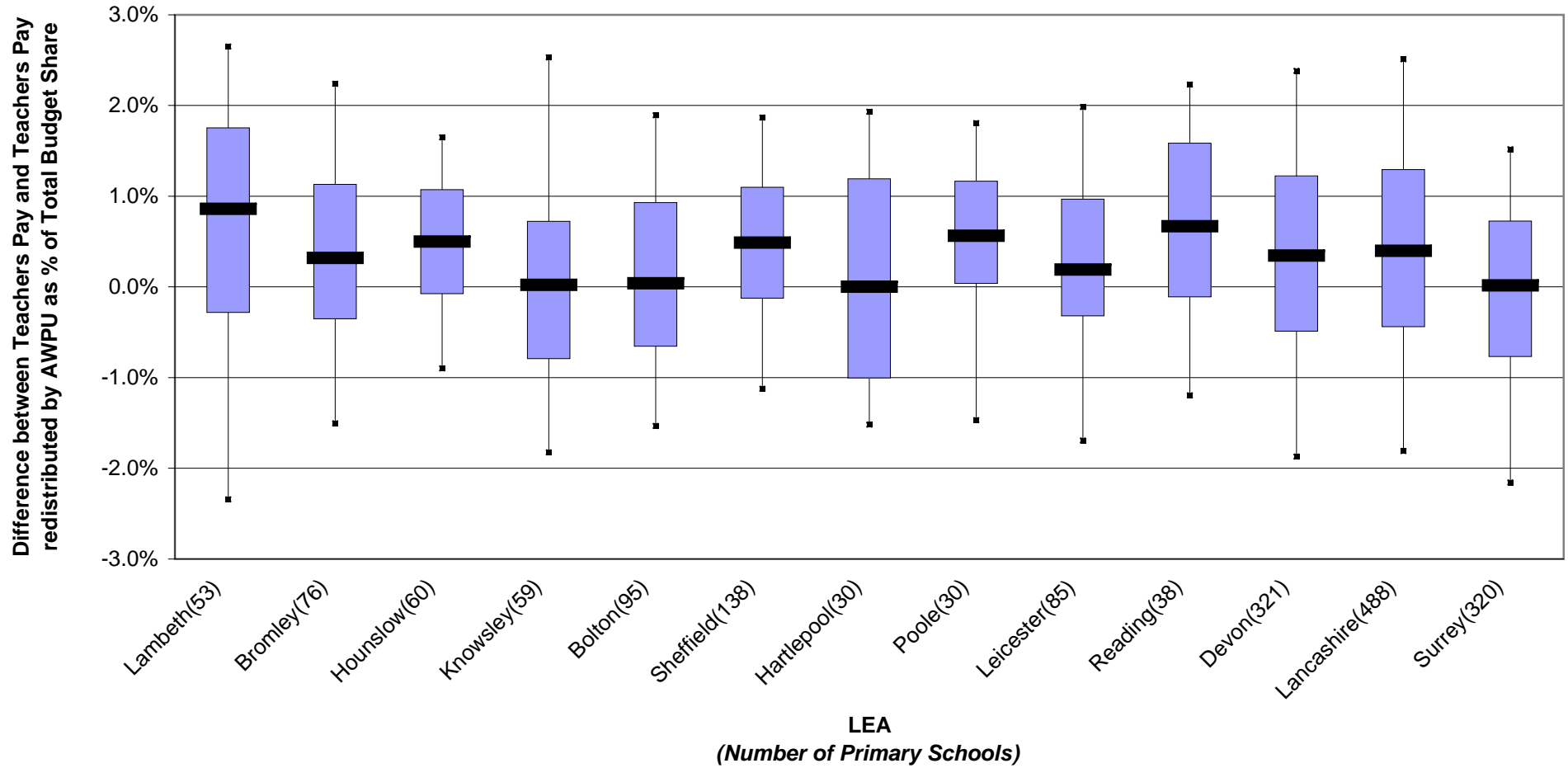


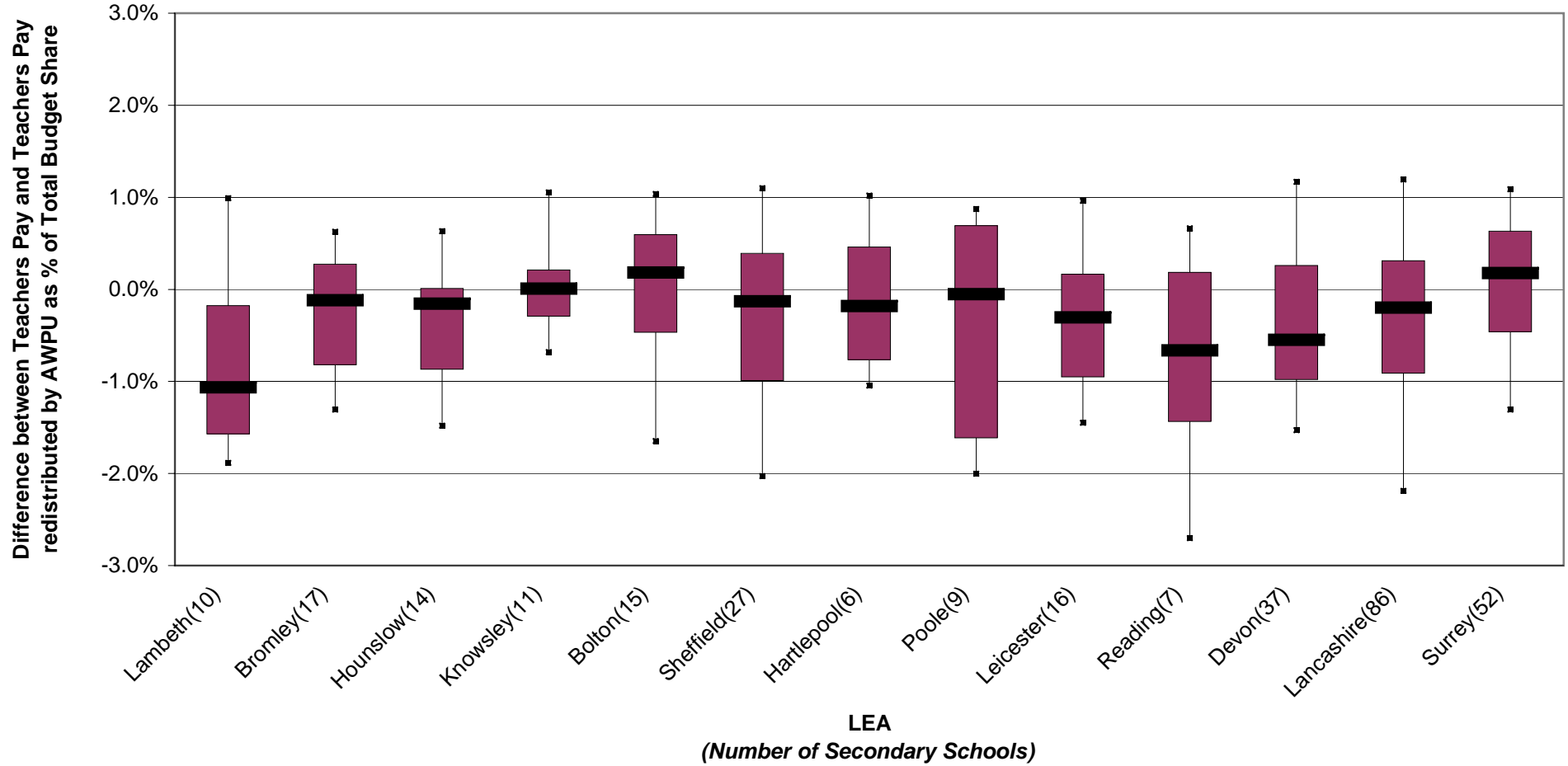
Annex A

Primary Schools  
Difference between Teachers Pay and Teachers Pay redistributed by AWPU as % of Total Budget Share  
split LEA  
(Whiskers are from the 5th to the 95th percentile, boxes from the 25th to the 75th percentile)



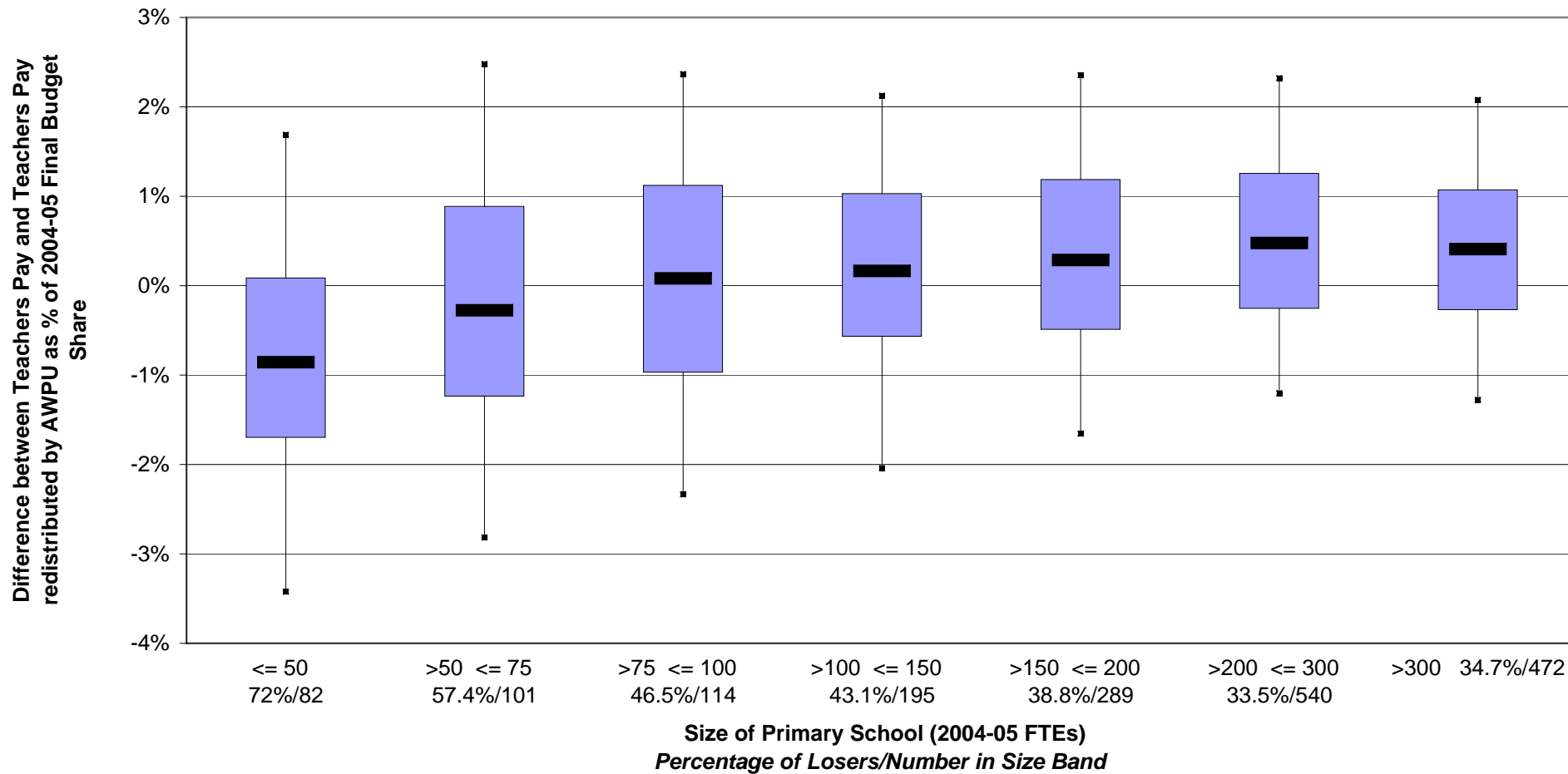
**Annex B**

**Secondary Schools**  
**Difference between Teachers Pay and Teachers Pay redistributed by AWPU as % of Total Budget Share**  
**split LEA**  
**(Whiskers are from the 5th to the 95th percentile, boxes from the 25th to the 75th percentile)**



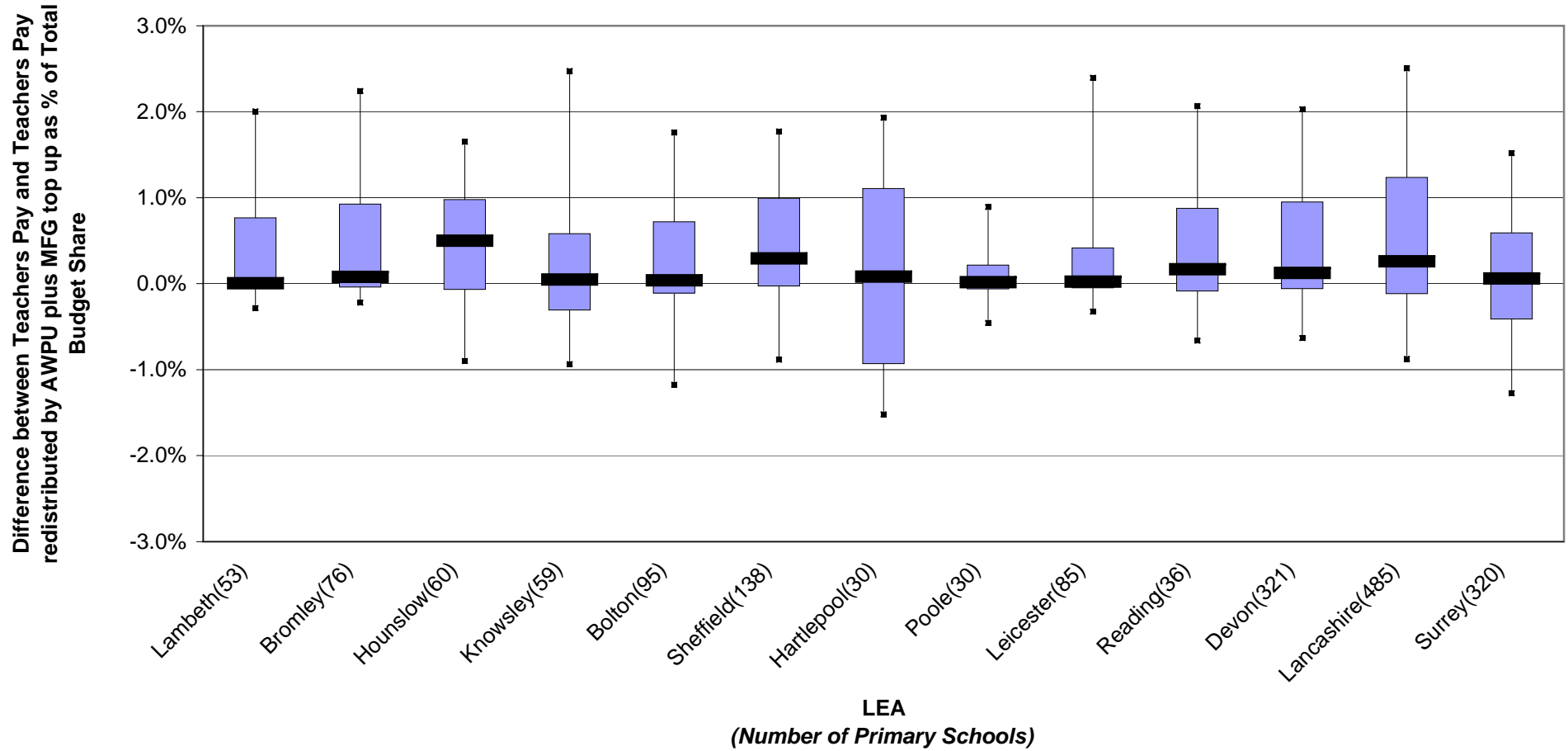
**Annex C**

**Primary Schools**  
**Difference between Teachers Pay and Teachers Pay redistributed by AWP as Percentage of 2004-05 Final Budget Share**  
**split by School Size**  
 (Whiskers are from the 5th to the 95th percentile, boxes from the 25th to the 75th percentile)



**Annex D**

**Primary Schools**  
**Difference between Teachers Pay and Teachers Pay redistributed by AWPU plus MFG top up**  
**as % of Total Budget Share**  
**split LEA**  
**(Whiskers are from the 5th to the 95th percentile, boxes from the 25th to the 75th percentile)**



**Annex F**

**Secondary Schools**  
**Difference between Teachers Pay and Teachers Pay redistributed by AWPU plus MFG top up**  
**as % of Total Budget Share**  
**split LEA**  
**(Whiskers are from the 5th to the 95th percentile, boxes from the 25th to the 75th percentile)**

