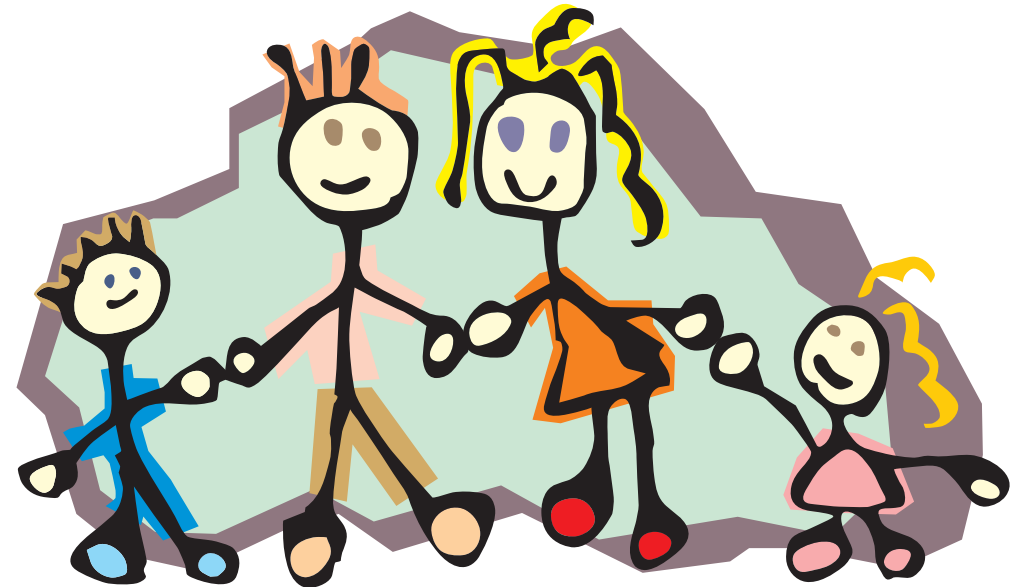


**To obtain more information about the Educational Psychology teams in Worcestershire contact:**

**Parent Partnership** – 01905 727940, email: [ppservice@worcestershire.gov.uk](mailto:ppservice@worcestershire.gov.uk)

**Family Information Service** – 01905 790560, email: [familyinfo@worcestershire.gov.uk](mailto:familyinfo@worcestershire.gov.uk)

**Worcestershire County Council Hub** – 01905 765765



This publication can be made available in other languages and alternative formats (including large print, audio tape, computer disc and Braille) on request from Parent Partnership Service on telephone number 01905 727940 or by emailing [ppservice@worcestershire.gov.uk](mailto:ppservice@worcestershire.gov.uk)

To the best of our knowledge all information is correct at time of printing February 2010.

53356 02/10

## Parent Partnership Service Information for Parents

# Educational Psychology Services

**You can contact us at:**

Parent Partnership Service, PO Box 73, Worcester, WR5 2YA

Tel: 01905 727940 • Fax: 01905 727949 • Email: [ppservice@worcestershire.gov.uk](mailto:ppservice@worcestershire.gov.uk)

# Introduction

Educational Psychologists support the emotional wellbeing and enjoyment of children and young people within school and their progress with learning.

## Aims:

To use psychology to achieve the following objectives:

- To ensure the safety and basic needs of children and young people are met.
- To promote a sense of belonging and value within the community.
- To develop self-esteem and reduce the anxiety levels of children and young people.
- To help children and young people reach their potential in relation to learning and achievement.

## Who we are

Educational Psychologists have a wide experience of working within pre-school and school settings supporting children and young people. They have advanced qualifications including a masters/doctorate degree which is recognised as professional training by the Health Professionals Council.

## How we support

Education Psychology provides a service within a range of community settings such as pre-school, school, children's homes and centres. We do this by providing psychologically based advice to support children and young people in the following ways:

### Individual assessments/interventions

- As required by the Special Educational Needs Code of Practice and also the Common Assessment Framework.
- Suggesting creative approaches that will support children and young people with complex needs where there is a barrier to learning/engagement.
- Developing approaches to achieve positive changes in behaviour, emotional well-being and learning in all aspects of their life.
- Providing appropriate advice to a range of staff working with children and young people.

### Group Work

- Promoting evidence-based interventions/suggestions to support emotional and behavioural issues within schools and pre-school settings e.g. anxiety etc.
- Providing parental and professional support groups with a focus on positive solutions.
- Promoting effective professional supervision and support.

## Work with organisations

- Training and policy development for schools and pre-schools
- Tackling key issues that relate to Every Child Matters [The government's priority objectives for children and young people] e.g. anti-bullying initiatives.
- Projects impacting on children and young people with specific needs e.g. Looked after Child, Autism, Dyslexia, attention and concentration difficulties.

# The procedure for accessing support from the Educational Psychology Service for a child with Special Educational Needs.

According to the Code of Practice (2001 Education Act) parents with any concerns should:

- discuss concerns with their child's or young person's school / early years setting
- be informed by the SENCo (Special Educational Needs Coordinator) of the child's or young person's stage on the Code of Practice e.g. School Action, School Action Plus and the professionals who are involved
- be involved in the development of an Individual Education Plan (IEP) and attend regular reviews at School (or Early Years) Action or School (or Early Years) Action Plus
- contact Parent Partnership if they feel the child's or young person's needs are still not being met
- discuss the involvement of the Educational Psychology Service with the school / early years setting SENCo if concerns remain
- discuss any further concerns with school or pre-school and appropriate agencies including Parent Partnership Service
- discuss with your G.P concerns which are primarily of a medical nature

# What to expect from Educational Psychology involvement

When an Educational Psychologist is involved they will, as appropriate:

- collect information and views from various sources including parents, school staff, support services, health professionals and the child or young person.
- provide an EP perspective of the current needs of the child or young person.
- work with the child or young person and talk to staff / agencies involved.
- liaise with parents.
- encourage multi – agency working.