

# Worcester Connect2: Diglis Walk and Cycle Bridge

*In December 2007, Worcester residents successfully voted to make the Diglis Bridge a reality by voting for the Sustrans Connect2 bid during the Big Lottery Fund's 'Living Landmarks: The People's Millions' competition'. The Diglis Bridge will be positioned just south of Diglis Island, linking to Weir Lane footpath on the west side and Navigation Road on the east side. The Bridge and the supporting g links will provide vital routes for Worcester, Malvern and Powick residents. The Bridge will connect Powick and Lower Wick with the city centre, using Route 46 of the National Cycle Network and will also significantly enhance links between St Johns and Cherry Orchard, Red Hill and St Peters.*

## Site Works Bulletin - July 2010

### Works on site this month:

All the Bridge sections are now in place with the last section being installed on Sunday 27 June. There is still plenty of work to do before the Bridge can be opened.

The three deck connection points are still been worked on, evidenced by the deck scaffolding. The decks are joined with 48 no. 24mm diameter bolts to each connection point, a total of 288 bolts. The connections have to be painted to the same specification as the rest of the Bridge and then concealed with a cover plate, which is also then painted. The underside of the deck is stiffened using diagonal 'L' shaped bracers, which have to be welded and painted in-situ. Once the connections are completed and the deck profile is adjusted to its final position, the scaffolding will be removed.

The staircases that will lead down from the deck to the south on both banks are due to arrive and be installed around the middle of this month. Work is currently continuing on the installation of the two handrails. The upper handrail is a FSC-sourced European hardwood, which contrasts with the other steel and aluminium Bridge materials. The lower stainless steel handrail incorporates the Bridge lighting. The lighting units are low-level, energy efficient LEDs that light the Bridge enclosure but have minimal impact on the wildlife, especially the bats. The mast will also be lit by four narrow beam feature lights. The parapets will be finished and infilled with 11 rows of 6mm diameter stainless steel wire.

The lighting will continue from the bottom of both ramps to Weir Lane and Navigation Road on 5m high lighting columns fitted with LED lanterns. This will give a continuous lit link from Weir Lane to Navigation Road/Diglis Dock Road and eventually both banks of the riverside walk to the City.

The cables are being painted a Dark Grey to compliment the White Grey of the Bridge beams and parapets. The painting is done in-situ using a cherry picker and an Operative with a head for heights! The footpath links to Weir Lane footpath and Navigation Road are still to be surfaced and will be one of the last operations, to prevent the construction plant from damaging the tarmac.

Work is also continuing around the Bridge. The west bank is being strengthened with boulders to protect the Bridge foundations by preventing land slips and river erosion. This work has been ongoing since last month and was temporarily halted due to the discovery of a nesting Kingfisher pair. Now that an Ecologist has confirmed that the fledglings have left the nest, the bank works have resumed. Drainage is also being installed on both banks to drain surface water away from the decks and ramps via soakaways.

Finally, boundary fencing to the west bank and landscaping works will complete the project.





The first 24.5m long deck section being craned into position by the 500 tonne crane



The second 11m long deck section



The cruiser 'Edward Elgar' passing beneath the bridge



The third 11m long deck section



The 24m long ramp negotiating the London Road/Bath Road junction to reach Diglis and the east bank



The fourth and final 19.5m long deck section completing the 66m river span



Connect2 Worcester



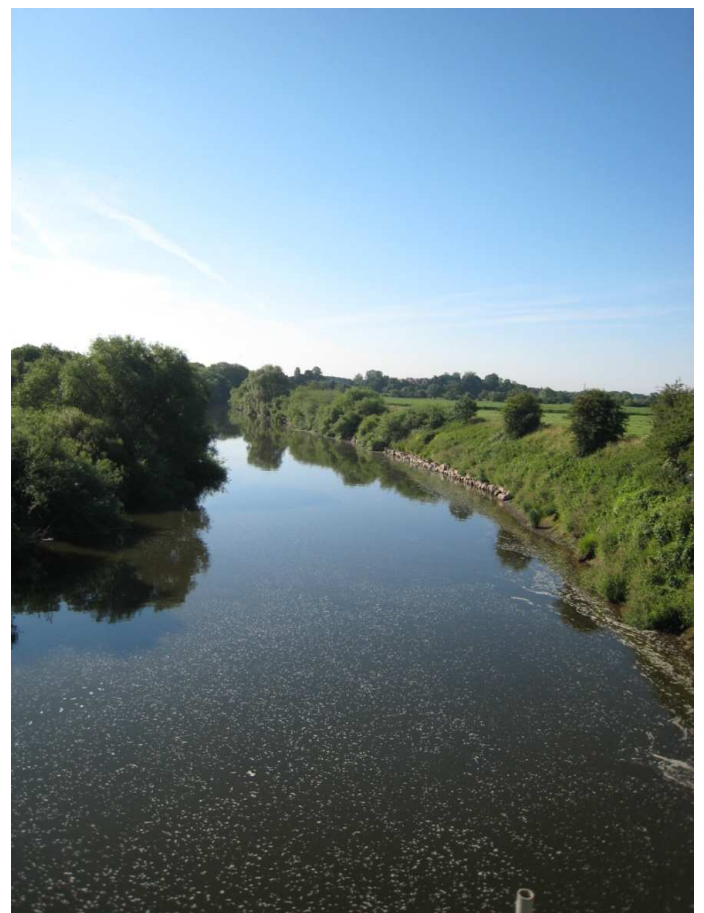
The view on the Bridge from the east bank



It fits! A tense moment is over for the Project Team.



View from the Bridge (North)



View from the Bridge (South)

