

Requests for Involvement:

School/Parent/EPS/LST/Health Professionals/Social Services:

ISSS 'requests for involvement' proformas are available from Team Managers. Requests should be co-ordinated by school SENCos wherever possible. (Medical Referral Team requests must come evidenced from a medical consultant).

Contact Information:

Operational Manager: 01905 728931

AAC: Alternative & Augmentative Communication: 01905 728923

F/HE: Further and Higher Education: 01905 8930

HI: Hearing Impairment: 01905 765849

MR: Medical Referrals: 01905 765847

MSI: Multi-Sensory Impairments: 01905 64611

SCD: Severe Communication Difficulties/Autism: 01905 765830

VI: Visual Impairments: 01905 765837

ASK FOR THE PRINCIPAL TEACHER

Service Mission Statement:

To provide educational support for any Worcestershire resident with a low incidence disability from the point of diagnosis, throughout their educational life.

Contact Address:

**Children's Services
Integrated Services-Specialist Support
Perry Wood, County Hall, Spetchley Road,
Worcester, WR5 2NP**

Tel: 01905 765849 Fax: 01905 768290



worcestershire
countycouncil



Integrated Services Specialist Support

**Hearing
Impairment
HI**

ISSS

**INFORMATION
FOR SCHOOLS**

Who we are:

Teachers with an additional specialist qualification for teaching children with a hearing impairment.

Education Audiologist.

Sign Language Skills Advisors and Deaf Role Models.

Specially trained Teaching Assistants.

What we do:

We provide a comprehensive support and teaching service to babies and children with a hearing impairment, families, carers, schools and other agencies.

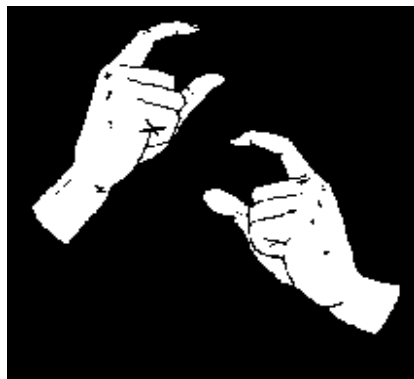
When we become involved:

We become involved as soon as a child with a suspected hearing impairment is referred to the service.

Request for Involvement:

We have an open request for policy.

- We accept requests from parents, schools and other agencies
- All requests for involvement must be accompanied with parental permission.



Support may include the following:

- A diagnostic Educational Audiology Service from 0-16 years.
- On-going audiological assessment and advice.
- Support for families and carers in a range of settings, including the home.
- Collaborative working with families, professionals and other agencies.
- Specialist educational assessment and advice.
- Advice on language and communication development.
- Support and teaching in Early Years settings, mainstream and special schools.
- Development of independent learning skills.
- Contribution to Statutory Assessment, Annual Reviews, IEP's and individual programmes of work.
- Advice on special arrangements for internal and external examinations and assessments.
- Provision of deaf awareness and in-service training.
- Provision of radio hearing aids for hearing aid users where appropriate, with on-going management, information and maintenance.
- Advice and training on the use of classroom and portable 'Sound Field Systems', cochlear implants and bone anchored hearing aids.
- Provision of training and staff development programmes for Teaching Assistants.

